

**WIRELESS DATABASE VIEWER PLUS FOR POCKET PC PHONE:
USER GUIDE**

PRODUCT VERSION: 1.5

CONTENTS

1	INTRODUCTION	4
2	INSTALLATION	5
2.1	DESKTOP INSTALLATION.....	5
2.2	POCKET PC PHONE INSTALLATION:	9
2.2.1	Manual Installation.....	9
2.2.2	Wireless Installation	10
3	USING THE WIRELESS DATABASE VIEWER PLUS ON THE DESKTOP	11
3.1	PROFILE MANAGER.....	11
3.1.1	Selection of File base and DSN base database.....	12
3.1.2	File Based Database	13
3.1.3	DSN based Database	16
3.1.4	Applying Filters	17
3.1.5	Apply Sort.....	19
3.1.6	Apply Column Sequence:	20
3.1.7	Selection of Stored Procedure.....	20
3.1.8	Select Primary key(Unique Key).....	23
3.2	PREFERENCES	26
4	USING THE WIRELESS DATABASE VIEWER PLUS ON THE POCKET PC PHONE	29
4.1	PROFILE LIST ON POCKET PC PHONE.....	29
4.2	MENU ON PROFILE LIST	30
4.3	VIEWS AVAILABLE ON POCKET PC PHONE	30
4.3.1	Multiple Record View and Single Record View	31
4.4	SEARCH CONTENTS.....	32
4.5	PREFERENCES	33
5	FREQUENTLY ASKED QUESTIONS.....	36
5.1	DESKTOP.....	36
5.1.1	I have Excel file which do not have unique key, Will this software transfer my Excel file to Pocket PC Phone?	36
5.1.2	Does software send complete database every time?	36
5.1.3	Is my database secured?	36
5.1.4	What is evaluation period of this software?.....	36
5.1.5	Does this software needs primary key in desktop side database?.....	36
5.1.6	How can I synchronize data automatically?	37
5.1.7	What time I can set for automatic synchronization?.....	37
5.1.8	Whenever I add/edit/delete record on Pocket PC Phone, in Record view I get Red/Cyan color.	37
6	SUPPORTED DATA TYPES	38

7	SYSTEM REQUIREMENT	39
8	CONTACT US	40

LIST OF FIGURES

Figure 1: Installation Start	5
Figure 2: Select Edition	6
Figure 3: Pocket PC Phone IMEI	7
Figure 4: Installation Path.....	8
Figure 5: Finish Setup.....	9
Figure 6: Profile Manger	11
Figure 7: Database Selection	12
Figure 8: File Based Database Selection	13
Figure 9: Excel Selection.....	14
Figure 10: DSN Database Selection	16
Figure 11: Table selection	17
Figure 12: Apply Filter	18
Figure 13: Apply Sort	19
Figure 14: Arrange Columns	20
Figure 15: Select DSN of Stored Procedure	21
Figure 16: Selection of Stored Procedure	22
Figure 17: Enter Parameter Values for Stored Procedure.....	23
Figure 18: Primary key Selection for Excel.....	25
Figure 19: Preferences available on Desktop side DBViewer Plus	26
Figure 20: Synchronization Settings.....	27
Figure 21: Registration of Wireless Database Viewer Plus	28
Figure 22: Database List on Pocket PC Phone	29
Figure 23: Menu on Profile List	30
Figure 24: Multiple Record and Single Record View	31
Figure 25: Menu available on Multiple Record and Single Record View	31
Figure 26: Search Data	33
Figure 27: Preferences	34

1 INTRODUCTION

Being away from your office does not mean not having the access to your data. Consider the scenario when you want to carry a copy of the database on your Pocket PC Phone, update the data and send updated data from Pocket PC Phone to original database on PC. Now it is possible with the Wireless Database Viewer Plus. Wireless Database Viewer Plus for Pocket PC Phone allows you to be more productive by allowing you to view and update the database contents on your Pocket PC Phone. Wireless Database Viewer Plus for Pocket PC Phone allows to sync with Microsoft Access, FilePro, Microsoft Excel, and any ODBC Compliant database like Oracle, SQL Server, etc. The software package consists of two software: the Pocket PC Phone DBViewer Plus Desktop (Server) that runs on Microsoft Windows, and Pocket PC Phone DBViewer Plus (Client) that run on the Pocket PC Phone. You will use the Desktop side software to create the database profiles (make the list of database) for Pocket PC Phone and data will be synchronized after using “Sync” menu available in WDBViewerPlus software on Pocket PC Phone. After Synchronization, Wireless DBViewer Plus on Pocket PC Phone will receive these profiles and data respectively, and you can view the contents of the database.

Features

- Synchronize data **Wirelessly** with Pocket PC Phone.
- View and update data on Pocket PC Phone which will reflect to Server database.
- Synchronize only updated desktop data to Pocket PC Phone automatically.
- Apply SQL Select queries, Filters, Sort the fields and Push data according to it.
- Supported Databases: MS Access, MS Excel, FilePro ,Oracle, SQL Server, FoxPro, dBase and any **ODBC Compliant Database**.
- Make a phone call for the selected field's numeric contents, which will be treated as a phone number.
- Find and Find again option to search a record.
- Easy navigation in both Record and Grid view using shortcut keys.
- Data is secured as 128 bit AES used for encryption.
- Supports Unicode language database such as Japanese, Chinese, Korean, and Russian etc.

2 INSTALLATION

This software needs to install two components. Install one component on your windows base Personal Computer (Desktop Installation) and another component on Pocket PC Phone.

2.1 Desktop Installation

Download [PPCWirelessDatabaseViewerPlus.exe](#) setup file on your PC.

Please make sure that Internet is available on the PC.

Run this **PPCWirelessDatabaseViewerPlus.exe** Setup file, this will show following screen.

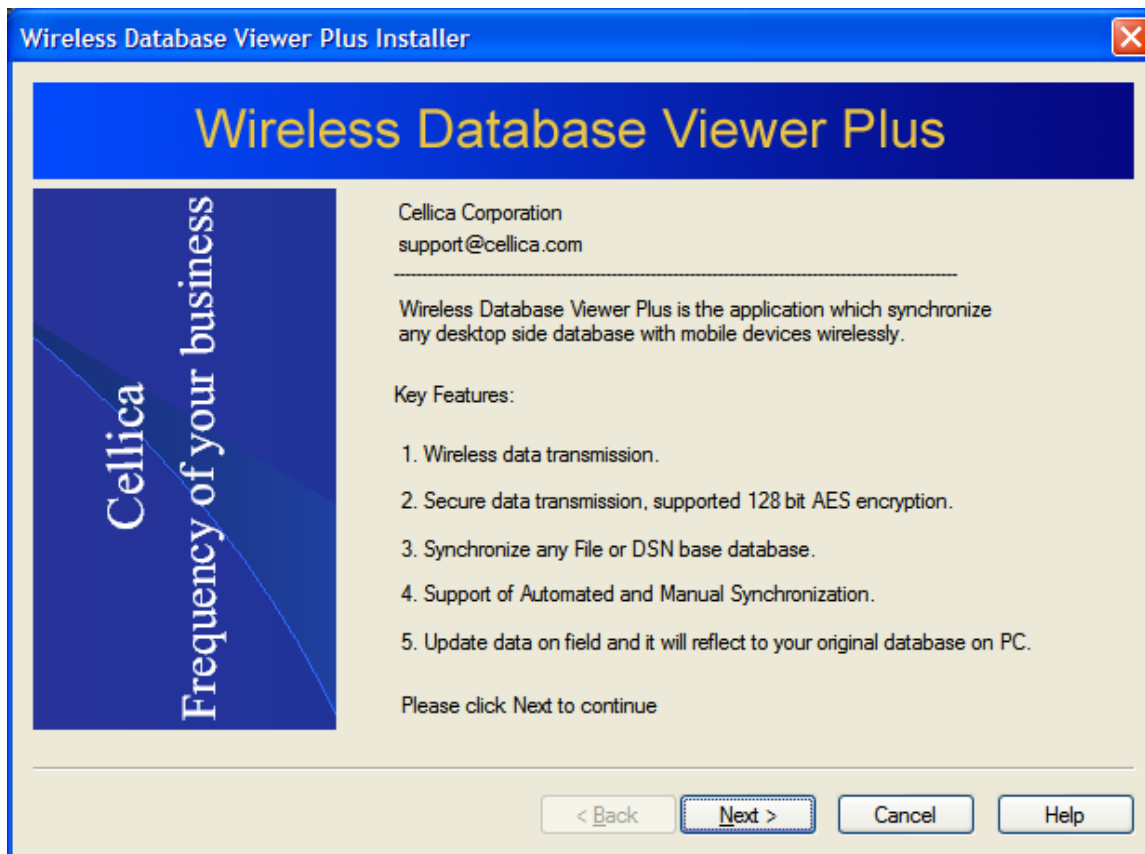


Figure 1: Installation Start

Select Personal Edition to install software for individual user. For corporate edition Please contact us at sales@cellica.com

Now “Personal Edition” is default option. This is for individual user, who wants to synchronize data with single Pocket PC Phone. Corporate edition is available for users who want to synchronize data for more than

one mobile device. Corporate version allows to synchronize single desktop side database with number of BlackBerry, iPhone, Pocket PC Phone. For corporate edition, please contact us at sales@cellica.com

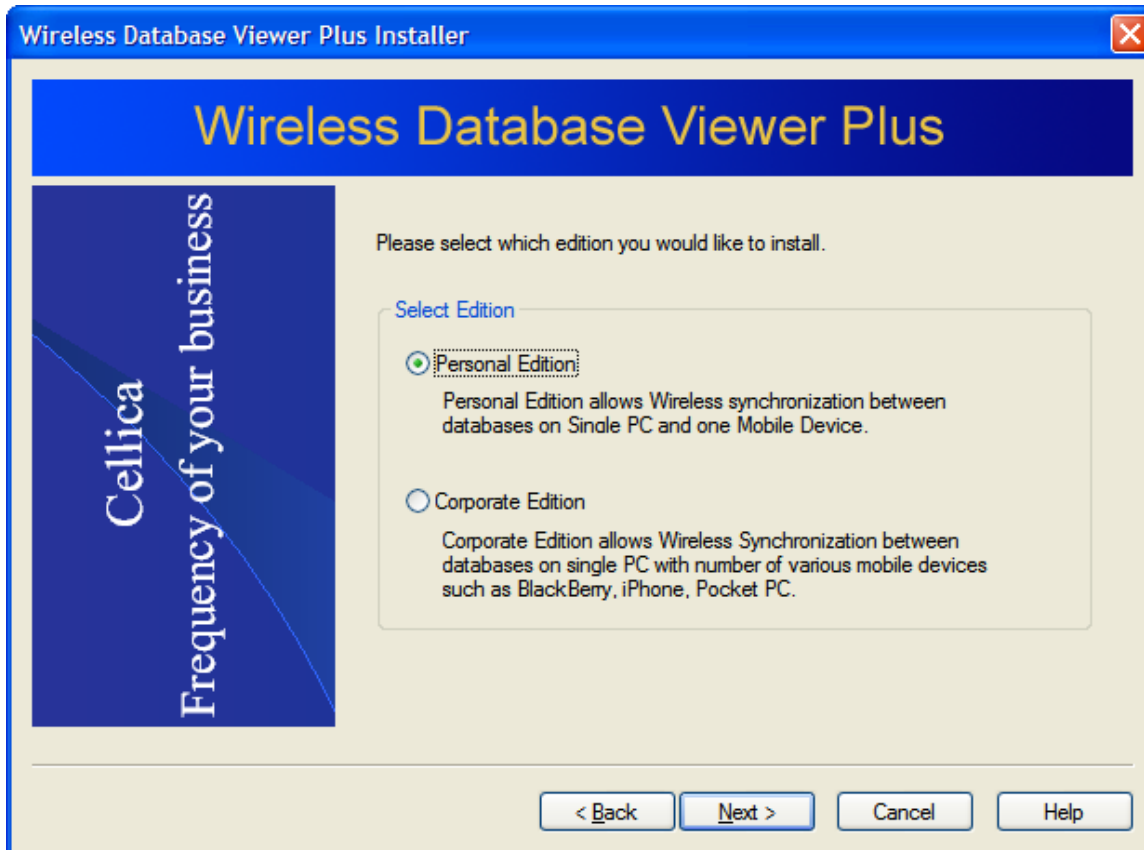
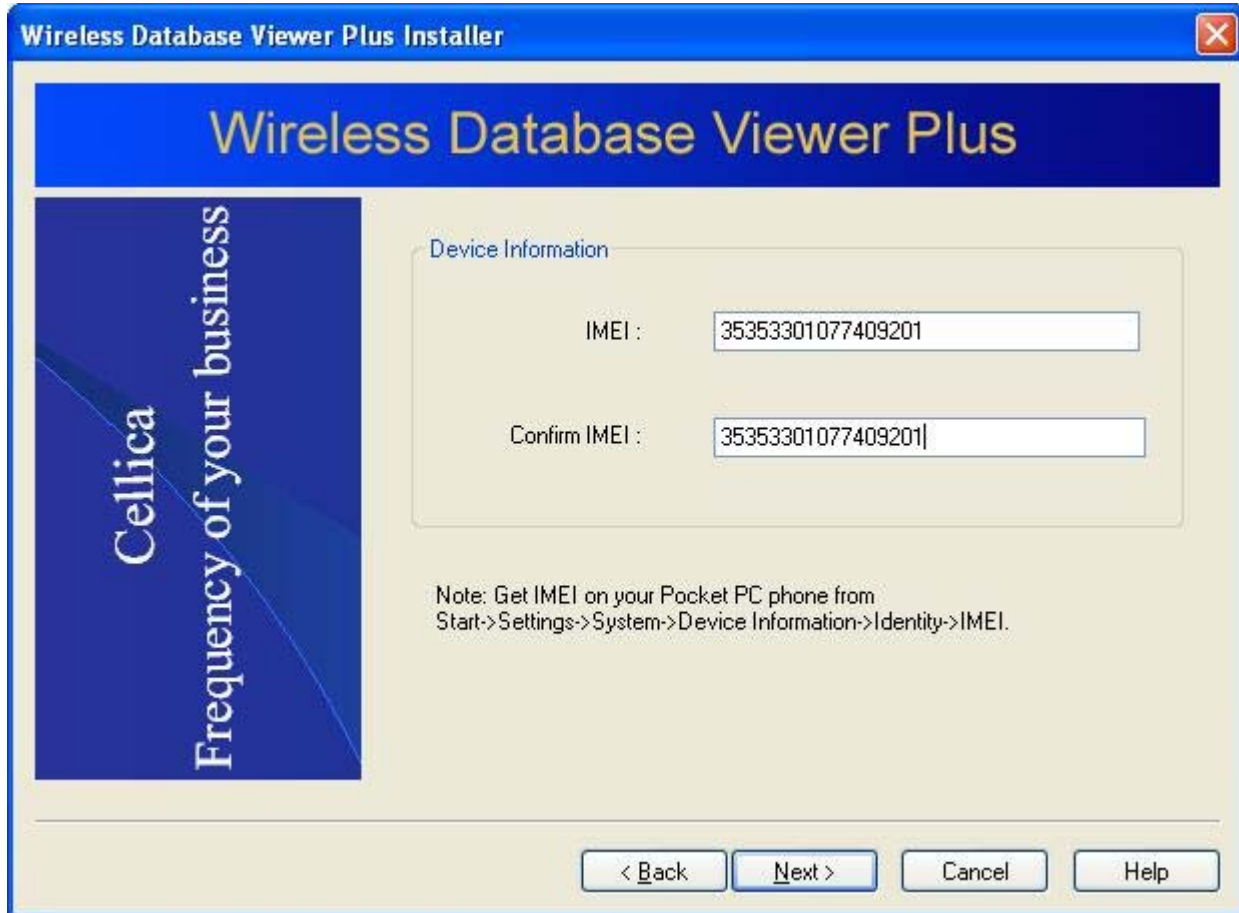


Figure 2: Select Edition

After selection of Personal Edition, Enter IMEI of your Pocket PC Phone in Device **ID** and **Confirm Device ID** field. You can get IMEI on your Pocket PC phone from Start->Settings->System->Device Information->Identity->IMEI.



Wireless Database Viewer Plus Installer

Wireless Database Viewer Plus

Device Information

IMEI :

Confirm IMEI :

Note: Get IMEI on your Pocket PC phone from
Start->Settings->System->Device Information->Identity->IMEI.

< Back Next > Cancel Help

Figure 3: Pocket PC Phone IMEI

Once you enter above information, in next installation step, select the installation path for this software on your Personal Computer.

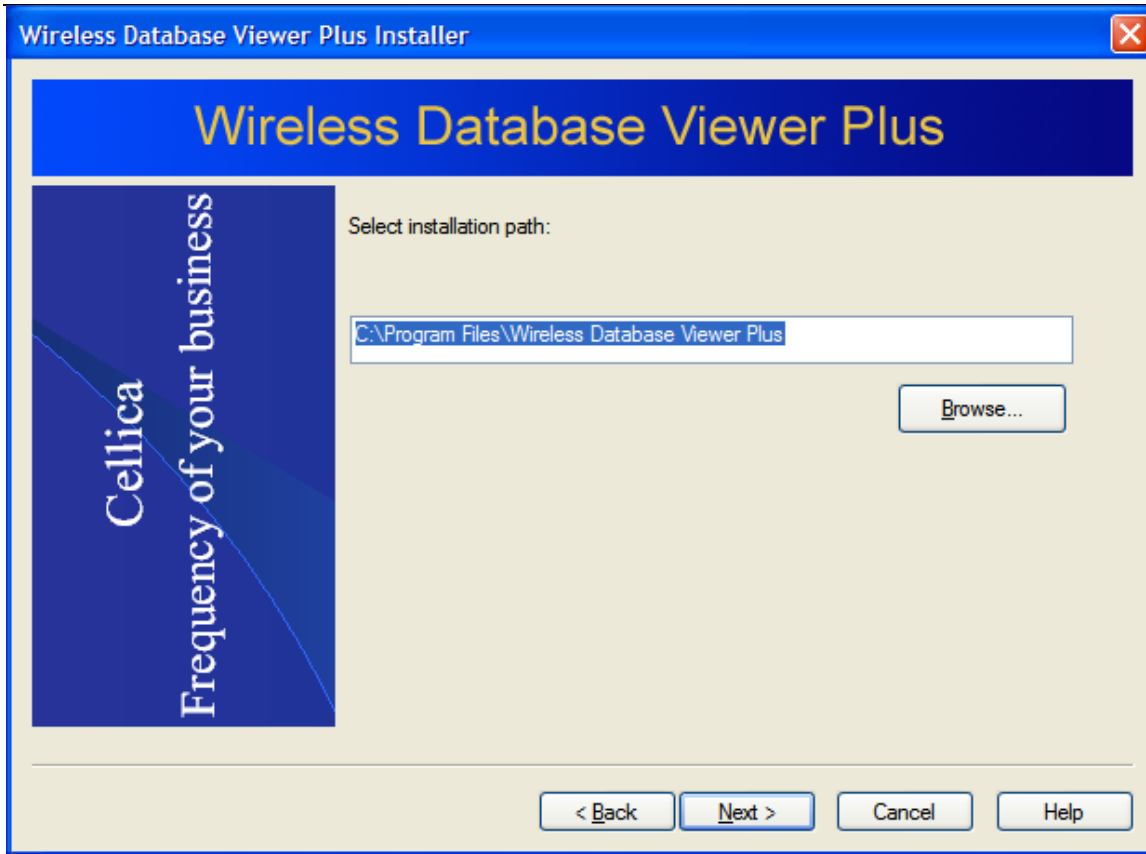


Figure 4: Installation Path

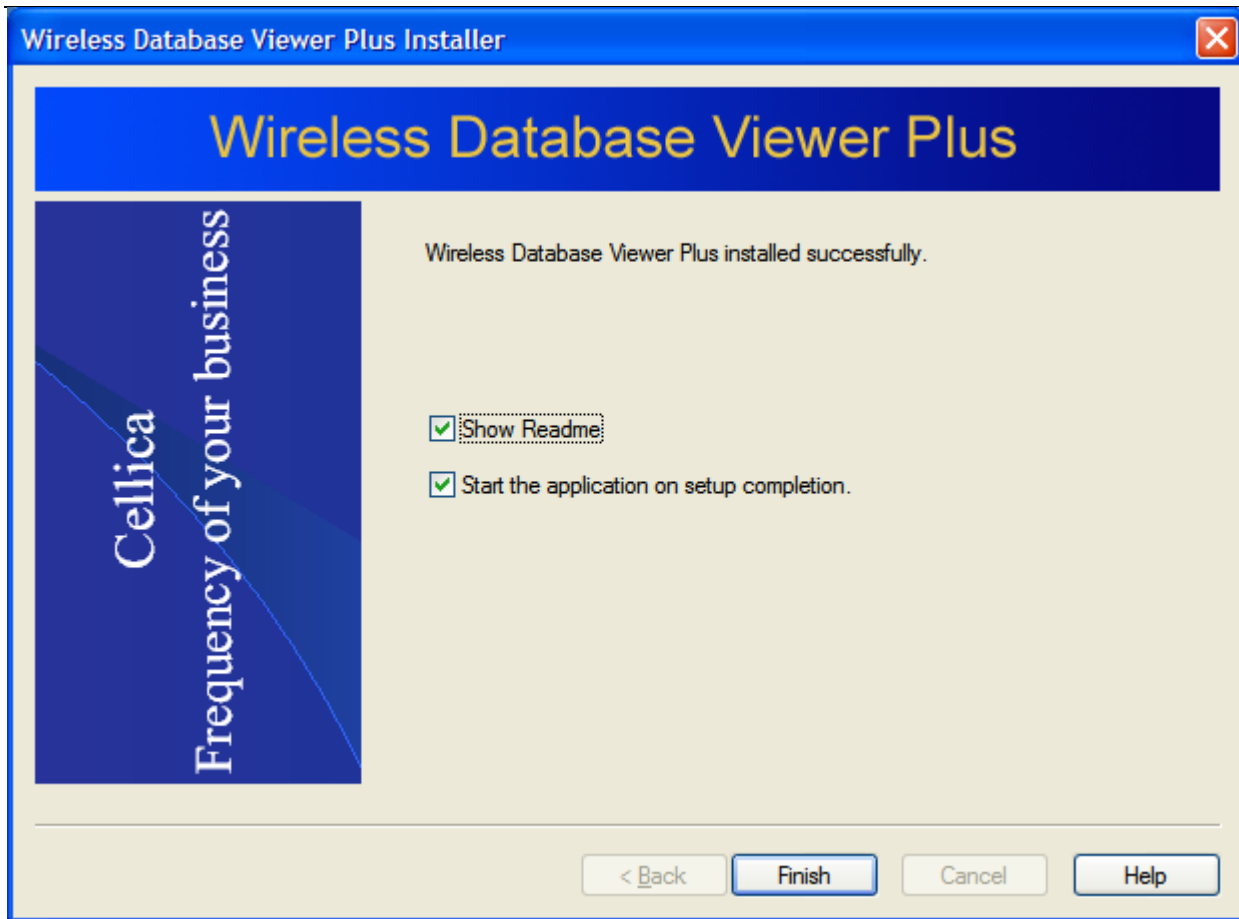


Figure 5: Finish Setup

After successful installation of the software on PC, installation location path will have **Wireless Database Viewer Plus folder** contains **Desktop Files** folder. **Desktop Files** contains **WDBViewerPlus.exe** and other files required for this software. Shortcut for **WDBViewerPlus.exe** and **User Guide** is available on your desktop.

2.2 Pocket PC Phone Installation:

There are two ways to install software on your Pocket PC Phone

1. Manual Installation
2. Wireless Installation

2.2.1 Manual Installation

After installation of desktop software, Connect your Pocket PC phone to your Personal Computer and Run the Pocket PC setup on your PC from start->Programs->Wireless Database Viewer Plus-> Pocket PC Setup.

2.2.2 Wireless Installation

To install software wirelessly on Pocket PC Phone, Use the following link in the Browser of Pocket PC Phone.

<http://www.cellica.com/OTA/wdbviewerplus.cab>

This will install software on your Pocket PC Phone wirelessly.

Now you are ready to use Wireless DBViewer Plus software.

Important: Install Wireless Database Viewer Plus software on the PC on which internet is available.

3 USING THE WIRELESS DATABASE VIEWER PLUS ON THE DESKTOP

This section will explain how to use **Wireless Database Viewer Plus** software on the PC.

Run **WDBViewerPlus** from the shortcut available on the desktop, or use Start Menu: **Start->Programs->Wireless Database Viewer Plus->Wireless Database Viewer Plus.**

There are two modules available here.

1. Profile Manager
2. Preferences.

3.1 Profile Manager

Use **Profile Manager** to add profiles (list of database) for your Pocket PC Phone. Use Add Profile/Remove Profile buttons to update the profiles list.



Figure 6: Profile Manger

Use **Add Profile** button to select the database, which you want to synchronize with Pocket PC Phone. On clicking “Add Profile” button, you will get “New Profile: Database Connection” dialog.

3.1.1 Selection of File base and DSN base database.

Select the database, which you want to synchronize with Pocket PC Phone. User can select File based as well as DSN based database. Apply Filter/ Sort for selected tables.

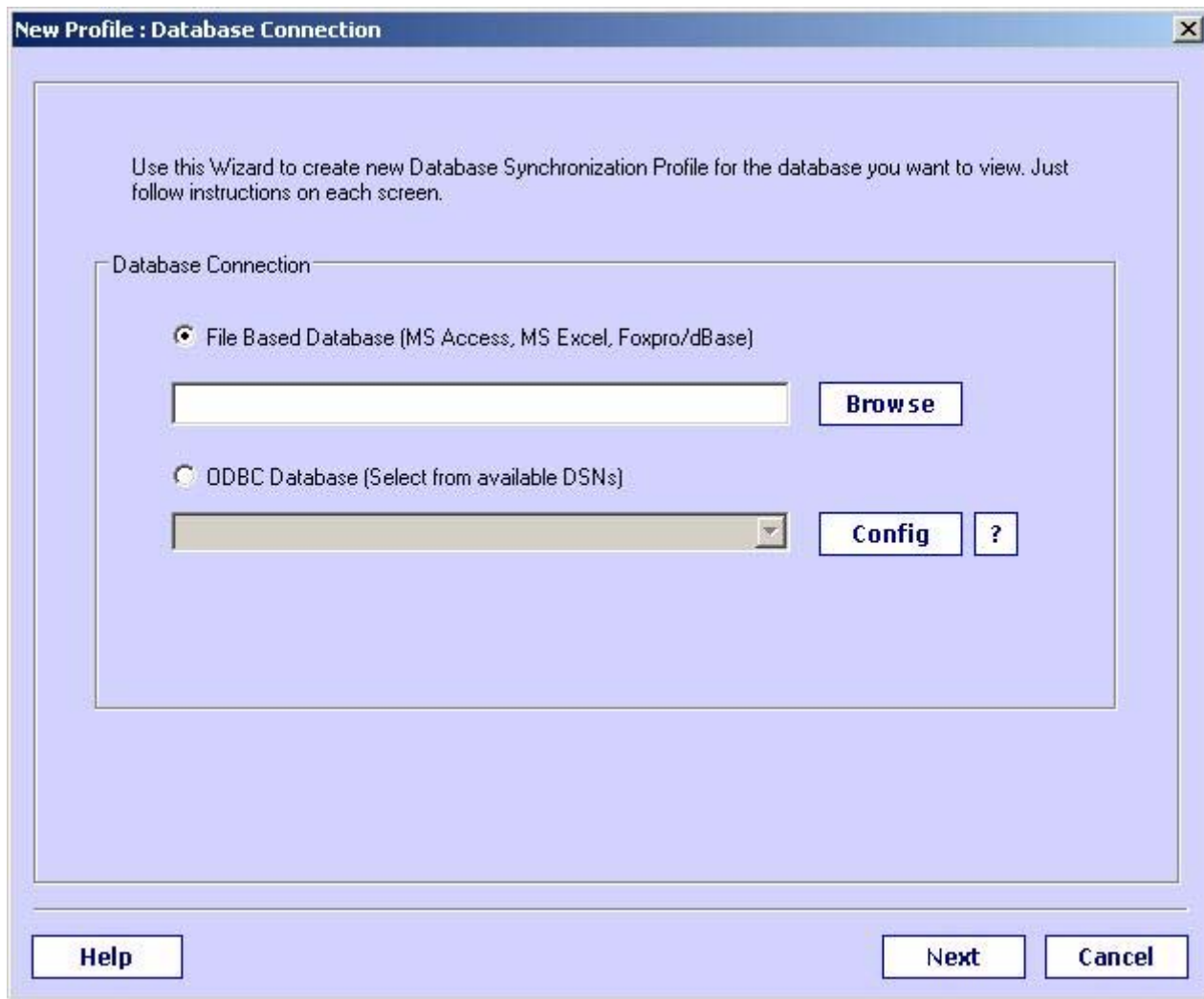


Figure 7: Database Selection

3.1.2 File Based Database

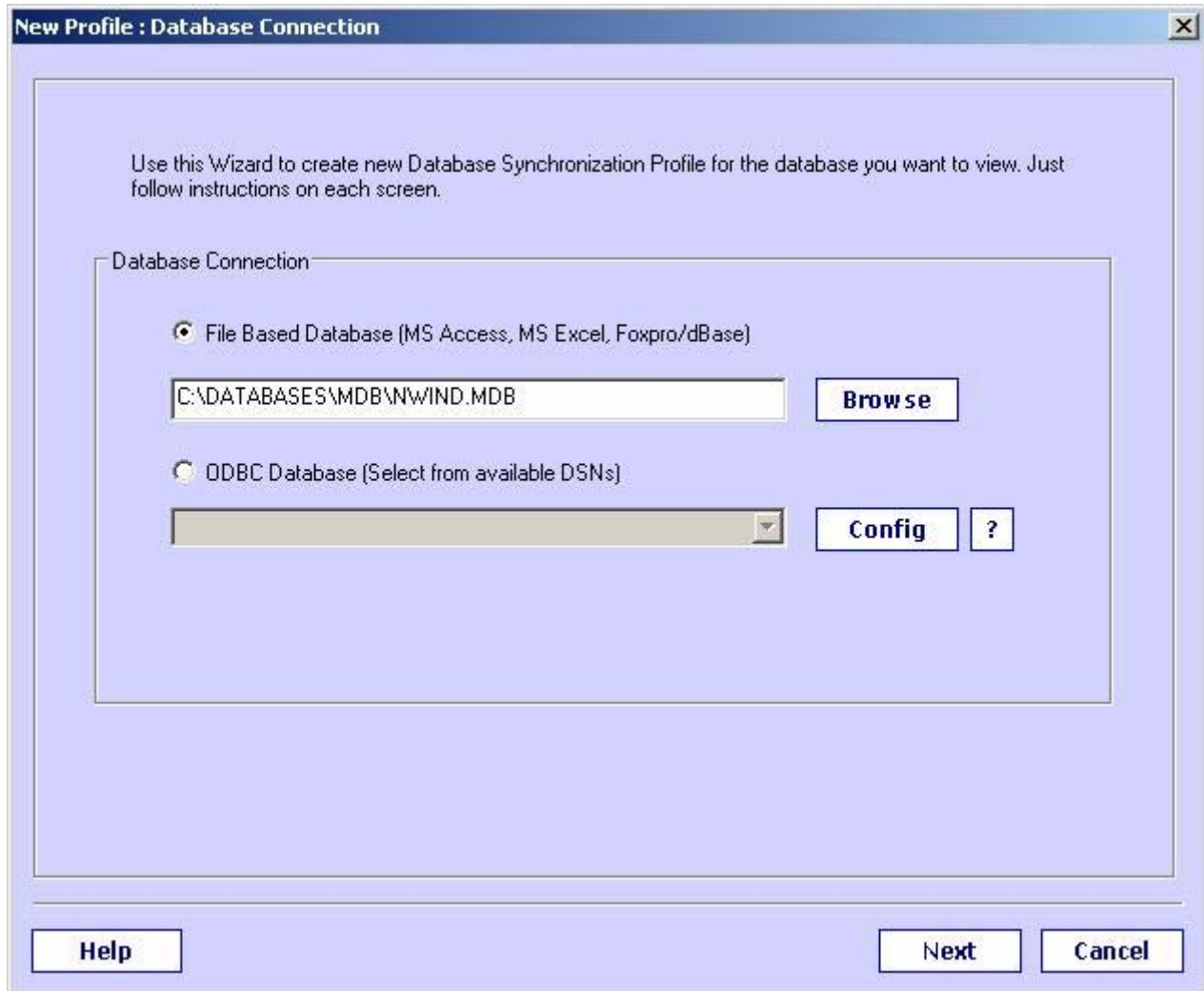
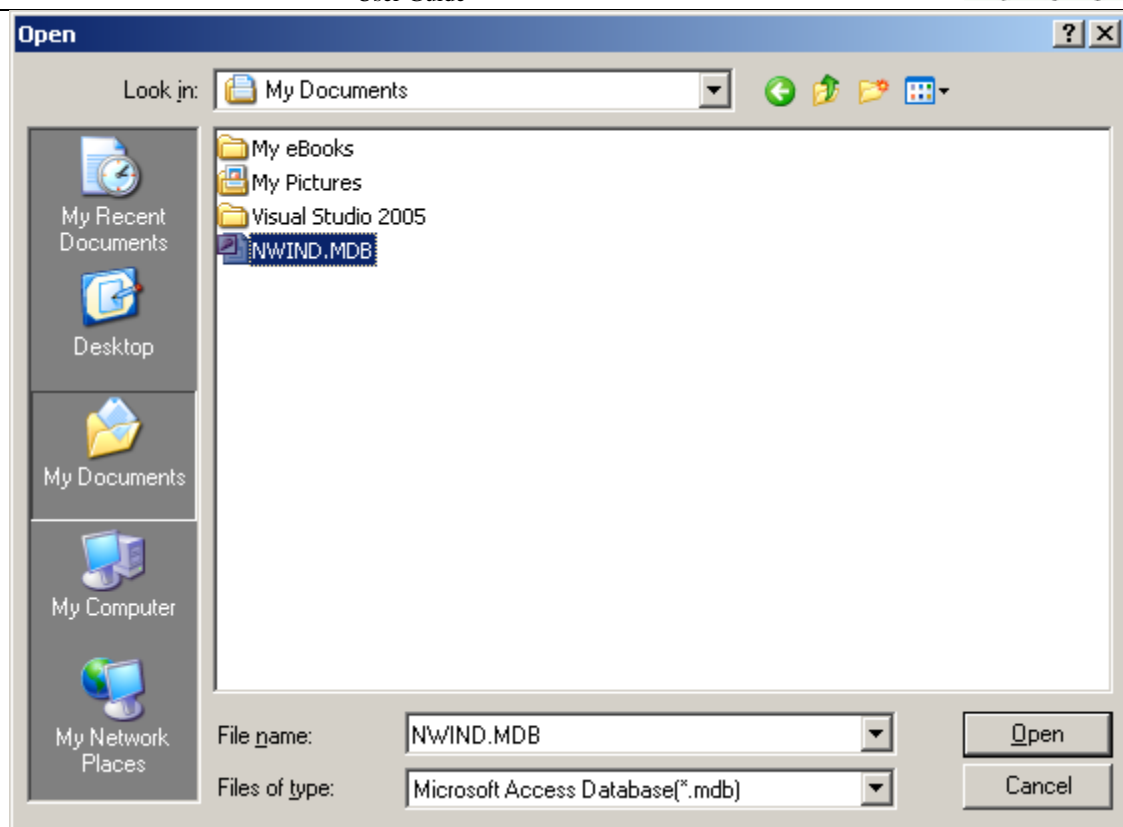


Figure 8: File Based Database Selection

Click on **Browse** button to select file of type: **MS Access, MS Excel, FoxPro, dBase**, You will get the screen as follows.



1. Select Files of type such as Microsoft Access Database (*.mdb), Excel Files (*.xls), or FoxPro/dbase Database(*.dbf) files and then select File name of your choice, for example *NWIND.mdb*, and click **Open**.
2. When you select an Excel file using Browse button, you will get a dialog prompt as:

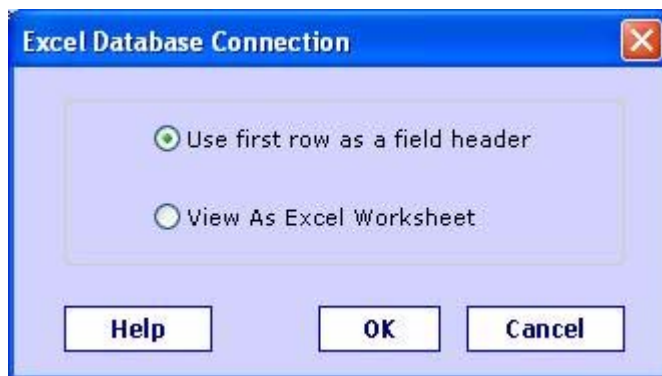
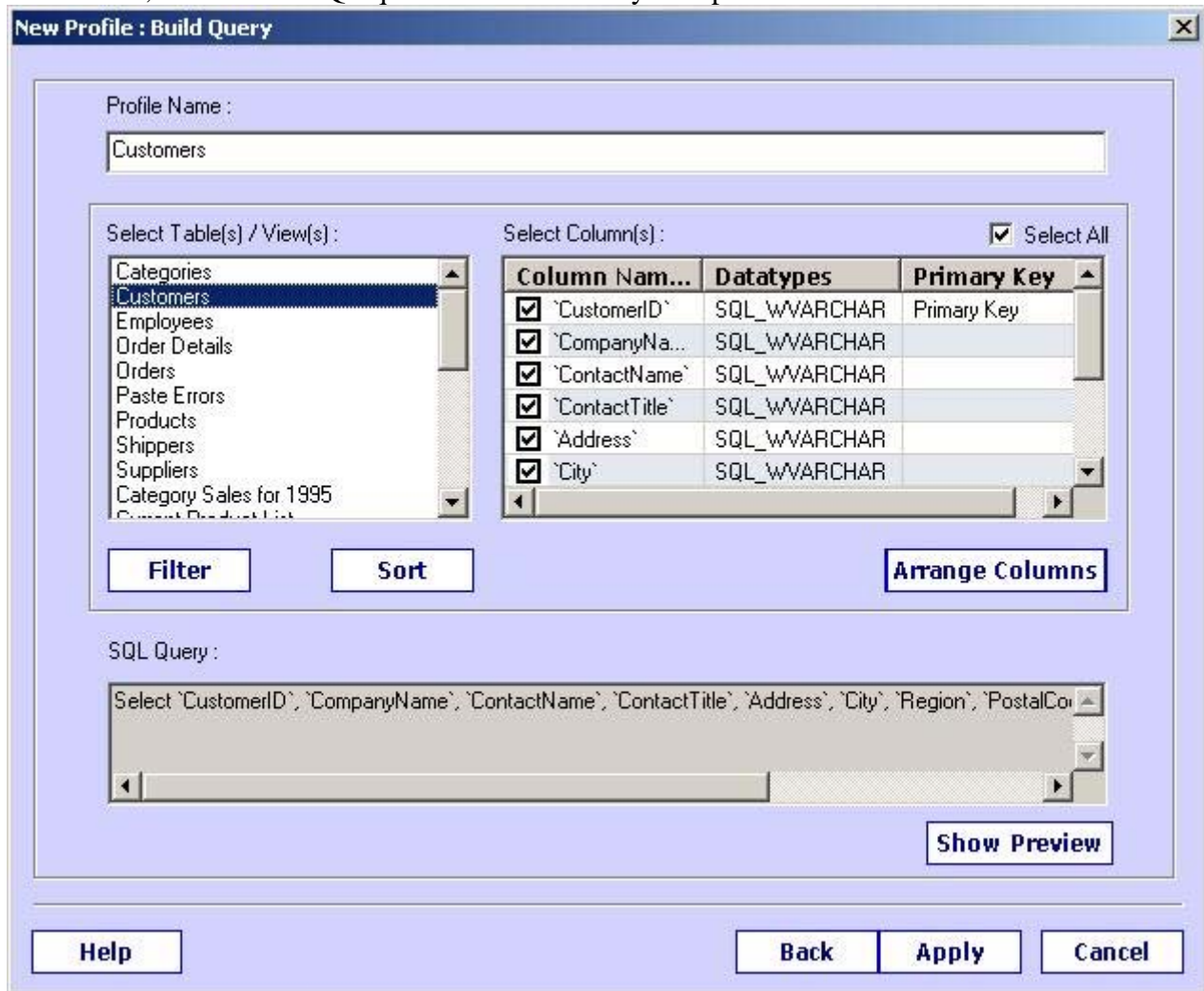


Figure 9: Excel Selection

Here, when you select "View As Excel Worksheet", contents will be shown similar to that of Excel Worksheet. Whereas, when you select "Use first row as a field header", it will be treated as a database. In this case, customized SQL queries will work on your Spreadsheet.



To manually apply filters and sort orders click on "**F**ilters" and "**S**ort" buttons.

3.1.3 DSN based Database

Click on popup provided to select database via Database Source (DSN) such as **Oracle, MySQL, SQL Server**. You will get list of available Database Source Name.

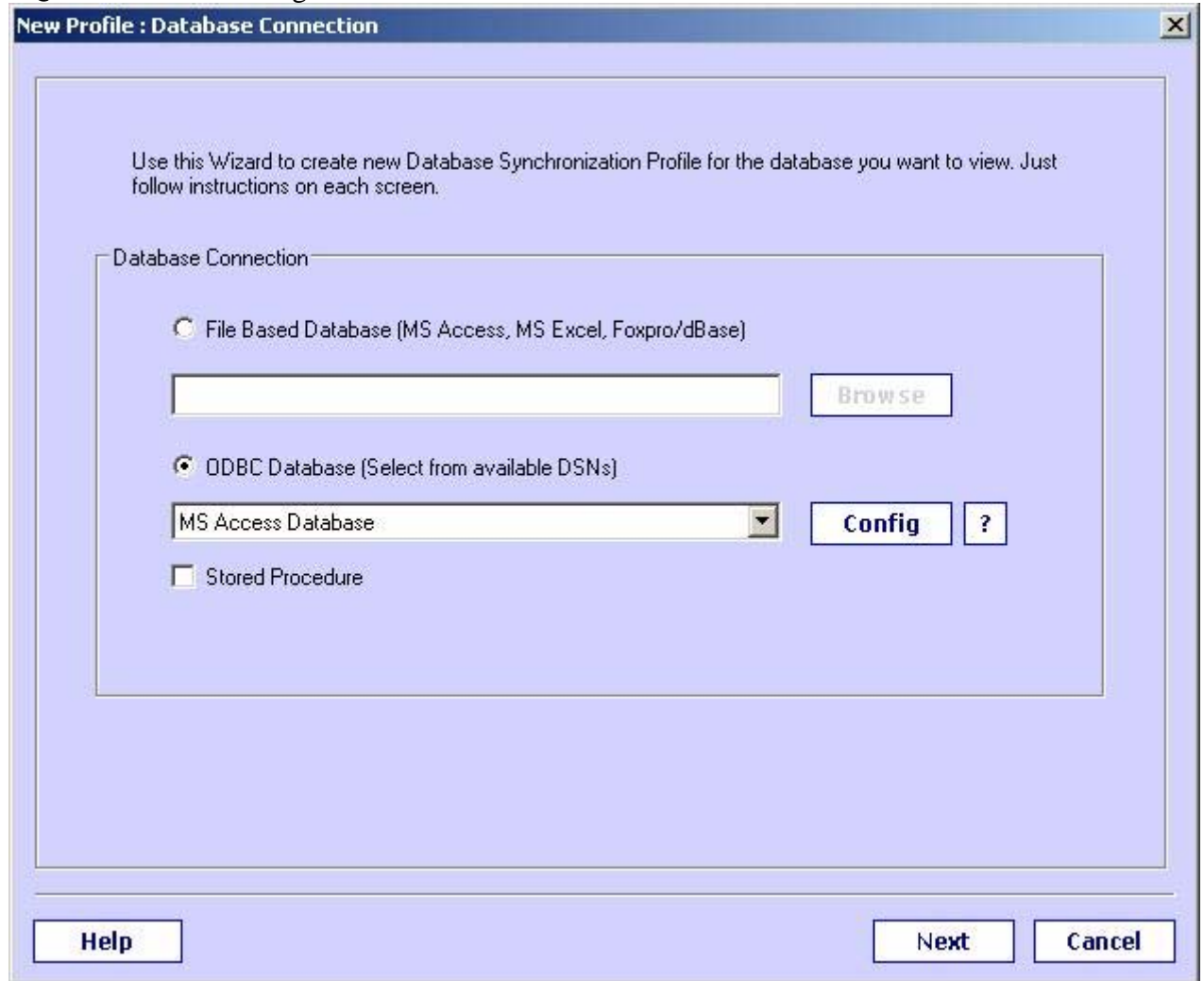


Figure 10: DSN Database Selection

You can manage DSN via ODBC Data Source Manager in Windows Control Panel.

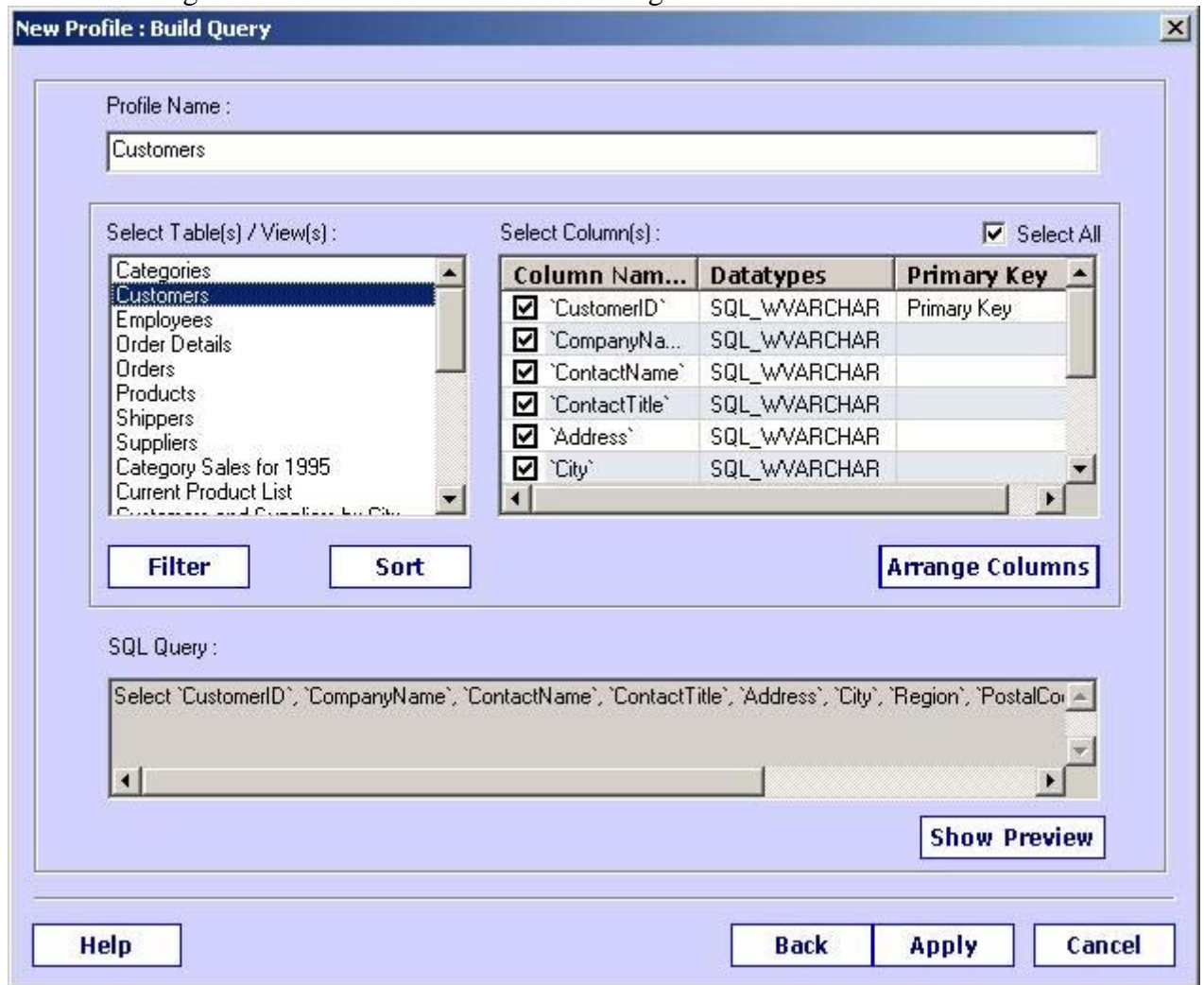


Figure 11: Table selection

3.1.4 Applying Filters

In the above dialog box, click on "**Filters**" button, you will see the following filter dialog:

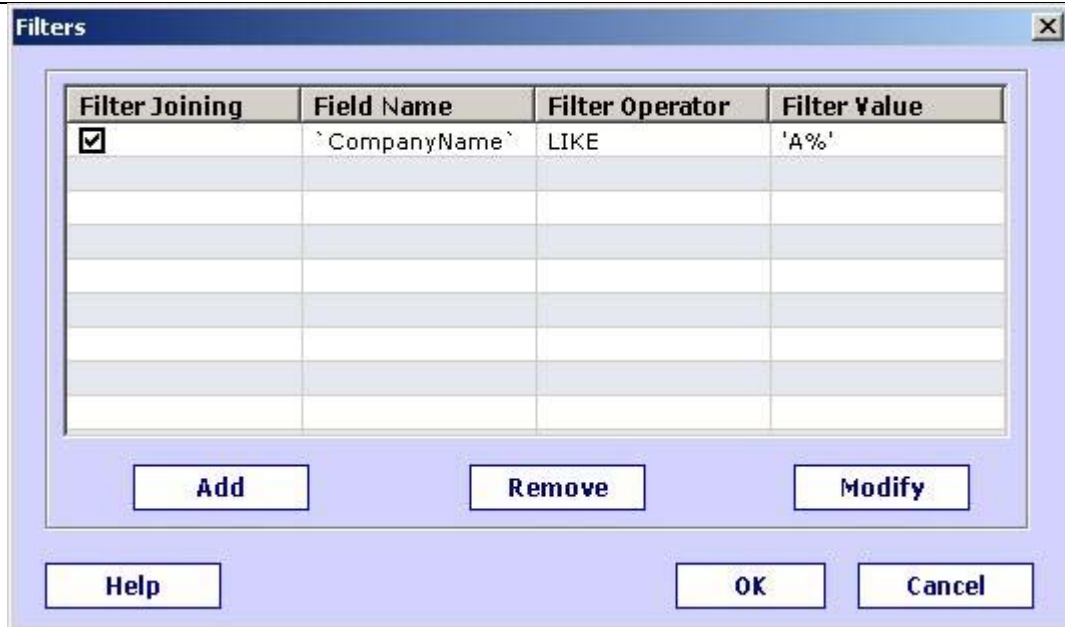


Figure 12: Apply Filter

Here, you can apply as many filters as you want. Click on "Add" button to have more filters. Select field from "Field" dropdown control, select operator from "Operator" dropdown control and click on "Value" edit box and enter value, which you want as a filter condition value.

3.1.5 Apply Sort

In “New Profile: Build Query” dialog (Fig. 11), click on the "Sort" button, you will get the following sort order Dialog.

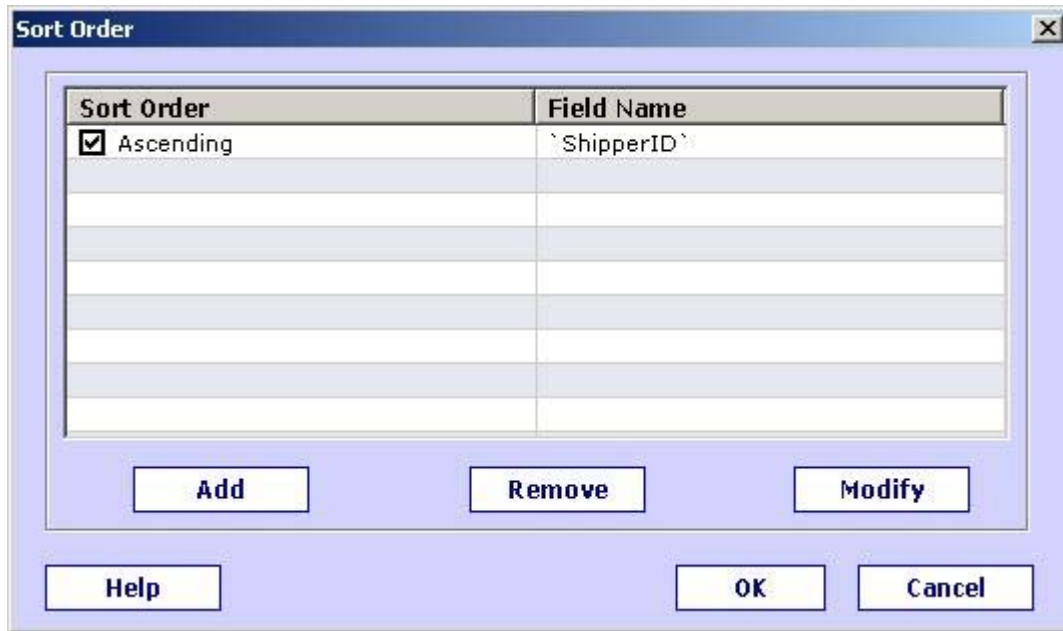


Figure 13: Apply Sort

Use “Add” button to implement Sorting on particular column.

3.1.6 Apply Column Sequence:

Here you can alter the order in which your database field on your Pocket PC Phone. Select the fields in the order in which you want those to appear on your Pocket PC Phone. Use “Clear All” button to uncheck all the selected fields. Use “Undo Select” button to undo last selection.

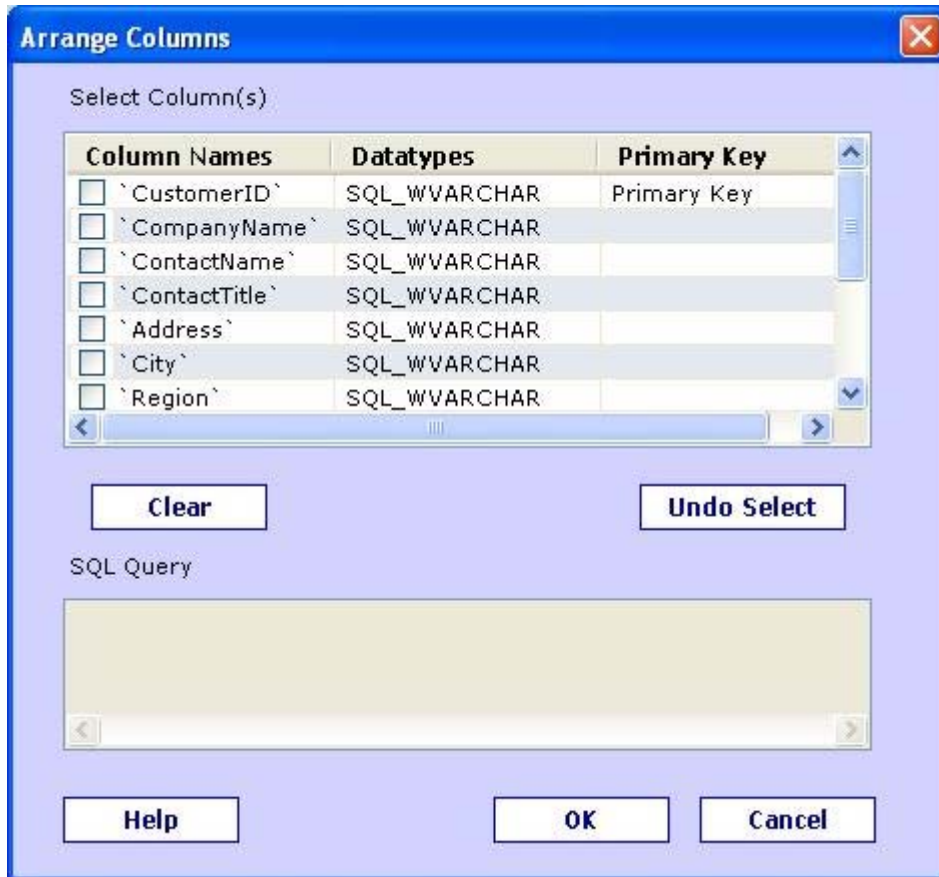


Figure 14: Arrange Columns

3.1.7 Selection of Stored Procedure

After selecting “ODBC Database” option (in fig.7), you will get “Stored Procedure” check mark option, enable this check mark and you will get list of stored Procedure in your database. Select Stored Procedure from this list.

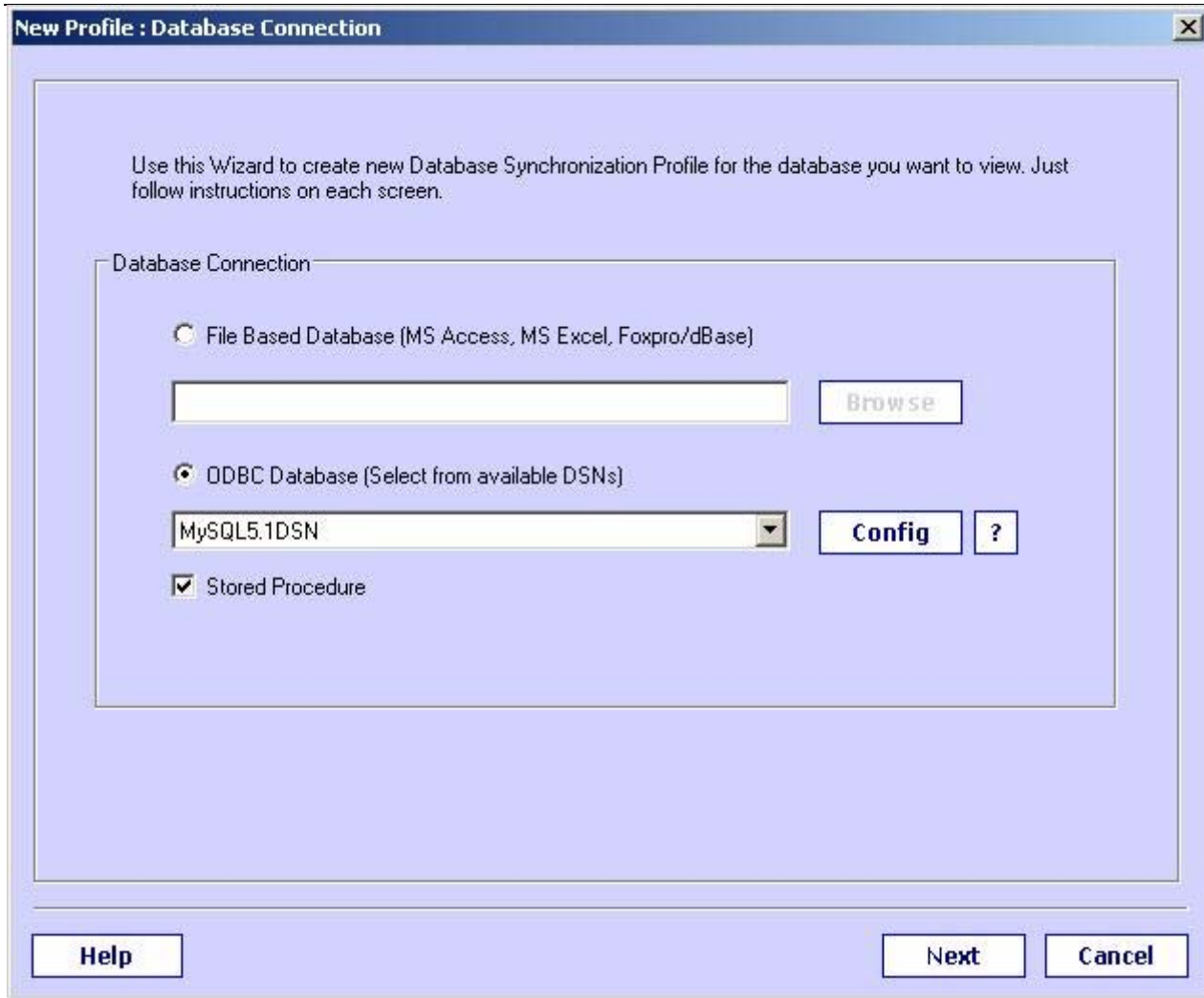


Figure 15: Select DSN of Stored Procedure

New Profile : Build Query [X]

Profile Name :

Select Procedure(s):

SelectAllEmp
SelectedEmp

Parameter(s):

Parameter N...	Datatypes	Directions
empID	SQL_INTEGER	INPUT

Select Column(s):

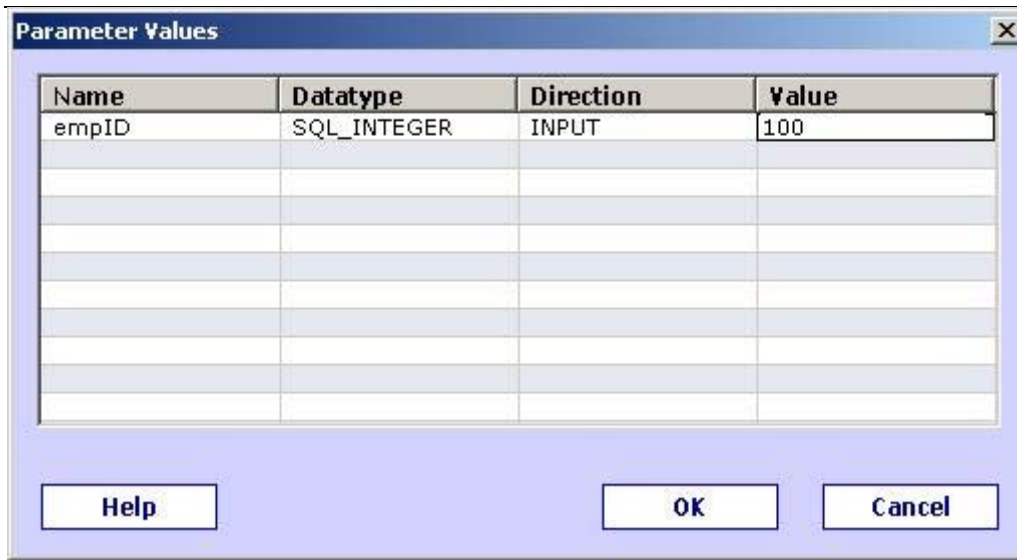
Column Names	Datatypes
EmpID	SQL_NUMERIC
EmpName	SQL_CHAR
Address	SQL_CHAR

Show Preview

Help **Back** **Apply** **Cancel**

Figure 16: Selection of Stored Procedure

If your stored Procedure will have parameter values, then Parameter values dialog will appear. Select Particular Parameter and click on Value field for that parameter. Enter specific value you want. Use OK button to finish it.



Name	Datatype	Direction	Value
empID	SQL_INTEGER	INPUT	100

Buttons: Help, OK, Cancel

Figure 17: Enter Parameter Values for Stored Procedure

3.1.8 Select Primary key(Unique Key)

After selection of database (Table/View and Stored Procedure), If your database do not have any primary key, then after selection of database, when you will finish profile creation process, software will show you “Select Primary Key Column” dialog and ask for selection of unique key, here unique key means you have to select column which will have unique data in each rows, no row in that column would have repeated data.

If you think that each column in database has repeated data and difficult to select unique key, then select the columns (more than one column) which can create unique data combination for each row and data combination of those column will not repeated in any row. This selection of unique key will not affect to your database. Here we have shown the sample images of fields selected as primary key. Also shown image of column selection for Excel file.

Select Primary Key Column ✖

Table Name : Contacts

Select Primary Key Column :

Column Names	
<input checked="" type="checkbox"/>	`FirstName`
<input checked="" type="checkbox"/>	`LastName`
<input checked="" type="checkbox"/>	`PhoneHome`
<input type="checkbox"/>	`PhoneWork`
<input type="checkbox"/>	`PhoneCell`
<input type="checkbox"/>	`ResAdrLine1`
<input type="checkbox"/>	`ResAdrLine2`
<input type="checkbox"/>	`ResCity`

Help **OK** **Cancel**

Select Unique key fields from above columns.

This Unique key column should not have repeated data in that column. Data in each record of this column should be Unique. You can select more than one columns, as a Unique key.

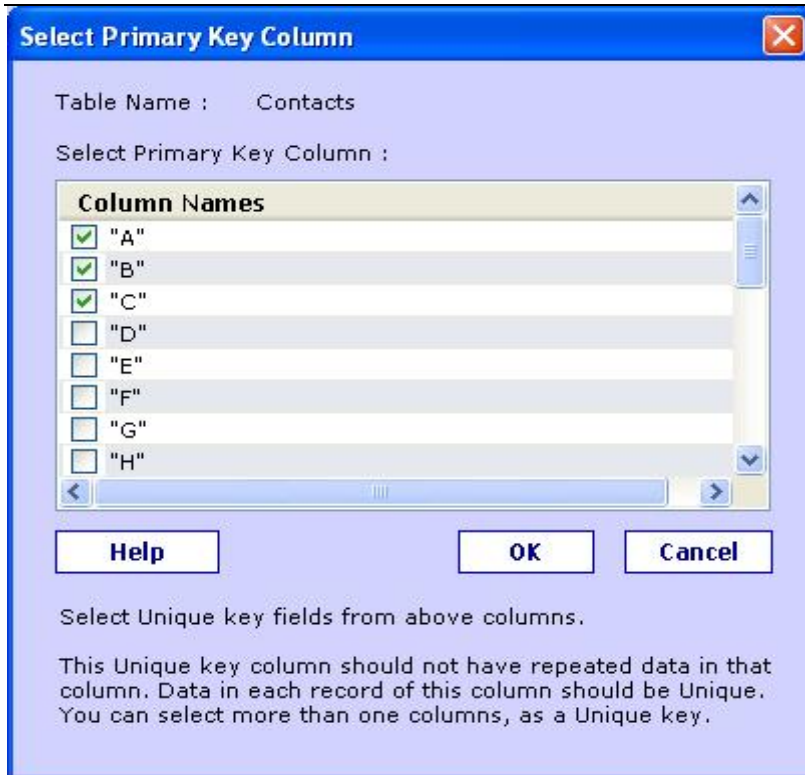


Figure 18: Primary key Selection for Excel

3.2 Preferences

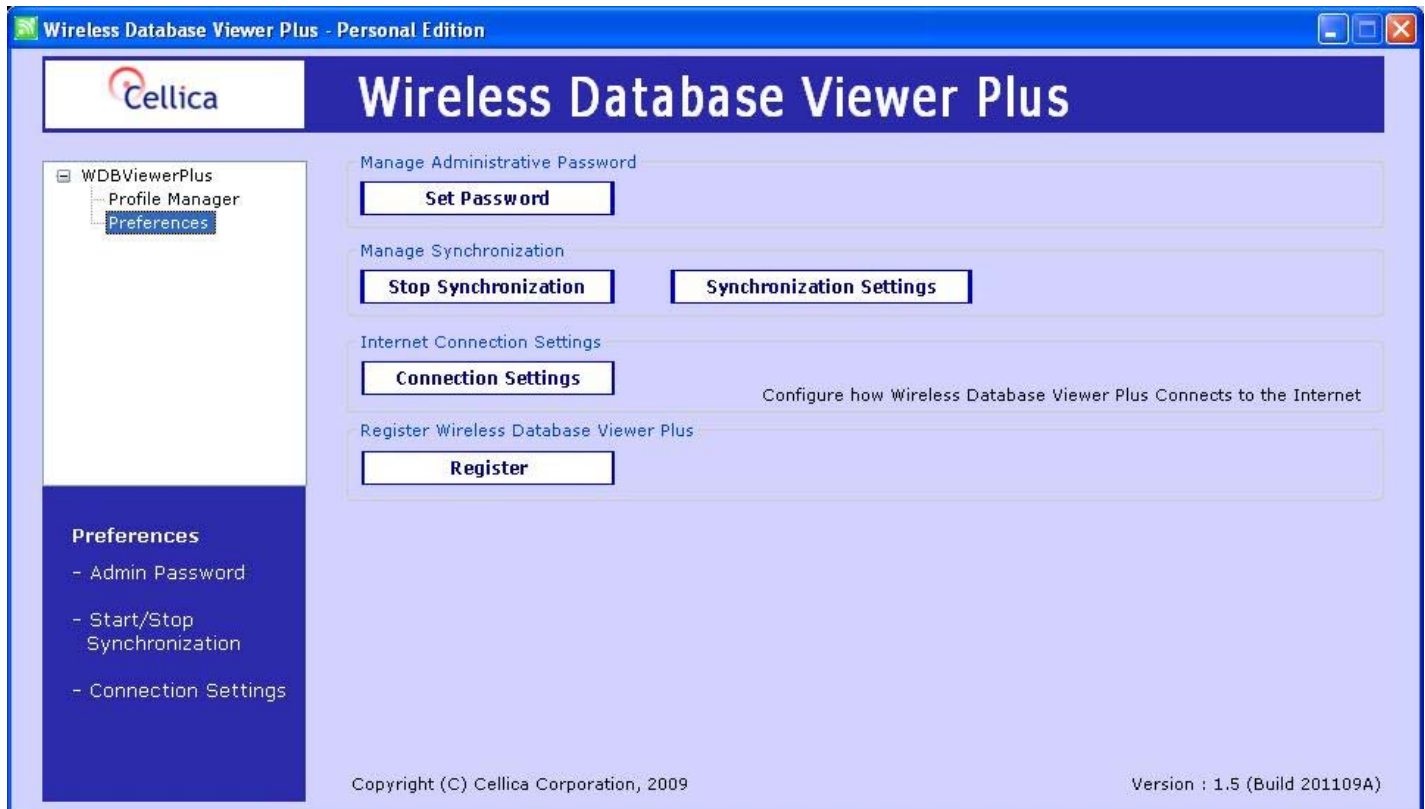


Figure 19: Preferences available on Desktop side DBViewer Plus

- **Set Password:** Protect the desktop side application by setting the password.
- **Start Synchronization/Stop Synchronization:** Use this button to start and stop the synchronizing database between Personal computer and Pocket PC Phone.

- **Synchronization Settings:**



Figure 20: Synchronization Settings

There are two options available to start Synchronization application (Background).

- **As application:** As in Windows Service Mode, it's not running in any user's context, it can't access specific user's data/resources (which are specific to user account) e.g. User DSN, Network Mapped drive, network resources etc. To avoid such type of problem related to Windows Services, use “Start As Application” option.
- **As Windows Service:** It starts without any user logged in. It does not run in any specific user's login account.

- **Connection Settings:** If your PC having Internet connection using proxy and want to change the proxy settings then use this option.
- **Register:** This option is to register Wireless Database Viewer Plus. Here you have to enter the registration code which you will get after purchasing the software. If you do not get automated registration information please send IMEI of your Pocket PC Phone to support@cellica.com. You can get IMEI of Pocket PC Phone on registration form of Wireless Database Viewer Plus.



Registration

Wireless Database Viewer Plus

Device ID : 35353301077409201

Registration Code :

Register Cancel

Note Please send us "Device ID" appeared in above Blue strip on this form to get registration key.

Figure 21: Registration of Wireless Database Viewer Plus

4.3.1 Multiple Record View and Single Record View

In Multiple Record View, Pocket PC Phone user will be able to view database contents in Column view form. This has many features.

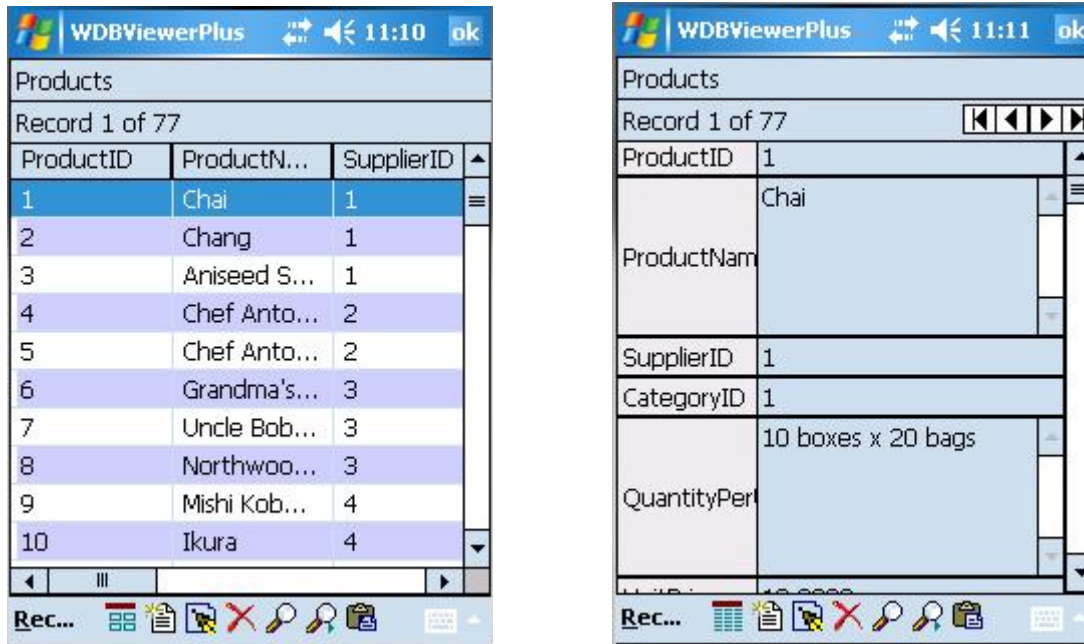


Figure 24: Multiple Record and Single Record View

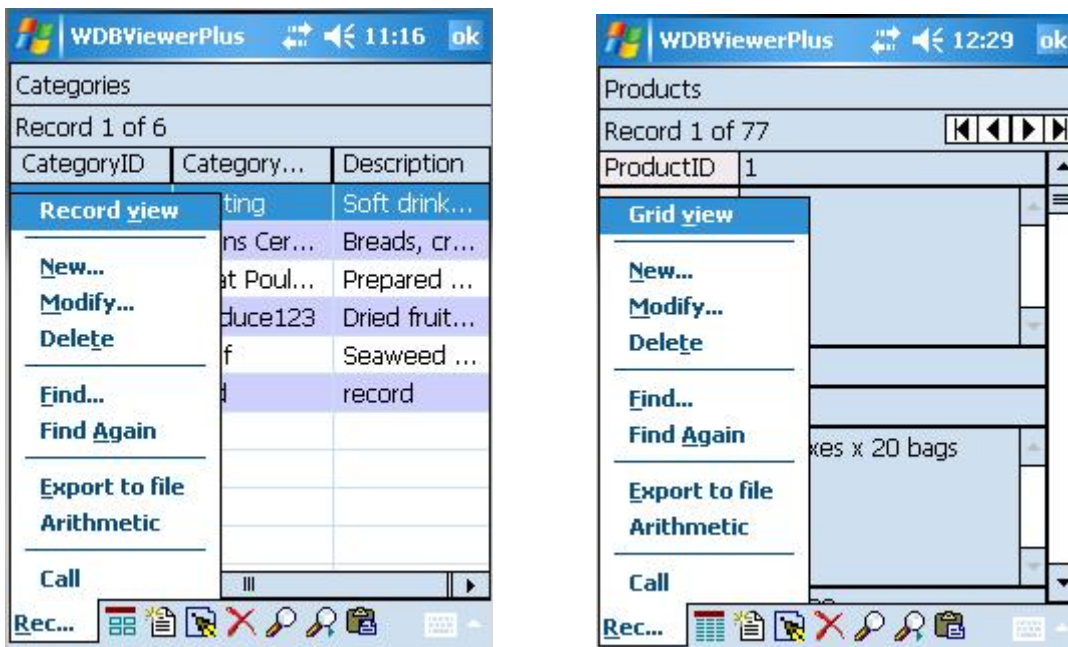


Figure 25: Menu available on Multiple Record and Single Record View

There are various useful menu options on this screen:

New	To Add new record in opened database.
Modify	To edit selected record in opened database.
Delete	To delete selected record in opened database.
Find/Find Again	Find particular data in your database. This is discussed in the next topic entitled as Search Contents.
Record View/ Grid View	Use this menu to switch between Single Record View and Multiple Record View.
Call	Make a phone call for the selected field's numeric contents, which will be treated as phone number.
Export to file	Selected record will get exported in a text file at selected path. While exporting, it will ask you, whether to include field names or not in exported record.
Arithmetic	You can get Sum/Average/Maximum/Minimum on particular column.

4.4 Search Contents

To search a particular string within the selected database, you can use "Find" and "Find Next" menu options available in both "Multiple Record View" and "Single Record view".



Figure 26: Search Data

Here while searching you need to enter a search string. You can search within all fields of a table or within a selected single field. Search can be case sensitive. "Field Begins with..." option searches specified string at the start of each field. You can search for numeric, string, date, time or any other type of field depending on its display format in record view.

4.5 Preferences

You can customize the way date and time fields are shown. Date/Time display is shown as per your "**Regional Settings**". You can change your date time view through regional settings (**Start->Settings->System->Regional Settings**).

To set application preferences, you can use "**Preferences...**" from "**Profile**" menu

Here you can set Sync Preferences as well as Application Preferences.

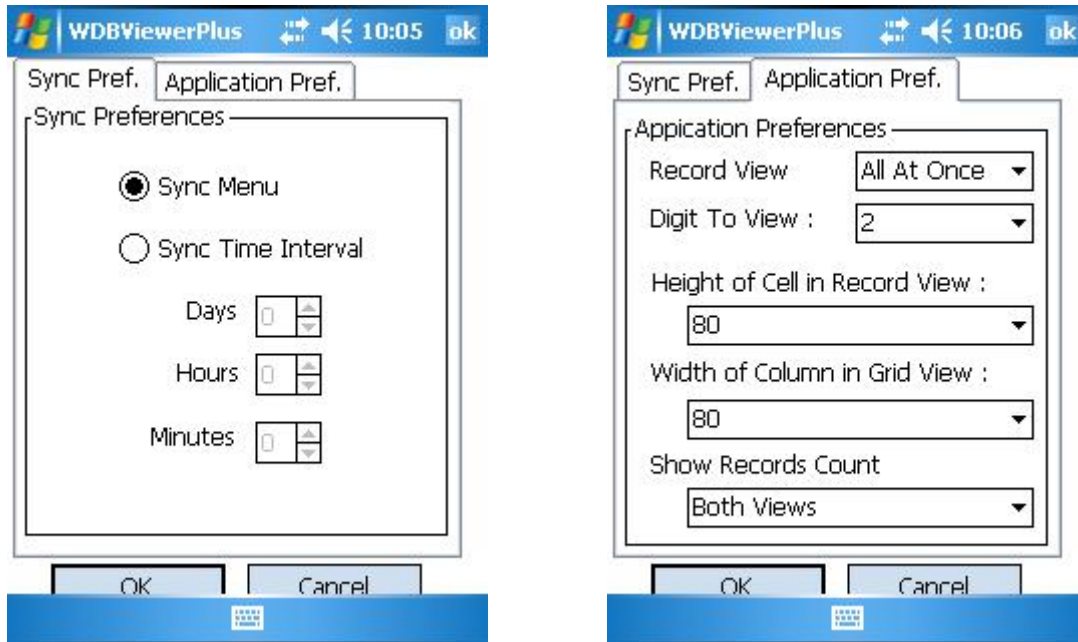


Figure 27: Preferences

In Preferences form two types of preferences are available.

1. Sync Preferences
2. Application Preferences.

1. Sync Preferences:

These preferences allows user to enable/disable manual and automatic synchronizing options. Select “Sync Menu” option to enable “Sync” menu on home screen of WDBViewer Plus software on Pocket PC. You have to use “Sync” menu to synchronize whenever you want. For better battery life, this option is better. Sync Time Interval option allows to synchronize with desktop side database automatically according to sync interval set here. “Sync” menu will not available by this option.

2. Application Preferences.

1. Digit to View

You can set the number of decimal places to be displayed in record view from application preferences. Set the number of decimal places to display for each decimal number in record view. These preferences will apply for only data type float or Single. Data type such as Numeric, having specifically specified fixed decimal point will not change due to this preference.

2. **Height of Cell in Record View**

You can set the height of Cell in Record View. This will set the height of Field type Text. Whenever you view data in Record view, Cell size will be according to this value.

3. **Width of Column in Grid View**

You can set the width of column in Grid View. This will set the width of Field type Text. Whenever you view data in grid view, column width will be according to this value.

4. **Show Records Count On:**

Allow to display Record count on Grid/Record/Both View/s.

5 FREQUENTLY ASKED QUESTIONS

Frequently Asked Questions (FAQ) are questions that our customers routinely ask us or email about. We divided FAQs in two different sections.

5.1 Desktop

5.1.1 I have Excel file which do not have unique key, Will this software transfer my Excel file to Pocket PC Phone?

Yes, software can transfer the Excel files, which do not have unique (primary) key. But for this, in Wireless Database Viewer Plus, when software ask for selection of unique key, you have to select more than one columns which will have unique data combination each row.

5.1.2 Does software send complete database every time?

No, This software only sends only changed records like new/updated/deleted records and not complete database each time.

5.1.3 Is my database secured?

Yes, Data transfer between Pocket PC Phone side DBViewer Plus and Desktop application is secured as 128 bit AES is used for encryption.

5.1.4 What is evaluation period of this software?

Software has 5 days evaluation period. In 5 days, software will work with all features and functionalities. After 5 days, Desktop side DBViewer Plus will ask for registration of software. Purchase software from [Cellica](#) to get registration code. After purchasing the software you will get registration code from Cellica, Use it in following registration form. After registration, you will able to software with all features and functionalities.

After 5 days Evaluation period, Desktop side DBViewer Plus will not synchronize with Pocket PC Phone and it will ask for registration code. Also Pocket PC Phone side DBViewer Plus, after evaluation will work with 7 records only.

5.1.5 Does this software needs primary key in desktop side database?

No, It is not compulsory that your database should have primary key. But after selecting your database, you have to select column, which will have unique data in each row. You can select more than one column so that combination of these fields can create unique data for each row. A **unique key** or **primary key** is a key to uniquely identify each row in a table. No two distinct rows in a table can have the same value (or combination of values) in those columns.

5.1.6 How can I synchronize data automatically?

To start synchronization automatically, in preferences form, Select “Sync Preferences” tab of Wireless DBViewer Plus on your Pocket PC Phone, Select “Sync Time Interval” option and interval. Sync Time Interval you can set Day, Hours, and Minutes.

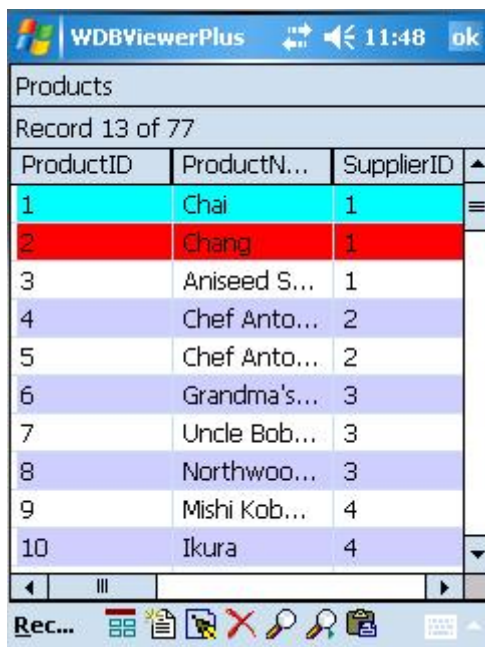
5.1.7 What time I can set for automatic synchronization?

For automatic synchronization, you can set “Sync Interval” option in Days, Hours, and Minutes.

5.1.8 Whenever I add/edit/delete record on Pocket PC Phone, in Record view I get Red/Cyan color.

Cyan color indicates that record synchronization is still in progress.

Red color indicates that Record has problem while syncing with desktop database. Status menu shows information related with record syncing process.



ProductID	ProductN...	SupplierID
1	Chai	1
2	Chang	1
3	Aniseed S...	1
4	Chef Anto...	2
5	Chef Anto...	2
6	Grandma's...	3
7	Uncle Bob...	3
8	Northwoo...	3
9	Mishi Kob...	4
10	Ikura	4

6 SUPPORTED DATA TYPES

- Currently Wireless Database Viewer for Pocket PC Phone supports following data types.
- Memo, Char, VarChar, VarChar2
- Number of type: Byte, Decimal, Integer, Long Integer, Single, Real, Float, Double
- GUID
- Date/Time
- AutoNumber of type: Long Integer
- Yes/No
- Hyperlink
- Currency

7 SYSTEM REQUIREMENT

Desktop: Windows 2000 or Windows XP with Service Pack 2, Windows 2003

Device: Pocket PC Phone

8 CONTACT US

You can use the following email addresses to contact us:

- Product support
support@cellica.com
- Sales inquiries
sales@cellica.com