

# MOBILE DATABASE VIEWER PLUS

## USER GUIDE

PRODUCT VERSION: 4.0

# CONTENTS

---

<b>1</b>	<b>INTRODUCTION .....</b>	<b>5</b>
1.1	FEATURES.....	5
<b>2</b>	<b>INSTALLATION .....</b>	<b>6</b>
2.1	DESKTOP INSTALLATION.....	6
2.2	DEVICE INSTALLATION.....	6
<b>3</b>	<b>USING THE DATABASE VIEWER PLUS ON PERSONAL COMPUTER.....</b>	<b>7</b>
3.1	ADD MOBILE DEVICE TO DBVIEWER PLUS .....	7
3.2	DBVIEWERPLUS MENU .....	8
3.2.1	<i>Creating New Profile.....</i>	9
3.2.2	<i>Profile Type Selection.....</i>	9
3.2.3	<i>Database Selection .....</i>	11
3.2.4	<i>Table Selection/Query Building .....</i>	11
3.2.5	<i>Sync Information.....</i>	14
3.2.6	<i>Modifying Existing Profile.....</i>	16
3.2.7	<i>Deleting Profile.....</i>	19
3.3	IMPORT MOBILE DBVIEWER PLUS DATA AS A .CSV.....	19
3.4	RECOVERING LOST DATA .....	20
3.4.1	<i>Taking Backup.....</i>	20
3.4.2	<i>Restoring Data.....</i>	20
<b>4</b>	<b>DATABASE VIEWER PLUS ON MOBILE.....</b>	<b>22</b>
4.1.1	<i>Open Database.....</i>	22
4.1.2	<i>View Database Contents.....</i>	22
4.1.3	<i>Edit Database Contents.....</i>	23
4.1.4	<i>Create New Database .....</i>	24
4.1.5	<i>Custom Database:.....</i>	26
4.1.6	<i>Standard Database:.....</i>	28
4.1.7	<i>Go To Record.....</i>	29
4.1.8	<i>Call.....</i>	30
4.1.9	<i>Search Text.....</i>	30
4.1.10	<i>Math on Column .....</i>	31
4.1.11	<i>Change Password.....</i>	33
4.1.12	<i>Settings.....</i>	34
4.1.13	<i>Shortcut Keys.....</i>	34
4.1.14	<i>Application Registration.....</i>	35
4.1.15	<i>Limitation after evaluation period.....</i>	36
<b>5</b>	<b>SUPPORTED DATA TYPES.....</b>	<b>37</b>
<b>6</b>	<b>SYSTEM REQUIREMENT .....</b>	<b>38</b>

7 CONTACT US .....39

## LIST OF FIGURES

---

Figure 1: Home Screen of DBViewerPlus on PC.....	7
Figure 2: Add User .....	8
Figure 3: Menu available in Desktop DBViewer Plus .....	8
Figure 4: Create New Profile .....	9
Figure 5: Sync Type Selection.....	10
Figure 6: Table Selection.....	12
Figure 7: Apply Filter .....	13
Figure 8: Apply Sort .....	14
Figure 9: Select User and database destination on mobile .....	15
Figure 10: Edit Profile .....	16
Figure 11: Rebuild Query .....	17
Figure 12: Change Sync Type .....	19
Figure 13: Import data as a .csv .....	20
Figure 14: Restore data.....	21
Figure 15: Home Screen of DBViewerPlus on mobile.....	22
Figure 16: Multiple and Single Record View .....	23
Figure 17: Add/Edit/Delete Record on mobile .....	24
Figure 18: Create new Database on mobile.....	25
Figure 19: Create Custom Database .....	28
Figure 20: Create Standard Database .....	29
Figure 21: Go To Record.....	30
Figure 22: Search Data on Mobile.....	31
Figure 23: Math On Column.....	32
Figure 24: Change password .....	33
Figure 25: Settings of Mobile side application.....	34
Figure 26: Software Registration.....	36

# 1 INTRODUCTION

---

Think of the time when you had created databases on your computer and wanted to view and update it on your Mobile phone (Series 60 3<sup>rd</sup> and 5<sup>th</sup> edition) when you are away from your computer. Mobile Database Viewer Plus will help you to view and edit the contents of your desktop databases like **MS Access, FoxPro, dBase, Excel and any ODBC Compliant Database like Oracle, SQL Server** on Mobile phone and import it to original database. You can create new database on Mobile phone.

It has two components: One works on Microsoft Windows based Computer and other on Mobile Phone. Use the Windows program to transfer your database tables to Device and Device to Desktop.

Use Device side DBViewer Plus to view and edit the database.

## 1.1 Features

- Supported Databases: MS Access, MS Excel, FileMaker Pro, Oracle, SQL Server, FoxPro, dBase and any **ODBC Compliant Database**.
- Update data on your mobile and sync (Overwrite) it to original database.
- Create new databases on device.
- View records either "all at a time" or "a single record at a time".
- Specify SQL Select queries, filters, Sort the fields and fetch data according to these specifications.
- Make a phone call for the selected field's numeric contents, which will be treated as a phone number.
- Find and Find again option to search a record.
- Easy navigation in both Record and Grid view using shortcut keys.
- Application supports some standard databases such as Credit card, Passport, and Insurance Policy etc.
- Supports Unicode language database such as Japanese, Chinese, Korean, and Russian etc.

## 2 INSTALLATION

---

### 2.1 Desktop Installation

Download [MobileDBViewerPlus.exe](#) file if you have not done so already.  
**Run this setup on the Windows based PC.**

After successful installation of the software on Personal Computer, installation location path will have **Mobile DBViewer Plus** folder, which contains **Desktop Files** such as DBViewerPlus.exe and other files required for this software and **Device Installation File**. Short cut for **DBViewerPlus .exe** and User Guide is available on your Desktop.

### 2.2 Device Installation

Use “Install Application” option available in PC Suite to install software on your Mobile. Select **DBViewerPlus.sis** file from installation path to install device side software on your Mobile.

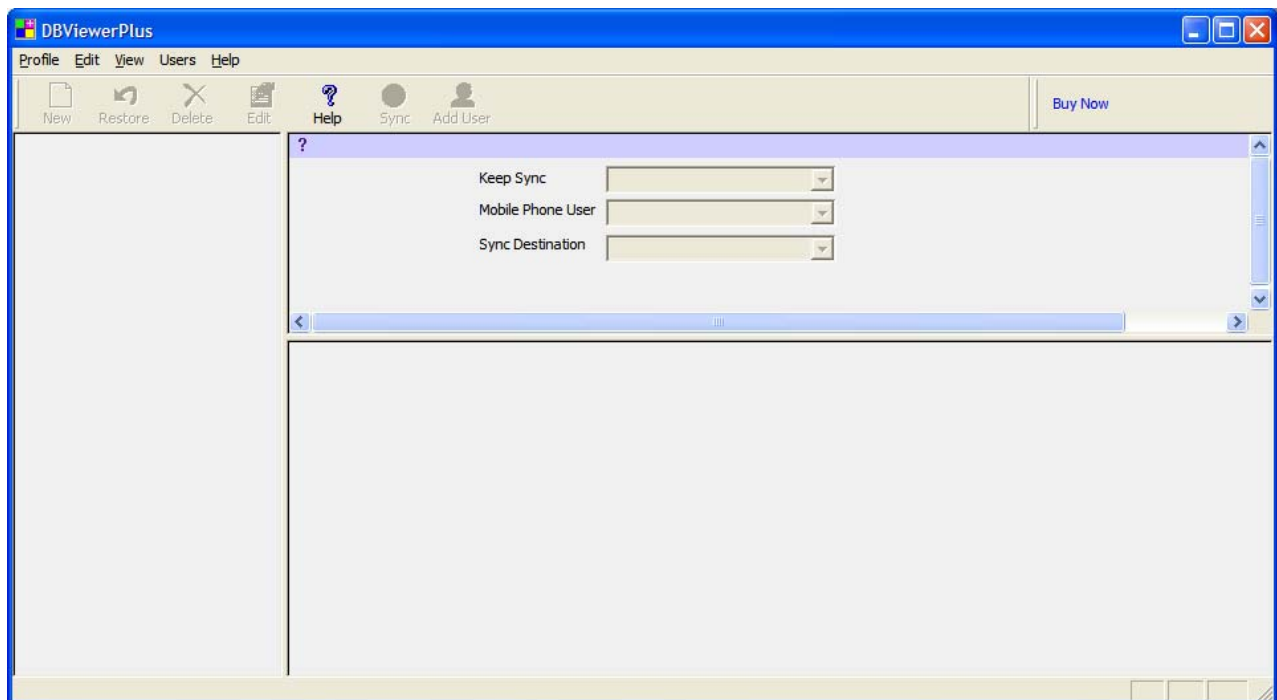
### 3 USING THE DATABASE VIEWER PLUS ON PERSONAL COMPUTER

This section will explain how to use **DBViewerPlus** software on the PC.

Run **DBViewerPlus** from the shortcut available on the desktop, or use Start Menu:

**Start->Programs-> Mobile DBViewer Plus->Mobile DBViewer Plus.**

You will see following screen.



**Figure 1: Home Screen of DBViewerPlus on PC**

#### 3.1 Add Mobile device to DBViewer Plus

Use the **Add from Users Menu** to add users and their Mobile devices. Data can be transfer to the devices added in this module. You can also remove the users from Delete from Users Menu.

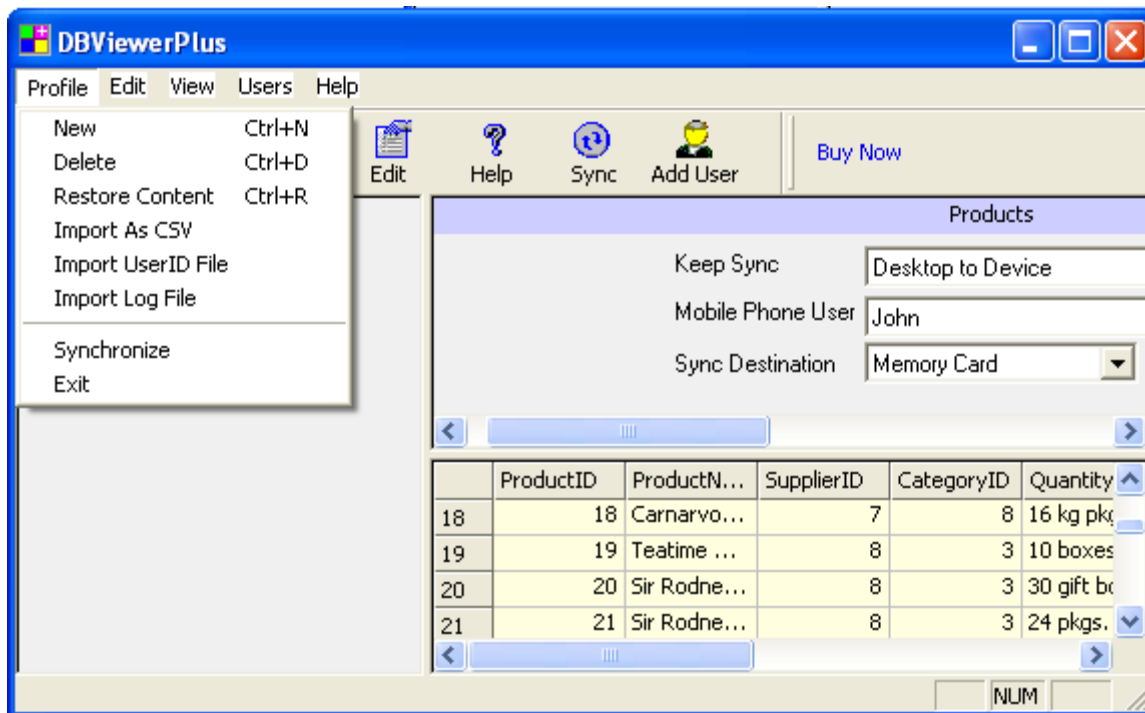
When you start Desktop side application first time, it will ask for adding your mobile device (Mobile phone user) to DBViewer Plus software. Connect your Mobile phone to PC using USB cable and use "Add User" wizard to add mobile device to DBViewer Plus. You can Add/Remove Mobile device at any time in DBViewer Plus using menu "Users->Add/Delete".



**Figure 2: Add User**

Use "Add New User" button to Add new device to User Manager.

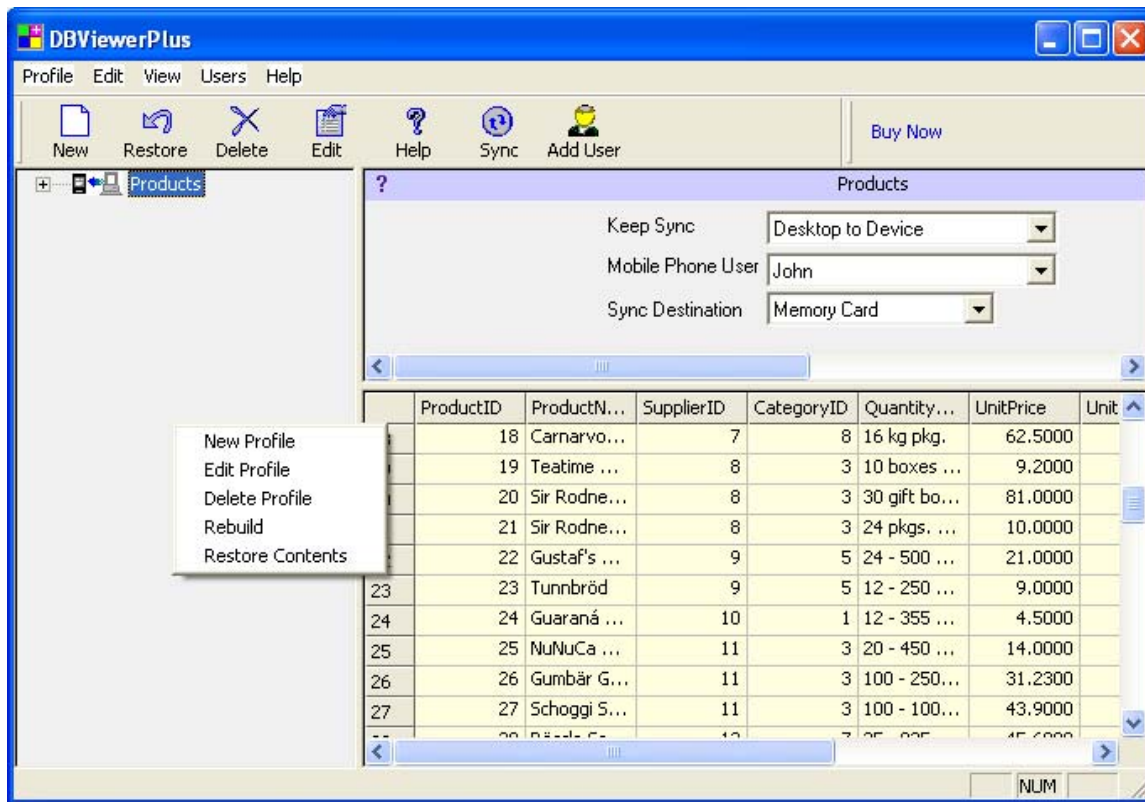
### 3.2 DBViewerPlus Menu



**Figure 3: Menu available in Desktop DBViewer Plus**

### 3.2.1 Creating New Profile

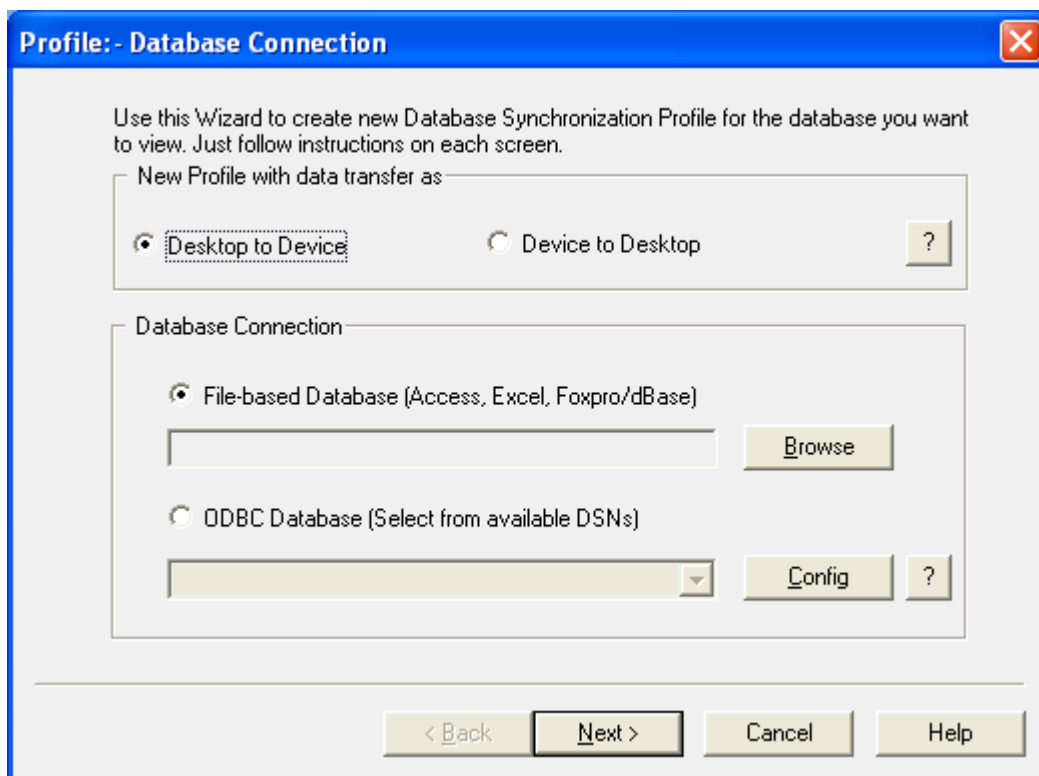
Right click in Left Pane and select "New Profile" or from Profile menu, click New.



**Figure 4: Create New Profile**

### 3.2.2 Profile Type Selection

After selecting New Profile, you will be prompted to New Profile Wizard as shown below.



**Figure 5: Sync Type Selection**

From above screen select either select "Desktop to Device" or "Device to Desktop" profile type. DBViewerPlus supports only these two types of sync profile.

- **Desktop to Device**

Select this profile type when you want to transfer your desktop database contents to Mobile device. Every time, when sync take place, this profile will overwrite device side contents from desktop, regardless device side contents.

- **Device to Desktop**

Select this profile type to transfer your device contents to desktop database. First time, desktop database contents will be transferred to device and then after, for every syncing, Device side contents will be transferred in desktop database.

If you modify table/query of this profile, then desktop database contents will be transferred on device, even though profile is set to transfer "Device To Desktop". It will overwrite Device contents.

Please select only such desktop database, which does not have any constraints/validations, defined in it, as it may create problems while transferring Device side contents.

Although, you can select such database, but you may lose some of your desktop contents depending on database constraints. Select this profile type on your own risk.

If you find that, after syncing you have not retained all database contents, use backup restore feature to restore your desktop database contents. DBViewerPlus takes backup of desktop database before transferring Device side contents into it.

### 3.2.3 Database Selection

From above figure, Fig. 5, either select "File Based Database", or "ODBC Database".

- **File Based Database**

File based database allows you to select database like MS Access (mdb), Excel file (xls), FoxPro/dbase (dbf) files. Click on browse button and browse to the location where you database file is situated and select one.

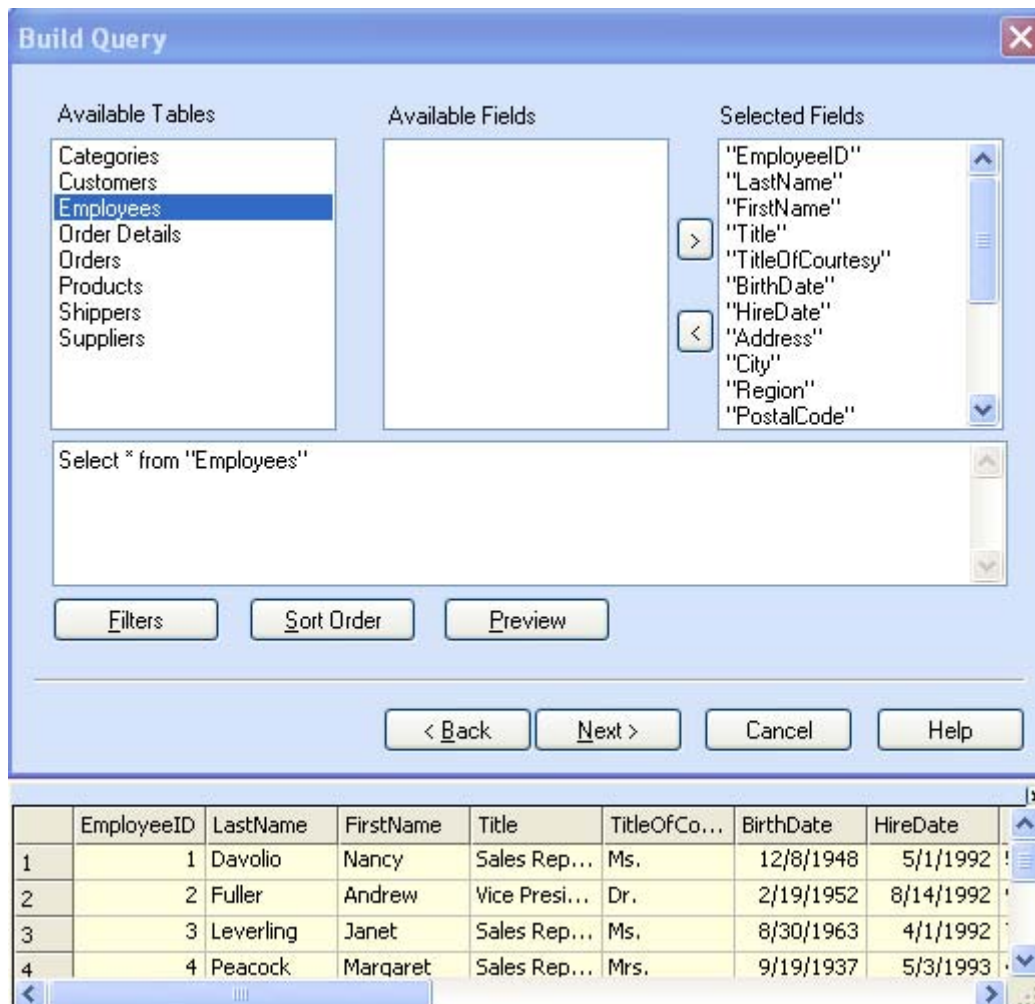
- **ODBC Database**

Databases compatible to ODBC can be selected using DSNs. Select a DSN from available DSNs of your machine. You can manage these DSNs by clicking on "Config" button.

While selecting database, you may be prompted to enter security authentication like User Name and Password.

### 3.2.4 Table Selection/Query Building

After completing database selection, you will be prompted to "**Build Query**" dialog, where you need to select a table from selected database. You will see screen like below:

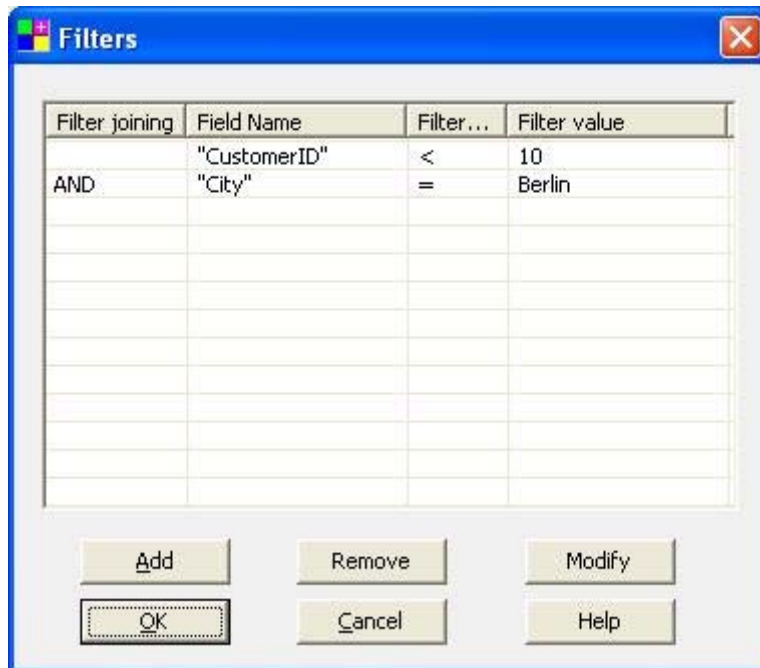


**Figure 6: Table Selection**

Select a table, select/deselect required fields to be included in database profile. Result of this table/field selection is shown in terms of SQL Select query to you. Use Ctrl + Left Click to select multiple table. You can directly edit this SQL Select query to result, as you want. You can enter any valid SQL select query, which may include table joining, filtering, sorting etc. Click on **"Preview"** button to obtain content preview, which are going to be included in profile. To manually apply filters and sort orders click on **"Filters"** and **"Sort Order"** buttons.

### 3.2.4.1 Applying Filters

In above figure, Fig. 5, click on **"Filters"** button, you will see following filter dialog:



**Figure 7: Apply Filter**

Here, you can apply as many filters as you want. Initially, one filter is shown, by default. Click on **"Add"** button to have more filters. Select check marks to those filters you want, select field from **"Field"** popup, select operator from **"Operator"** popup and click on **"Value"** edit box and enter value, which you want as a filter condition value.

[Remember, filter values must be proper as per data type of selected fields.](#)

If you selected numeric field, say ID, then filter value must be numeric, say 35. For character data type filter value must be included in single quotes ('). For date/time fields, filter value must be in #. If you select filter operator IS then filter value must be NULL or NOT NULL. If you select filter operator like then filter values must be a pattern included in single quote.

Here are some examples of filters.

```

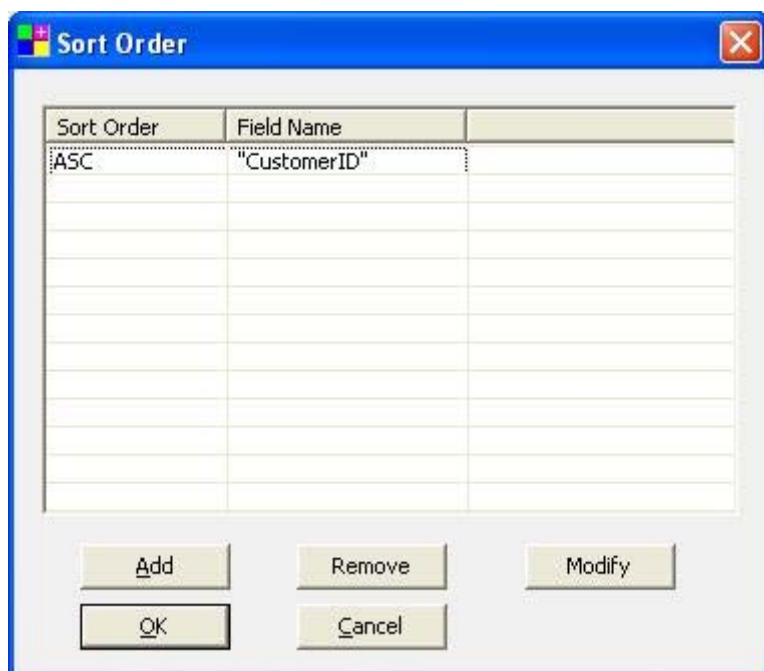
PhoneNO IS NULL
Name IS NOT NULL
name like 'a%' : Name starting with letter a
name = 'John'
amount >= 2000
birthdate = #1/1/1978#
time >= #2:10#
birthdate >= '1-jan-1978'

```

**Note:** Using # for filter conditions values may change depending on which database you are using. MS Access, Excel allows to uses # where as Oracle, SQL Server allows to use single quote (') for date filter values.

### 3.2.4.2 Applying Sort Orders

In Fig. 5, click on "**Sort Order**" button, you will see following sort order dialog:

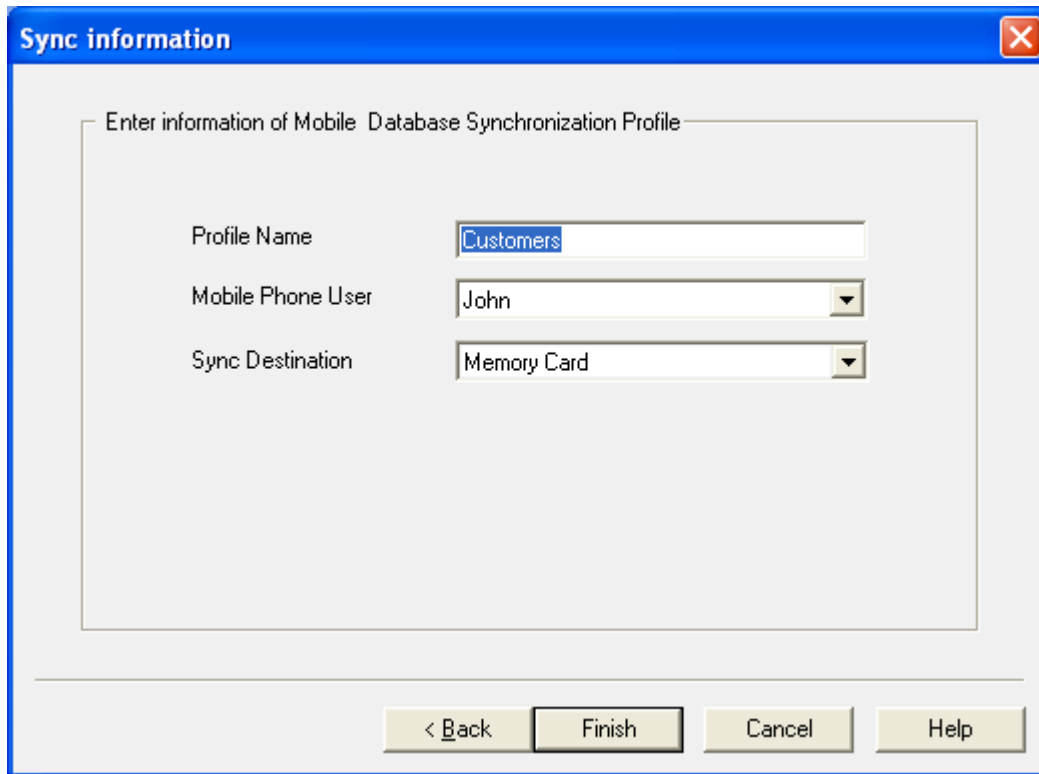


**Figure 8: Apply Sort**

Select check mark for those you want to apply sort order. Select sort order as "**Ascending**" or "**Descending**", select field from "**Available Fields**" popup. To add more filters, simply click on "**Add**" button

### 3.2.5 Sync Information

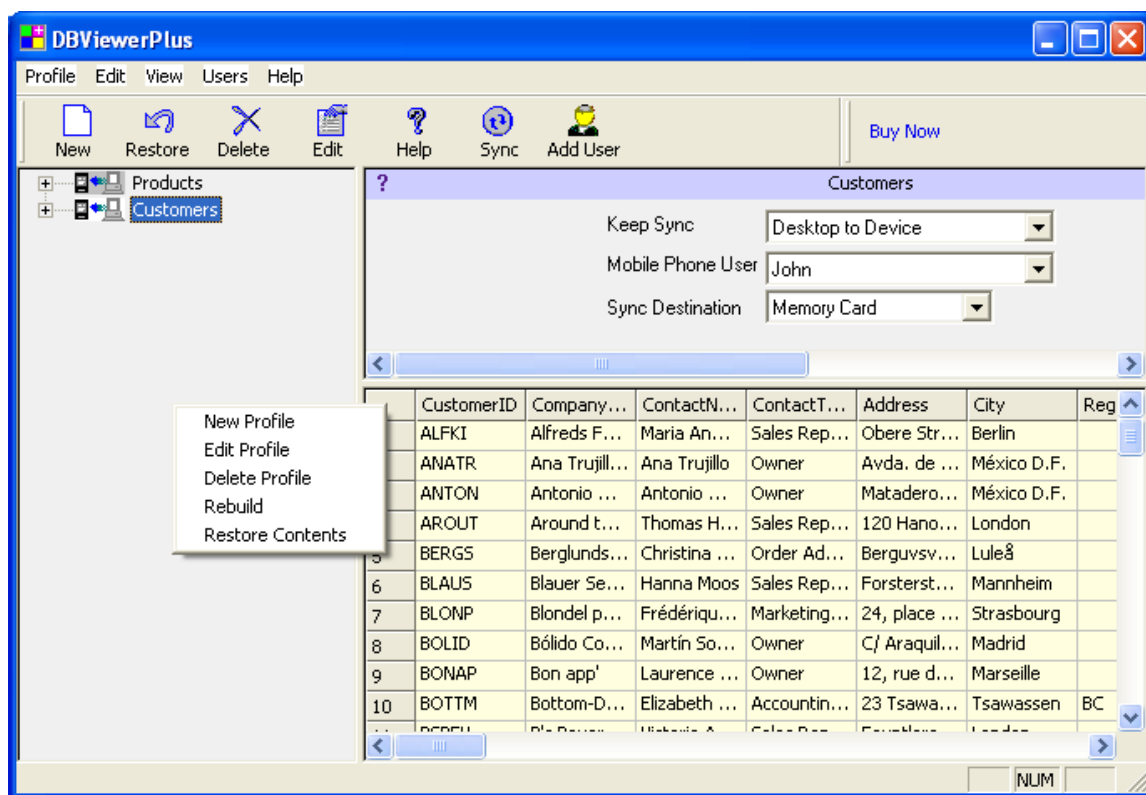
After table selection, filters & sort orders, you will come to last step of Profile creation, "Sync Information"



**Figure 9: Select User and database destination on mobile**

Modify profile name. Select proper Mobile phone user for which you want to create database profile. Finally select sync Destination, "Memory card" or "Main memory" of mobile phone.

Click on Finish to finish new profile creation. After finishing, you will get profile in left pane of DBViewerPlus. Click on profile, database content preview will be shown on right pane of DBViewerPlus window.



**Figure 10: Edit Profile**

## 3.2.6 Modifying Existing Profile

### 3.2.6.1 Renaming Profile

Select a Database Profile from left pane of DBViewerPlus. Click on "Edit" from Profile menu/toolbar/right click menu. You will be prompted to enter profile name. Enter new name and select "Change" button to rename profile.

### 3.2.6.2 Rebuilding Query

Select a profile, expand it, and select "Query" property. Select edit from Profile menu or tool bar or right click on "Query" property, as shown below, and select "Rebuild...", you will get "Build Query" dialog, as that of in "Table Selection/Query Building" step.

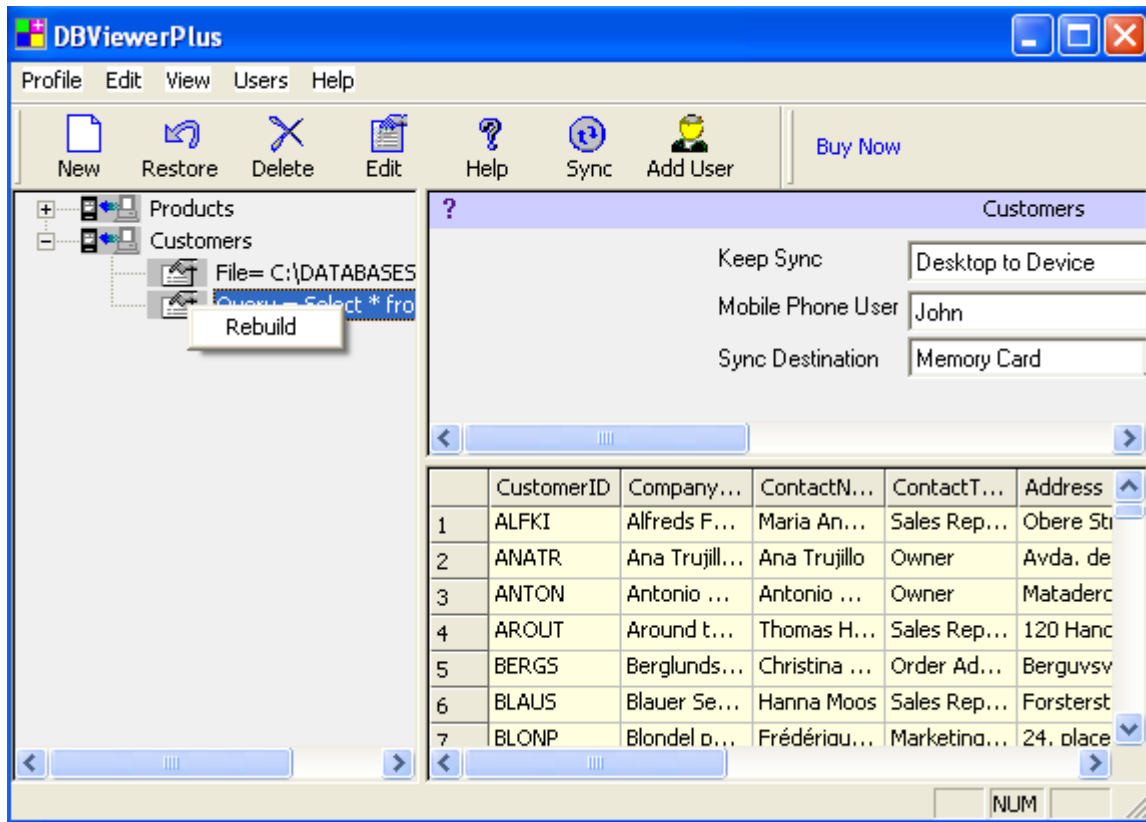
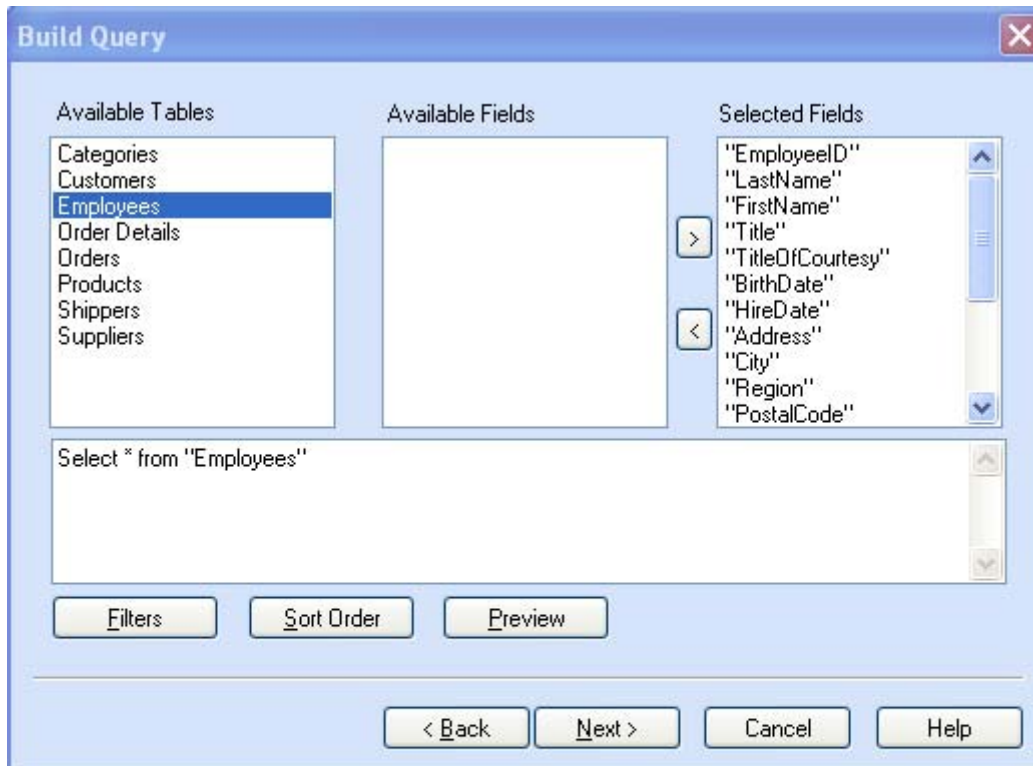


Figure 11: Rebuild Query



Build Query

Available Tables

- Categories
- Customers
- Employees**
- Order Details
- Orders
- Products
- Shippers
- Suppliers

Available Fields

Selected Fields

- "EmployeeID"
- "LastName"
- "FirstName"
- "Title"
- "TitleOfCourtesy"
- "BirthDate"
- "HireDate"
- "Address"
- "City"
- "Region"
- "PostalCode"

Select \* from "Employees"

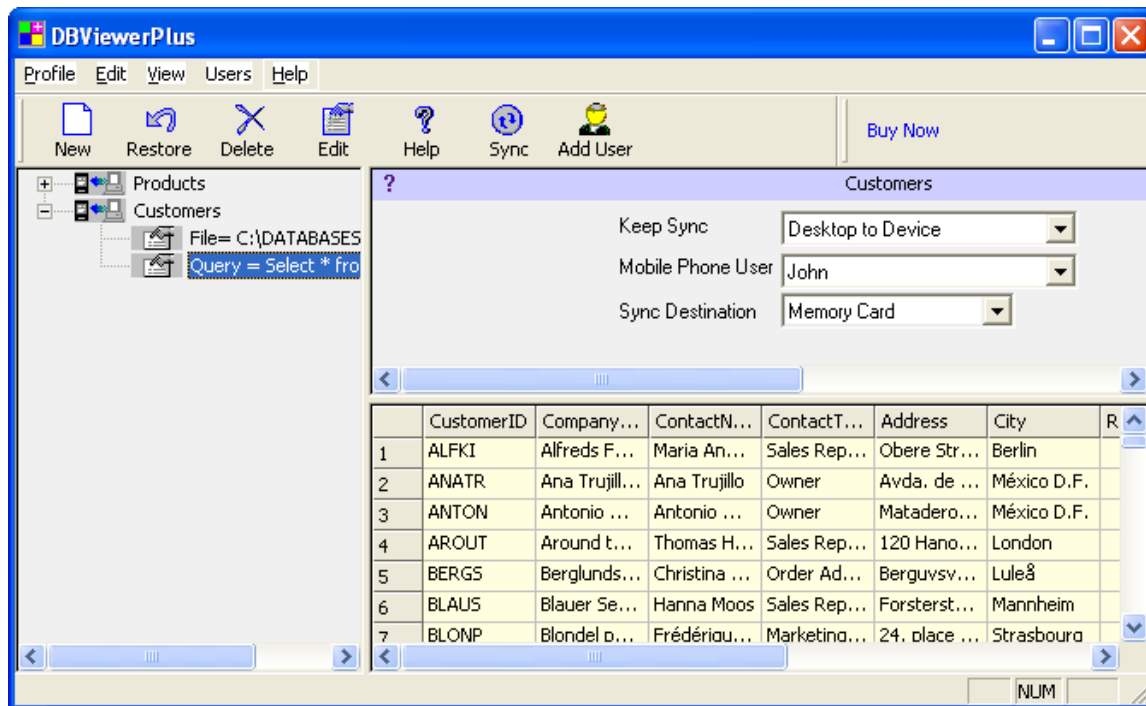
Filters    Sort Order    Preview

< Back    Next >    Cancel    Help

	EmployeeID	LastName	FirstName	Title	TitleOfCo...	BirthDate	HireDate
1	1	Davolio	Nancy	Sales Rep...	Ms.	12/8/1948	5/1/1992
2	2	Fuller	Andrew	Vice Presi...	Dr.	2/19/1952	8/14/1992
3	3	Leverling	Janet	Sales Rep...	Ms.	8/30/1963	4/1/1992
4	4	Peacock	Marqaret	Sales Rep...	Mrs.	9/19/1937	5/3/1993

From above "Build Query" dialog, you can modify table, Query, Filters and "Sort Orders".

### 3.2.6.3 Modifying Sync Properties



**Figure 12: Change Sync Type**

Here, you can change syncing type. You can switch between "Desktop to Device" or "Device to Desktop" profile type. It will change way of data transfer. Select "Do not Sync", if you want to disable profile from syncing. You can change Mobile phone user for which profile is created.

### 3.2.7 Deleting Profile

Select a profile, which you want to delete, from right pane of DBViewerPlus. Right click on it, and select "**Delete Profile...**" or from profile menu/toolbar select "**Delete**". You will be confirmed about profile deletion. Deleting profile will also delete backup data taken by DBViewerPlus during syncing process.

## 3.3 Import Mobile DBViewer Plus data as a .csv

You can import Mobile Side database as a .csv on your PC. Connect your device to PC and use "Import" menu available on desktop DBViewer Plus application. Your device Side DBViewer Plus application should be closed while using this option. You will get following dialog when you choose this option. This dialog box shows the list of tables available on device, select the table, which you

want to import to PC as a .csv and Press "Import" button. It will ask you the location where you want to save this csv file. After selecting the location your device side database will be saved as a .csv file.

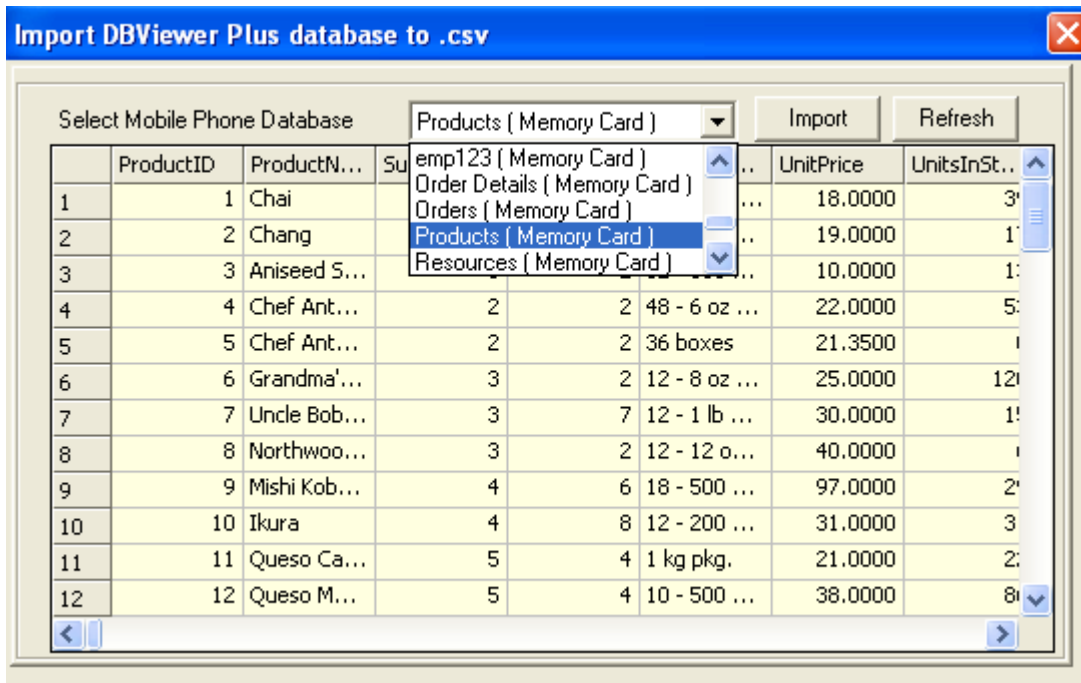


Figure 13: Import data as a .csv

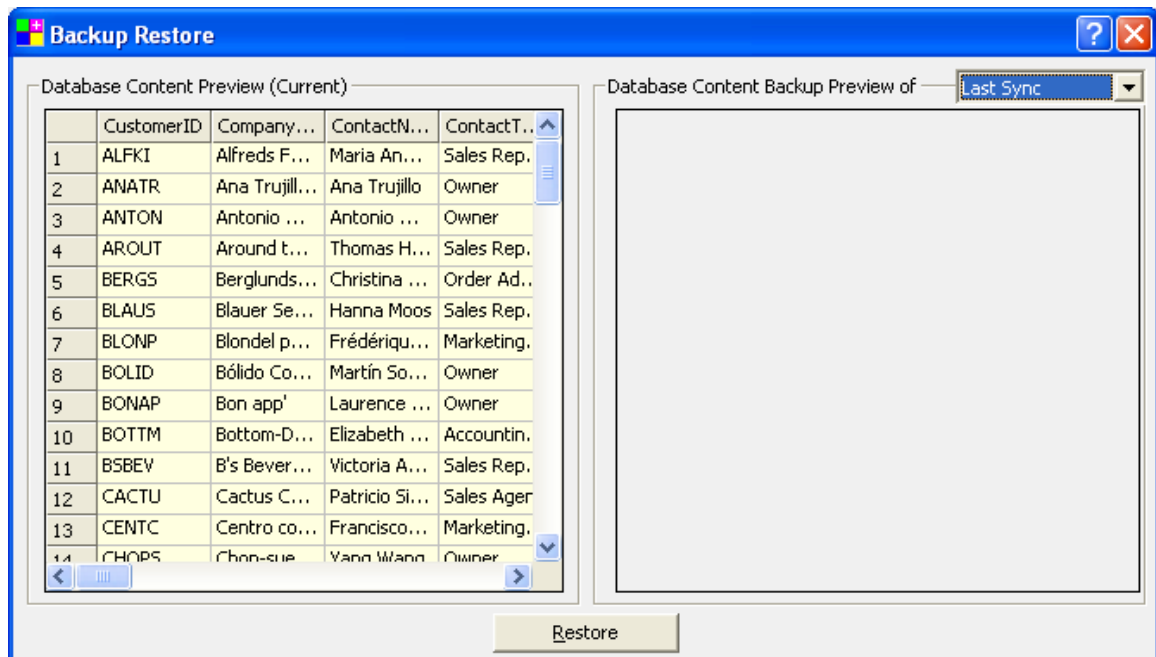
## 3.4 Recovering Lost Data

### 3.4.1 Taking Backup

Users need not to take explicit backup of particular database. "Desktop to Device" do not have risk of losing desktop data, but for "Device to Desktop" profile, there are chances of losing valuable desktop data. While syncing "Device to Desktop" profile, DBViewerPlus takes backup of desktop data before transferring Device data into it. Backup of last four syncing is stored with DBViewerPlus. Refer "[Restore Data](#)" step for putting back this backup into original desktop database.

### 3.4.2 Restoring Data

Select a profile from DBViewerPlus. Right click on it and select "**Restore Contents...**" or from Profile menu/toolbar select "Restore Contents..". You will see dialog as of following:



**Figure 14: Restore data**

In left pane of this dialog, you will see the current contents of desktop database. In right pane, you will see the backup contents. There are backup contents of last four syncing. Select appropriate backup form popup list. If you feel that you have lost some of your original data from original desktop database (left pane), select appropriate backup and click on "**Restore**" button. This will put backup data into original desktop database.

## 4 DATABASE VIEWER PLUS ON MOBILE

### 4.1.1 Open Database

When you start application you will get the list of available databases on your mobile.

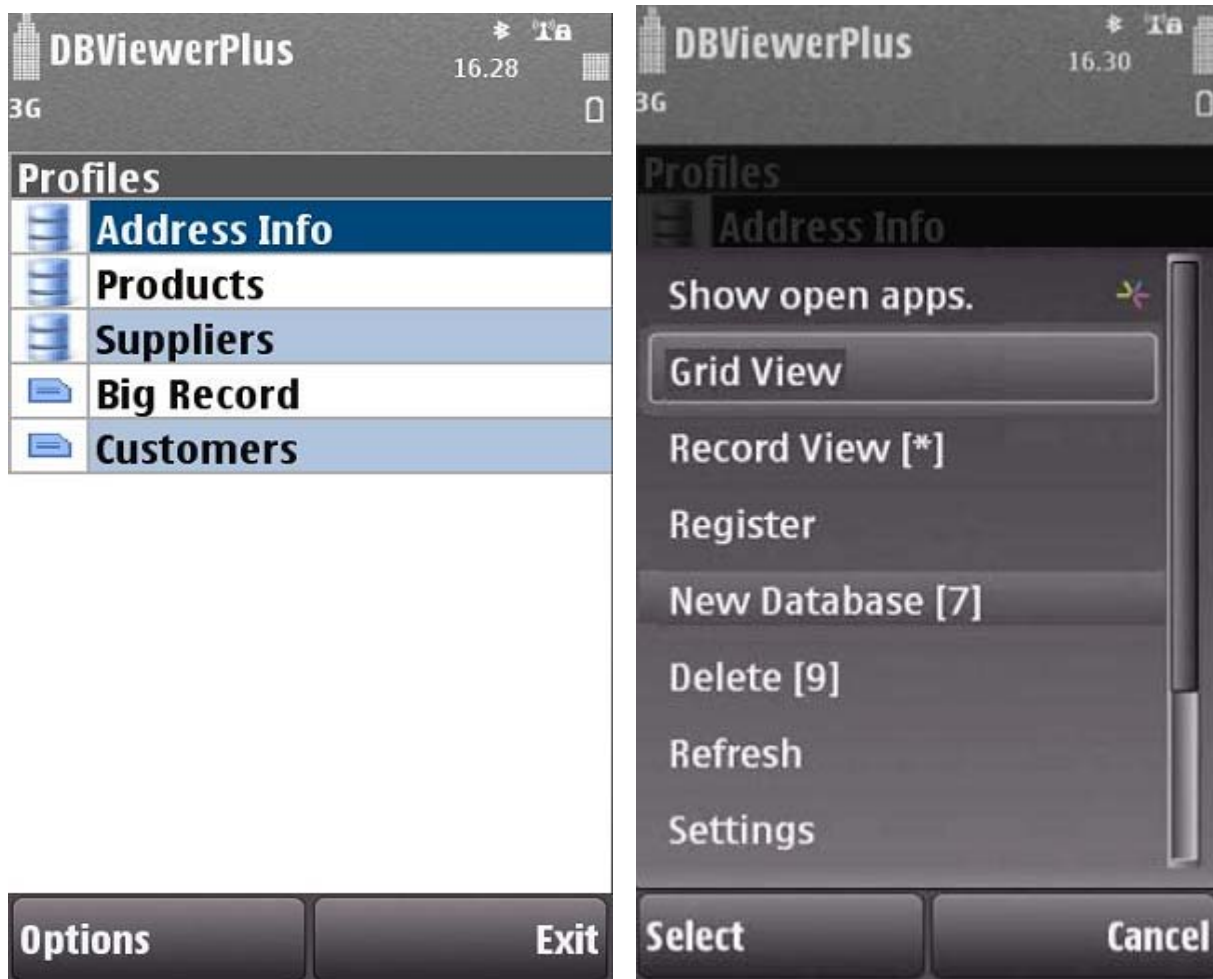


Figure 15: Home Screen of DBViewerPlus on mobile

### 4.1.2 View Database Contents

Now select database you want to view and Press **Center** Button of Joy stick or from the **Option** menu select **Grid View** or **Record View** submenu. You can also view specific field in detail mode by pressing **Detail**. Following figures show All records at once, Single Record. Use **Delete** menu to delete specific database on mobile.

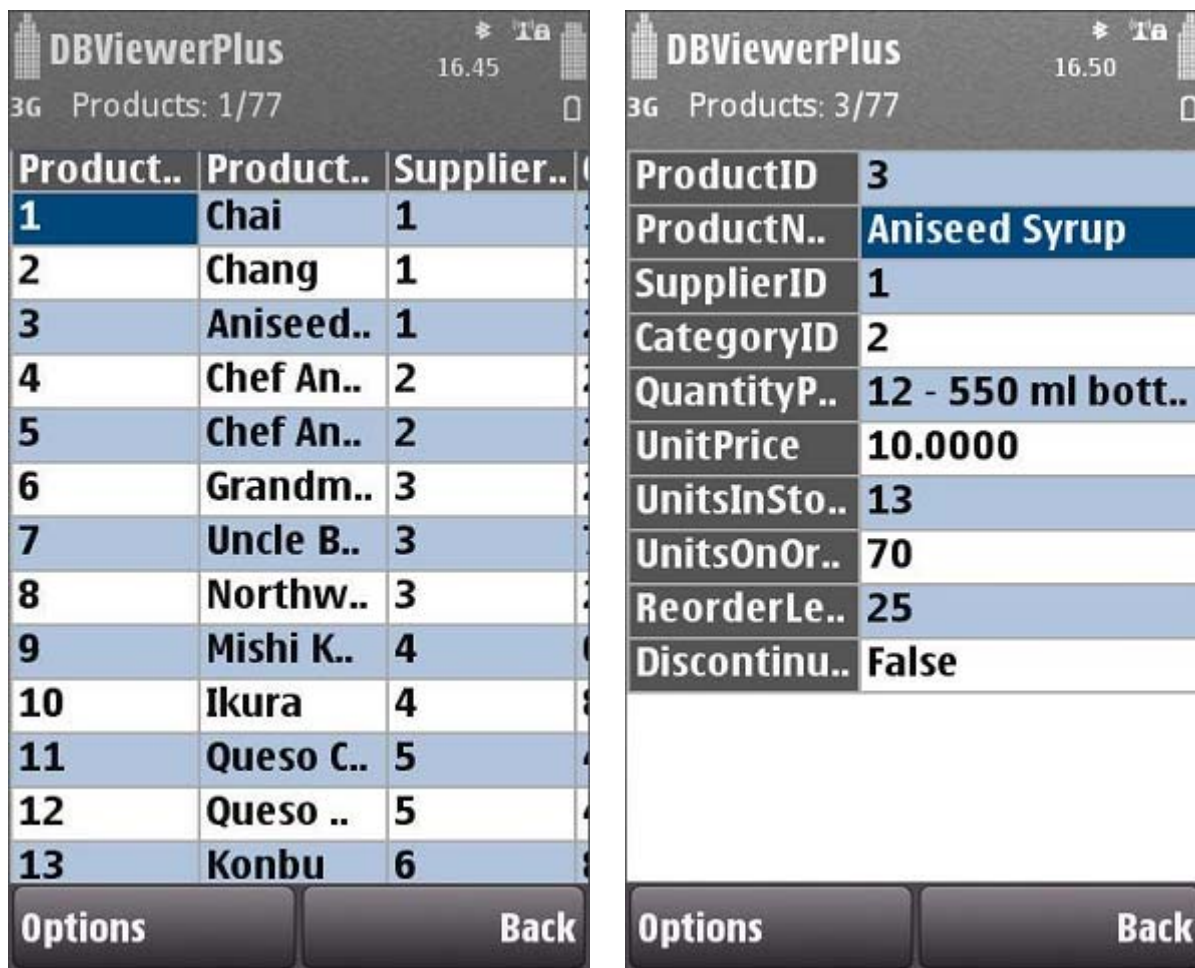
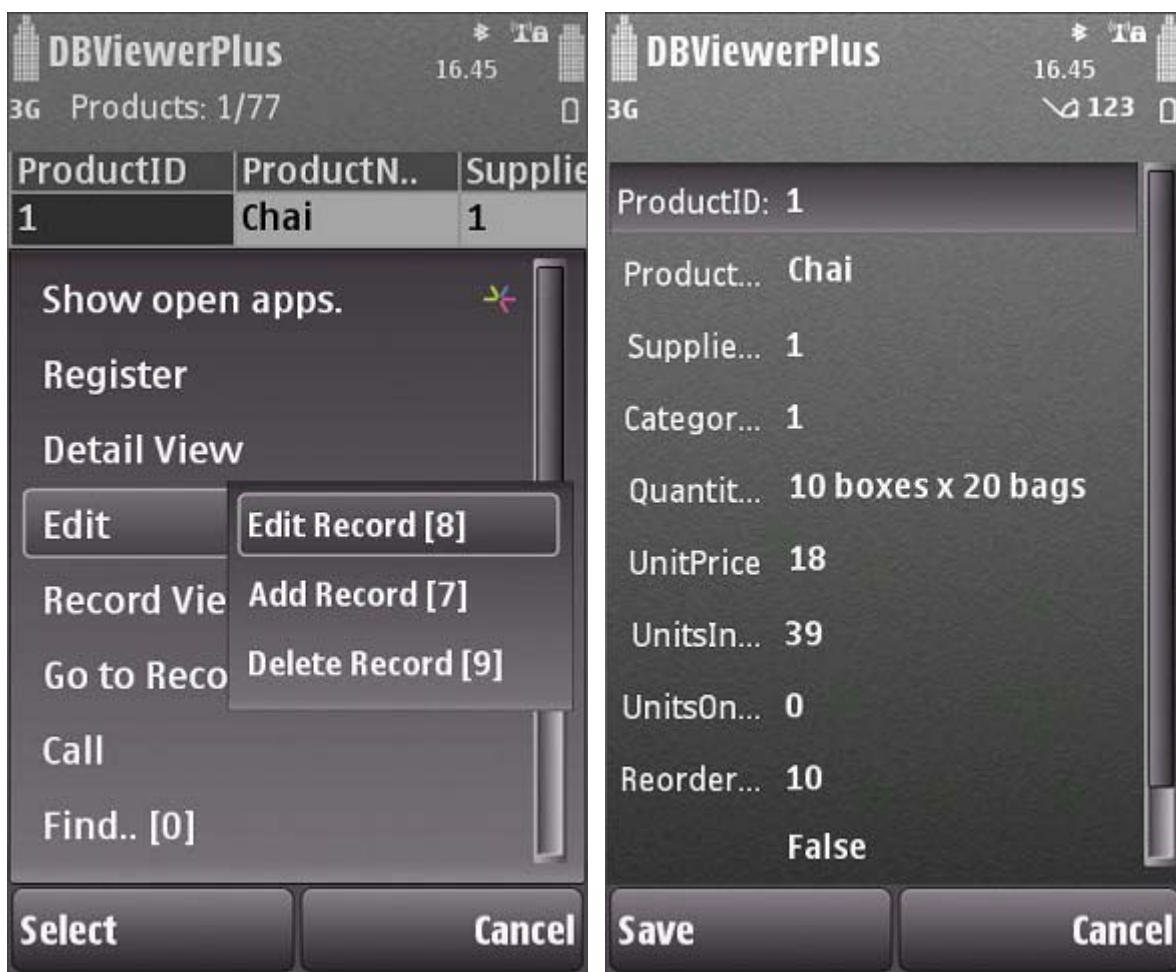


Figure 16: Multiple and Single Record View

#### 4.1.3 Edit Database Contents

You can Add/Edit/Delete record in your database. Use **Add Record** to add new record. **Edit Record** to edit selected record. Use **Delete Record** to delete selected record.



**Figure 17: Add/Edit/Delete Record on mobile**

#### 4.1.4 Create New Database

Use **New Database** to create new database on your device. You can import this database on desktop as .csv file.

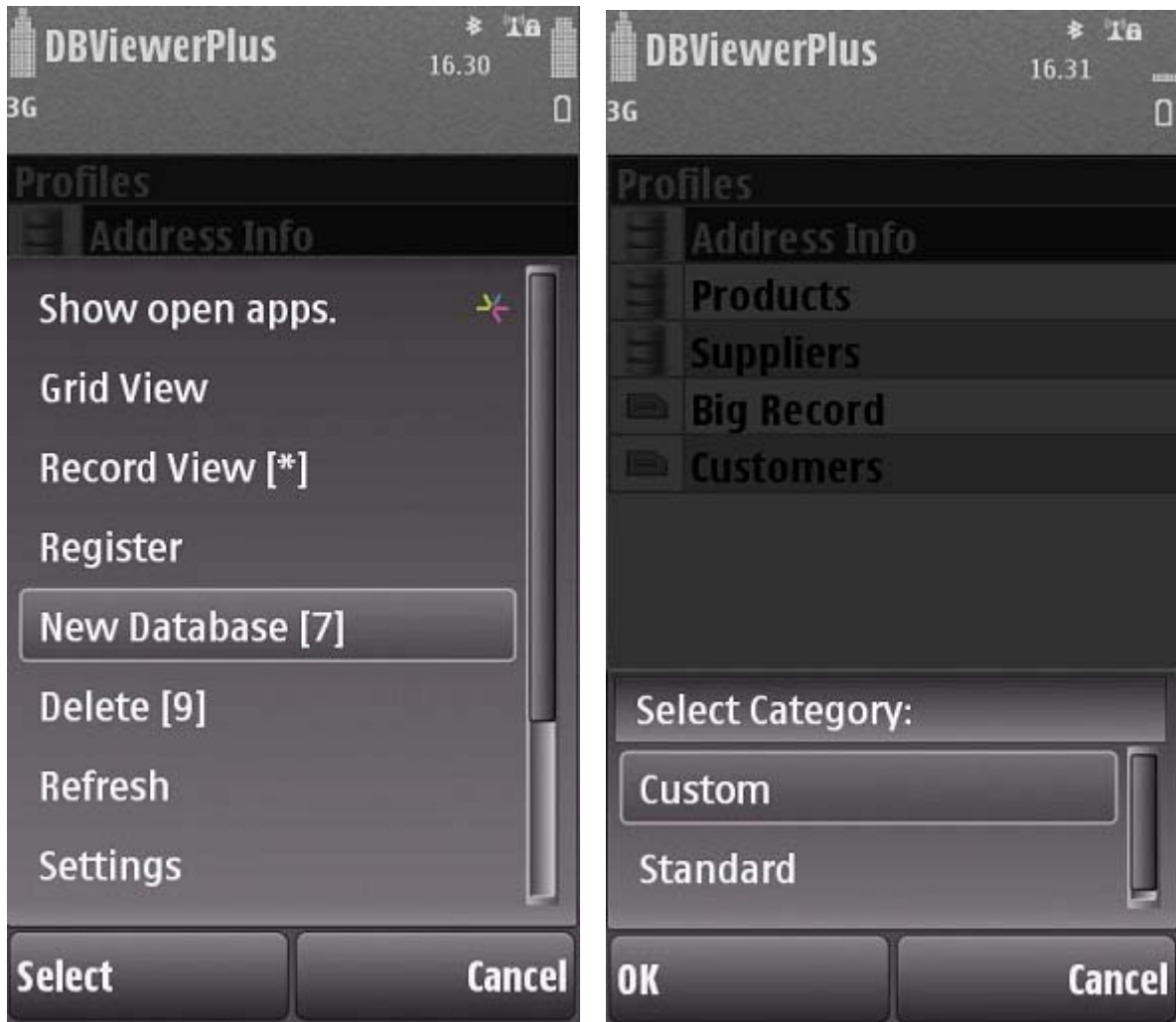
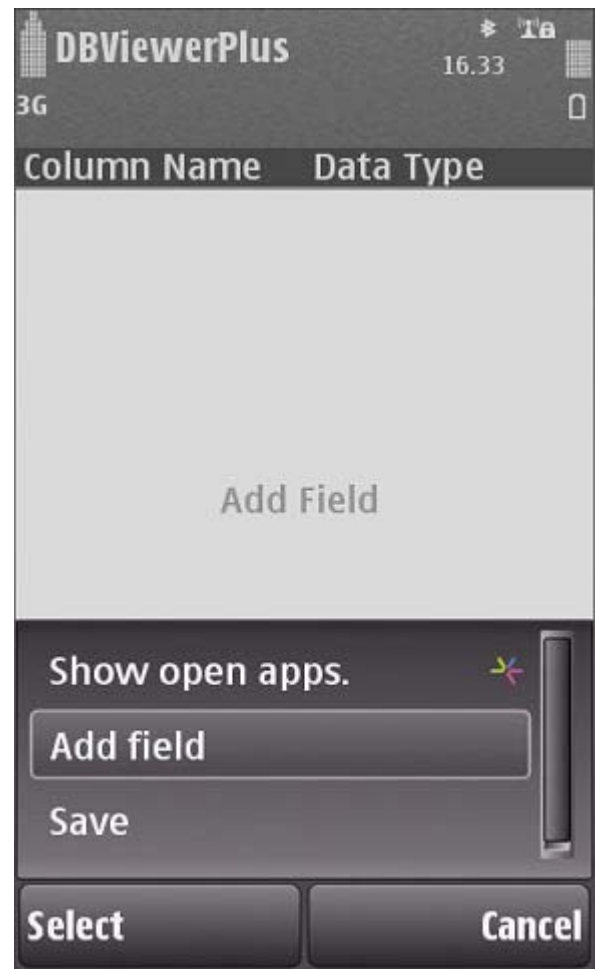
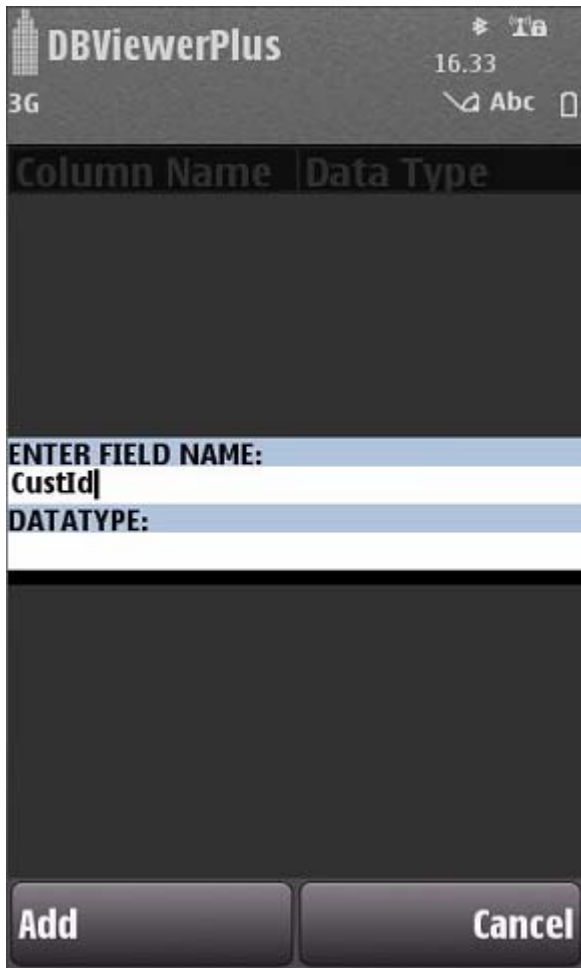
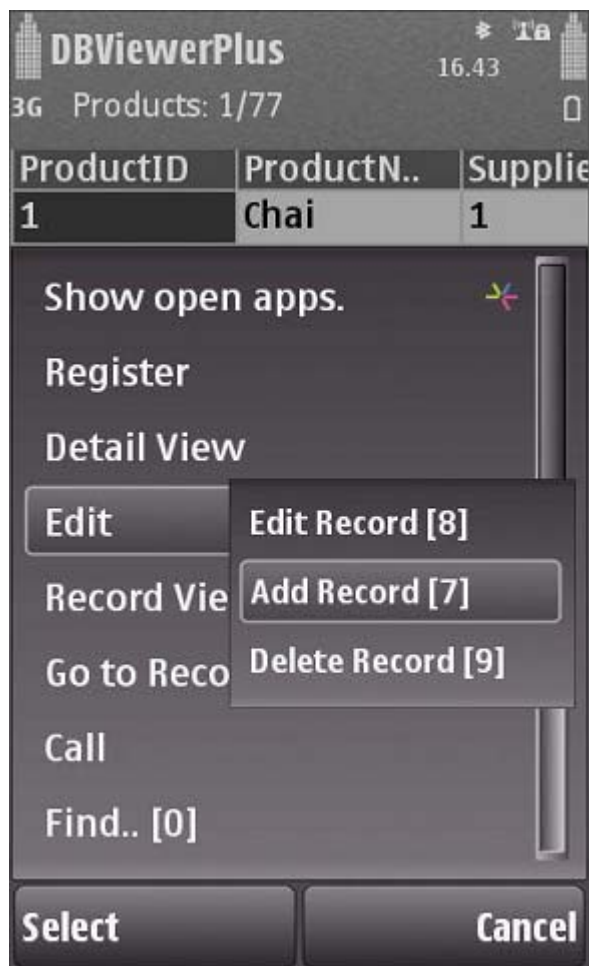


Figure 18: Create new Database on mobile

#### 4.1.5 Custom Database:







**Figure 19: Create Custom Database**

After creation of new database, use "Add Record" menu to add records in your newly created database.

#### **4.1.6 Standard Database:**

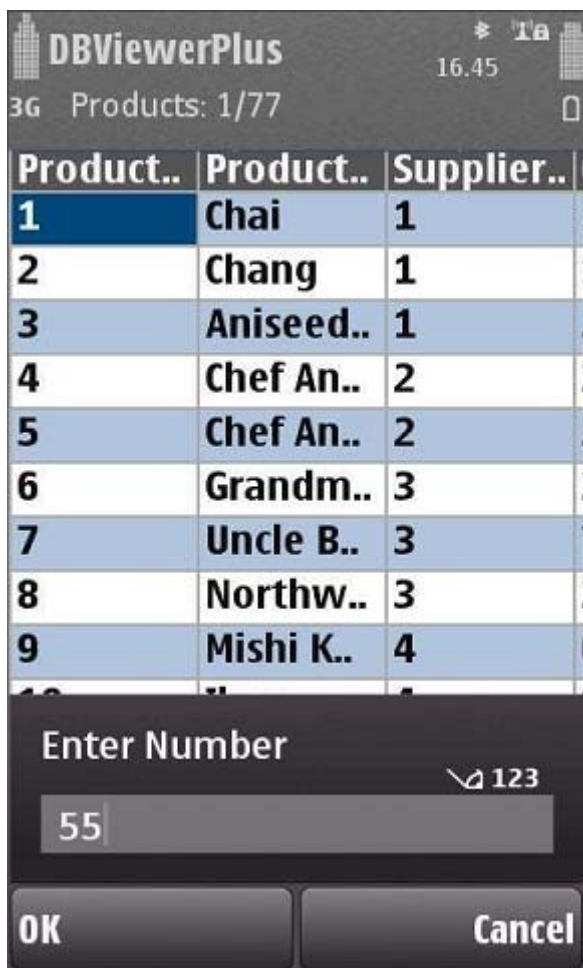
Here software has provided some standard databases which user needs in his daily life.



**Figure 20: Create Standard Database**

#### 4.1.7 Go To Record

On the Grid View or Record view, you will have menu "Go To Record". Use this menu to go on particular record.



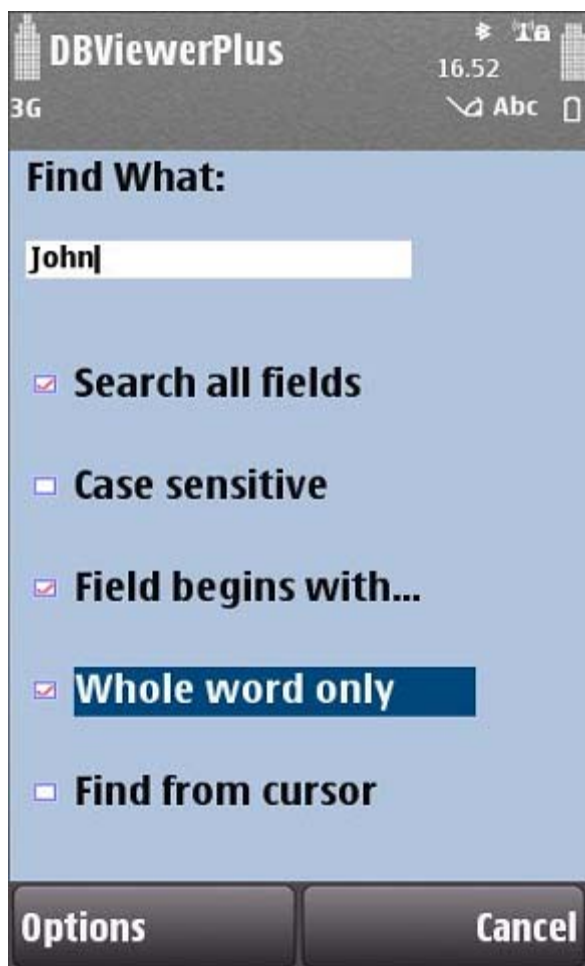
**Figure 21: Go To Record**

#### 4.1.8 Call

In Grid or Record view, you will have “**Call**” menu, use this menu to make a phone call for the selected field's numeric contents, which will be treated as a phone number.

#### 4.1.9 Search Text

Select **Menu** > **Find** or **Numpad 0** to find specific data from your database.



**Figure 22: Search Data on Mobile**

Here while searching you need to enter a search string. You can search within all fields of a table or within a selected single field. Search can be case sensitive. "Field begins with text" option searches specified string at the start of each field. You can search for numeric, string, date, time or any other type of field depending on its display format in record view. Search result will be shown as first row and first column. Use **Find Again** or **Numpad #** for next search. You can find whole word and data from the current cursor location also.

#### **4.1.10 Math on Column**

On Grid View or Record View, you have menu "Math on column". Use this menu to calculate Sum, Average, Maximum, and Minimum on particular column data. There are submenus Sum, Average, Maximum, and Minimum available. Use Sum submenu, if you want to get sum of particular column data. Same way, use Average/ Maximum/ Minimum submenu.

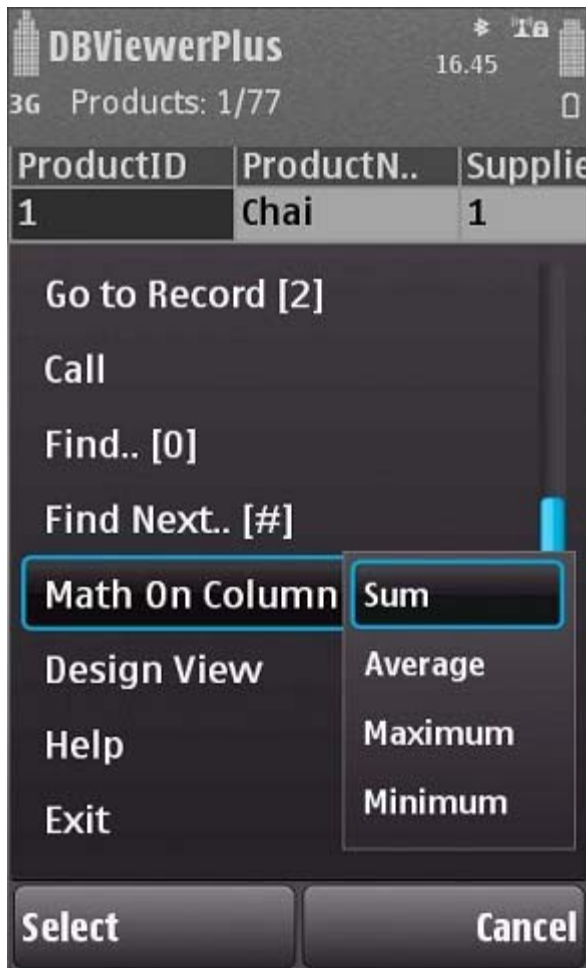
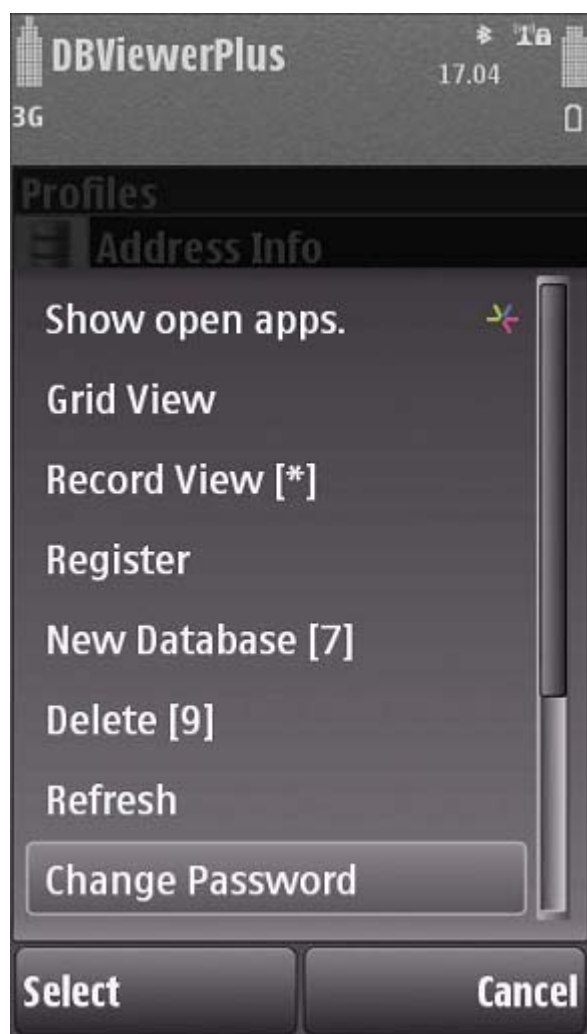


Figure 23: Math On Column

#### 4.1.11 Change Password



**Figure 24: Change password**

To change password, you must know your old password.

#### 4.1.12 Settings



**Figure 25: Settings of Mobile side application**

Settings Form allows you to change the column width in Grid View. Change the **color** of "Column Name" in Grid view using "Column Text Color" option. Use "Record Text Color" option to change the color of text content. You can Enable/Disable password settings, by pressing center button of your device; you can change the Password Protection settings to "Enabled/Disabled password".

#### 4.1.13 Shortcut Keys

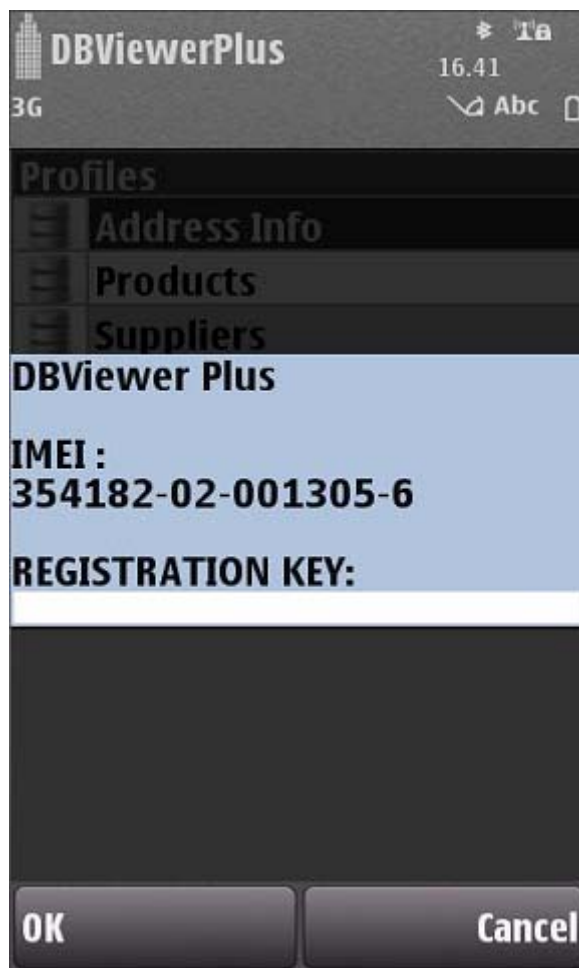
The software also has shortcut keys to perform these operations.

Keys	Description
	Home Screen
7	New Database

9	Delete Database
	<b>Grid/ Record View</b>
*	Switching between Grid & Record View
1	Move to First Record
2	Go to particular Record
3	Move Last Record
9	Delete Record
0	Find
#	Find Again
8	Edit Record
7	Add Record

#### 4.1.14 Application Registration

On the home screen of DBViewer Plus software, Select **Menu** -> **Register** to register Mobile DBViewer Plus.



**Figure 26: Software Registration**

Registration form shows IMEI of your mobile. Submit this IMEI while purchasing this software to get registration code. Use registration code on this form and it will register the software.

#### **4.1.15 Limitation after evaluation period**

Software has one-day evaluation period. In one-day evaluation, software works with all features and functionalities. After one-day evaluation, user will be able to view only seven records of any database and Add/Edit/Delete record menu will not be available.

## 5 SUPPORTED DATA TYPES

---

Currently Wireless Database Viewer supports following data types.

- Memo, Char, VarChar, VarChar2
- Number of type: Byte, Decimal, Integer, Long Integer, Single, Real, Float, Double
- GUID
- Date/Time
- AutoNumber of type: Long Integer
- Yes/No
- Hyperlink
- Currency

## 6 SYSTEM REQUIREMENT

---

### **PC:**

Windows 98, Windows 2000, Windows 2003, Windows 2008, Windows XP with Service Pack 2, Windows Vista

### **Device**

Symbian OS 9.1 or above

## 7 CONTACT US

---

You can use the following email addresses to contact us:

- Product support  
[support@cellica.com](mailto:support@cellica.com)
- Sales inquiries  
[sales@cellica.com](mailto:sales@cellica.com)