

BLACKBERRY WIRELESS DATABASE VIEWER USER GUIDE

PRODUCT VERSION: 1.0

CONTENTS

1	INTRODUCTION	5
1.1	FEATURES	5
2	INSTALLATION	6
2.1	DESKTOP INSTALLATION.....	6
2.2	BLACKBERRY INSTALLATION:.....	11
2.2.1	<i>Manual Installation</i>	12
2.2.2	<i>Over The Air (OTA) Installation</i>	12
3	USING THE WIRELESS DATABASE VIEWER ON THE DESKTOP	13
3.1	APPLICATION LOGIN	13
3.1.1	<i>Profile Manager</i>	13
3.2	ADD PROFILE	14
3.2.1	<i>File based Database Selection</i>	14
3.2.2	<i>DSN based Database</i>	17
3.2.3	<i>Applying Filters</i>	18
3.3	EDIT PROFILE	19
3.4	REMOVE PROFILE.....	19
3.5	CHANGE ONLINE STATUS	19
3.6	CHANGE DEVICE ID AND PASSWORD:	20
4	USING THE WIRELESSDBVIEWER ON THE BLACKBERRY	22
5	BLACKBERRY KEYPAD SHORTCUTS	31
5.1	SCREEN : HOMESCREEN	31
5.2	SCREEN : GRID SCREEN AND RECORD VIEW SCREEN	31
5.3	SCREEN : DETAIL VIEW SCREEN	32
6	FREQUENTLY ASKED QUESTIONS	33
6.1	BLACKBERRY	33
7	SOFTWARE SUBSCRIPTION	35
8	SUPPORTED DATA TYPES	36
9	SYSTEM REQUIREMENT	37
10	CONTACT US	38

LIST OF FIGURES

Figure 1: Installation Start	6
Figure 2: Installation Edition.....	7
Figure 3: Installation mode.....	8
Figure 4: Computer identification	9
Figure 5: Installation Information	10
Figure 6: Installation Path	11
Figure 7: Database Viewer Login.....	13
Figure 8: Profile Manager	14
Figure 9: File based Database Selection.....	15
Figure 10: Database Selection	16
Figure 11: Select Excel View Dialog	16
Figure 12: Build Query Dialog.....	17
Figure 13: Apply Filter.....	18
Figure 14: Filter type	18
Figure 15: Apply Sort Order	19
Figure 16: Change Online Status.....	20
Figure 17: Change PIN and Password.....	21
Figure 18: BlackBerry Login Form.....	22
Figure 19: Profile Fetching at Startup	23
Figure 20: Fetched Profiles	23
Figure 21: Sync Data Menu.....	24
Figure 22: Syncing data.....	24
Figure 23: Grid View and Record View.....	25
Figure 24: Search within single Field.....	26
Figure 25: Edit Profile and Autosync option.....	27
Figure 26: Autosync Profile	27
Figure 27: Select Column.....	28
Figure 28: Apply Filter.....	28
Figure 29: Apply Sort.....	29
Figure 30: Preferences.....	30

Figure 31: Various icons30

1 INTRODUCTION

Being away from your office does not mean not having the access to your data. Consider the scenario when you want to carry a copy of the database on your BlackBerry device, or want to update the data on your BlackBerry device. Now it is possible with the BlackBerry Wireless Database Viewer.

BlackBerry Wireless Database Viewer allows you to be more productive by allowing you to view the database contents on your BlackBerry. BlackBerry Wireless Database Viewer allows to sync with Microsoft Access, Microsoft Excel, and any ODBC Compliant database like Oracle, SQL Server, etc. The software package consists of two software: the BlackBerry DBViewer Desktop that runs on Microsoft Windows, and BlackBerry DBViewer that run on the BlackBerry. You will use the desktop software to create the database profiles (make the list of database) and make this software online so that your BlackBerry can connect to it. BlackBerry DBViewer will Fetch this the profiles and data, and view the contents of the database.

In addition, you edit the queries on BlackBerry and fetch data according to updated query.

1.1 Features

- Get any desktop data **Wirelessly** on your BlackBerry.
- Sync updated desktop data at any time.
- Apply SQL Select queries, filters and Sort the fields and fetch data according to it.
- Autosync option that fetches desktop data automatically after configured interval.
- Supported Databases: MS Access, MS Excel, Oracle, SQL Server, FoxPro, dBase and any **ODBC Compliant Database**.
- Make a phone call for the selected field's numeric contents, which will be treated as a phone number.
- Find and Find again option to search a record.
- Easy navigation in both Record and Grid view using shortcut keys.

2 INSTALLATION

2.1 Desktop Installation

You should download **WirelessBBDBViewer.exe** file if you have not done it already.

Please make sure that your computer is connected to the Internet.

Double Click on this Setup file, this will show following screen. This screen checks Internet connection.

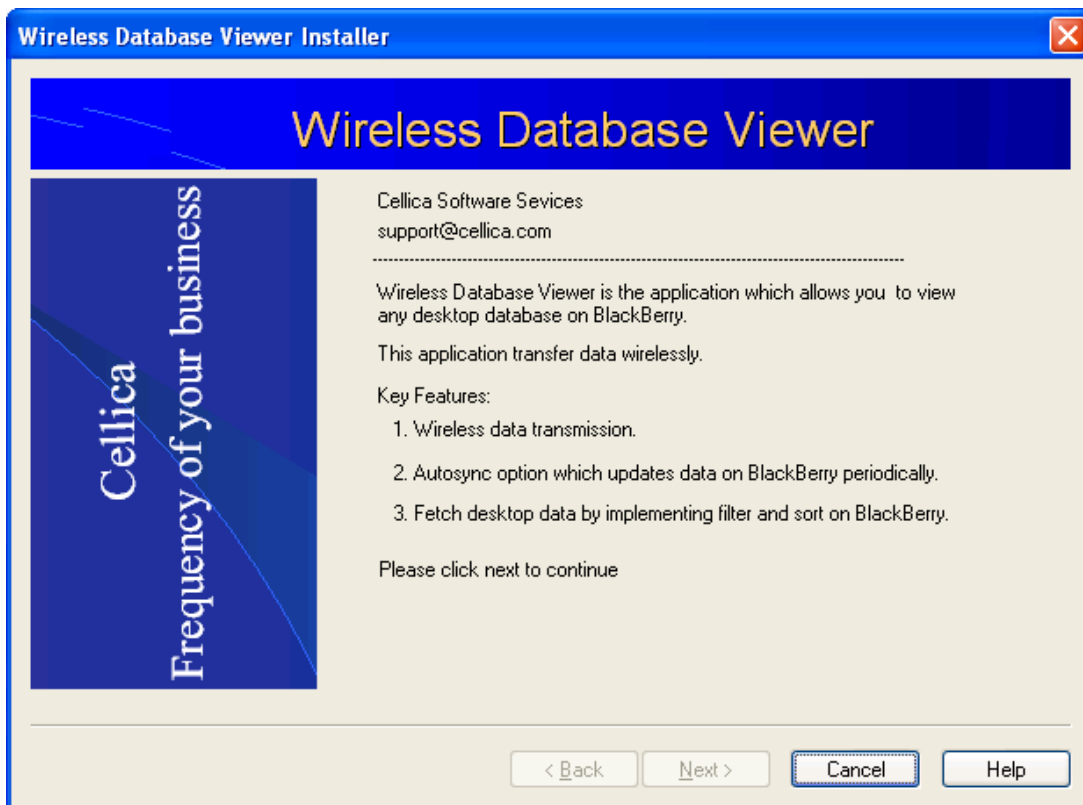


Figure 1: Installation Start

Now it will show following screen with default settings to Personal Edition..

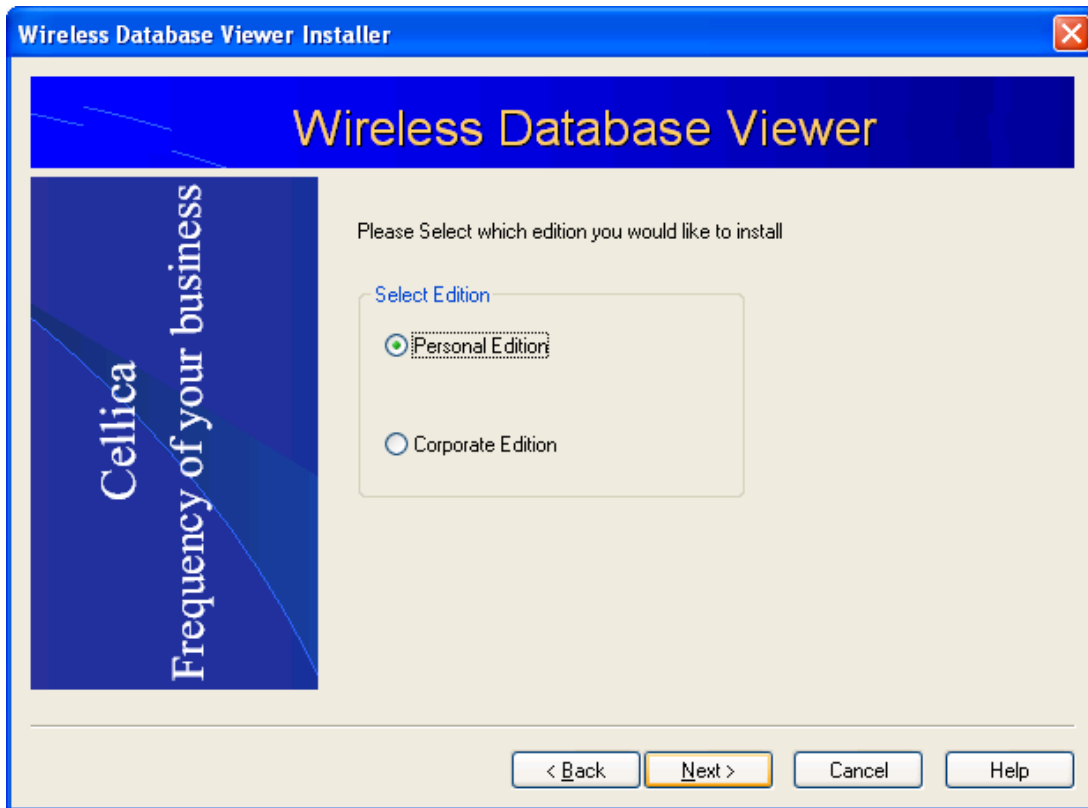


Figure 2: Installation Edition

Next Screen will show the “New Installation” and “Modify” option. If you are installing the software for the first time then select New Installation option.

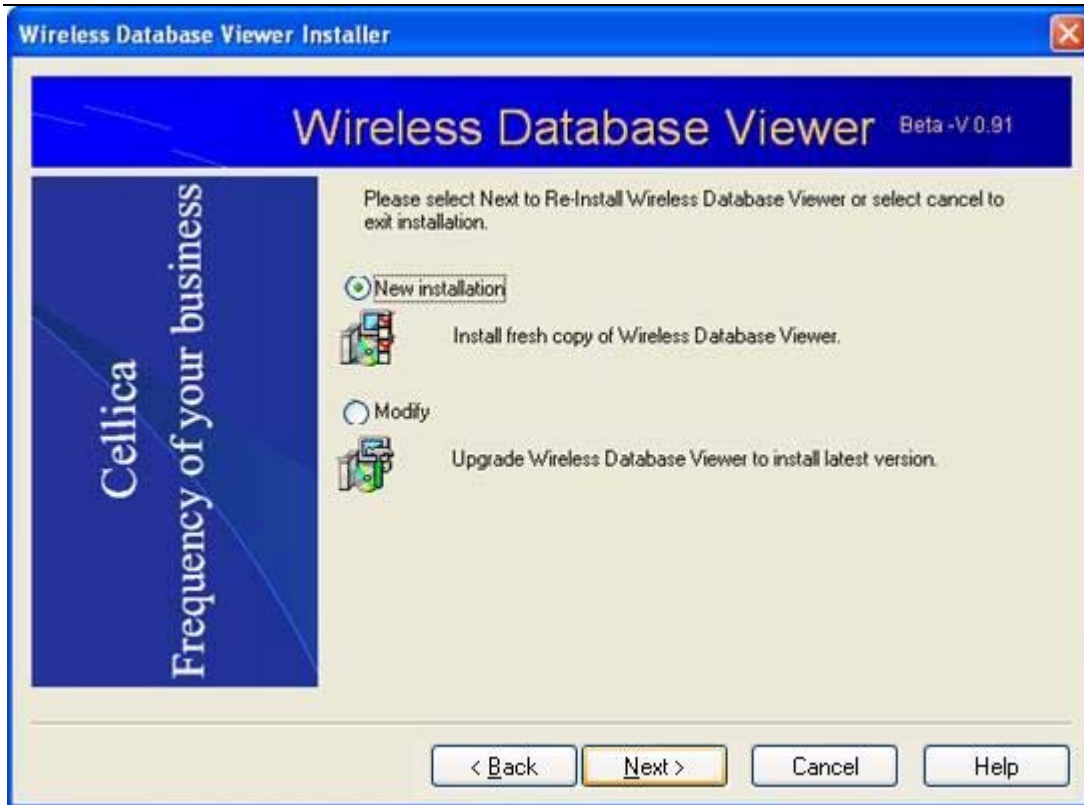


Figure 3: Installation mode

Now on the next screen you have to enter unique id of your computer. You can enter input upto 12 characters. Also, enter the password that you need to use for login into the desktop component of Wireless DBViewer application.

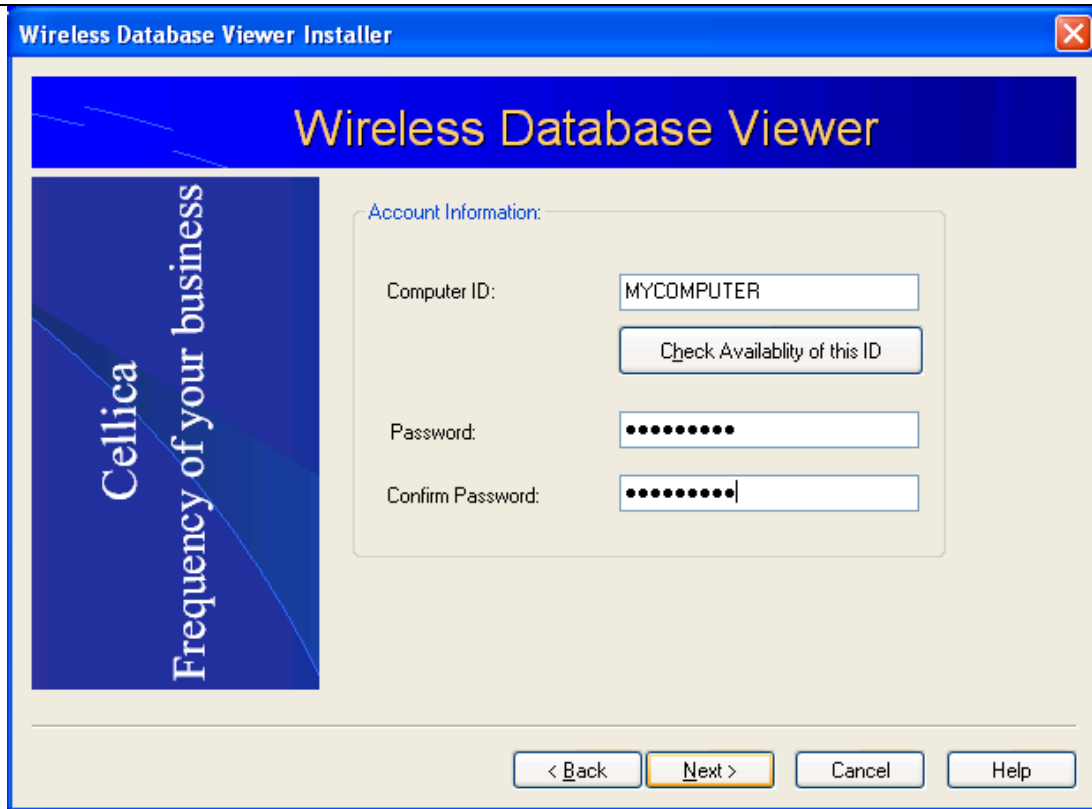


Figure 4: Computer identification

Now you need to enter PIN of BlackBerry on which you want to view the data. Also enter your personal information.

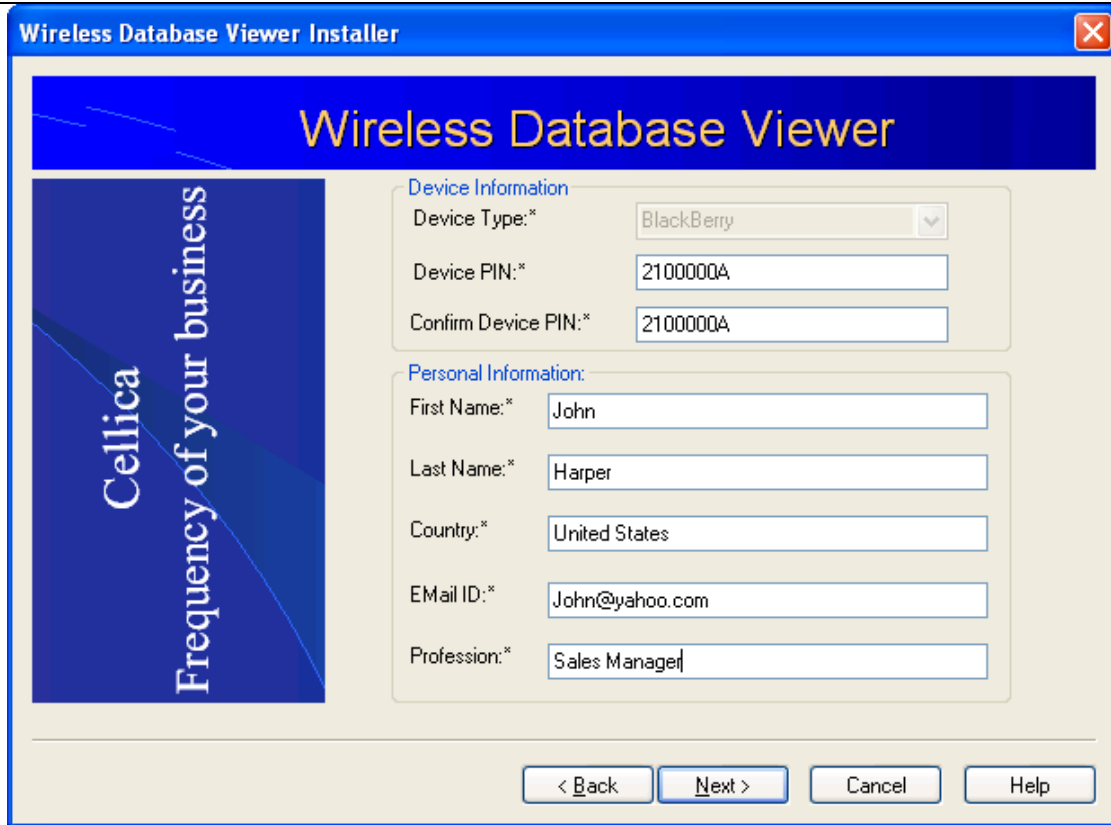


Figure 5: Installation Information

On next screen, select the path where you want to install the software.

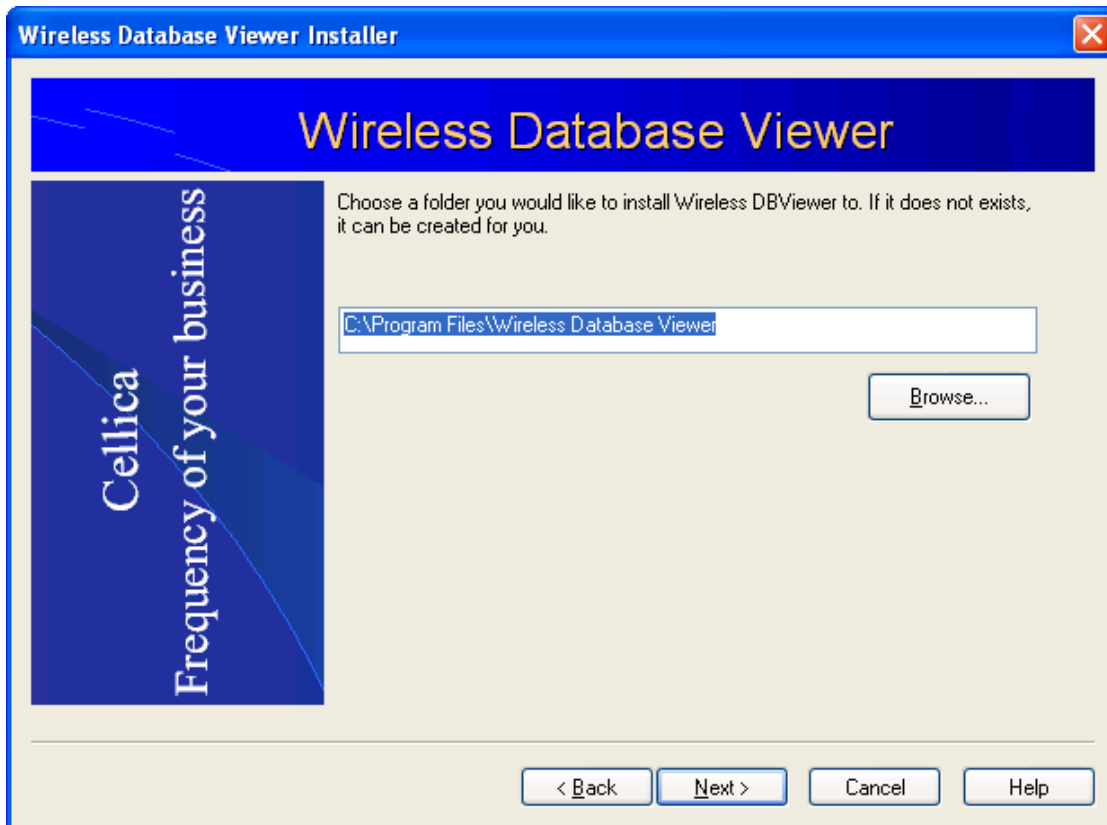


Figure 6: Installation Path

Wireless Database Viewer folder contains WDBViewer.exe and “**BlackBerry Installation Files**”, this folder contains .alx and .cod file.

Shortcut for Desktop application **WirelessDataBaseViewer.exe** and User Guide is available on your desktop.

2.2 BlackBerry Installation:

You need to install three applications on your BlackBerry.

1. Commn_rdbv
2. wdbviewer
3. autosyncrunner

There are two ways to install above applications on BlackBerry.

1. Manual Installation.
2. Over the Air (OTA) installation.

2.2.1 Manual Installation

Wireless Database Viewer folder contains “BlackBerry Installation Files” folder, this folder contains .alx and .cod files. You need to install **Comm_rdbv.alx, wdbviewer.alx and autosyncrunner.alx** files on your BlackBerry.

Use **Application Loader** available with your BlackBerry Desktop Manager to install **Comm_rdbv.alx, wdbviewer.alx and autosyncrunner.alx** files to your BlackBerry device.

Now you are ready to use BlackBerry Wireless DBViewer software.

2.2.2 Over The Air (OTA) Installation

If you do not want to connect your BlackBerry to PC using USB Cable, then use OTA version. In this installation process, please use following link in your BlackBerry Browser.

<http://www.cellica.com/ota/bbwdbv.asp>

This page will show 3 links.

[Comm_rdbv](#)

[wdbviewer](#)

[autosyncrunner](#)

Download all three files on your BlackBerry. Now you are ready to use BlackBerry Wireless DBViewer.

Note: Your Desktop side Wireless DBViewer application must be logged in and connected to the Internet to get data on the BlackBerry.

3 USING THE WIRELESS DATABASE VIEWER ON THE DESKTOP

This section will explain how to use BlackBerry Wireless Database Viewer desktop software.

Run BlackBerry Wireless DBViewer from the shortcut available on the desktop, or use Start Menu: **Start->Programs->Wireless Database Viewer->Wireless Database Viewer**.

You will get the following screen.

3.1 Application Login

1. You can start the desktop component by clicking shortcut available on desktop or use Start Menu: **Start->Programs->Wireless Database Viewer->Wireless Database View**
2. Once application gets started, you will get following Login screen, here enter the password you had entered while installing the software.

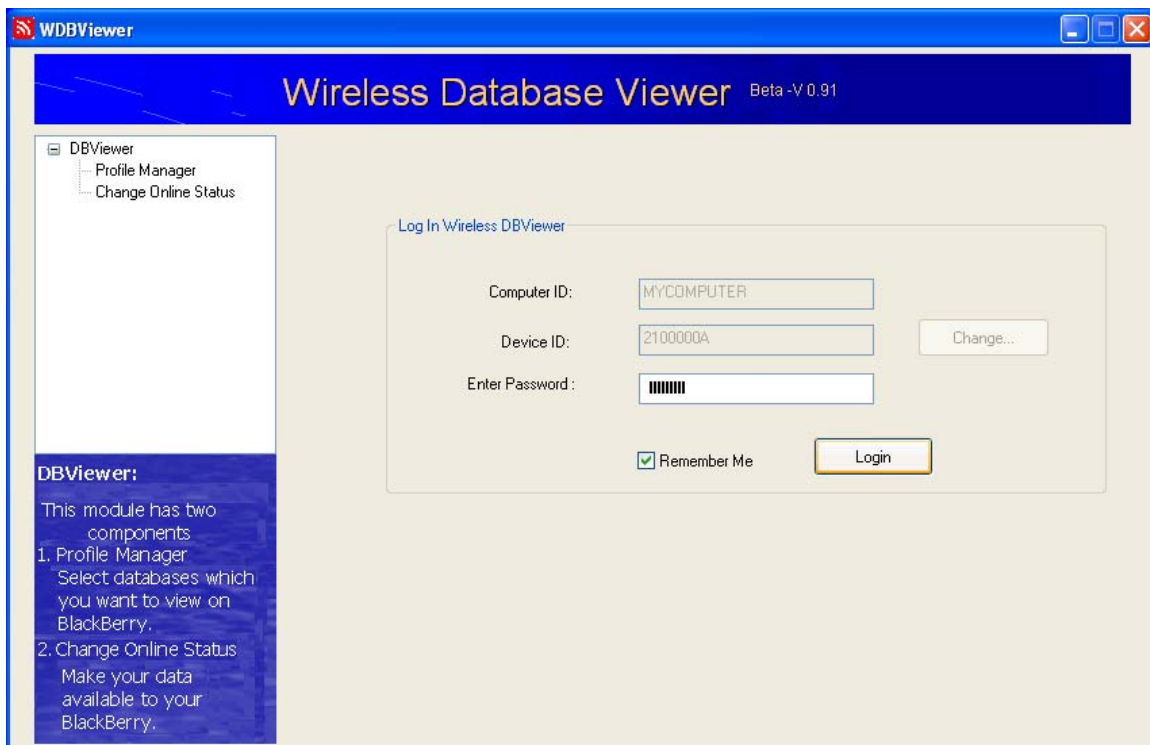


Figure 7: Database Viewer Login

3. Once you logged in the application, you will able to create database list using Profile Manager option available on left side. Following screen shows the sample profile list.

3.1.1 Profile Manager

Once you logged in the application, you will able to create database list using Profile Manager option available on the left side. Following screen shows the sample profile list.

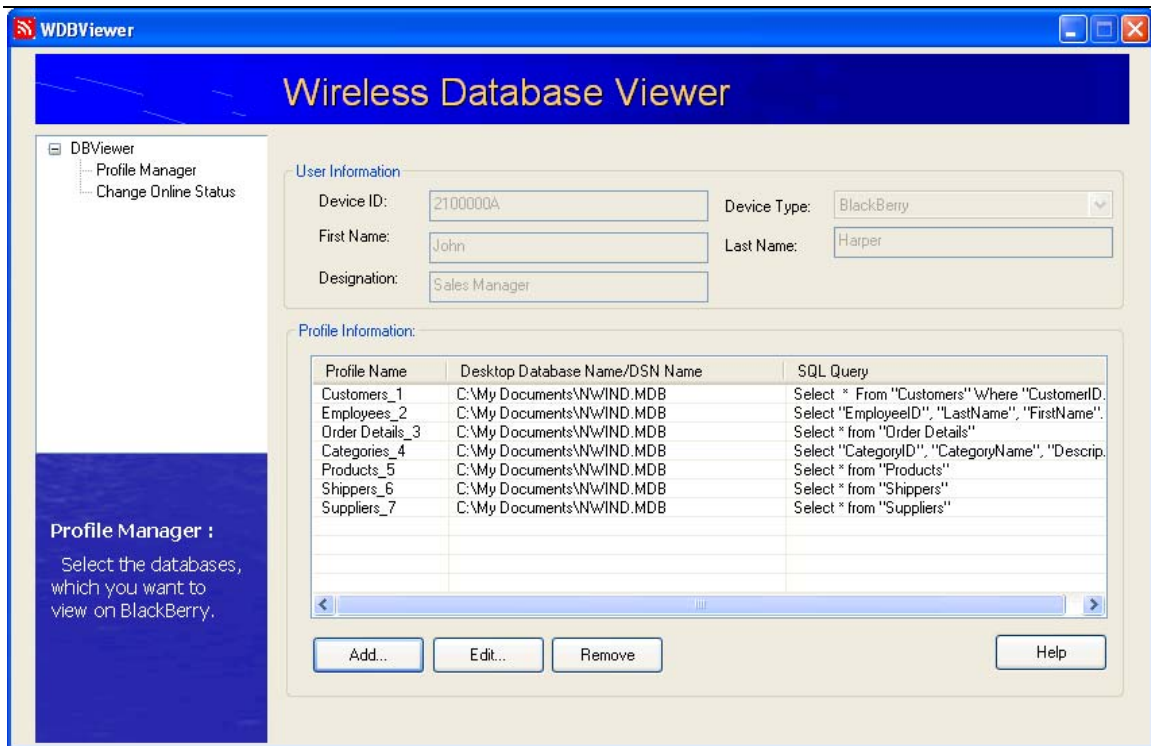


Figure 8: Profile Manager

3.2 Add Profile

Use Add button available on above screen (Figure 8: Profile Manager) to add database to Profile Manager.

Now you will get the screen, as shown in Figure 9: File based Database Selection , which allows you to create profile for both file and DSN based databases.

3.2.1 File based Database Selection

1. By default, you will get the screen below with File based Database option selected.

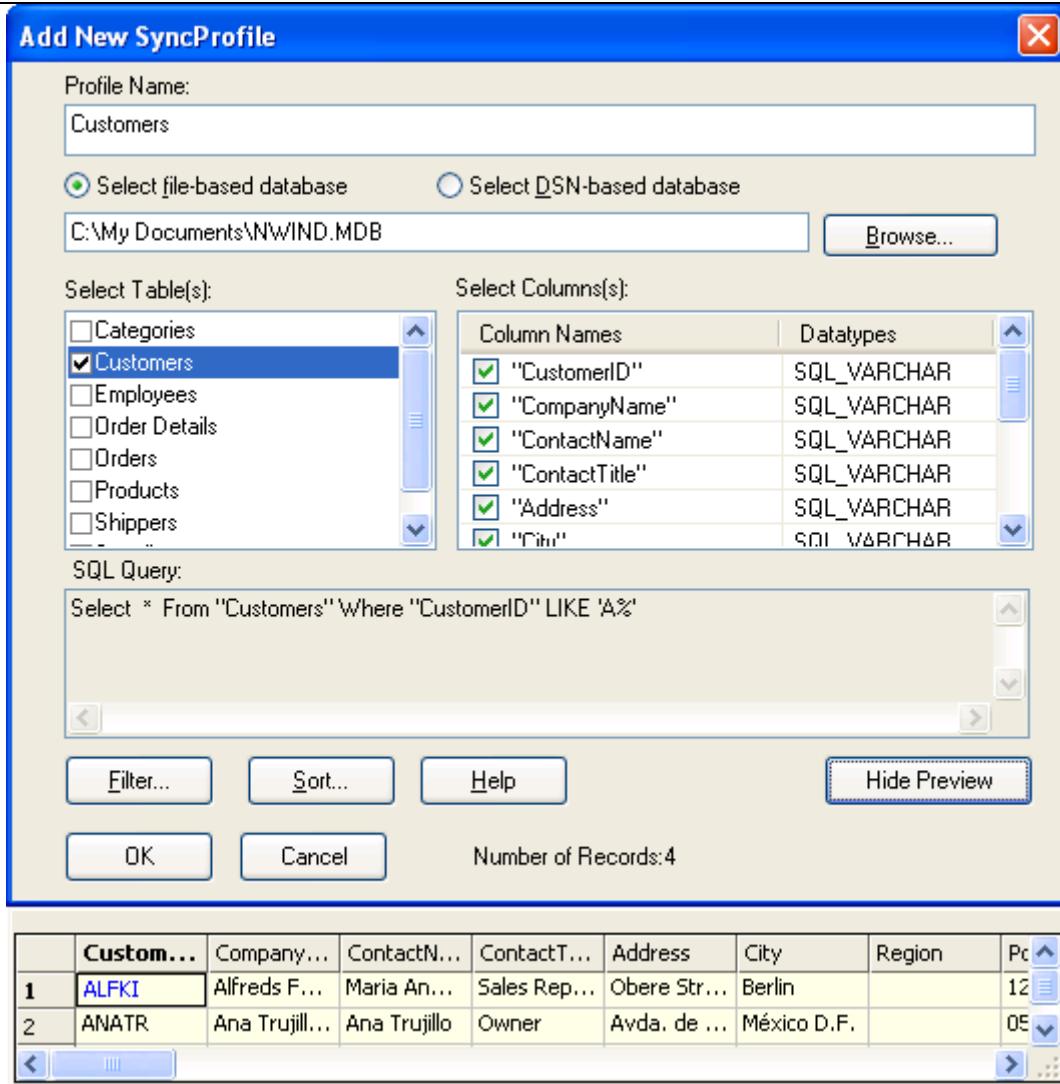


Figure 9: File based Database Selection

2. Click on **Browse** button to select file of type: **MS Access, Excel, FoxPro, dBase** or, click on **Browse** button. You will see the screen as follows.

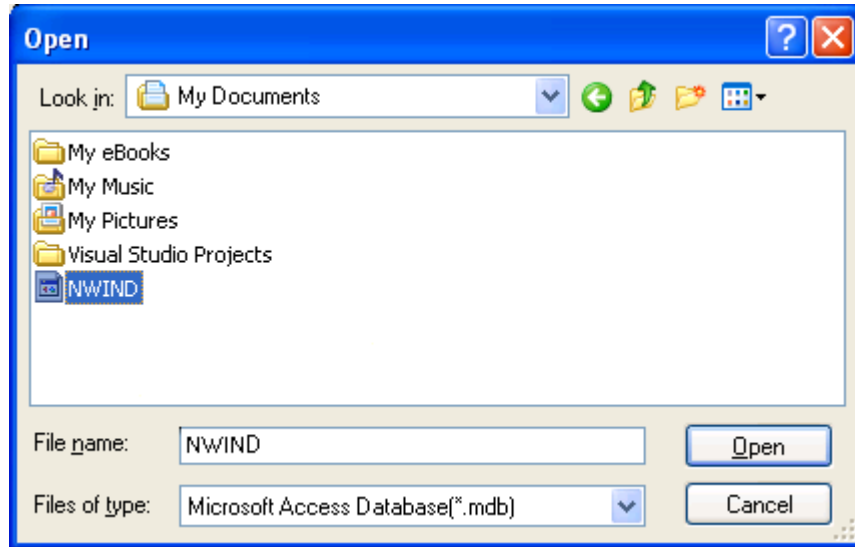


Figure 10: Database Selection

4. Select Files of type such as Microsoft Access Database(*.mdb), Excel Files(*.xls), or Foxpro/dbase Database(*.dbf) files and then select File name of your choice, for example *NWIND.mdb*, and click **Open**.
5. When you select an Excel file using Browse button, you will get a dialog prompt as:

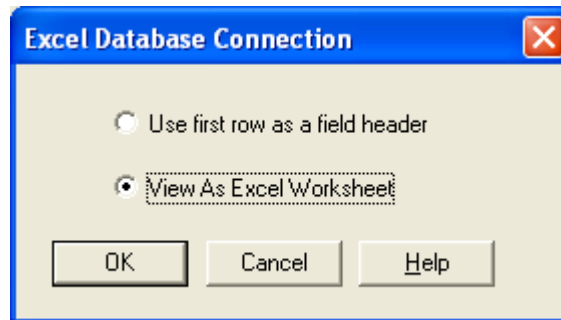


Figure 11: Select Excel View Dialog

Here, when you select "View As Excel Worksheet", contents will be shown similar to that of Excel Worksheet. Where as, when you select "View as ODBC Database", it will be treated as a database. In this case customized SQL queries will work on your Spreadsheet. To manually apply filters and sort orders click on "**Filters**" and "**Sort Order**" buttons.

3.2.2 DSN based Database

1. Click on popup provided to select database via Database Source (DSN) such as **Oracle, MySQL, SQL Server**. You will see list of available Database Source Name.

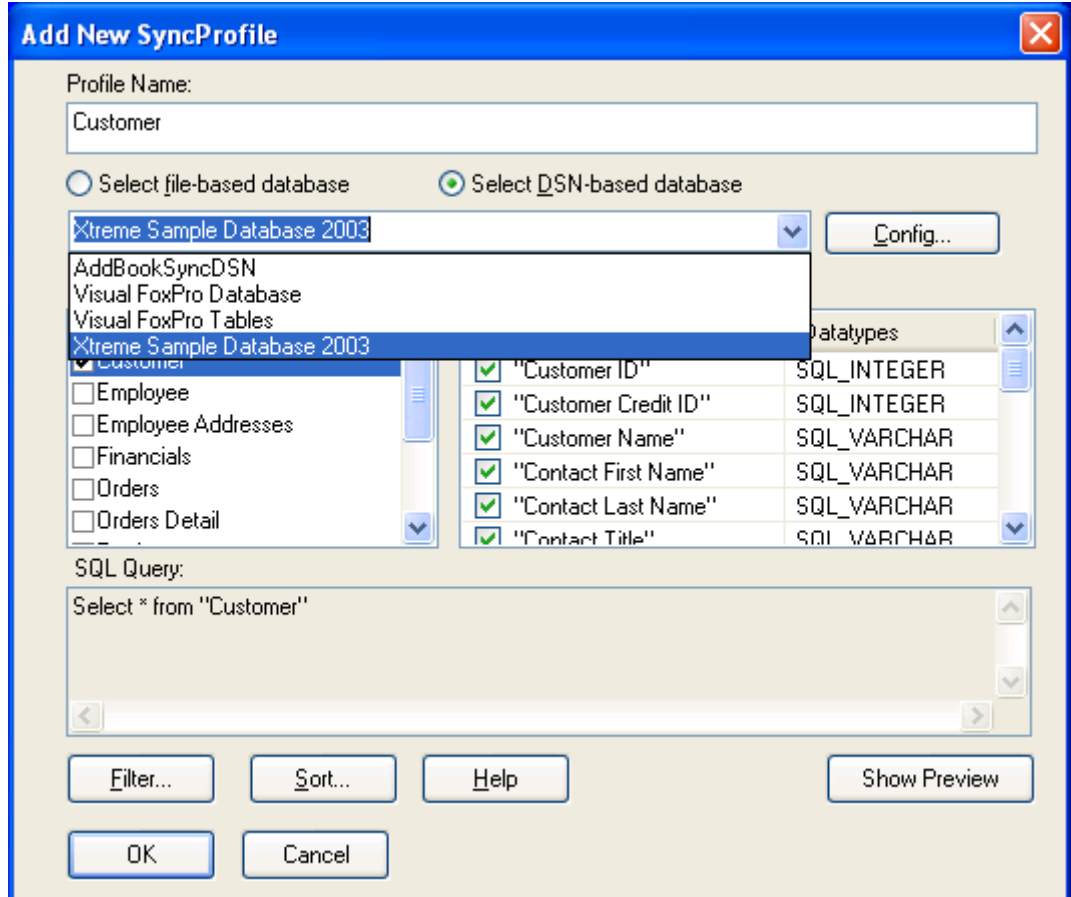


Figure 12: Build Query Dialog

2. You can manage DSN via ODBC Data Source Manager in Windows Control Panel.

3.2.3 Applying Filters

In the above dialog box, click on "**Filters**" button, you will see the following filter dialog:

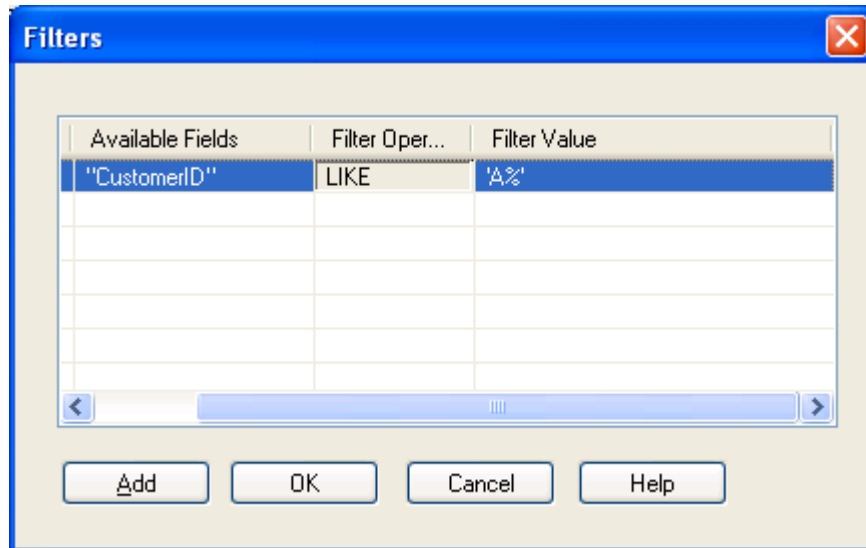


Figure 13: Apply Filter

Here, you can apply as many filters as you want. Initially, one filter is shown, by default. Click on "**Add**" button to have more filters. Select check marks to those filters you want, select field from "**Available Fields**" popup (Double click to get the popup), select operator from "**Filter Operator**" popup and click on "**Filter Value**" edit box and enter value, which you want as a filter condition value.

When you double click on particular cell to change the filter value, you will get following screen which will allow to set any value or Database Column.

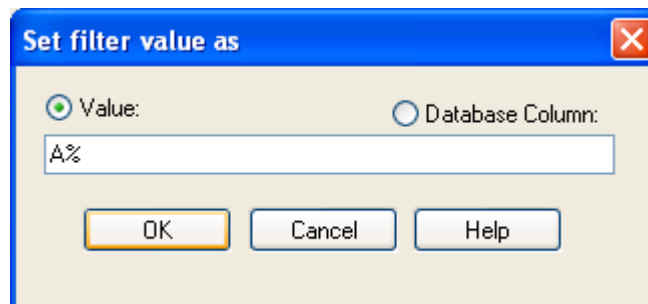


Figure 14: Filter type

In the above dialog, click on the "**Sort Order**" button, you will see the following sort order Dialog, as follows:

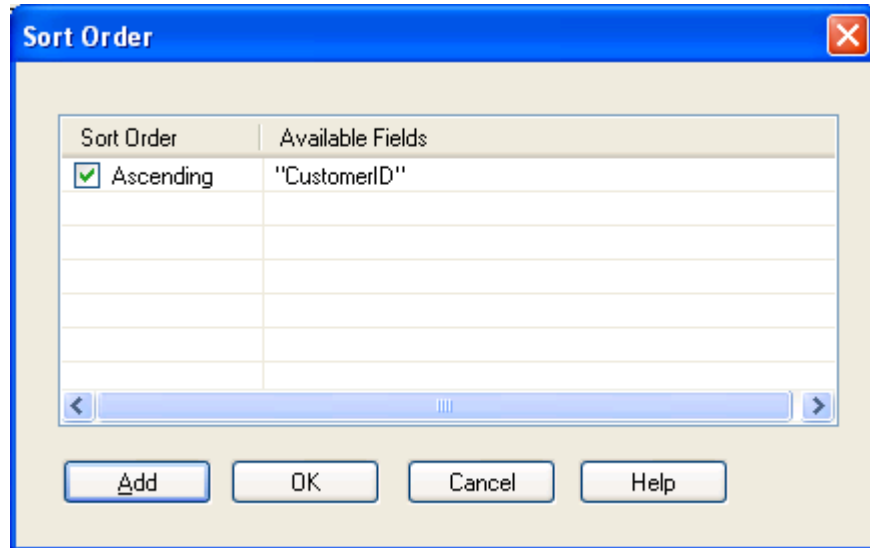


Figure 15: Apply Sort Order

Select check mark for those you want to apply sort order. Select sort order as "**Ascending**" or "**Descending**", select field from "**Available Fields**" popup. To add more filters, simply click on "**Add**" button.

3.3 Edit profile

By using Edit button available in "Profile Manager", you can edit the selected profile. You can change the selected table or change filter value and Sort by using this option.

3.4 Remove Profile

You can delete the selected profile by using the "Remove" button available on this Profile Manager.

3.5 Change Online Status

This module makes profile databases available to your BlackBerry. When you click on "Change Online Status" link in left pane you will get following screen. Use "Sign In" button available on this dialog box to make your database available to your BlackBerry. You must sign in to work wirelessly.

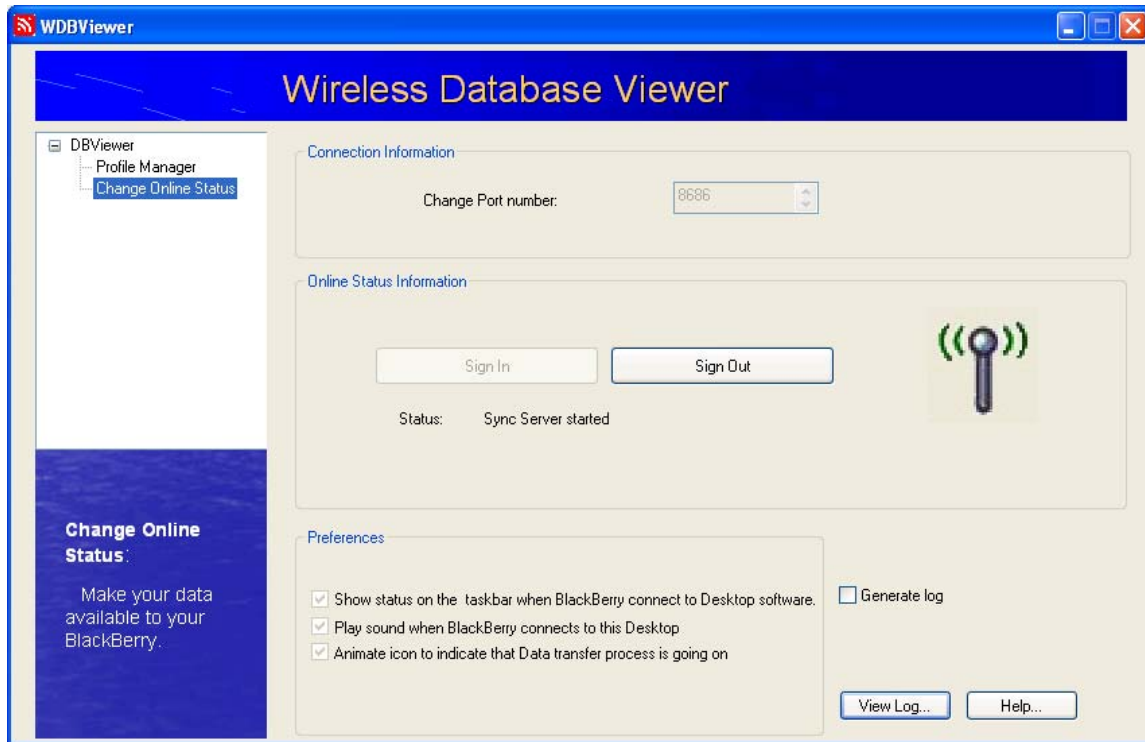


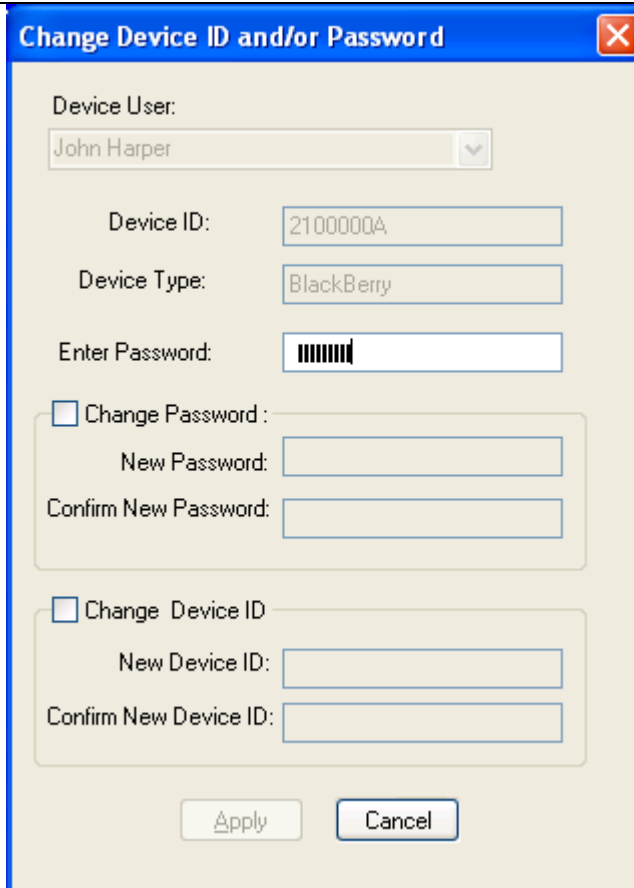
Figure 16: Change Online Status

If you get disconnected from Internet, please use “Sign in” button to make your data again available to BlackBerry.

Here you can set various Preferences according to your need.

3.6 Change Device ID and Password:

If you changed your BlackBerry device then to use Wireless DBViewer on new device change the Device ID (PIN) in the software from the or you want to change the password then press “Change” button available on Login dialog form (Figure 1).



Change Device ID and/or Password

Device User: John Harper

Device ID: 2100000A

Device Type: BlackBerry

Enter Password: [masked]

Change Password :

New Password: [text box]

Confirm New Password: [text box]

Change Device ID :

New Device ID: [text box]

Confirm New Device ID: [text box]

Apply Cancel

Figure 17: Change PIN and Password

4 USING THE WIRELESSDBVIEWER ON THE BLACKBERRY

Now we will see, how to get and view the desktop database in BlackBerry Wireless DBViewer .

After successful installation of "BlackBerry DBViewer, on your BlackBerry Select Application ->Wireless Database Viewer icon and click on it, you will get following login screen. Here enter the proper information. You must enter exact information that you had entered in Desktop side application.



Wireless Database Viewer

User Login

PIN: 2100000A

Computer ID:
MYCOMPUTER

Password: *****

Confirm Password:

OK Cancel Help

*P.S. Check APN and TLS settings.

Enter login information.

Figure 18: BlackBerry Login Form

When you select OK button, after verification of your information, you will allowed entering in to application. You will get following screen after your first log in. If you have created profile in Desktop side application, use “Just Now” button to fetch them to your BlackBerry. If you select “Try Later” button then you need to fetch profile list manually by using “Fetch Profile(s)” menu.



Figure 19: Profile Fetching at Startup

When you use “Just now” or “Fetch Profile(s)” from menu, then the profile list you have created on Desktop side software will be get on your BlackBerry.

Once you list get fetched from desktop, it will look like as follows.

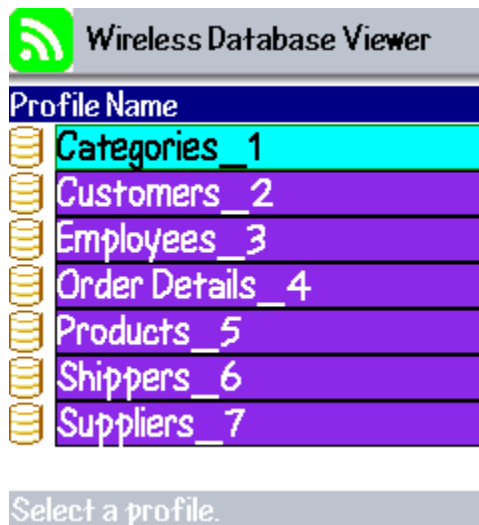


Figure 20: Fetched Profiles

Once you get the list, from the menu you need to fetch the data by using “Sync again” submenu from the main menu.

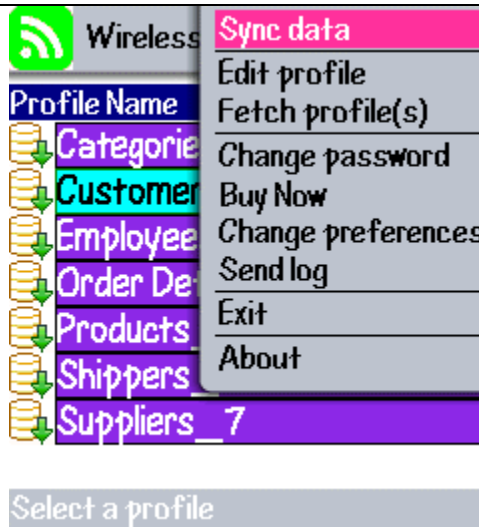


Figure 21: Sync Data Menu

When you use “**Sync data**”, you select data get fetched like this. It will display total number of available records and current number of records fetched also it display the number of byte transfer.

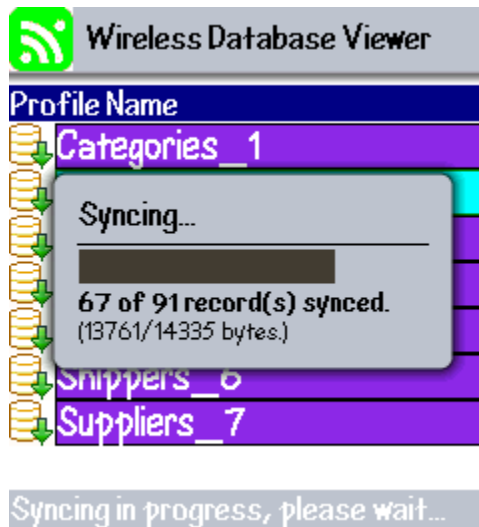


Figure 22: Syncing data

Use “View data” submenu to view your selected database.

The database contents can be view in two modes: Grid and Record.

In Grid View, you will able to view database contents in Column view form. This has lots of features.

Customers_2: (91)					Customers_2 << < > >>	
	CustomerID	CompanyNa	ContactNa	ContactTi	Address	City
1	ALFKI	Alfreds	Maria An	Sa		
2	ANATR	Ana Truji	Ana Truji	O		
3	ANTON	Antonio	Antonio	O		
4	AROUT	Around t	Thomas	Sa		
5	BERGS	Berglund	Christina	Or		
6	BLAUS	Blauer S	Hanna Mo	Sa		
7	BLONP	Blondel p	Frédériq	Ma		
8	BOLID	Bólido Co	Martín S	O		
9	BONAP	Bon app'	Laurence	O		

CustomerID	ALFKI
CompanyNa	Alfreds Futter
ContactNa	Maria Anders
ContactTi	Sales Represen
Address	Obere Str. 57
City	Berlin
Region	
PostalCode	12209
Country	Germany
Phone	030-0074321
Fax	030-0076545
1/91	

Customers_2: View details					Customers View details	
	CustomerID	CompanyNa	ContactNa	ContactTi	Address	City
1	ALFKI	A				
2	ANATR	A				
3	ANTON	A				
4	AROUT	Around t	Thomas	Sa		
5	BERGS	Berglund	Christina	Or		
6	BLAUS	Blauer S	Hanna Mo	Sa		
7	BLONP	Blondel p	Frédériq	Ma		
8	BOLID	Bólido Co	Martín S	O		
9	BONAP	Bon app'	Laurence	O		

CustomerID	ALFKI
CompanyNa	Alfreds Futter
ContactNa	Maria Anders
ContactTi	Sales Represen
Address	Obere Str. 57
City	Berlin
Region	
PostalCode	12209
Country	Germany
Phone	030-0074321
Fax	030-0076545
1/91	

Figure 23: Grid View and Record View

There are various useful menu options on this screen:

- Detail View You can see the full contents of the selected field in the Detail View screen. You can use 'A' key as a shortcut key for this menu.
- Find & Find Next: are discussed in the next topic entitled as Search Contents.
- Goto Record: After selecting this menu option, it will show you the dialog that allows you to enter the record number where you want to jump. This results into jumping to the specified record number.
- Record View: You can shift the Single Record view. You can use ALT+Enter key for this.

- Call xxx: You can even make a phone call for the presently selected field's numeric contents, which will be treated as phone number.

Find and Find Next:

To search a particular string within the selected database, you can use "Find" and "Find Next" menu options available in both "Grid" and "Single Record" view.

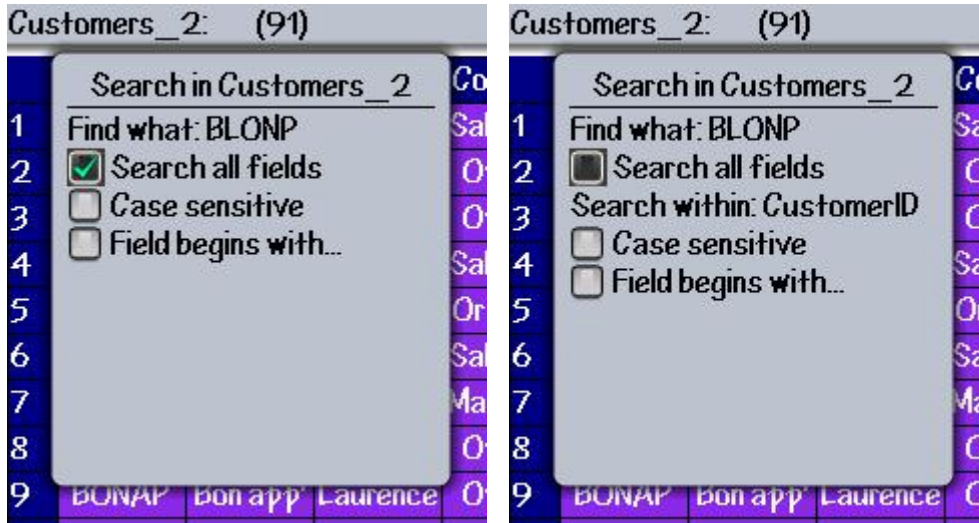


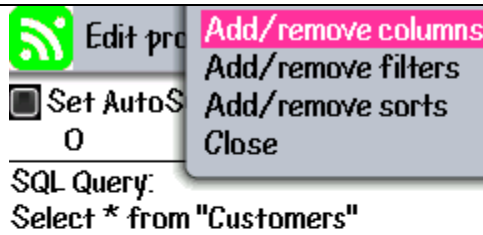
Figure 24: Search within single Field

You can search in single column also, you need to enable “Search all fields” option on “Find” form then select the required field from the available list of fields.

Fetch Filtered and Sorted Data:

You can fetch the data according to your need by selecting specific columns or by implementing Filter and sort. You need to choose the Edit profile option for it.

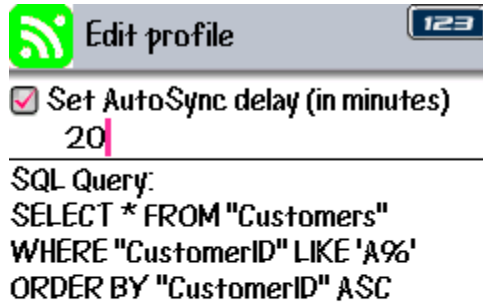
Here you can set any specific profile for automatic update after mentioned time.



Selected profile: Customers_2

Figure 25: Edit Profile and Autosync option

When you choose “Edit profile” option, you will get following screen. Here you can mention time period for autoupdate option. This option can be implement to only one profile. You database will be automated update according to time you mentioned here.



Selected profile: Customers_2

Figure 26: Autosync Profile

When you are on the edit profile option (Figure 16), from menu you can get “Select Column” menu that allows you to select columns that data you want to fetch.

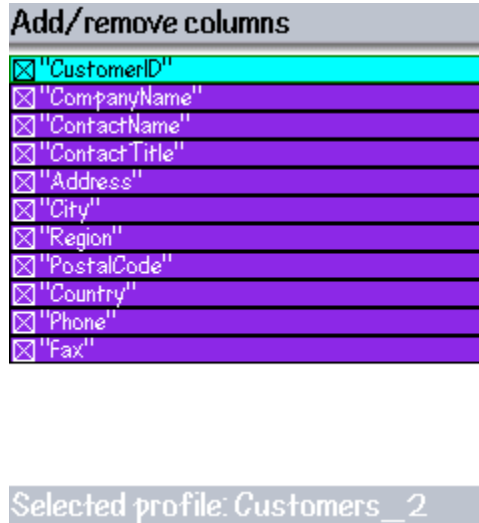


Figure 27: Select Column

For selected profile you can implement Filter from menu available on “Edit Profile” form (Figure 16). Use Trackwheel to change the Field name. As for the condition and value, you can set Filter value as Arbitrary value or Database Column.

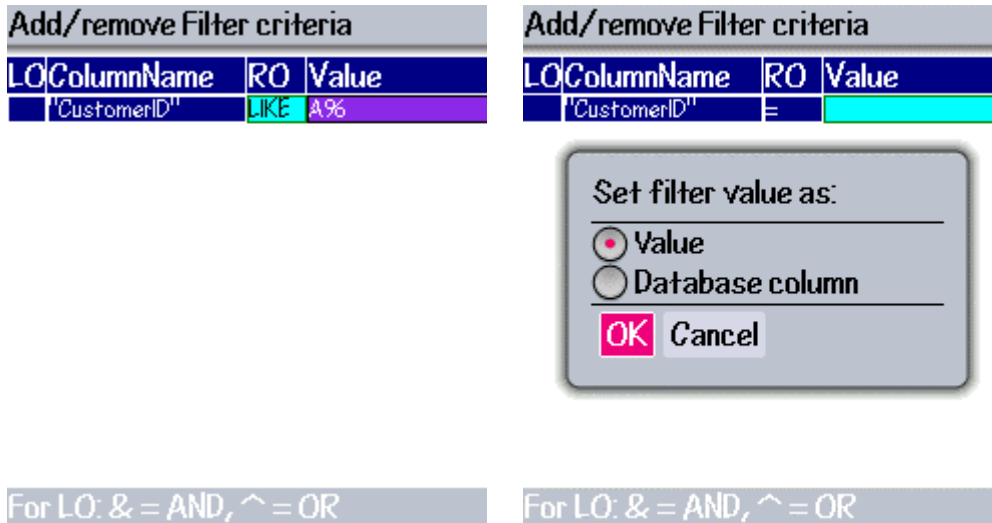


Figure 28: Apply Filter

Similarly you can implement sort on selected profile.

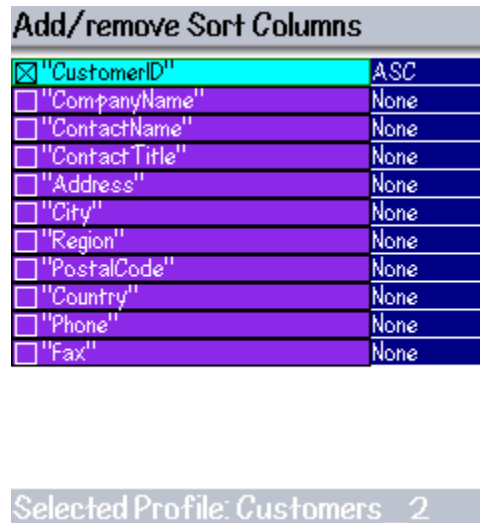


Figure 29: Apply Sort

Similarly for the selected profile you can implement Sort. After implementing Everything you need to fetch the data but before fetching data according to this update profile, change the settings from preferences. Please change “SQL Priority “ option from “Desktop” to “Device”. This will fetch your desktop data according to query available on BlackBerry.

Preferences:

In “Preferences” form you can change default settings of application like default view of your database, Date and Time formats, Decimal spaces.

User Preferences

Record View: All At Once
 Date Format: YYYY.MM.DD
 Time Format: HH:MM:SS
 Decimal Places: 2
 Grid Column Width: 11
 SQL Priority: Desktop
 Prompt to fetch updated p: Device
 Yes
 Log Entry: No

Change default settings

Figure 30: Preferences

Various Icon indications:










ICON	Profile Status	SQL Query Priority	AutoSync
	Empty	Desktop	No
	Synced	Desktop	No
	Empty	Desktop	Yes
	Synced	Desktop	Yes
	Empty	Device	No
	Synced	Device	No
	Empty	Device	Yes
	Synced	Device	Yes
	Empty, This profile has been deleted from desktop side.		

Figure 31: Various icons

5 BLACKBERRY KEYPAD SHORTCUTS

5.1 Screen : Homescreen	
Keystroke	Action Taken
Enter	Open the selected database.
Delete	Prompt to Delete the selected database.
ALT+P	Jump to Preference screen.
5.2 Screen : Grid Screen and Record View Screen	
Keystroke	Action Taken
ALT+Delete	Erase selected cell contents.
SHIFT+Delete	Cut selected cell contents.
ALT+Click	Copy selected cell contents.
SHIFT+Click	Paste selected cell contents.
ALT+Z	Undo last operation (Cut, Paste or Edit).
Enter	Edit selected cell contents.
ALT+Enter	Jump to other view screen. (i.e. GridScreen to RecordViewScreen and vice-a-versa.)
Escape	Close view screen.
ALT+D	Jump to Detail view screen.
ALT+P	Jump to Preference screen.
ALT+G	Pop up Goto dialog.
1	Move to First record .
3	Move to Previous record .
9	Move to Next record .
7	Move to Last record .
4	Move to First column .
6	Move to Last column .
ALT+S	Pop up Search dialog.
>> (Next)	Search Next item.
A	Append new record .

Delete	Prompt to Delete selected record.
5.3 Screen : Detail View Screen	
Keystroke	Action Taken
ALT+S	Pop up Search dialog.
>> (Next)	Search Next item.
ALT+P	Jump to Preference screen.

6 FREQUENTLY ASKED QUESTIONS

Frequently Asked Questions (FAQ) are questions that our customers routinely ask us or email about. We divided FAQs in two different sections.

(For more queries, refer product documentation and tips.)

6.1 BlackBerry

1. **I am having problem installing BlackBerry component of Database Viewer software. I have downloaded theWireLessDBViewer.exe for installation. After that, I've run the Application Loader of BlackBerry Desktop Manager. But WirelessDBViewer will not install on the BlackBerry device. What should I do to install it?**

First, run the downloaded setup file & install the application at the suitable location on local hard disk. Now, run the Desktop Manager (note that, it should be **BlackBerry Desktop Manager 4.0**), & follow the on-screen instructions. Specify the path at which you have already installed the BlackBerry Wireless Database Viewer this path there is folder **BlackBerry Installation Files**, as the response to the **Add...** button. Select the **Comm_rdbv.alx**, **wdbviewer.alx** and **autosyncrunner.alx** files. Once again follow the rest of the on-screen instructions.

2. **I could not see the entire contents of the selected field. What can I do?**

In Grid View, you can change the Column Width, by changing the **Grid Column Width** option in **Preferences**, to see more contents of the selected field. However, in order to view the entire contents for the selected field, you can select the **Detail View** menu option from either Record View or Grid View screen.

7 SOFTWARE SUBSCRIPTION

Subscribe From Website: If you would have subscribed the software from our website at www.cellica.com, you will get registration key at the end of the subscription process, use it at **Registration key** field and use “Subscribe” menu. Your software will get subscribed.

Subscribe Wireless DBViewer

To purchase a subscription to this product, please return to the website where you got this free trial.

*Optional. Enter your registration key to activate your subscription. Leave this field empty for trial mode or if your account is already activated.

Registration Key:

8 SUPPORTED DATA TYPES

- Currently BlackBerry Wireless Database Viewer supports following data types.
- Memo, Char, VarChar, VarChar2
- Number of type: Byte, Decimal, Integer, Long Integer, Single, Real, Float, Double
- GUID
- Date/Time
- AutoNumber of type: Long Integer
- Yes/No
- Hyperlink
- Currency

9 SYSTEM REQUIREMENT

Desktop: Windows 2000 or Windows XP with Service Pack 2.

BlackBerry: BlackBerry OS 3.8 or above.

Also for Windows 2000/ Windows XP set following setting according to your computer Operating system.

Windows 2000

Select "Dial up Connection" then "security" Please disable Check mark

"Don't allow external application to access My Computer".

For Windows XP

From Control Panel ->Windows Firewall->General->

Please uncheck "Don't allow exceptions".

10 CONTACT US

You can use the following email addresses to contact us:

- Product support
support@cellica.com
- Sales inquiries
sales@cellica.com
- Custom Software
customsoftware@cellica.com