

PALM WIRELESS DATABASE VIEWER USER GUIDE

PRODUCT VERSION: 1.0



CONTENTS

1	INTRODUCTION	3
1.1	FEATURES	3
2	INSTALLATION	4
2.1	DESKTOP INSTALLATION.....	4
2.2	PALM INSTALLATION:	9
2.2.1	<i>Manual Installation</i>	10
2.2.2	<i>Over The Air (OTA) Installation</i>	10
3	USING THE WIRELESS DATABASE VIEWER ON THE DESKTOP	11
3.1	APPLICATION LOGIN	11
3.1.1	<i>Profile Manager</i>	11
3.2	ADD PROFILE	12
3.2.1	<i>File based Database Selection</i>	12
3.2.2	<i>DSN based Database</i>	15
3.2.3	<i>Applying Filters</i>	16
3.3	EDIT PROFILE	17
3.4	REMOVE PROFILE.....	17
3.5	CHANGE ONLINE STATUS	17
3.6	CHANGE DEVICE ID AND PASSWORD:	18
4	USING THE WIRELESSDBVIEWER ON THE PALM	20
4.1	FETCH PROFILES:	20
4.2	SYNC DATA:	21
4.3	OPEN DATABASE	22
4.4	FIND AND FIND NEXT:	23
4.5	FETCH FILTERED AND SORTED DATA:	24
4.6	CUSTOMIZATION.....	26
5	SUPPORTED DATA TYPES	28
6	SYSTEM REQUIREMENT	29
7	CONTACT US	30

LIST OF FIGURES

Figure 1: Installation Start	4
Figure 2: Installation Edition.....	5
Figure 3: Installation mode.....	6
Figure 4: Computer identification	7
Figure 5: Installation Information	8
Figure 6: Installation Path	9
Figure 7: Database Viewer Login.....	11
Figure 8: Profile Manager	12
Figure 9: File based Database Selection.....	13
Figure 10: Database Selection	14
Figure 11: Select Excel View Dialog	14
Figure 12: Build Query Dialog.....	15
Figure 13: Apply Filter.....	16
Figure 14: Filter type	16
Figure 15: Apply Sort Order	17
Figure 16: Change Online Status.....	18
Figure 17: Change PIN and Password.....	19
Figure 18: Palm Login Form	20
Figure 19: Fetched Profiles	21
Figure 20: Sync Data Menu.....	21
Figure 21: Syncing data.....	22
Figure 22: Grid View , Record View and Detail View	23
Figure 23: Search within single Field.....	23
Figure 24: Edit Profile option.....	24

1 INTRODUCTION

Being away from your office does not mean not having the access to your data. Consider the scenario when you want to carry a copy of the database on your Palm device. Now it is possible with the Palm Wireless Database Viewer.

Palm Wireless Database Viewer allows you to be more productive by allowing you to view the database contents on your Palm. Palm Wireless Database Viewer allows to sync with Microsoft Access, Microsoft Excel, and any ODBC Compliant database like Oracle, SQL Server, etc. The software package consists of two software: the Palm DBViewer Desktop that runs on Microsoft Windows, and Palm DBViewer that run on the Palm. You will use the desktop software to create the database profiles (make the list of database) and make this software online so that your Palm can connect to it. Palm DBViewer will Fetch this the profiles and data, and view the contents of the database.

In addition, you edit the queries on Palm and fetch data according to updated query.

1.1 Features

- Get any desktop data **Wirelessly** on your Palm.
- Sync updated desktop data at any time.
- Apply SQL Select queries, filters and Sort the fields and fetch data according to it.
- Supported Databases: MS Access, MS Excel, Oracle, SQL Server, FoxPro, dBase and any **ODBC Compliant Database**.
- Make a phone call for the selected field's numeric contents, which will be treated as a phone number.
- Find and Find again option to search a record.
- Easy navigation in both Record and Grid view using shortcut keys.

2 INSTALLATION

2.1 Desktop Installation

You should download **PalmWirelessDatabaseViewer.exe** file if you have not done it already.

Please make sure that your computer is connected to the Internet.

Double Click on this Setup file, this will show following screen. This screen checks Internet connection.

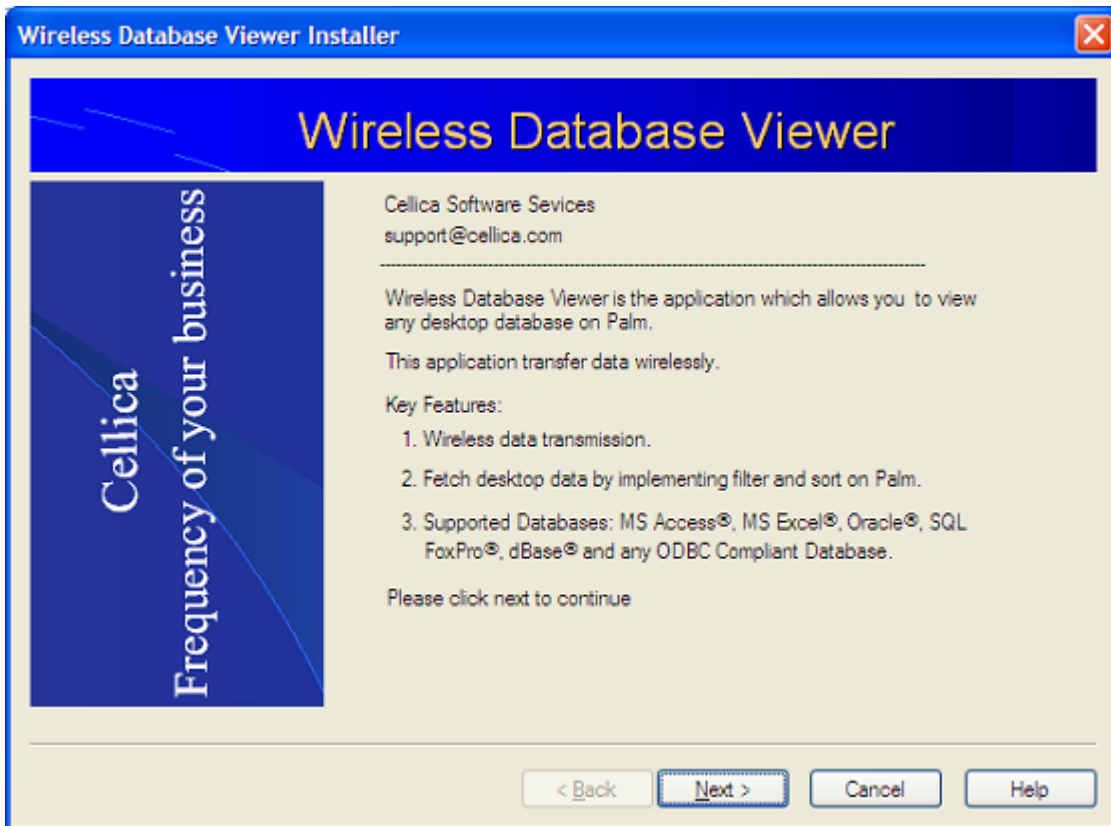


Figure 1: Installation Start

Now it will show following screen with default settings to Personal Edition..

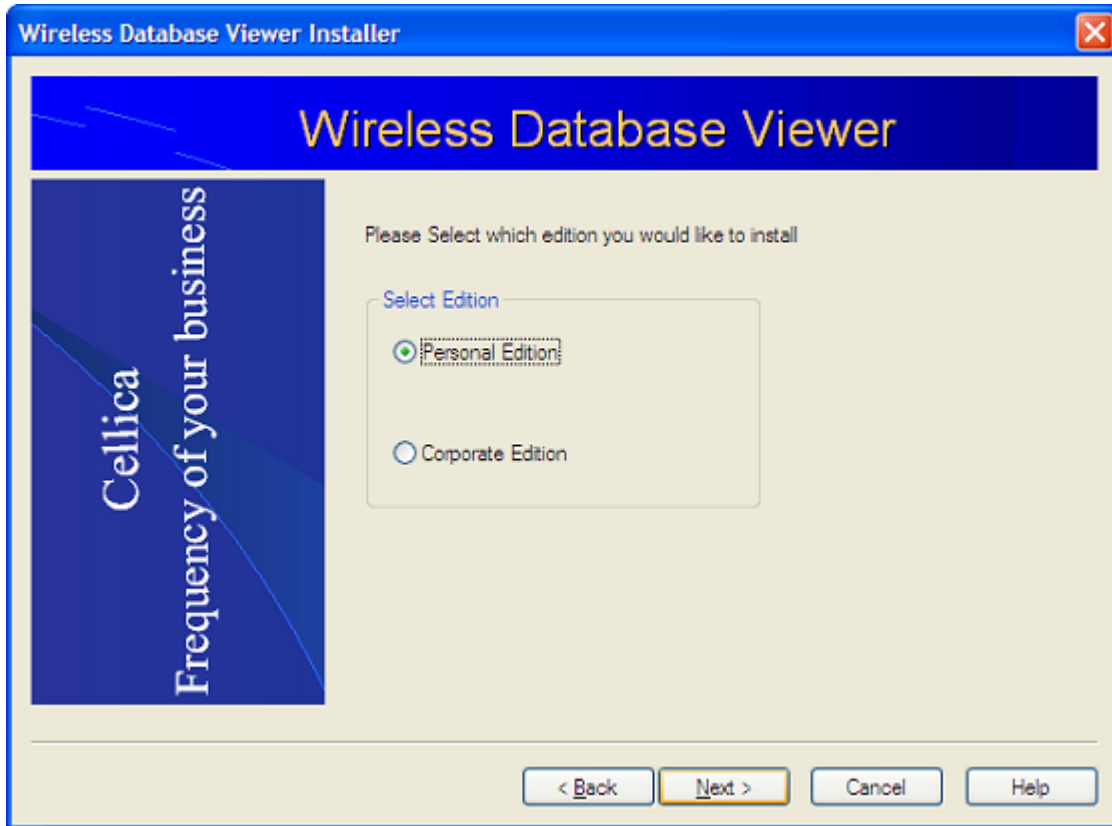


Figure 2: Installation Edition

Next Screen will show the “New Installation” and “Modify” option. If you are installing the software for the first time then select New Installation option.

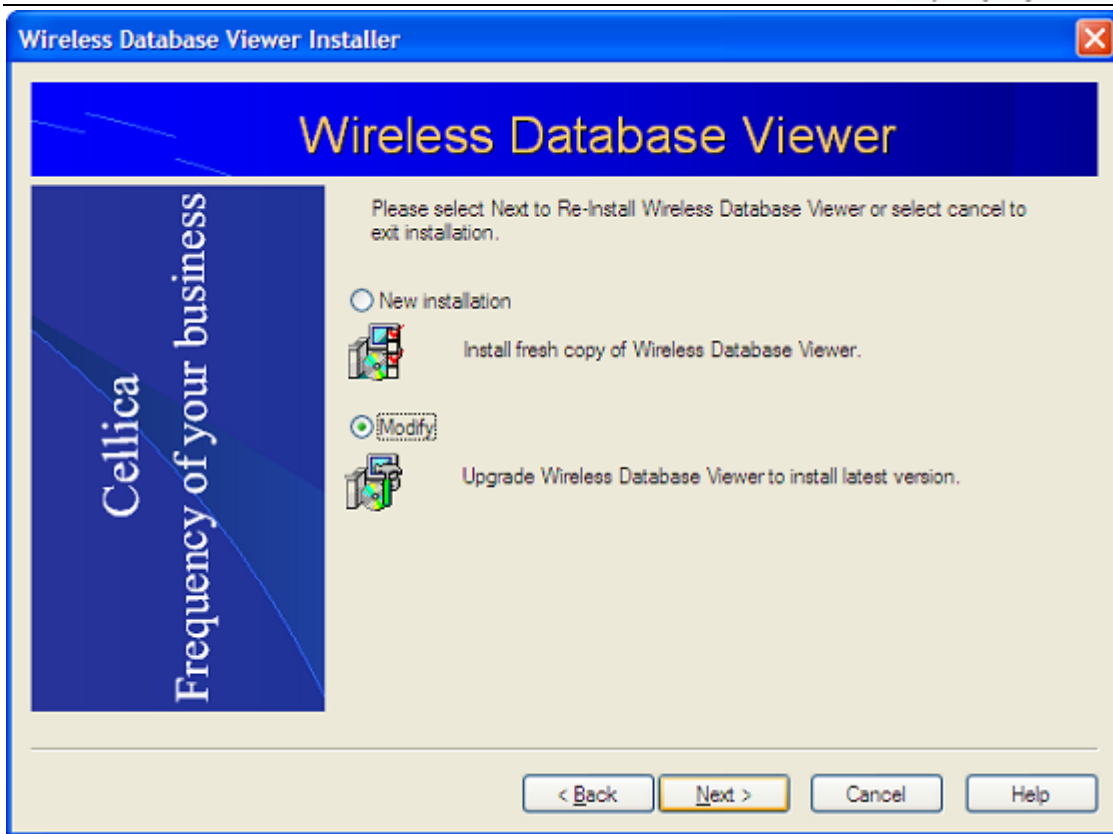


Figure 3: Installation mode

Now on the next screen you have to enter unique id of your computer. You can enter input up to 12 characters. Also enter the password which you need to use for login into the desktop component of Wireless DBViewer application.

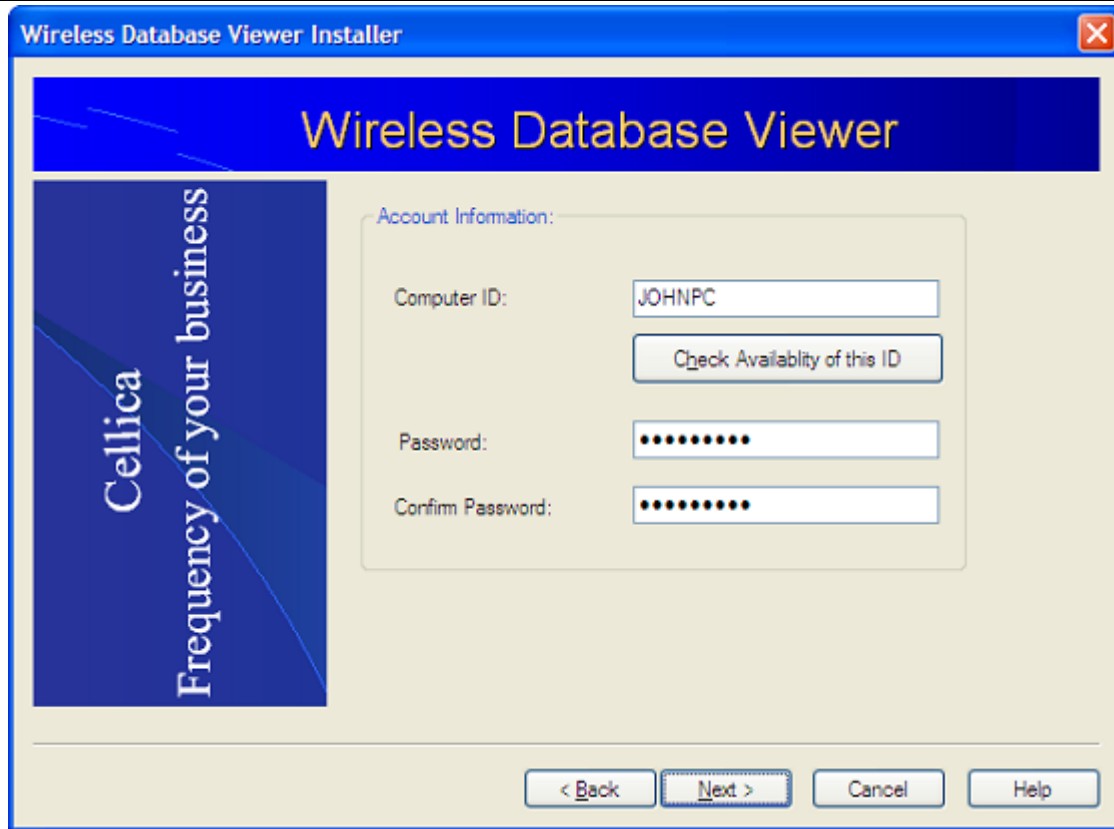
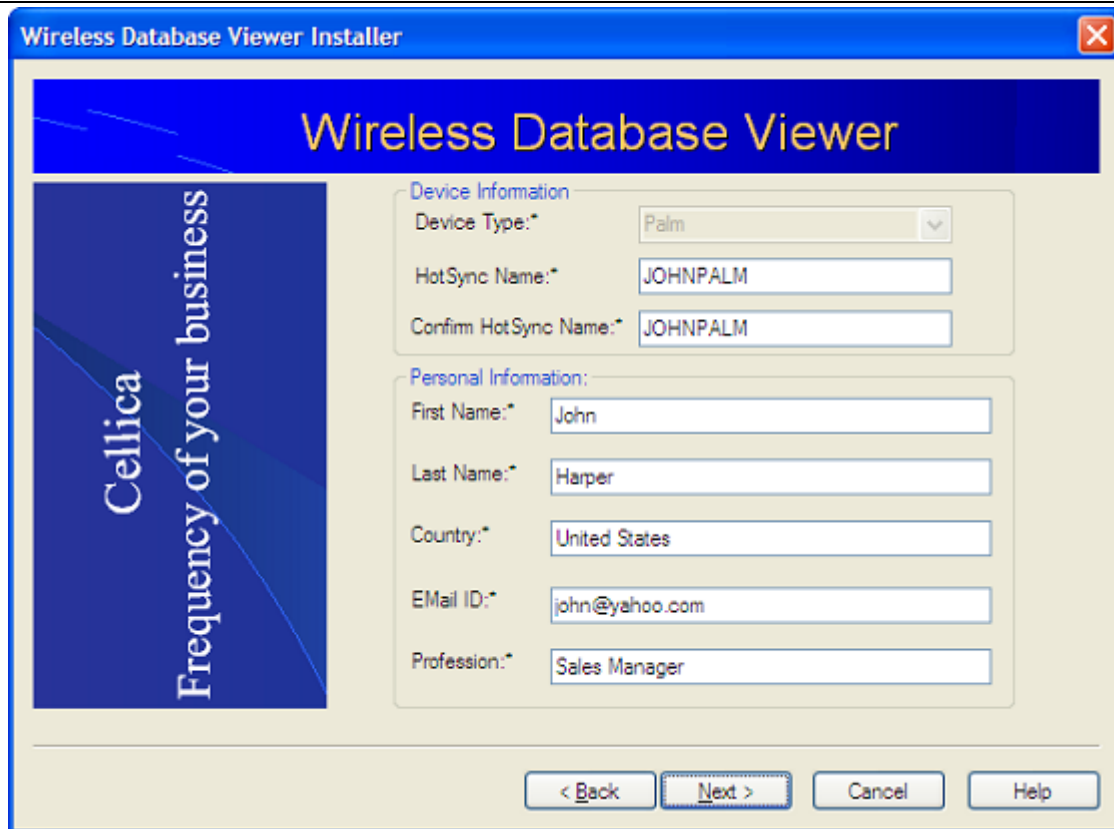


Figure 4: Computer identification

Now you need to enter HotSync ID of your Palm on which you want to view the data. Also enter your personal information.



Wireless Database Viewer Installer

Wireless Database Viewer

Device Information

Device Type:* Palm

HotSync Name:* JOHNPALM

Confirm HotSync Name:* JOHNPALM

Personal Information:

First Name:* John

Last Name:* Harper

Country:* United States

EMail ID:* john@yahoo.com

Profession:* Sales Manager

< Back Next > Cancel Help

Figure 5: Installation Information

On next screen, select the path where you want to install the software.

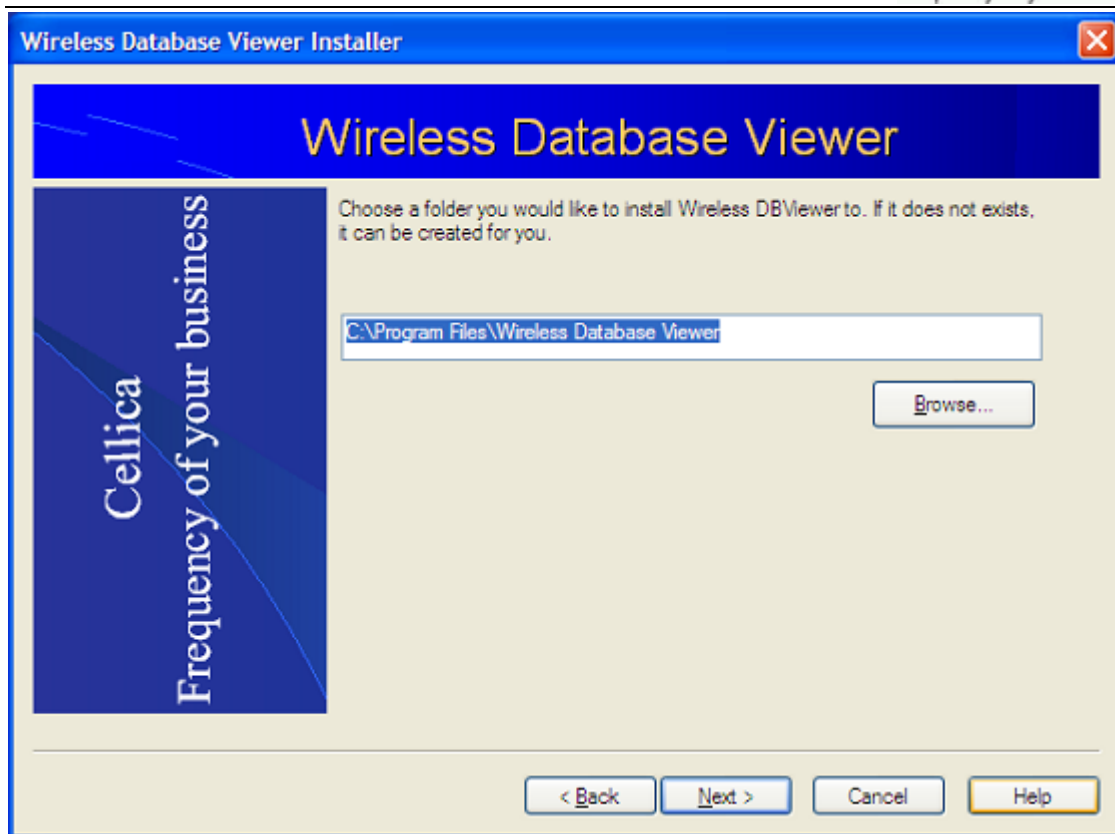


Figure 6: Installation Path

Wireless Database Viewer folder contains WDBViewer.exe and “**Palm Installation Files** “, This folder contains .prc file.

Shortcut for Desktop application **PalmWirelessDataBaseViewer.exe** and User Guide is available on your desktop.

2.2 Palm Installation:

You need to install WDBViewer.prc on your Palm.

There are two ways to install above applications on Palm.

1. Manual Installation.
2. Over the Air (OTA) installation.

2.2.1 Manual Installation

Wireless Database Viewer folder contains “Palm Installation Files” folder, this folder contains .prc file. You need to install **WDBViewer.prc** file on your Palm.

Use **HotSync Manager** available with your Palm Desktop Manager to install **WDBViewer.prc** files to your Palm device.

Now you are ready to use Palm Wireless DBViewer software.

2.2.2 Over The Air (OTA) Installation

If you do not want to connect your Palm to PC using USB Cable, then use OTA version. In this installation process, please use following link in your palm Browser.

<http://www.cellica.net/ota/palmwdbv.asp>

This page will show following link.

[Palm WDBViewer](#)

Download this file on your Palm. Now you are ready to use Palm Wireless DBViewer.

<p>Note: Your Desktop side Wireless DBViewer application must be logged in and connected to the Internet to get data on the Palm.</p>
--

3 USING THE WIRELESS DATABASE VIEWER ON THE DESKTOP

This section will explain how to use Palm Wireless Database Viewer desktop software.

Run Palm Wireless DBViewer from the shortcut available on the desktop, or use Start Menu: **Start->Programs->Wireless Database Viewer->Wireless Database Viewer.**

You will get the following screen.

3.1 Application Login

1. You can start the desktop component by clicking shortcut available on desktop or use Start Menu: **Start->Programs->Wireless Database Viewer->Wireless Database View**
2. Once application get started, you will get following Login screen, Here enter the password you had entered while installing the software.

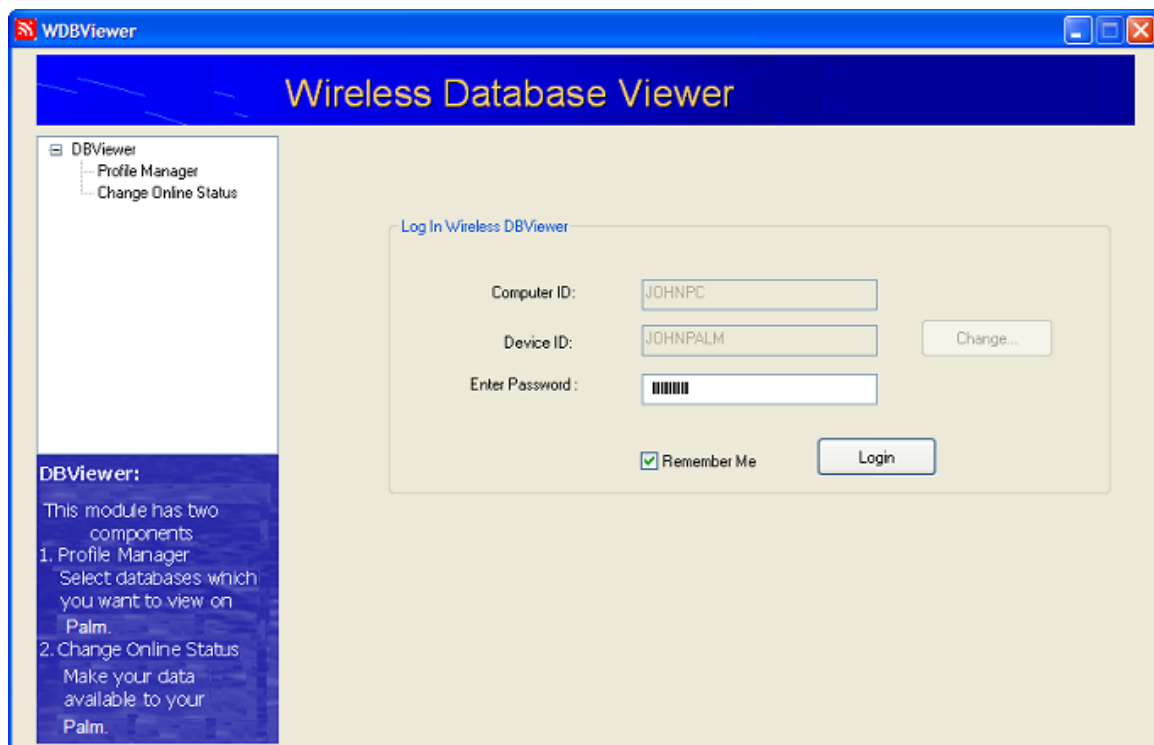


Figure 7: Database Viewer Login

3. Once you logged in the application, you will able to create database list using Profile Manager option available on left side. Following screen shows the sample profile list.

3.1.1 Profile Manager

Once you logged in the application, you will able to create database list using Profile Manager option available on the left side. Following screen shows the sample profile list.

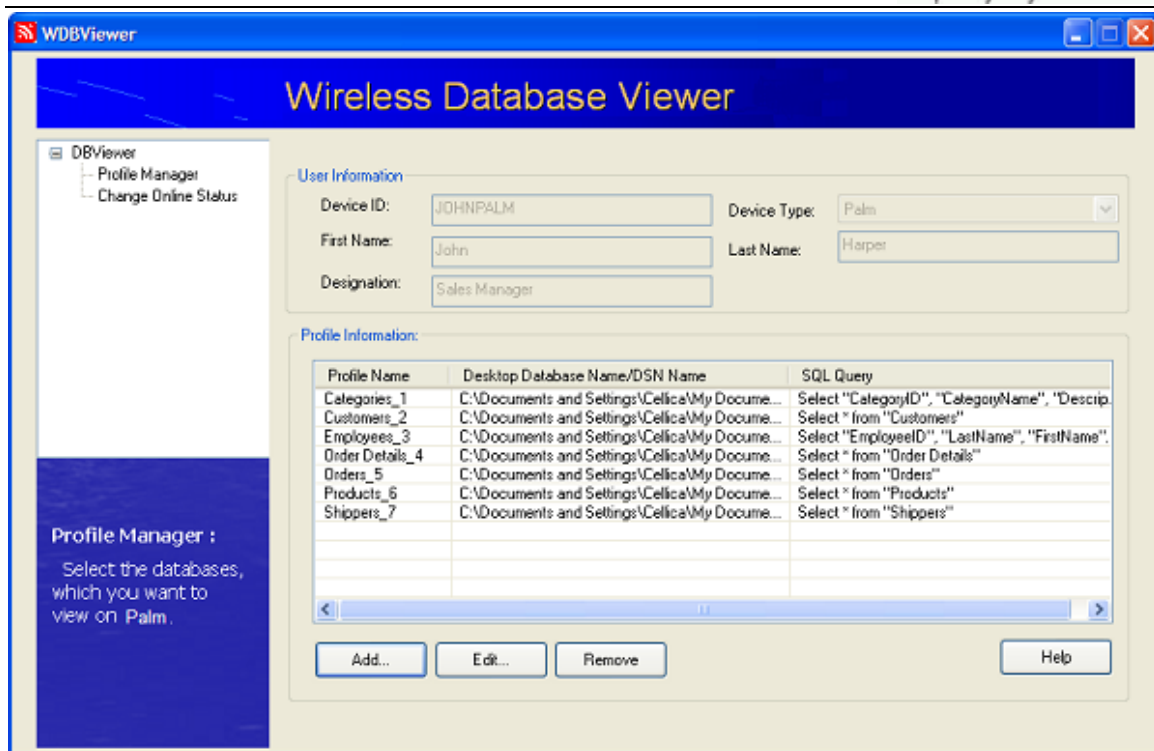


Figure 8: Profile Manager

3.2 Add Profile

Use Add button available on above screen (Figure 8: Profile Manager) to add database to Profile Manager.

Now you will get the screen, as shown in Figure 9: File based Database Selection , which allows you to create profile for both file and DSN based databases.

3.2.1 File based Database Selection

1. By default, you will get the screen below with File based Database option selected.

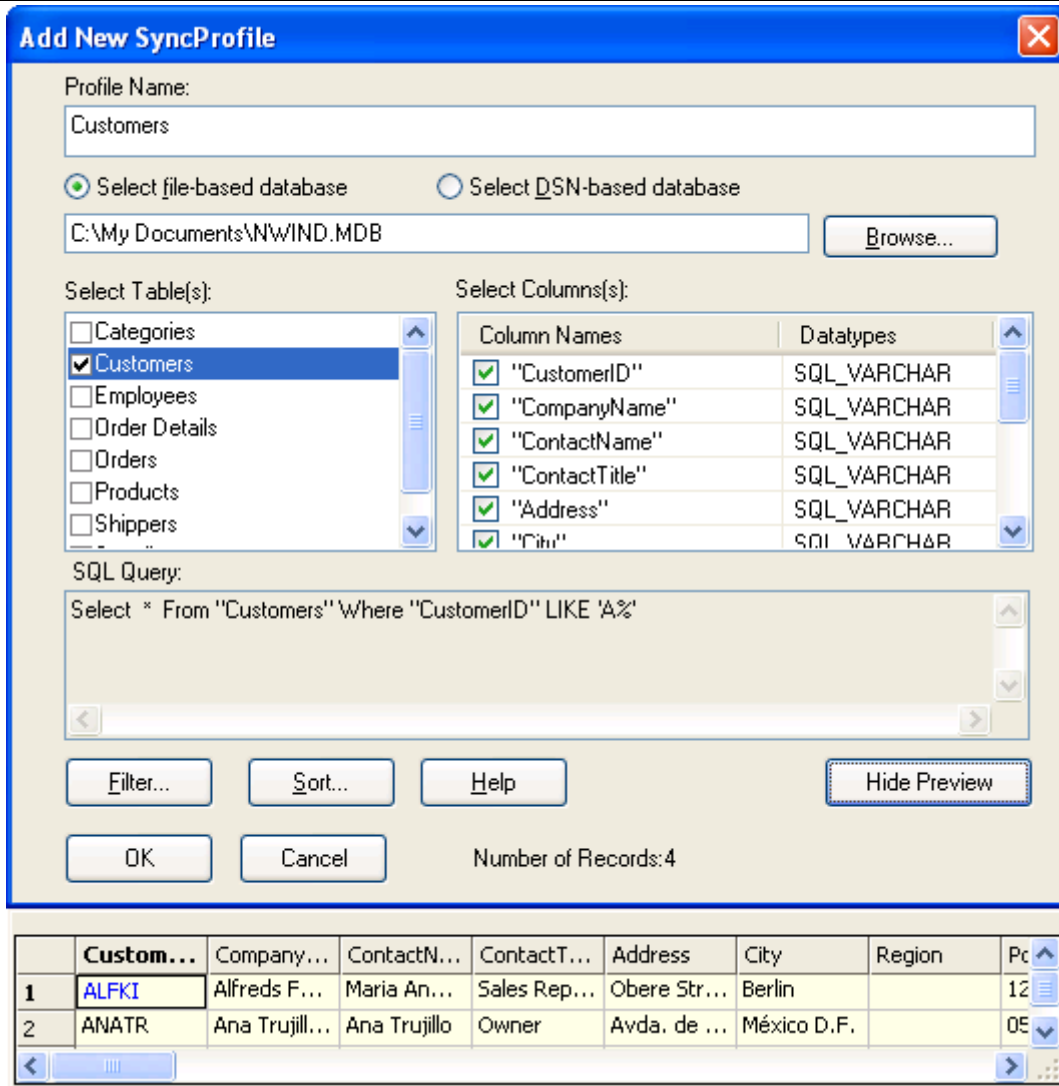


Figure 9: File based Database Selection

2. Click on **Browse** button to select file of type: **MS Access, Excel, FoxPro, dBase** or, click on Browse button. You will see the screen as follows.

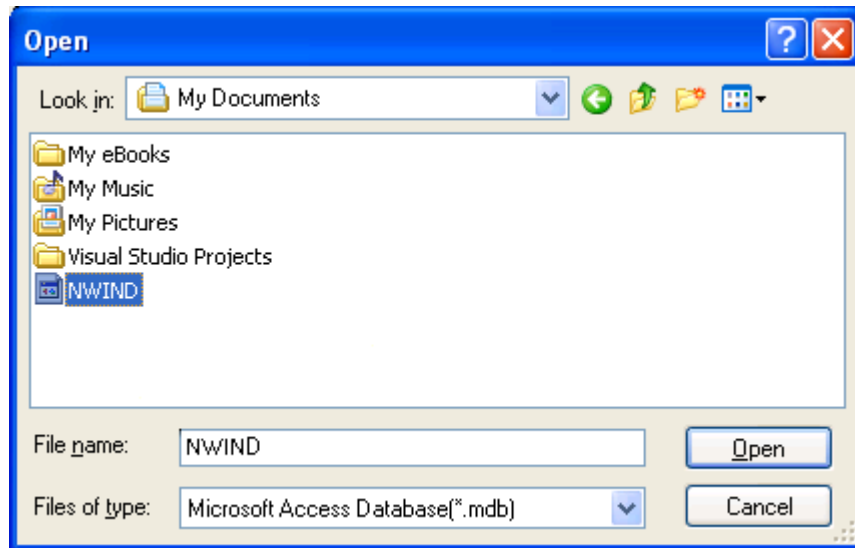


Figure 10: Database Selection

4. Select Files of type such as Microsoft Access Database(*.mdb), Excel Files(*.xls), or Foxpro/dbase Database(*.dbf) files and then select File name of your choice, for example *NWIND.mdb*, and click **Open**.
5. When you select an Excel file using Browse button, you will get a dialog prompt as:

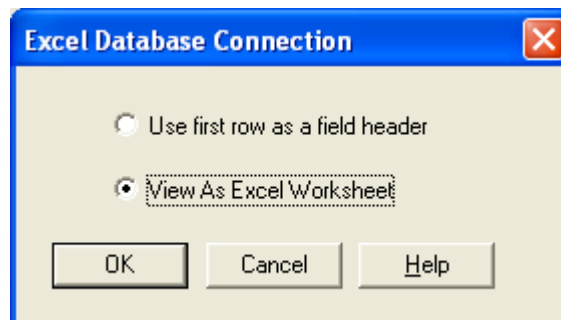


Figure 11: Select Excel View Dialog

Here, when you select "View As Excel Worksheet", contents will be shown similar to that of Excel Worksheet. Where as, when you select "View as ODBC Database", it will be treated as a database. In this case customized SQL queries will work on your Spreadsheet. To manually apply filters and sort orders click on "**Filters**" and "**Sort Order**" buttons.

3.2.2 DSN based Database

1. Click on popup provided to select database via Database Source (DSN) such as **Oracle, MySQL, SQL Server**. You will see list of available Database Source Name.

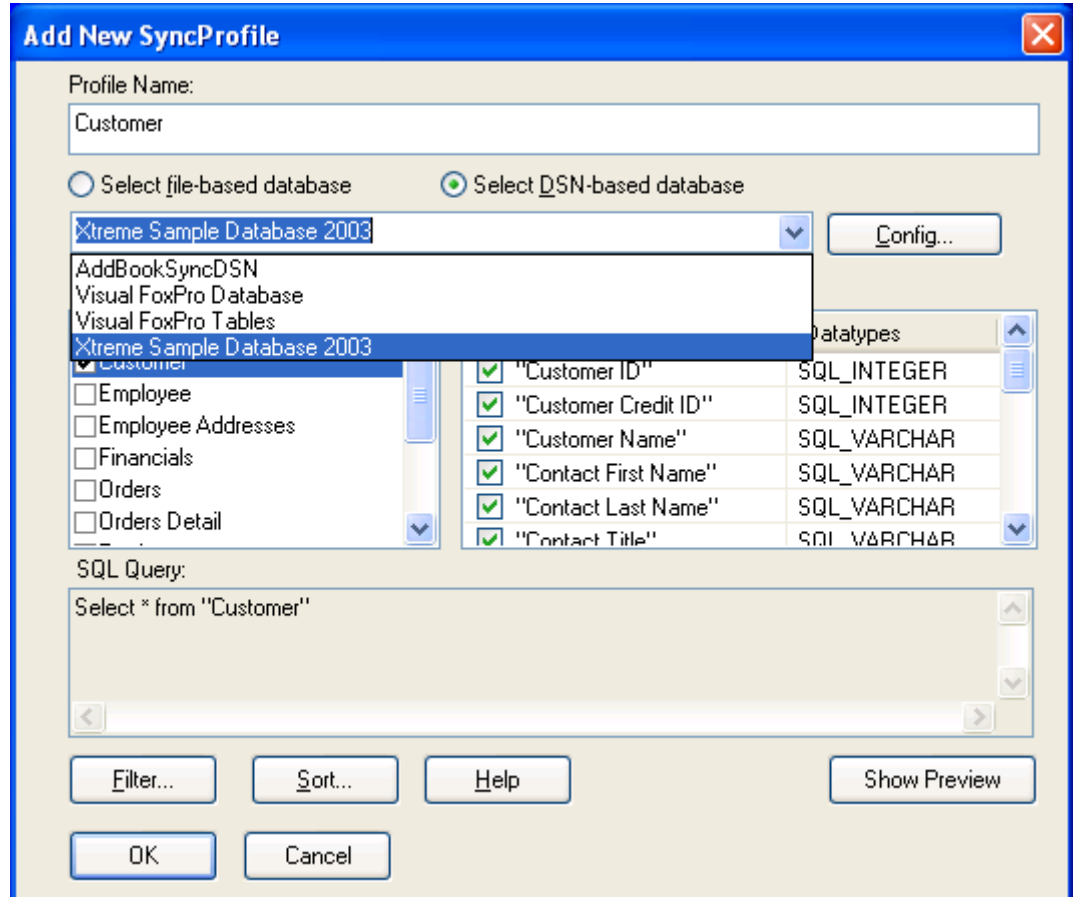


Figure 12: Build Query Dialog

2. You can manage DSN via ODBC Data Source Manager in Windows Control Panel.

3.2.3 Applying Filters

In the above dialog box, click on "**Filters**" button, you will see the following filter dialog:

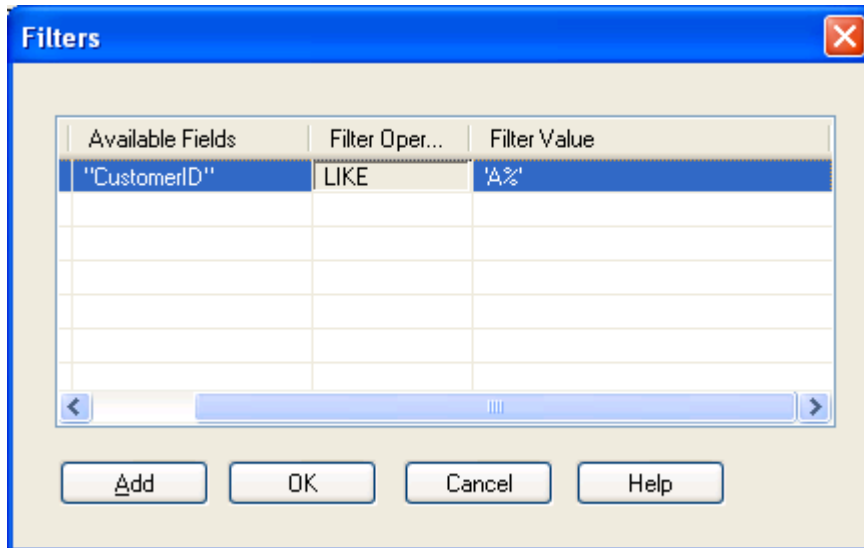


Figure 13: Apply Filter

Here, you can apply as many filters as you want. Initially, one filter is shown, by default. Click on "**Add**" button to have more filters. Select check marks to those filters you want, select field from "**Available Fields**" popup(Double click to get the popup), select operator from "**Filter Operator**" popup and click on "**Filter Value**" edit box and enter value, which you want as a filter condition value.

When you double click on particular cell to change the filter value, you will get following screen which will allow to set any value or Database Column.

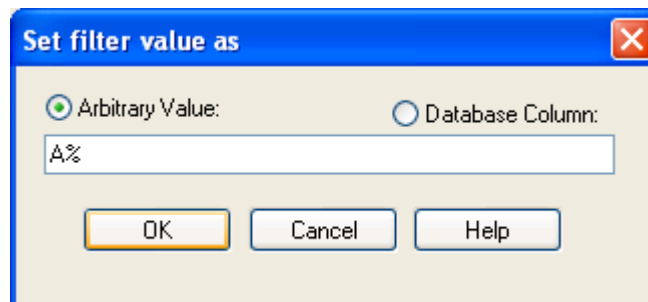


Figure 14: Filter type

In the above dialog, click on the "**Sort Order**" button, you will see the following sort order Dialog, as follows:

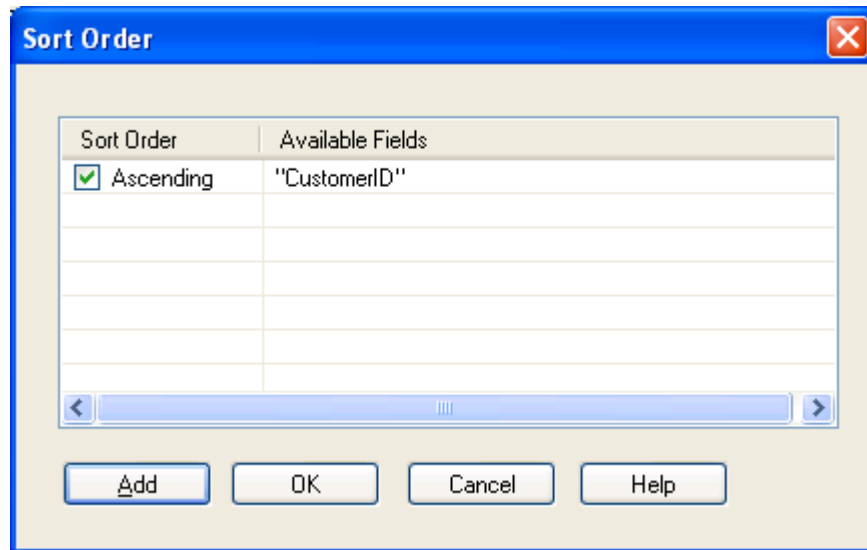


Figure 15: Apply Sort Order

Select check mark for those you want to apply sort order. Select sort order as "**Ascending**" or "**Descending**", select field from "**Available Fields**" popup. To add more filters, simply click on "**Add**" button.

3.3 Edit profile

By using Edit button available in "Profile Manager", you can edit the selected profile. You can change the selected table or change filter value and Sort by using this option.

3.4 Remove Profile

You can delete the selected profile by using the "Remove" button available on this Profile Manager.

3.5 Change Online Status

This module makes profile databases available to your Palm. When you click on "Change Online Status" link in left pane you will get following screen. Use "Sign In" button available on this dialog box to make your database available to your Palm. You must sign in to work wirelessly.

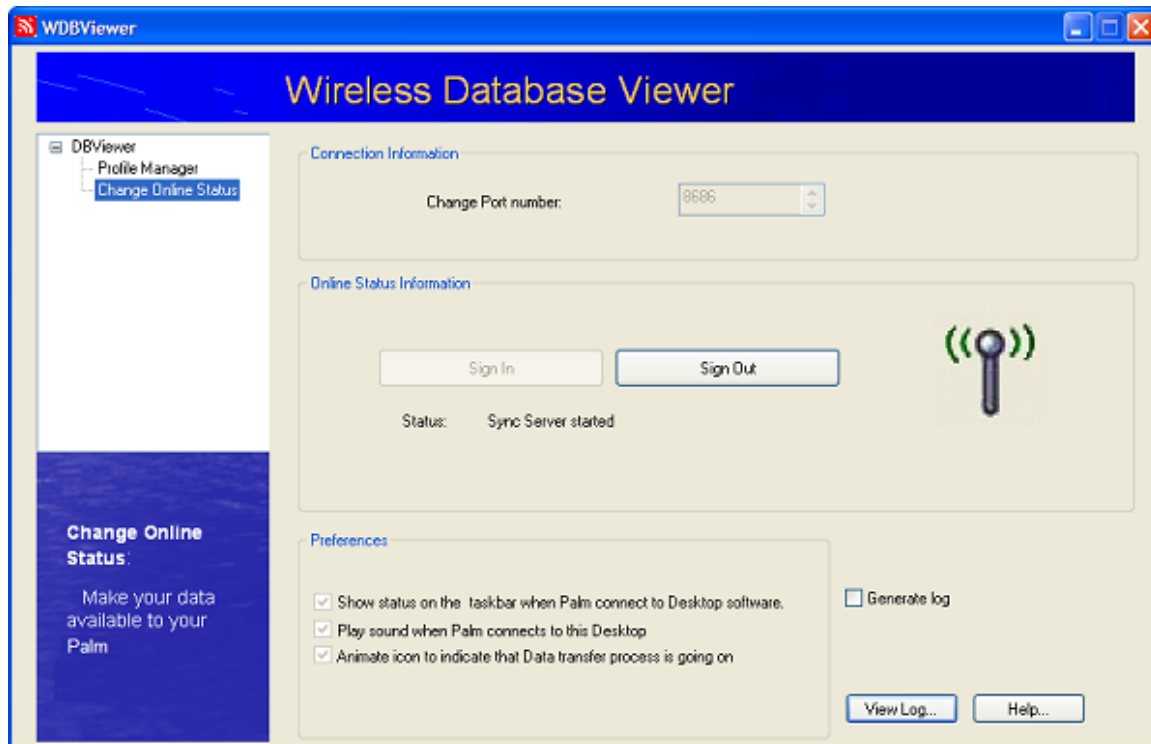


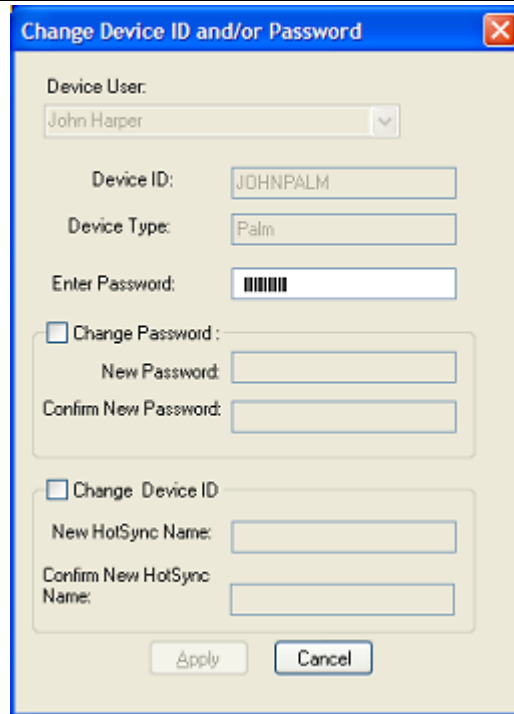
Figure 16: Change Online Status

If you get disconnected from Internet, please use “Sign in” button to make your data again available to Palm.

Here you can set various Preferences according to your need.

3.6 Change Device ID and Password:

If you changed your Palm device then to use Wireless DBViewer on new device change the HotSync Name in the software from the or you want to change the password then press “Change” button available on Login dialog form (Figure 1).



Change Device ID and/or Password

Device User:
John Harper

Device ID: JOHNPALM

Device Type: Palm

Enter Password: [Masked]

Change Password :

New Password: [Text Box]

Confirm New Password: [Text Box]

Change Device ID

New HotSync Name: [Text Box]

Confirm New HotSync Name: [Text Box]

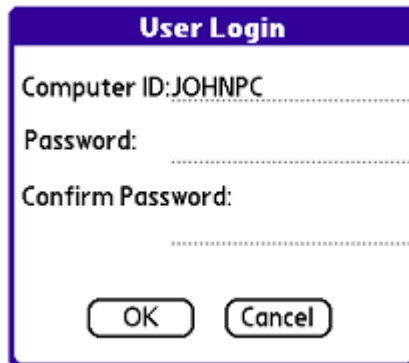
Apply Cancel

Figure 17: Change PIN and Password

4 USING THE WIRELESS DATABASE VIEWER ON THE PALM

Now we will see, how to get and view the desktop database in Palm Wireless DBViewer .

After successful installation of "Palm DBViewer, on your Palm Select Application ->Wireless Database Viewer icon and click on it, you will get following login screen. Here enter the proper information. You must enter exact information that you had entered in Desktop side application.



The image shows a 'User Login' dialog box with a purple title bar. It contains three text input fields: 'Computer ID:JOHNPC', 'Password:', and 'Confirm Password:'. Each field has a dotted line indicating the input area. At the bottom, there are two buttons: 'OK' and 'Cancel'.

Figure 18: Palm Login Form

4.1 Fetch Profiles:

When you select OK button, after verification of your information, you will allowed entering in to application. If you have created profile in Desktop side application, you need to fetch profile list by using "Database->Fetch Profiles" menu.

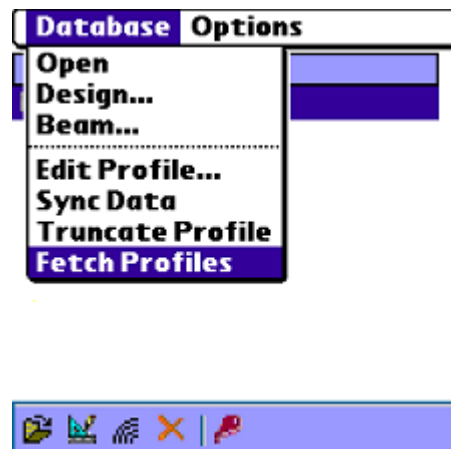


Figure 19: Fetch Profiles

When you “Fetch Profile(s)” from menu, then the profile list you have created on Desktop side software will be get on your Palm.

Once you list get fetched from desktop, it will look like as follows.



Figure 19: Fetched Profiles

4.2 Sync Data:

Once you get the list, From the menu you need to fetch the data by using “Sync data” submenu from the “Database” menu.

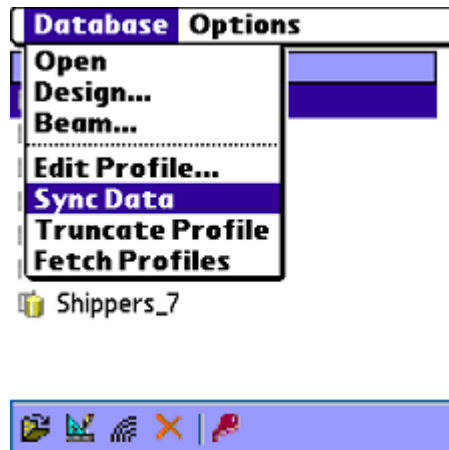


Figure 20: Sync Data Menu

When you use “**Sync data**”, you select data get fetched like this. It will display total number of available records and current number of records fetched also it display the number of byte transfer.



Figure 21: Syncing data

4.3 Open Database

Use “Open” submenu to view your selected database.

The database contents can be view in two modes: Grid and Record.

In Grid View, you will able to view database contents in Column view form. This has lots of features.

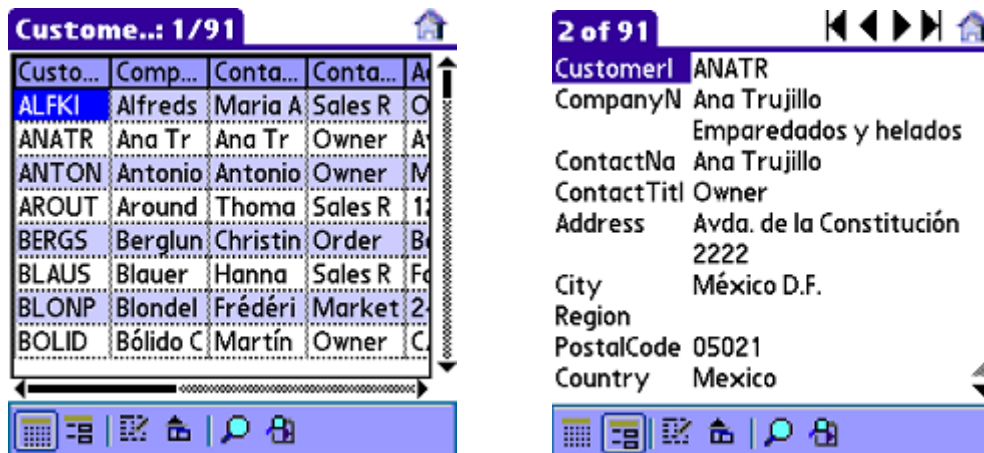




Figure 22: Grid View , Record View and Detail View

4.4 Find and Find Next:

To search a particular string within the selected database, you can use "Find" and "Find Next" menu options available in both "Grid" and "Single Record" view.

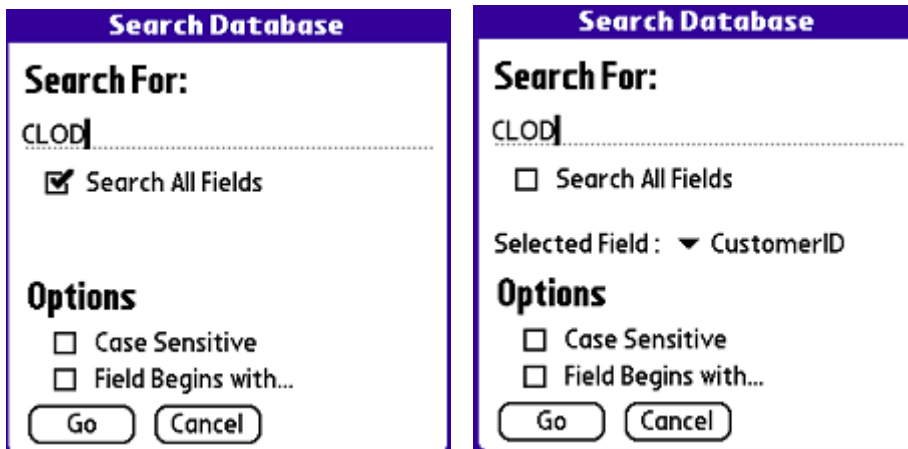


Figure 23: Search within single Field

You can search in single column also, you need to enable “Search all fields” option on “Find” form then select the required field from the available list of fields.

4.5 Fetch Filtered and Sorted Data:

You can fetch the data according to your need by selecting specific columns or by implementing Filter and sort. You need to choose the Edit profile option for it.

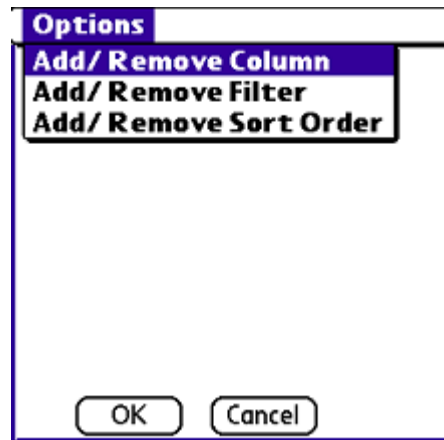


Figure 24: Edit Profile option

When you are on the edit profile option , from menu you can get “Add/Remove Column” menu which allows you to select columns which data you want to fetch.

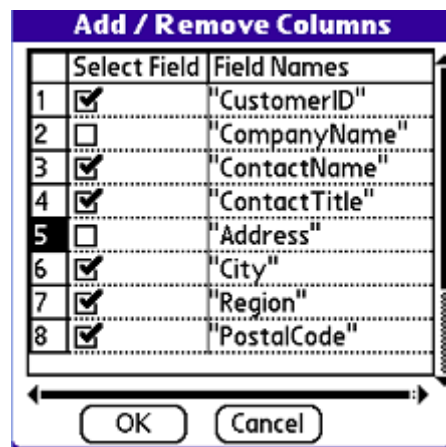


Figure 26: Select Column

For selected profile you can implement Filter from menu available on “Edit Profile” form (Figure 16). Use tap to change the Field name. Condition and value. You can set Filter value as Arbitrary value or Database Column.

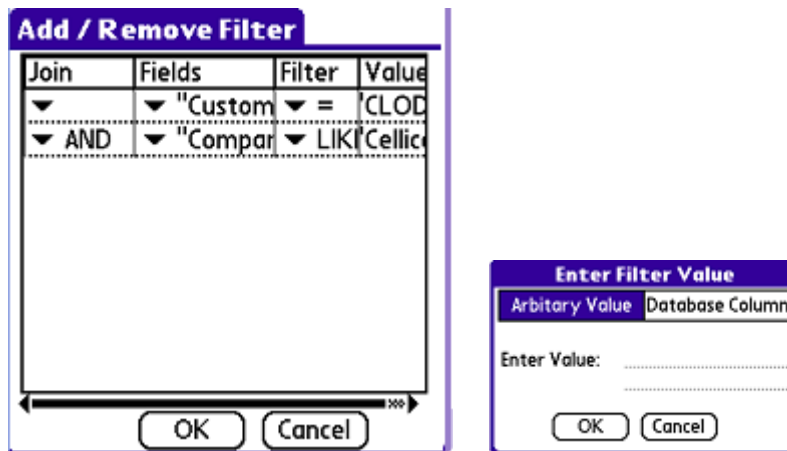


Figure 27: Apply Filter

Similarly you can implement sort on selected profile.



Figure 28: Apply Sort

After implementing Everything you need to fetch the data but before fetching data according to this update, change the settings from “Options->Change SQL Priority” . Please change “**SQL Priority**” option from “Desktop” to “Device”. This will fetch your desktop data according to query available on Palm.

4.6 customization

Preferences:

You can customize the way date and time fields are shown. Select "**Preferences...**" option from Options menu. In "Preferences" form you can change default settings of application like default view of your database, Date and Time formats, Decimal spaces.

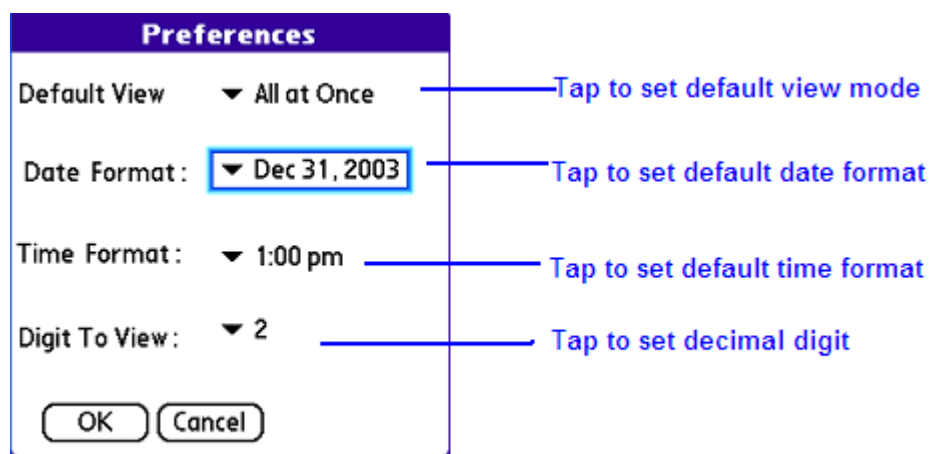


Fig. 29 Customizing Various Options

- **Default Record View**
When you open a database profile, wireless DBViewer displays all records in Grid mode "All at once" view. You can change this view to "Single Record" view or back to "All at once", so that when ever you open a database profile, it will display this view.
- **Digit to View**
You can set the number of decimal places to be displayed in record view from "**Decimal Display..**" customization. set the number of decimal places to display for each decimal number in record view. This preference will apply for only data type float or Single. Datatype such as Numeric, having specifically specified fixed decimal point will not change due to this preference.
- **Date Display**
You can customize the view of date data type from available date display types, so that all dates will be displayed in this selected format.
- **Time Display**
You can customize the view of time data type from available time display types, so that all time data will be displayed in this selected format.

- Font
You can customize the application font (stdFont, boldFont, largeFont, largeBoldFont).

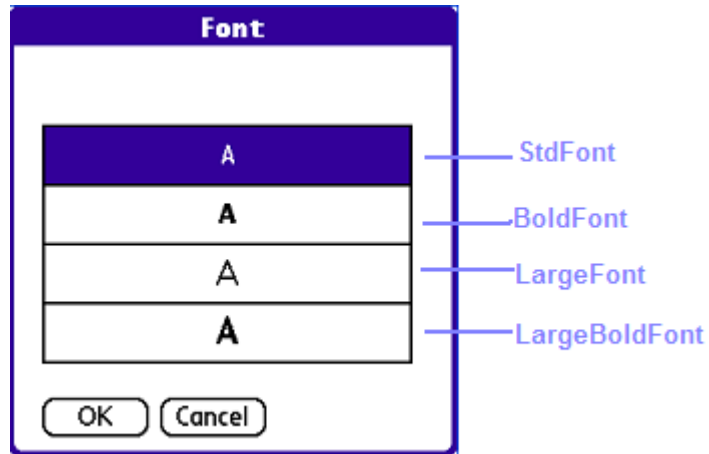


Figure 30: Change Font

5 SUPPORTED DATA TYPES

Currently Palm Wireless Database Viewer supports following data types.

- Memo, Char, VarChar, VarChar2
- Number of type: Byte, Decimal, Integer, Long Integer, Single, Real, Float, Double
- GUID
- Date/Time
- AutoNumber of type: Long Integer
- Yes/No
- Hyperlink
- Currency

6 SYSTEM REQUIREMENT

Desktop: Windows 2000 or Windows XP with Service Pack 2.

Palm: Palm OS 5.0 or above.

Also for Windows 2000/ Windows XP set following setting according to your computer Operating system.

Windows 2000

Select "Dial up Connection" then "security" Please disable Check mark

"Don't allow external application to access My Computer".

For Windows XP

From Control Panel ->Windows Firewall->General->

Please uncheck "Don't allow exceptions".

7 CONTACT US

You can use the following email addresses to contact us:

- Product support
support@cellica.com
- Sales inquiries
sales@cellica.com
- Custom Software
customsoftware@cellica.com