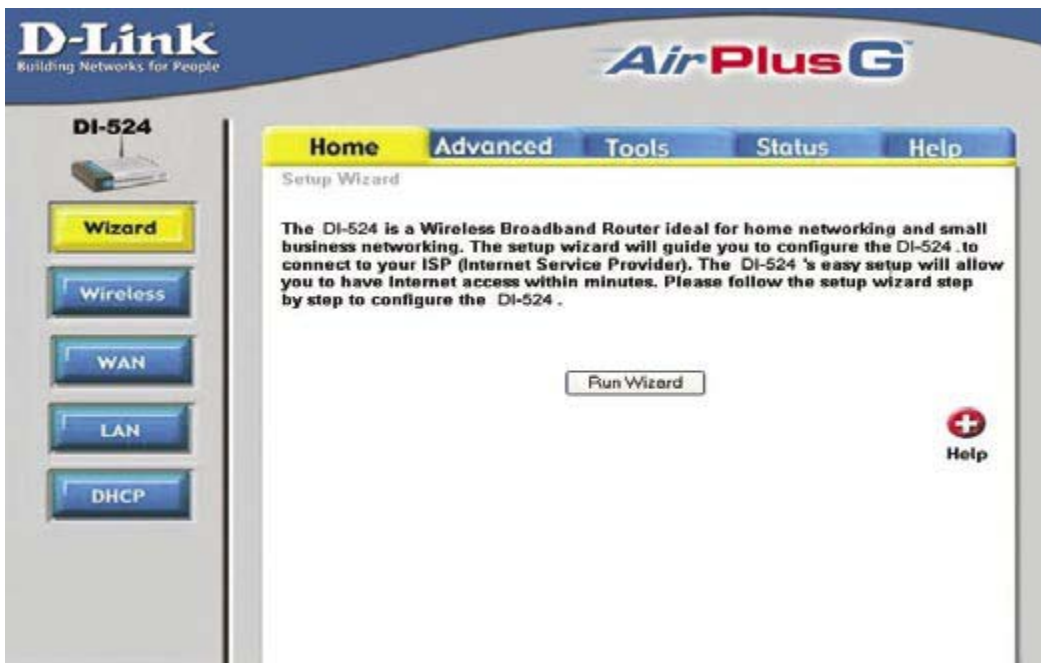


D-Link DI-524 Router Configuration for Wireless Database Viewer

1. Open your browser on the PC or laptop, which is connected to the router.

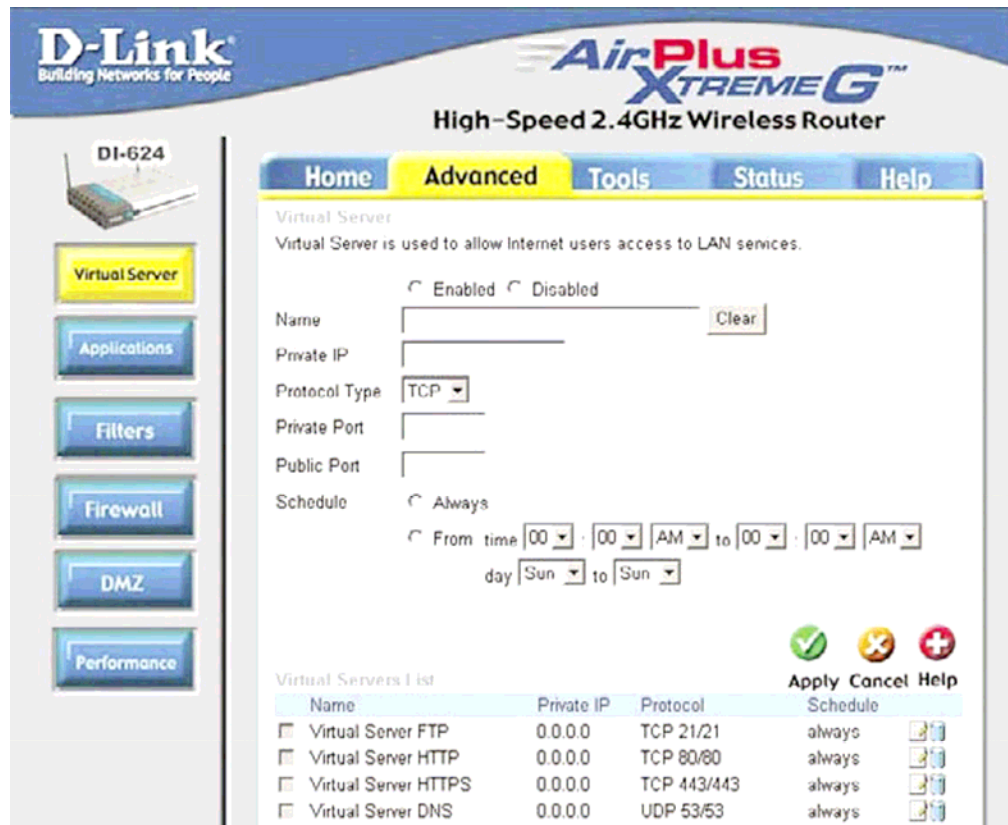


2. Type in the IP Address of the Router (<http://192.168.0.1>)
Note: if you have changed the default IP Address assigned to the DI-524, make sure to enter the correct IP Address.
3. Type **admin** in the **User Name** field
4. Leave the **Password** blank, unless you set up a password before.
5. Click [OK]
6. You should see the following screen:



7. Click on **Advanced** tab on the top pane.

8. Click on **Virtual Server** button in the left pane. You should see the following screen:



9. Note down the IP address of your PC or Laptop. Use Windows **Start Menu -> Run** menu. Then type **cmd** click on **[OK]** and type **ipconfig** on the prompt to find out that IP address.

10. Select **Enabled** radio button.

11. Enter the following information, in the edit fields:

Name: **WDBViewer**

Private IP: **192.168.0.101** (Use the IP you wrote down in step 9 above)

Protocol Type: **TCP**

Private Port: **8686**

Public Port: **8686**

Schedule: **Always** (If you prefer to limit the access to Wireless Database Viewer only certain time, choose the appropriate days and time)

12. Please make sure that **Enabled** radio button is selected, as mentioned in step 10 above.

13. Click on [**Apply**] button to save the changes.
14. Login to the Wireless Database Viewer Desktop and make sure that Online Status is “Sync Server Started” by clicking on [Sign In] button.
15. If you have created the profile in Wireless Database Viewer Desktop, now you should be able to use the BlackBerry to fetch the data.