

# BLACKBERRY DATABASE VIEWER PLUS USER GUIDE

## CONTENTS

---

<b>1.</b>	<b>INTRODUCTION .....</b>	<b>5</b>
1.1	FEATURES .....	5
<b>2.</b>	<b>INSTALLATION .....</b>	<b>6</b>
<b>3.</b>	<b>USING DATABASE VIEWER PLUS ON THE DESKTOP .....</b>	<b>7</b>
3.1	MANAGE USERS .....	8
3.2	DBVIEWERPLUS MENU .....	10
3.3	CREATING NEW PROFILE .....	10
3.4	PROFILE TYPE SELECTION .....	11
3.5	DATABASE SELECTION .....	13
3.6	TABLE SELECTION/QUERY BUILDING .....	13
3.6.1	APPLYING FILTERS .....	14
3.6.2	APPLYING SORT ORDERS .....	16
3.7	SYNC INFORMATION .....	18
3.8	MODIFYING EXISTING PROFILE .....	18
	<i>3.8.1 Renaming Profile</i> .....	18
	<i>3.8.2 Rebuilding Query</i> .....	18
	<i>Deleting Profile</i> .....	20
3.10	SYNCHRONIZE YOUR DATA .....	22
3.11	TAKING BACKUP .....	23
3.12	RESTORING DATA .....	23
3.13	IMPORT DATA AS A .CSV .....	23
<b>4.</b>	<b>USING THE DATABASE VIEWER PLUS ON THE BLACKBERRY .....</b>	<b>25</b>
4.1	VIEW DATABASE CONTENTS .....	25
	4.1.1 <i>Record View</i> .....	26
	4.1.2 <i>Grid View</i> .....	27
4.2	VIEW A FIELD CONTENTS IN DETAIL .....	28
4.3	ADD RECORD .....	28
4.4	EDIT RECORD .....	28
4.5	SEARCH DATABASE .....	28
4.6	CREATE NEW DATABASE .....	29
4.7	CREATE VIEWS .....	33
	4.7.1 <i>Apply Filter</i> .....	34
	4.7.2 <i>Apply Sort</i> .....	35
	4.7.3 <i>Select Field of your choice</i> .....	35
	4.7.4 <i>Change the View</i> .....	36
4.8	NEW CATEGORY CREATION .....	36
4.9	EXPORT RECORD/FIELD DATA TO MEMO PAD .....	37
4.10	SEND MESSAGE .....	37

---

4.11	CUSTOMIZATION .....	38
<b>5.</b>	<b>BLACKBERRY KEYPAD SHORTCUTS.....</b>	<b>39</b>
5.1	SCREEN : HOMESCREEN .....	39
5.2	SCREEN : GRID SCREEN AND RECORD VIEW SCREEN .....	39
5.3	SCREEN : DETAIL VIEW SCREEN .....	40
<b>6.</b>	<b>FREQUENTLY ASKED QUESTIONS .....</b>	<b>41</b>
6.1	BLACKBERRY .....	41
6.2	DESKTOP .....	43
<b>7.</b>	<b>SUPPORTED DATA TYPES .....</b>	<b>44</b>
<b>8.</b>	<b>CONTACT US .....</b>	<b>45</b>

## LIST OF FIGURES

---

Figure 1: Database Viewer Plus on the Desktop .....	7
Figure 2 : Add BlackBerry device to software .....	8
Figure 3: BlackBerry Add wizard .....	9
Figure 4: Assign BlackBerry User Name .....	9
Figure 5: Create Profile .....	10
Figure 6: Profile Creation Menu.....	11
Figure 7: Select Database .....	12
Figure 8: Build Query Dialog .....	14
Figure 9: Add Filter .....	15
Figure 10: Filter Conditions .....	15
Figure 11: Apply Sort .....	17
Figure 12: Sort Conditions .....	17
Figure 13: Sync Information.....	18
Figure 14: Update Query of selected Database .....	19
Figure 15: Build Query .....	20
Figure 16: Category Creation .....	21
Figure 17: Edit Categories .....	22
Figure 18: Restore Data .....	23
Figure 19: Import BlackBerry data as .csv .....	24
Figure 20: Registration Form .....	25
Figure 21: View Database Content.....	26
Figure 22: Grid View .....	26
Figure 23: Record View .....	26
Figure 24: Grid View with Menu Option .....	27
Figure 25: Detail View .....	28
Figure 26: Search Content .....	29
Figure 27: New Database Creation on BlackBerry .....	29
Figure 28: Standard or Custom Database .....	30
Figure 29: Standard Database List.....	30
Figure 30: Create Custom Database .....	31
Figure 31: Table Creation.....	31
Figure 32: Add Fields to Database .....	31

---

Figure 33: Edit Datatype of columns of New Table.....	32
Figure 34: Create Category to new Database. ....	32
Figure 35: Add Records to new Database .....	32
Figure 36: Create and Change Views .....	33
Figure 37: Create New View .....	33
Figure 38: Add Filter/Sort in View.....	34
Figure 39: Apply Filter in View .....	34
Figure 40: Apply Sort in View .....	35
Figure 41: Select Field for View .....	36
Figure 42: Change View.....	36
Figure 43: New Category creation on BlackBerry .....	37
Figure 44: Transfer data to Memopad .....	37
Figure 45: Export Data to Email client.....	38
Figure 46: Preferences .....	38

---

## 1. INTRODUCTION

---

Being away from your office does not mean not having the access to your data. Consider the scenario when you want to carry a copy of the database on your BlackBerry device, or want to update the data on your BlackBerry device and later on use that data to update the contents of the database when you are at your computer. Now it is possible with the BlackBerry Database Viewer Plus.

BlackBerry Database Viewer Plus allows you to be more productive by allowing you to view and update the database contents on your BlackBerry. When you connect the BlackBerry to your computer it will synchronize the data with the database. It synchronizes with Microsoft Access, Microsoft Excel, and any ODBC Compliant database like Oracle, SQL Server, etc.

The software package consists of two software: the BlackBerry DBViewer Plus Desktop that runs on Microsoft Windows, and BlackBerry DBViewer Plus that run on the BlackBerry. You will use the desktop software to send database contents to the BlackBerry device as well as receive the database contents from it. BlackBerry DBViewer Plus will display the contents of the database and will also allow you to add, delete or modify those contents. Later you can use USB Cable to synchronize the contents between the database and BlackBerry device.

### 1.1 Features

- **Export Desktop database to BlackBerry (Desktop to BlackBerry):** Transfer any desktop database to BlackBerry. This is the default setting.
- **Import data from BlackBerry to Desktop database (BlackBerry to Desktop):** Transfer BlackBerry side database to original desktop database. Use this option after updating the database on BlackBerry and when you want to reflect the updates in your database.
- **Create databases on BlackBerry and import those on Desktop as .csv format.**
- Supported Databases: MS Access, MS Excel, Oracle, SQL Server, FoxPro, dBase and any **ODBC Compliant Database.**
- View and sync any database with BlackBerry.
- Modify database contents on BlackBerry and reflect them to database.
- Make a phone call for the selected field's numeric contents, which will be treated as a phone number.
- Apply SQL Select queries, filters and Sort the fields.
- Find/Find again/ Replace option to search a record.
- Import Record/Field data to Memo pad.
- Manage database in different categories.
- For BlackBerry Pearl , Open Email Client for Selected Field/Record.
- Create different views on BlackBerry by applying Filter/ Sort and Selecting field of your choice.
- Supports Unicode language database such as Japanese, Chinese, Korean, and Russian etc.

---

## 2. INSTALLATION

---

You should download **BBDBViewerPlusSetup.exe** file if you have not done that already.

Double Click on this Setup file, This Setup program will install the application in the directory path you mentioned. Shortcut for **Desktop side application** and **User Guide** will be available on your desktop. In installation folder **BBDBViewer Plus** you will have 2 folders and one Readme.txt file. Two folders are **Desktop DBViewer Plus** and **BlackBerry DBViewer Plus**.

**Desktop DBViewer Plus** folder contains **DBViewerPlus.exe** and **BlackBerryDBViewerPlusUserGuide.pdf**

Shortcut for Desktop application **DBViewer Plus.exe** is available on your desktop.

**BlackBerry DBViewer Plus** folder contains another folder “BlackBerry OS 4.2 or Above”. This folder contain DBViewerPlus file.

Use **Application Loader** available with your BlackBerry Desktop Manager to install DBViewerPlus.alx file to your BlackBerry device.

You can install BlackBerry side DBViewerPlus application **wirelessly**. Use following link in BlackBerry Browser and download application "dbviewerplus" on the BlackBerry having OS 4.2 or above.

**"<http://www.cellica.com/ota/bbdbviewerplus.asp>"**

Now you are ready to use BlackBerry DBViewer Plus software.

Use BlackBerry DBViewer Plus application on Desktop to send and receive data to and from BlackBerry.

Use DBViewer Plus application on BlackBerry to view and modify (Add/Update/Delete) records.

**Note:** Data will be transferred using USB Database cable and Both Desktop and BlackBerry side DBViewer Plus software must be running for transferring the data.

### 3. USING DATABASE VIEWER PLUS ON THE DESKTOP

This section will explain how to use BlackBerry Database Viewer Plus desktop software with an example.

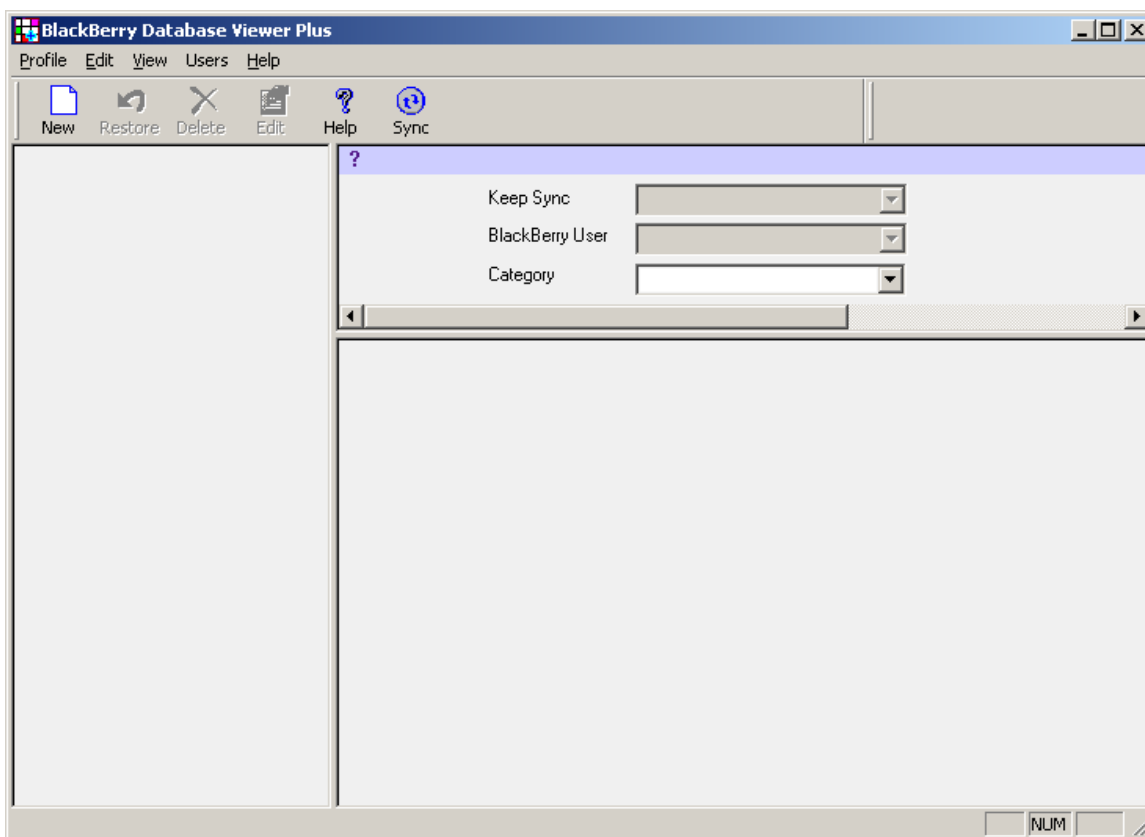
Suppose you have one Microsoft Access database NWIND.mdb having tables named Employee, Customers, and Products in it.

You wanted to work with these databases on BlackBerry.

Let's see how it can be done?

Run BlackBerry DBViewer Plus from the shortcut available on the desktop, or use Start Menu: **Start->Programs->BlackBerry DBViewerPlus->BlackBerry DBViewerPlus.**

You will get the following screen.



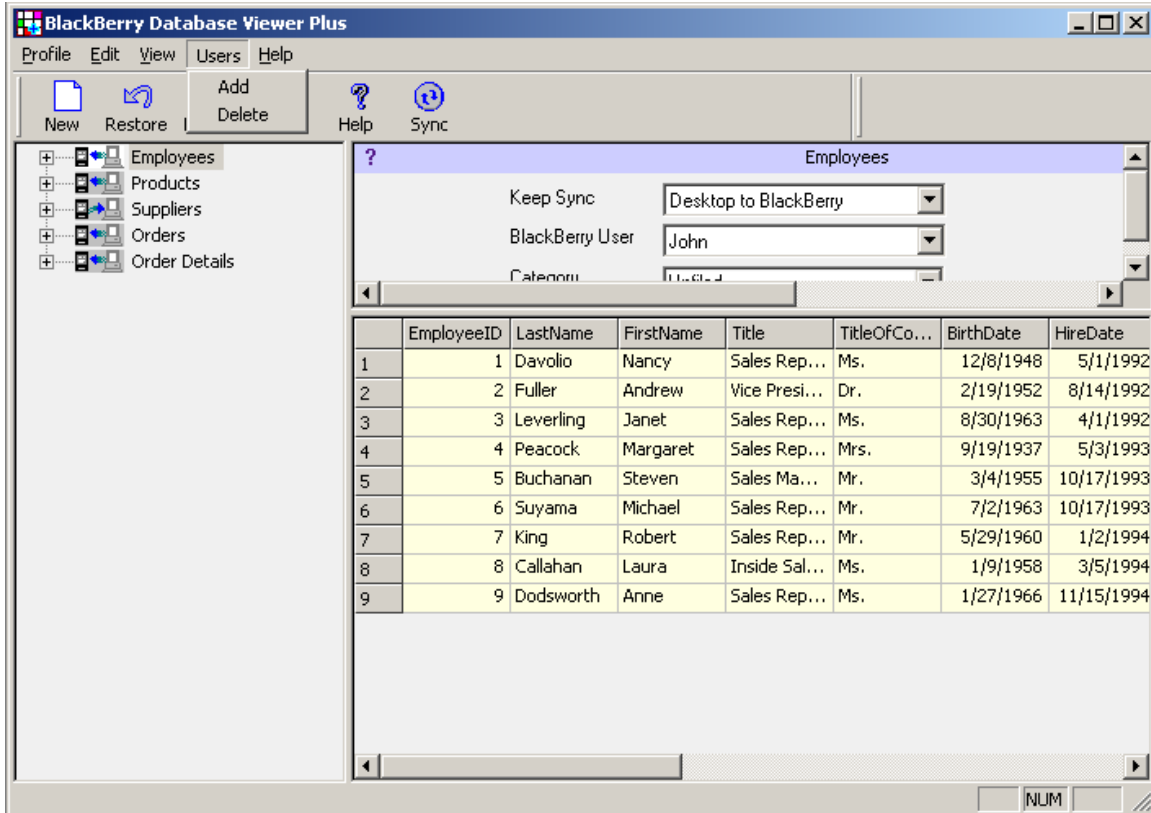
**Figure 1: Database Viewer Plus on the Desktop**

You can transfer your database from desktop to BlackBerry and vice versa.

### 3.1 Manage Users

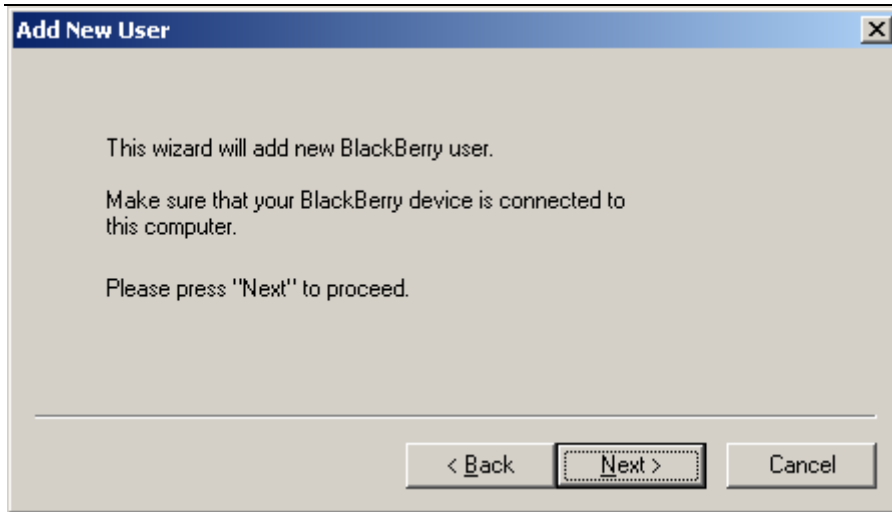
Before start to using Blackberry Database viewer plus, You have to create association of your Blackberry with Blackberry Database Viewer Plus desktop application. This can be done in two easy steps:-

- 1) Connect your BlackBerry device to your computer.
- 2) Select Users->Add Menu



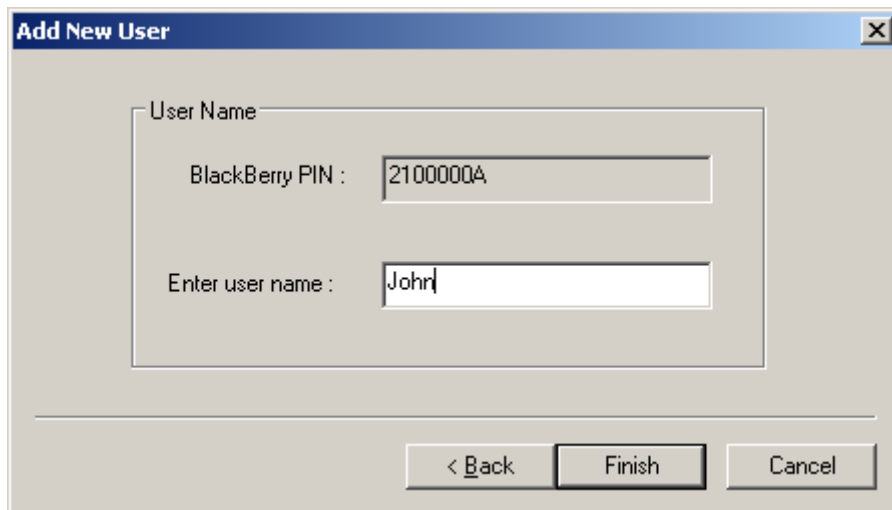
**Figure 2 : Add BlackBerry device to software**

This will starts “Add User” wizard,



**Figure 3: BlackBerry Add wizard**

After Clicking Next button will show you following screen, give the name you desired to be associated with your Blackberry. This name will be used as your device identity while manipulating profiles in Blackberry database Viewer Plus desktop application.



**Figure 4: Assign BlackBerry User Name**

## 3.2 DBViewerPlus Menu

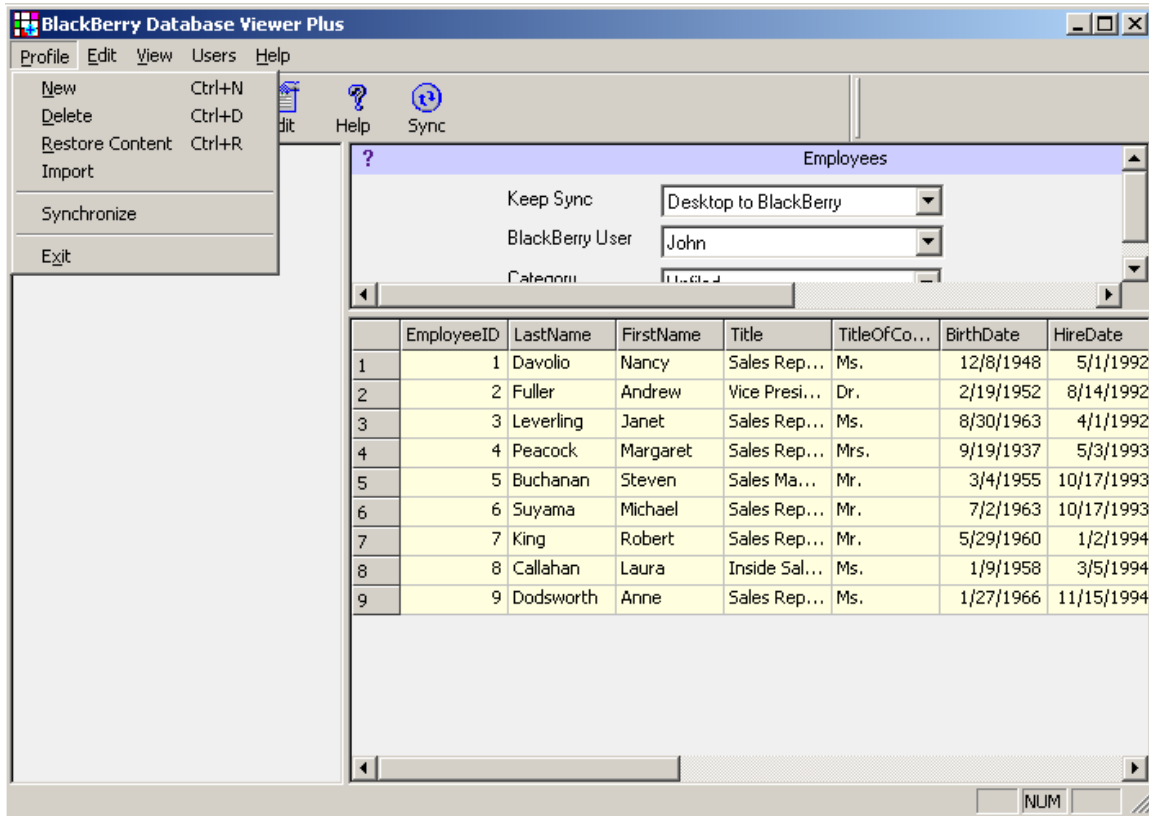


Figure 5: Create Profile

## 3.3 Creating New Profile

Right click in **Left Pane** or from **Profile menu**, click New.

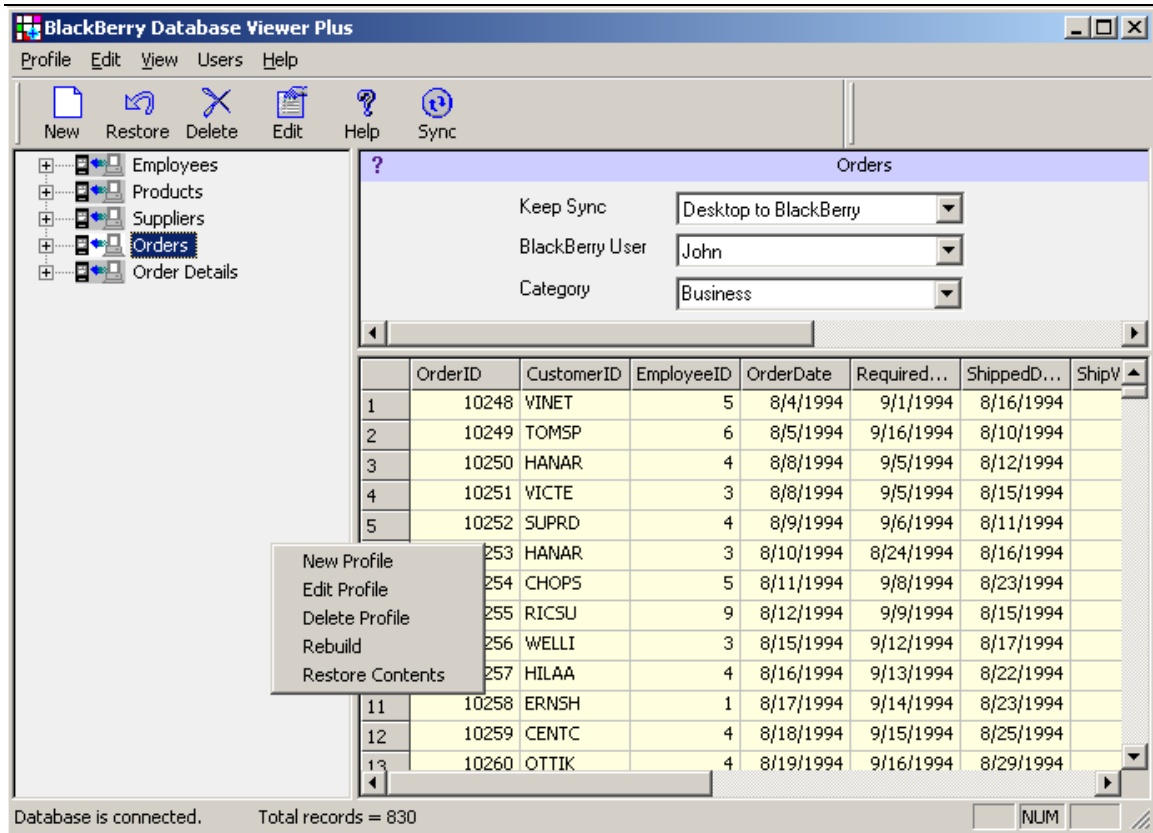
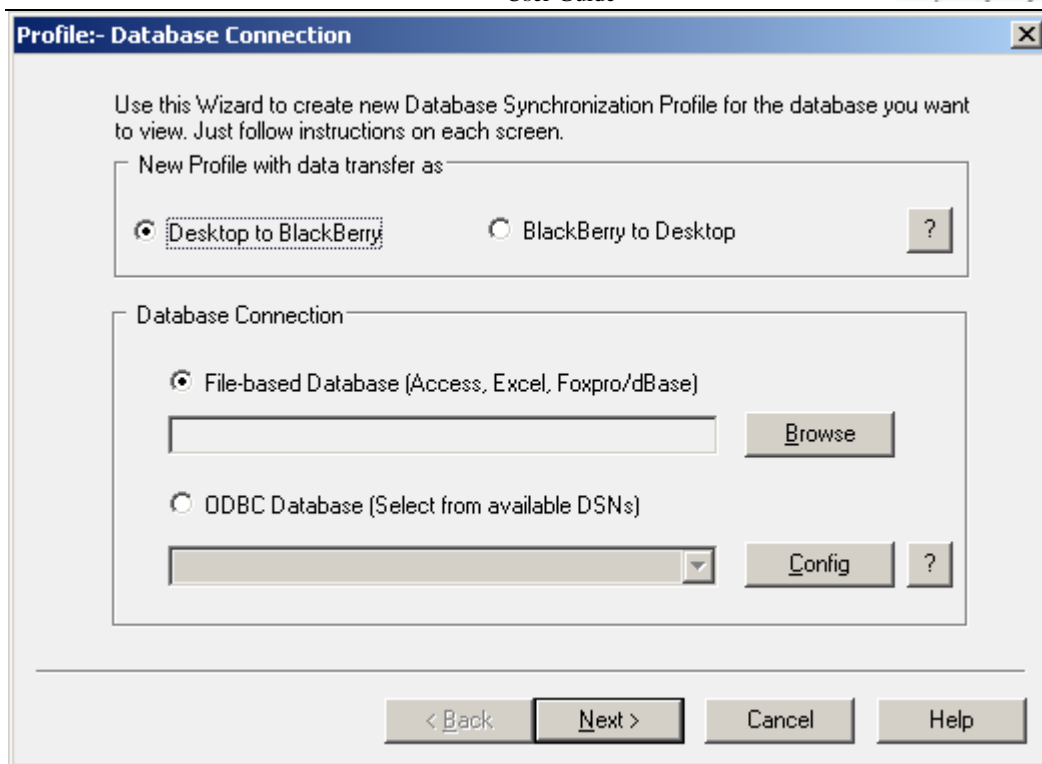


Figure 6: Profile Creation Menu

### 3.4 Profile Type Selection

After selecting New Profile, you will be prompted to New Profile Wizard as shown below.



**Figure 7: Select Database**

From above screen select either select "Desktop to BlackBerry" or "BlackBerry to Desktop" profile type. DBViewerPlus supports only these two types of sync profile.

- **Desktop to BlackBerry**

Select this profile type when you want to transfer your desktop database contents on BlackBerry device. Every time, when sync takes place, this profile will overwrite BlackBerry contents from desktop, regardless of BlackBerry contents.

- **BlackBerry to Desktop**

Select this profile type to transfer your BlackBerry contents on to desktop database. First time, desktop database contents will be transferred on to BlackBerry and then after, for every syncing, BlackBerry contents will be transferred in desktop database.

Please select only such desktop database that does not have any constraints/validations defined in it, as it may create problems while transferring BlackBerry contents.

Although, you can select such database, but you may lose some of your desktop contents depending on database constraints. Select this profile type on your own risk.

If you find that, after syncing you have not retained all database contents, use backup restore feature to restore your desktop database contents. DBViewerPlus takes backup of desktop database before transferring BlackBerry contents into it.

## 3.5 Database Selection

From above figure, [Fig. 7](#), either select "File Based Database", or "ODBC Database".

- **File Based Database**

File based database allows you to select database like MS Access (mdb), Excel file (xls), FoxPro/dbase (dbf) files.

Click on browse button and browse to the location where you database file is situated and select one.

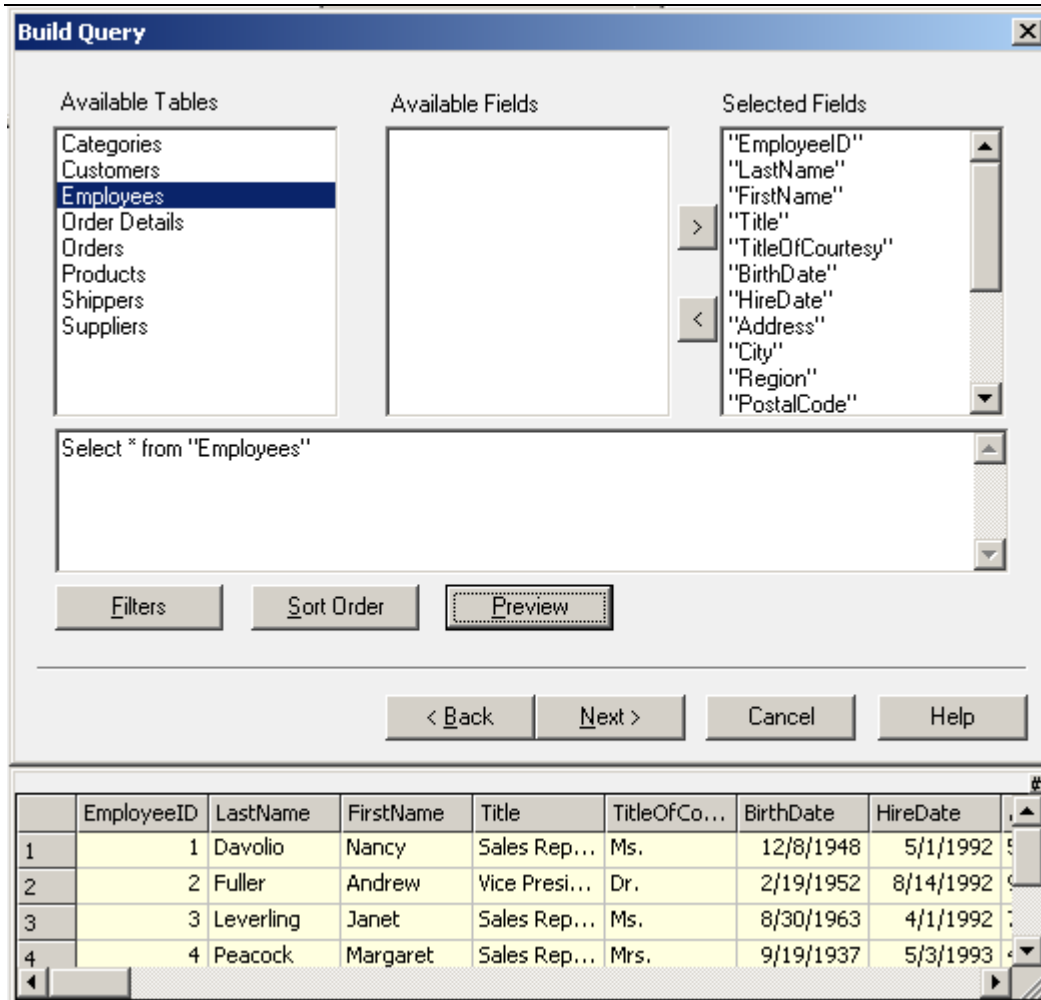
- **ODBC Database**

Databases compatible to ODBC can be selected using DSNs. Select a DSN from available DSNs of your machine. You can manage these DSNs by clicking on "Config" button.

*While selecting database, you may be prompted to enter security authentication like User Name and Password.*

## 3.6 Table Selection/Query Building

After completing database selection, you will be prompted to "**Build Query**" dialog, where you need to select a table from selected database. You will see screen like below:



**Figure 8: Build Query Dialog**

Select a table, select/deselect required fields to be included in BlackBerry database profile. Result of these table/field selections is shown in terms of SQL Select query to you. You can directly edit this SQL Select query to result as you want. You can enter any valid SQL select query, which may include table joining, filtering, sorting etc. Click on **"Preview"** button to obtain content preview, which are going to be included in profile.

To manually apply filters and sort orders click on **"Filters"** and **"Sort Order"** buttons.

### 3.6.1 Applying Filters

In above figure, [Fig. 4](#), click on **"Filters"** button, you will see following filter dialog:



Select field from "**Fields**" popup, select operator from "**Filter Operator**" popup and click on "**Filter Value**" edit box and enter value, which you want as a filter condition value.

Remember, filter values must be proper as per data type of selected fields.

If you selected numeric field, say ID, then filter value must be numeric, say 35. For character data type filter value must be included in single quotes ('). For date/time fields, filter value must be in #. If you select filter operator IS then filter value must be NULL or NOT NULL. If you select filter operator like then filter values must be a pattern included in single quote.

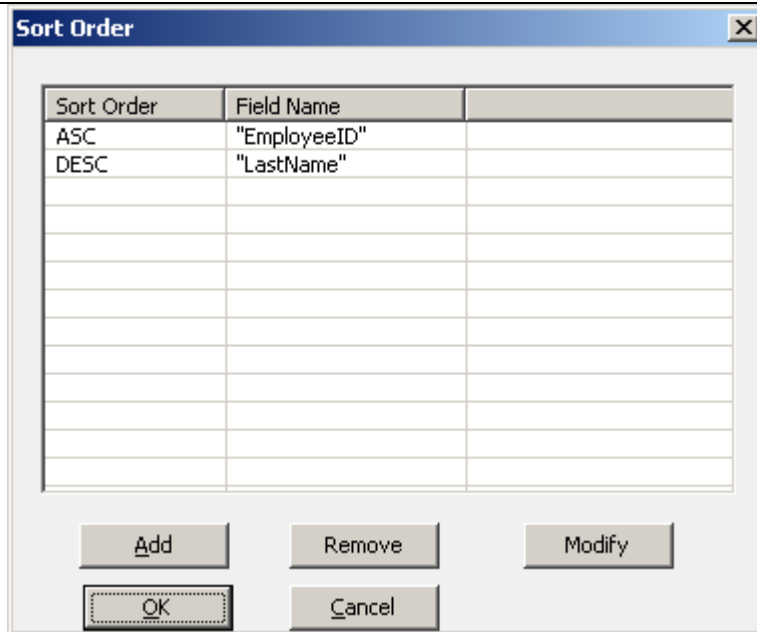
Here are some examples of filters.

```
PhoneNO IS NULL
Name IS NOT NULL
name like 'a%' : Name starting with letter a
name = 'John'
amount >= 2000
birthdate = #1/1/1978#
time >= #2:10#
birthdate >= '1-jan-1978'
```

**Note:** Using # for filter conditions values may change depending on which database you are using. MS Access, Excel allows to uses # where as Oracle, SQL Server allows to use single quote (') for date filter values.

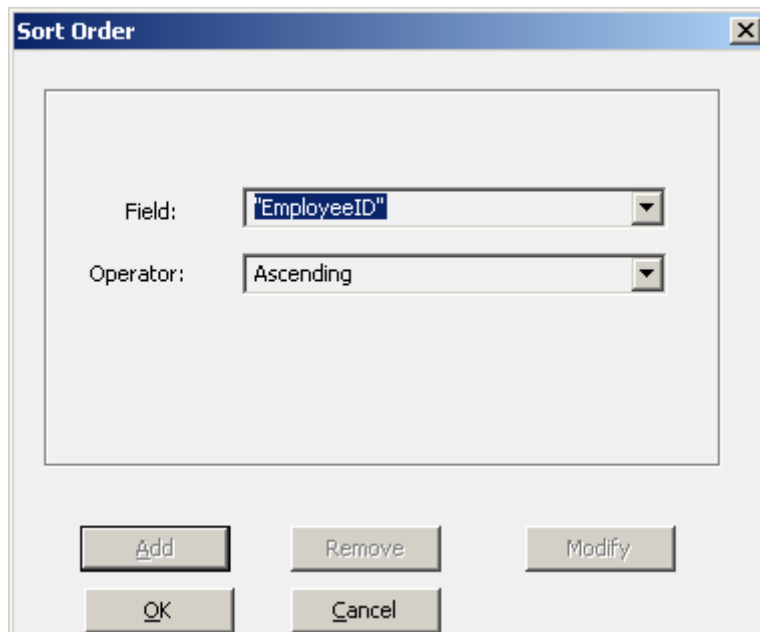
### 3.6.2 Applying Sort Orders

In [Fig. 4](#), click on "**Sort Order**" button, you will see following sort order dialog:



**Figure 11: Apply Sort**

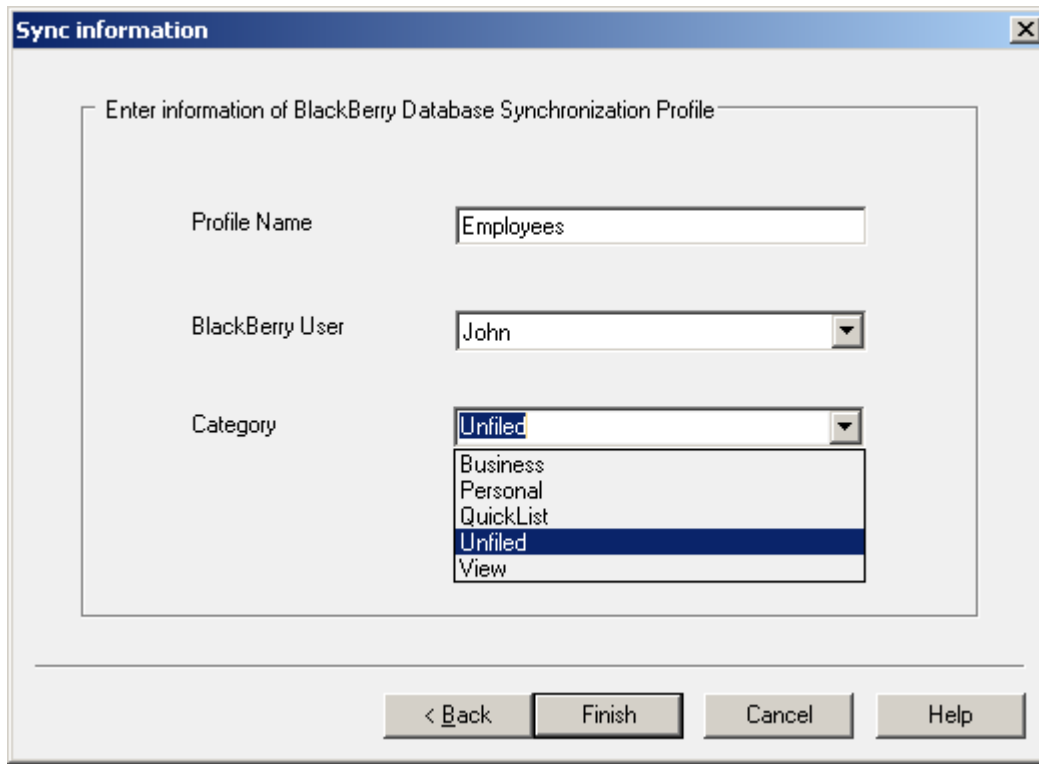
To add simply click on "**Add**" button.



**Figure 12: Sort Conditions**

Select sort order as "**Ascending**" or "**Descending**", select field from "**Available Fields**" popup.

### 3.7 Sync Information



**Figure 13: Sync Information**

Modify profile name. Select proper BlackBerry user for which you want to create database profile. Finally select Category.

Click on Finish to complete new profile creation. After finishing, you will get profile in left pane of DBViewerPlus. Click on profile, database content preview will be shown on right pane of DBViewerPlus window.

### 3.8 Modifying Existing Profile

#### 3.8.1 Renaming Profile

Select a Database Profile from left pane of DBViewerPlus. Click on "Edit" from Profile menu/toolbar/right click menu. You will be prompted to enter profile name. Enter new name and select "Change" button to rename profile.

#### 3.8.2 Rebuilding Query

Select a profile, expand it, and select "Query" property. Select edit from Profile menu or tool bar or right click on "Query" property, as shown below, and select "Rebuild...", you will get "Build Query" dialog, as that of in ["Table Selection/Query Building"](#) step.

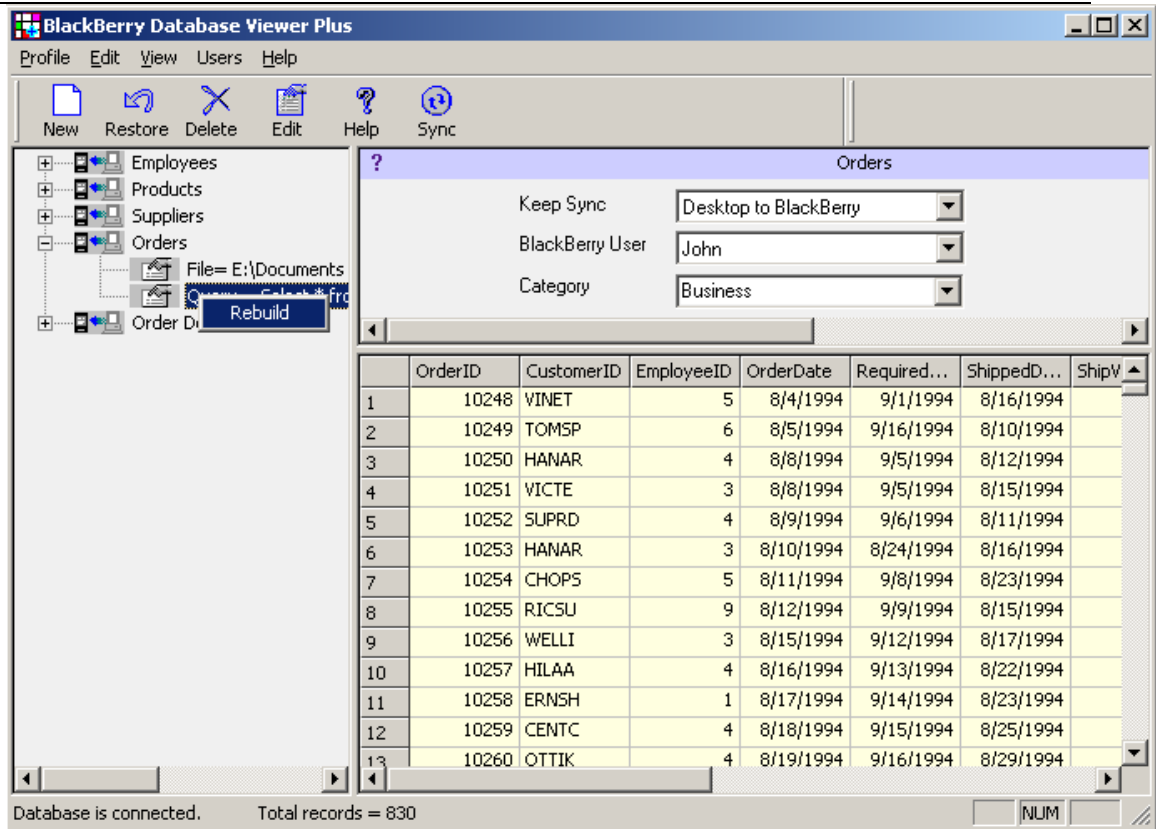
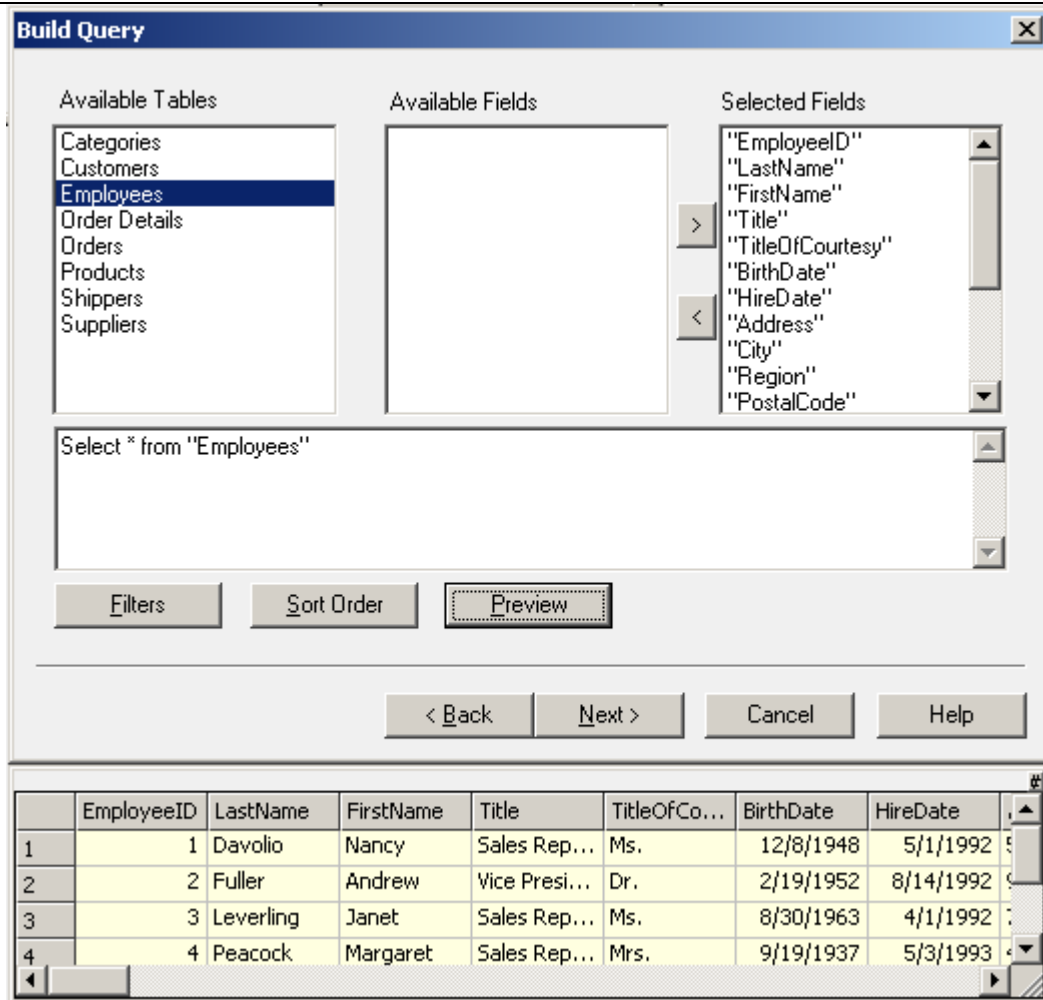


Figure 14: Update Query of selected Database



**Figure 15: Build Query**

From above "Build Query" dialog, you can modify table, Query, Filters and "Sort Orders". Refer ["Table Selection/Query Building"](#) step.

### 3.8.3 Modifying Sync Properties

Here, you can change type syncing. You can switch between "Desktop to BlackBerry" or " BlackBerry to Desktop" profile type. It will change way of data transfer. Select "Do not Sync", if you want to disable profile from syncing. You can change BlackBerry user for which profile is created.

### Deleting Profile

Select a profile, which you want to delete, from right pane of DBViewerPlus. Right click on it, and select **"Delete Profile..."** or from profile menu/toolbar select **"Delete"**. You will be confirmed about profile deletion. Deleting profile will also delete backup data taken by DBViewerPlus during syncing process.

### 3.9 CREATION OF CATEGORY

Category updation is possible at desktop. Use “Edit Categories” option from Category dropdown.

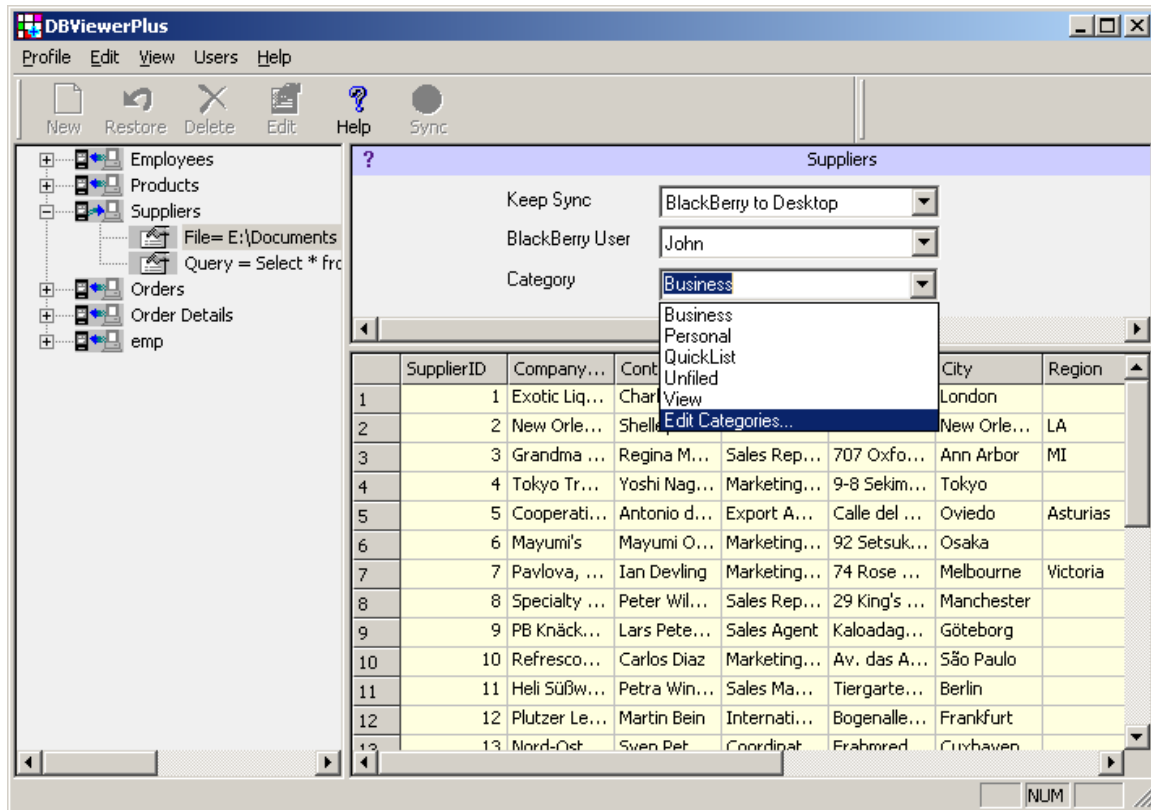


Figure 16: Category Creation

#### 3.9.1 Add/Delete/Rename Categories:

When you select “Edit Categories” option, you will get “Category” dialog box which will allow to Add new category, Delete category, Rename category. If you rename or delete any category then it won't affect categories available on BlackBerry.

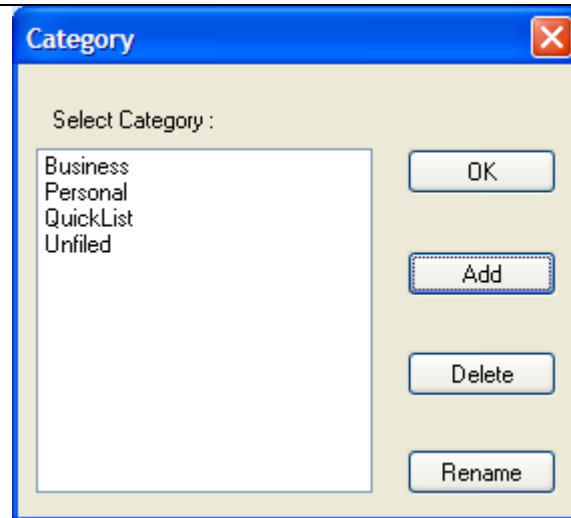
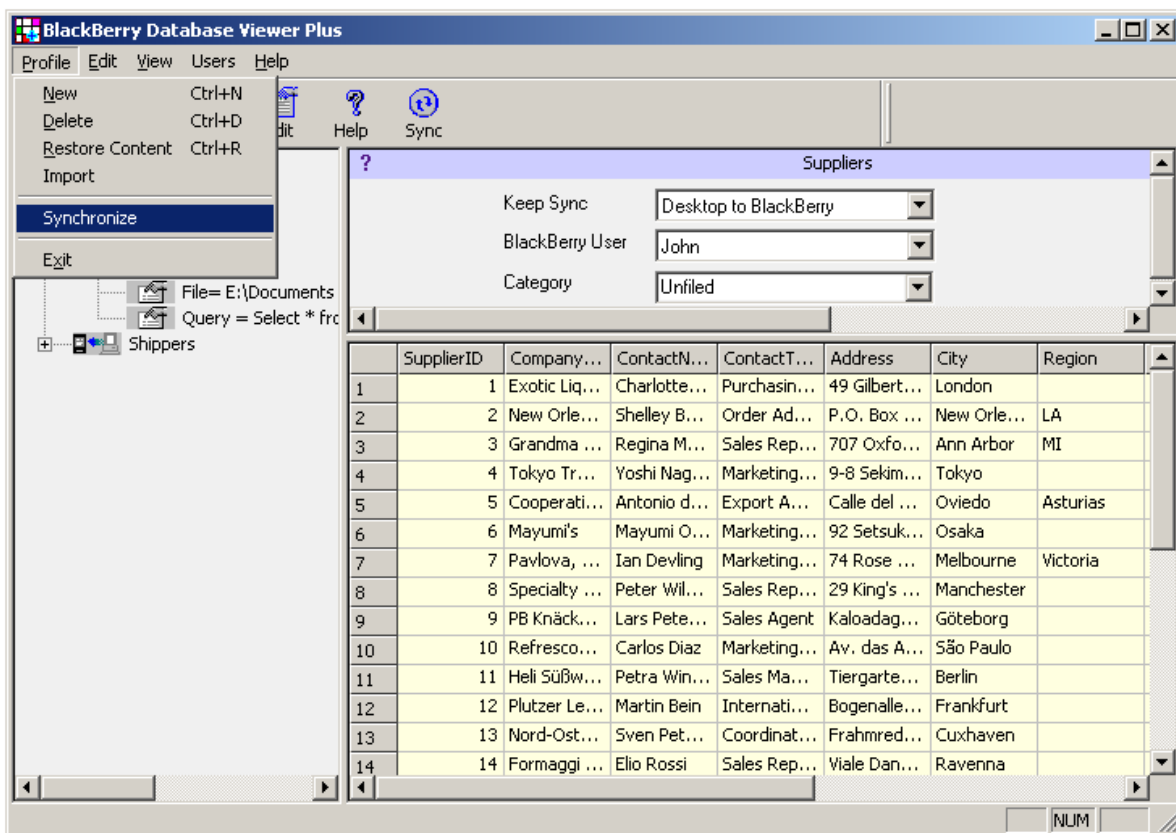


Figure 17: Edit Categories

### 3.10 Synchronize your Data



Once you create profile, Select the profile you want to synchronize, use menu **Profile->Synchronize** or **Sync** ToolBar button to perform the syncing according to **Keep Sync** option.

### 3.11 Taking Backup

Users need not to take explicit backup of particular database. "Desktop to BlackBerry" does not have a risk of losing desktop data, but for "BlackBerry to Desktop", there are chances of losing valuable desktop data. While syncing "BlackBerry to Desktop", DBViewerPlus takes backup of desktop data before transferring BlackBerry data into it. Backup of **last four syncing** is stored with DBViewerPlus. Refer "[Restore Data](#)" step for putting back this backup into original desktop database.

### 3.12 Restoring Data

Select a profile from DBViewerPlus. Right click on it and select "Restore Contents..." or from Profile menu/toolbar select "Restore Contents..". You will see dialog as of following:

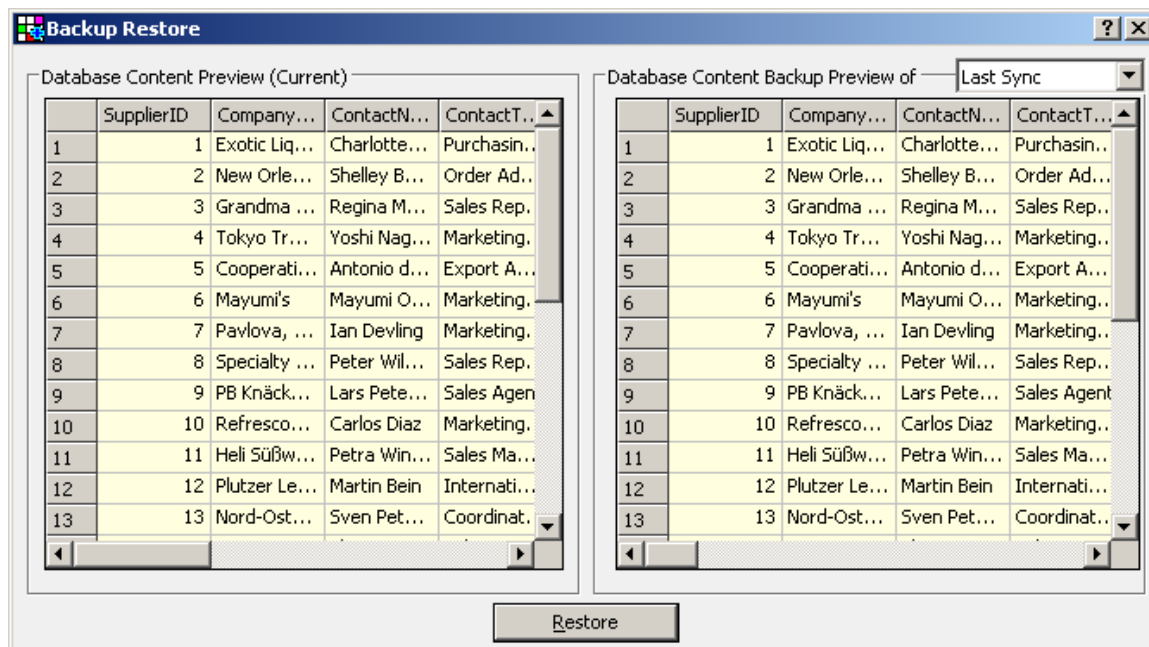
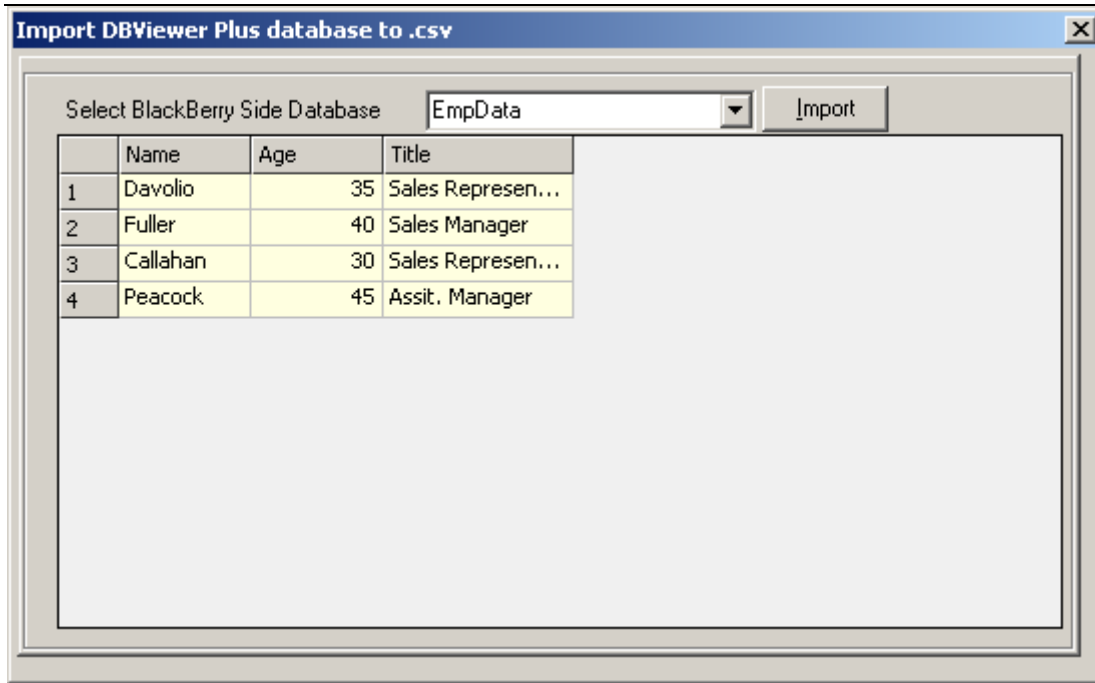


Figure 18: Restore Data

- In left pane of this dialog, you will see the current contents of desktop database. In right pane, you will see the backup contents. There are backup contents of last four syncing. Select appropriate backup form popup list. If you feel that you have lost some of your original data from original desktop database (left pane), select appropriate backup and click on "**Restore**" button. This will put backup data into original desktop database.

### 3.13 Import Data as a .csv

You can import BlackBerry side database to desktop in a .csv format.



**Figure 19: Import BlackBerry data as .csv**

Click on **Import** button to import it desired location.

## 4. USING THE DATABASE VIEWER PLUS ON THE BLACKBERRY

Now we will see, how to get and view the desktop database in BlackBerry DBViewer Plus.

After successful installation of "BlackBerry DBViewer Plus, on your BlackBerry Select Application - >Database Viewer Plus having icon and click on it and you will see screen like below:



**Figure 20: Registration Form**

Enter the registration key, you got from [www.cellica.com](http://www.cellica.com), into this Register dialog. Or just press Enter key to bypass it, which means that you are using DBViewer Plus application as an evaluation copy. You can invoke the Register dialog by selecting the Register menu option of the same screen.

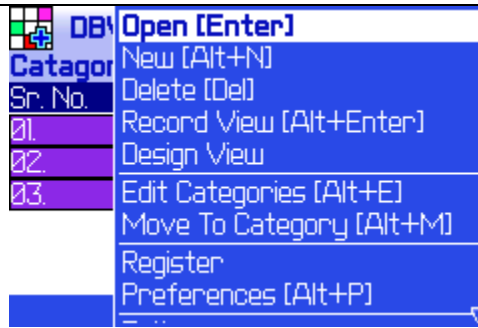
Note that, DBViewer Plus has one-day full evaluation and later allows working with 7 records. After registration, application will allow to work with the complete database.

Now the **DBViewer Plus** is ready for receiving and sending data for the selected desktop database, provided the USB cable is properly connected.

While data transfer is going on, the progress is shown in the status bar at the bottom of the screen. Mean while you won't need to wait for transfer process to be completed, you can simply do your work with **DBViewer Plus** with available databases. **DBViewer Plus** will acknowledge you about the success or failure of data transfer by showing the proper message.

**Note that, DBViewer Plus won't allow you to access the database one which is currently being transferred.**

### 4.1 View Database contents



**Figure 21: View Database Content**

Select one database name from the available databases and click the track-wheel to activate the menu. Choose the **Open** menu option, to view the selected database contents. **Or** you can use **Enter** key to view the selected database. Use “**Space**” or “**Alt + Track wheel**” to change the category and database will shown according to those category. Default category is “All”.

The database contents can be viewed in two modes: Grid and Record.

#### 4.1.1 Record View

**Employees: ( 9 )**

	Employ	LastNa	FirstNa	Title	Tit
1	1	Davolio	Nancy	Sales R	M
2	2	Fuller	Andrew	Vice Pr	
3	3	Leverlin	Janet	Sales R	M
4	4	Peacoc	Margar	Sales R	N
5	5	Buchan	Steven	Sales M	M
6	6	Suyama	Michael	Sales R	M

**Figure 22: Grid View**

**Employees** << < > >>

EmployeeID	1
LastName	Davolio
FirstName	Nancy
Title	Sales Represen
TitleOfCo	Ms.
BirthDate	1948.12.08
HireDate	1992.05.01
1/9	

**Figure 23: Record View**

## 4.1.2 Grid View

Employee:		Detail View [Alt+D]
	Employ	Record View [Alt+Enter]
1	1	Add Record [A]
2	2	Delete Record [Del]
3	3	Edit Field [Enter]
4	4	Find/Replace [Alt+S]
5	5	Call 1
6	6	To Memo Pad
		Math On Column

**Figure 24: Grid View with Menu Option**

In Grid View, you will be able to view database contents in Column view form. This has lots of features. There are various useful menu options on this screen:

- **Detail View** You can see the full contents of the selected field in the **Detail View** screen.
- **Add Record:** Add new record using this menu option. You can use **A** key as a shortcut key for this menu.
- **Delete Record:** Delete the selected record using this menu option. You can use **DEL** key as a shortcut key for this menu.
- **Edit Field:** Edit the selected record using this menu option. You can use **Enter** key as a shortcut key for this menu.
- **Find/ Find Next/ Find Replace:** are discussed in the next topic entitled as Search Contents. Use **Alt + S** as shortcut key to get this dialog.
- **Goto Record:** After selecting this menu option, it will show you the dialog that allows you to enter the record number where you want to jump. This results into jumping to the specified record number. Use **Alt + G** as a shortcut key to go to particular record.
- **Record View:** You can shift the **Single Record** view. You can use **ALT+Enter** key for this.
- **Call xxx:** You can even **make a phone call for the presently selected field's numeric contents**, which will be treated as phone number.
- **Copy/Paste/Eraser/Undo Field contents directly on Grid View:** This will allow you to easily copy/paste/delete complete contents of selected field.
  - **Cut:** You can cut the contents of current select field using **SHIFT+Delete** keys
  - **Copy :** You can copy the contents of current select field using **ALT+Click** keys.
  - **Paste:** You can paste copied data to particular selected field using **SHIFT+Click keys**.
  - **Eraser:** You can erase contents of current select field using **ALT+Delete**.
  - **Undo: Undo** last operation (Cut, Paste or Edit).

Note that, when you finished with a phone call, either press Escape key or ALT+Escape keys to come back to BlackBerry Database Viewer Plus.

Also note that, all the common menu options of the Grid view screen, will behave in the same manner in Record View also.

## 4.2 View a Field contents in Detail

This screen will show you all the contents of the selected field. It also facilitates you with **Find** and **Find Next** menu options to search the specified string to be searched within this field only. At each record found, it shows the found location in the status bar at the bottom of the screen.

This screen is shown as:



**Categories**.Description Sweet and savory sauces, relishes, spreads, and seasonings



Detail view

**Figure 25: Detail View**

## 4.3 Add Record

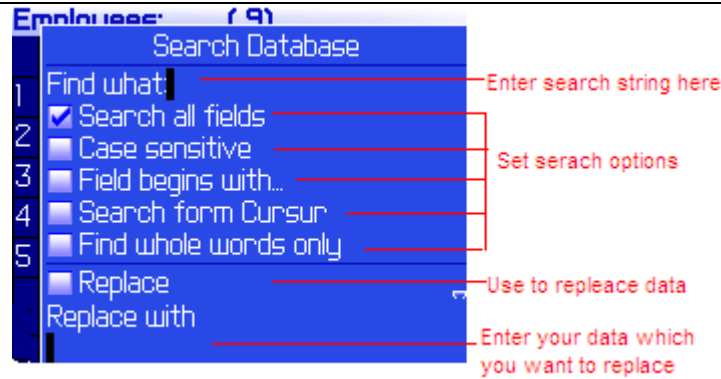
When you use Add Record option, New record will be added to your database at the end of the Grid View and Focus will be set on the first column of the newly added record. Use Edit menu ( Enter key) to edit value in that field. Similarly add data to other columns of this record.

## 4.4 Edit Record

Use this option to edit current field. You need this when add new record and want to update already existing records. You can use **Enter** key for same thing.

## 4.5 Search Database

To search a particular string within the selected database, you can use "Find" and "Find Next" menu options available in both "Grid" and "Single Record" view.

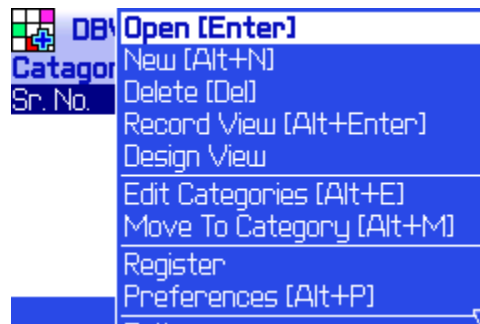


**Figure 26: Search Content**

Here while searching you need to enter a search string. You can search within all fields of a table or within a selected single field. Search may also be case sensitive. **Field begins with...** option searches specified string at the start of a field. You can search for numeric, string, date, time or any other type of field depending on its display format. Use **Find Next** menu option for next search. Use **ALT+S** to get this Search Dialog box. Use >> key to search next item. Use **Search from Cursor** to search data from the current selected location. Use **Replace** option to replace the data with a specific data,

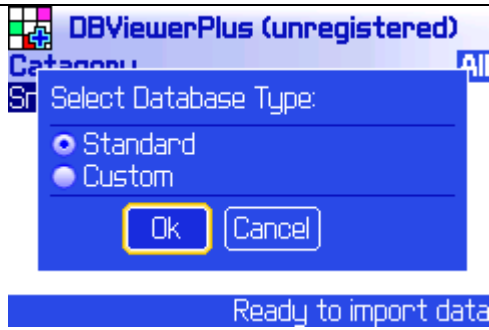
## 4.6 Create new database

You can create new databases on BlackBerry, **Standard** as well as **Custom**. Standard databases such as Credit card, Bank Information, Insurance are supported. Also you can get this database in .csv format on desktop side. When ever you select BlackBerry side created database from Desktop DBViewer Plus, you will be notified that database is created on BlackBerry and will be fetched in .csv format at the installation path of application.



**Figure 27: New Database Creation on BlackBerry**

When you click on **New** menu, you will get dialog, which will ask you to selected database type Standard or Custom.



**Figure 28: Standard or Custom Database**

If you select **Standard** Database then you will get a dialog, which will ask for selecting database from the list. Select the database you want. Application will create standard structure for selected database and you will be in Grid View. Use “Add Record “ menu to add data for selected standard database.

**Standard Database**

Sr.No.	Database Name
01.	Address Info
02.	American Express
03.	Bank Account
04.	Calling Card
05.	CheckBook info
06.	Vehicle Info
07.	Clothes Size

Select database type

**Figure 29: Standard Database List**

**Bank Account**

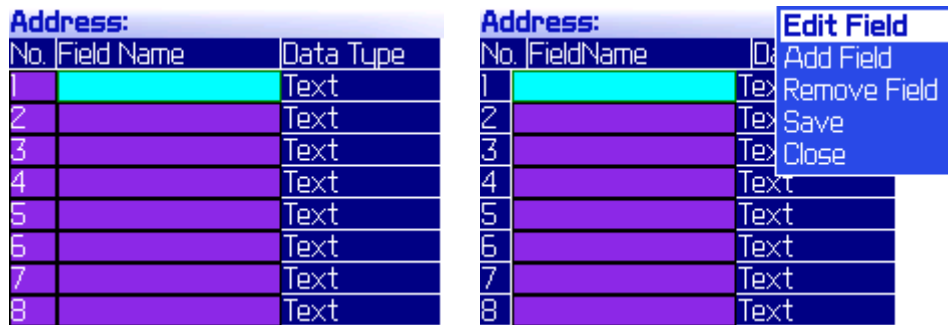
ViewList		Default View			
	Bank	Accoun	Type	PIN	So
1					

If you select **Custom** Database then you will able to create database as per your requirement. You will get following dialog after selecting Custom database.



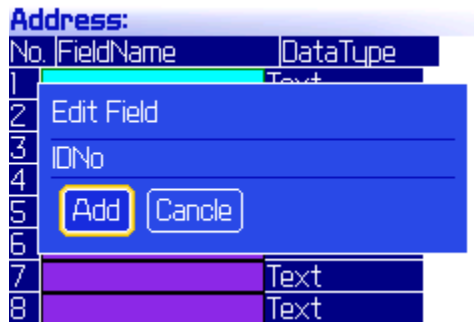
**Figure 30: Create Custom Database**

When you create new table, you need to create fields and their data types.



**Figure 31: Table Creation**

Use **Edit Field** menu to create Field name in new database. Software provides 8 default fields, you can add new fields using “Add Field” menu.



**Figure 32: Add Fields to Database**

Use **Change option** menu to change the Data type of specific field.

Address:

No.	FieldName	DataType
1	IDNo	Text
2		Number
3		True/False
4		Date
5		Time
6		Date/Time
7		Text
8		Text

**Figure 33: Edit Datatype of columns of New Table**

There 6 Data types available which will help you to create your database.

When you finish table creation process, you will be ask for **Category** for this newly created database.

Address:

No.	FieldName	DataType
1	IDNo	Number
2	Select Category	
3	Category	Personal
4	Ok Cancel	
5		
6		
7		
8		

**Figure 34: Create Category to new Database.**

Use “Space Bar” or “Alt + Track Wheel” to change the category

After completion of database creation you will be ask to create database, Create database using “**Add Record**” menu and “**Edit Field**” menu or **Enter** key to edit the data in newly added Record.

Employee:		Record View [Alt+Enter] ▲		Address: (1)	
	Employ	Add Record [A]		IDNo	Name
1	1	Delete Record [Del]			
2	2	Edit Field [Enter]			
3	3	Find/Replace [Alt+S]			
4	4	Call 1			
5	5	To Memo Pad			
6	6	Math On Column			
		Cut [Shift+Del] ▼			

Address:	
IDNo	Name
1	Name(): John
Ok Cancel	

**Figure 35: Add Records to new Database**

## 4.7 Create Views

You can create different views of your transferred database on BlackBerry by applying Filter and Sort. In Grid View or Record View, in upper right corner there is “Default View”, Use “Alt” button or Press Trackball to change/edit/create new view. Use “Edit Views” option to create edit the selected view or create new view.

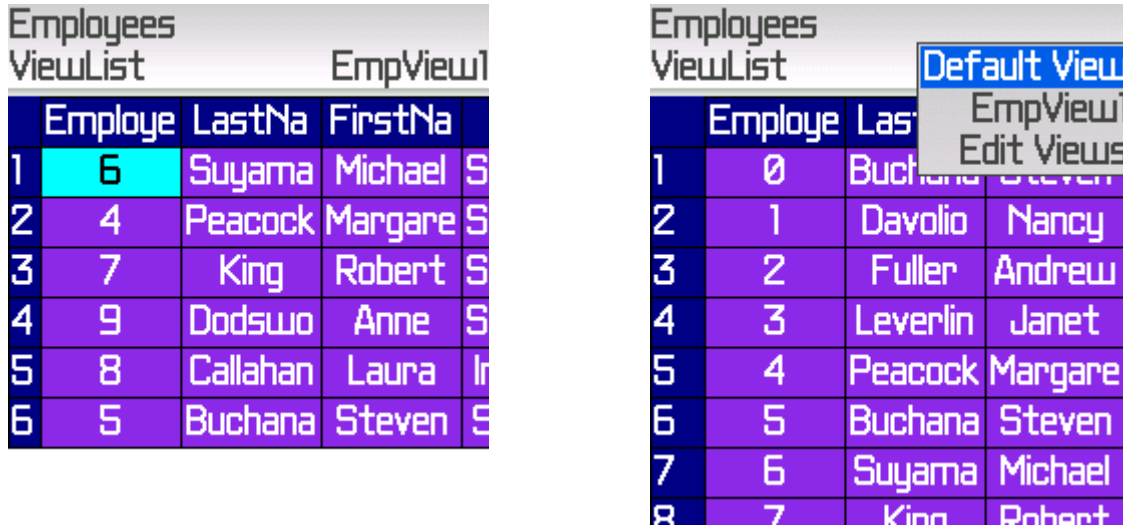


Figure 36: Create and Change Views

You will get a form where list of created views will be available. To create new view use “Create New View” menu.



Selected database: Employees

Selected database: Employees

Figure 37: Create New View

After clicking on “Create New View” menu, you will get following form. Here enter the name of View. And Use “Apply Filter” or “Apply Sort” or “Select Fields” menu to apply Filter or Sort or select field of your choice on selected database.



**Figure 38: Add Filter/Sort in View**

### 4.7.1 Apply Filter

When you will select “Apply Filter” button, you will get following dialog. Use “Add Condition” menu to add the Filter condition on particular column. Use “Alt” menu or Press Trackball to change the Column Name or Filter Operator (RO)/Logical Operator(LO). Use “Enter” button to enter the value for Filter. Use “Add Condition” menu to apply more filters.



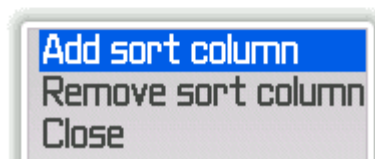
**Figure 39: Apply Filter in View**

## 4.7.2 Apply Sort

When you will select “Apply Sort” button, you will get following dialog. Use “Add Sort Column” menu to apply sort on selected database on particular column. Use “Alt” button or Press Trackball on BlackBerry to change the Column name or order of Sorting.

Add/remove sort column		
SNo.	ColumnName	Order
1	LastName	desc

Add/remove sort column		
SNo.	ColumnName	Order
1	LastName	desc



**Figure 40: Apply Sort in View**

Now when you will leave this form, it will ask to save the applied Sort.

## 4.7.3 Select Field of your choice

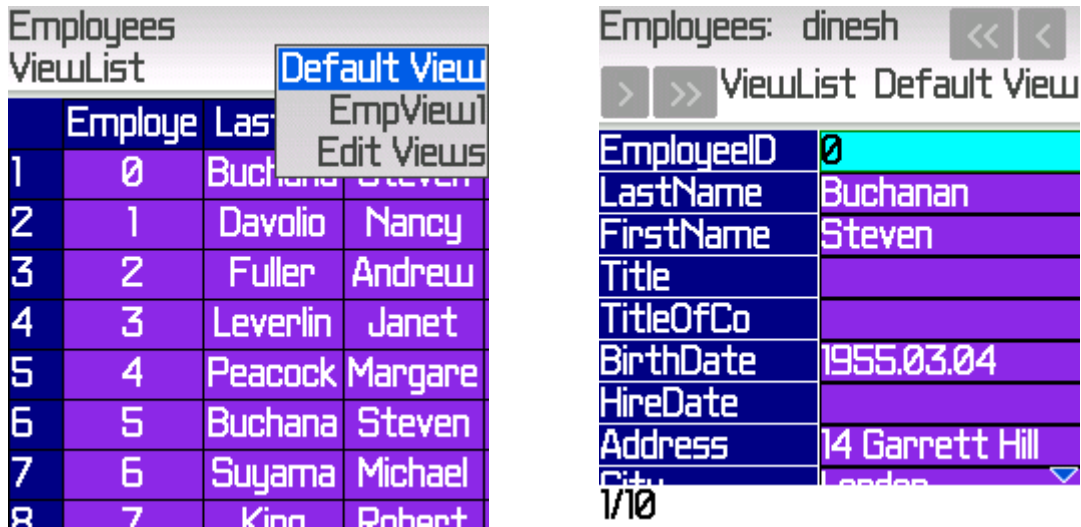
You can choose the columns for your view. Use Space button or Trackball to select/deselect the fields.

Select required Fields		
SNo.	ColumnName	
1	EmployeeID	<input checked="" type="checkbox"/>
2	LastName	<input checked="" type="checkbox"/>
3	FirstName	<input checked="" type="checkbox"/>
4	Title	<input type="checkbox"/>
5	TitleOfCourtesy	<input type="checkbox"/>
6	BirthDate	<input checked="" type="checkbox"/>
7	HireDate	<input type="checkbox"/>
8	Address	<input checked="" type="checkbox"/>
9	City	<input checked="" type="checkbox"/>
10	Region	<input checked="" type="checkbox"/>

Figure 41: Select Field for View

#### 4.7.4 Change the View.

You can change the view from Grid View or Record View. In both the view, in right corner you will get “Default View” label. Set Focus on it and use “Alt” button to change the view.



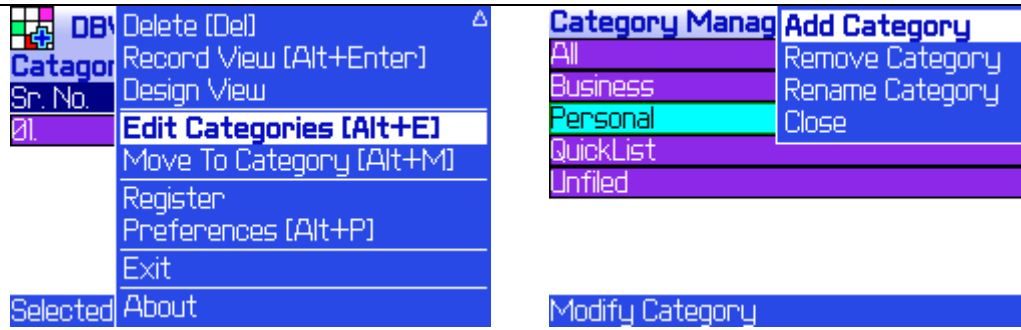
EmployeeID	LastName	FirstName	Title
0	Buchanan	Steven	
1	Davolio	Nancy	
2	Fuller	Andrew	
3	Leverlin	Janet	
4	Peacock	Margare	
5	Buchana	Steven	
6	Suyama	Michael	
7	King	Robert	

EmployeeID	LastName	FirstName	Title	TitleOfCo	BirthDate	HireDate	Address	City
0	Buchanan	Steven			1955.03.04		14 Garrett Hill	London

Figure 42: Change View

### 4.8 New Category Creation

Create new category using **Edit Categories** menu. You can Add/Remove/Rename categories there. You can move particular database to specific category using **Move to Category** menu.



**Figure 43: New Category creation on BlackBerry**

## 4.9 EXPORT RECORD/FIELD DATA TO MEMO PAD

You can transfer selected record or field data to Memo Pad application of Blackberry. Just select field and use To “**Memo Pad**” menu. This will take you to another dialog box, which will ask your choice for transfer of Field / Record data **and** with field/Without Field Name to Memo pad.

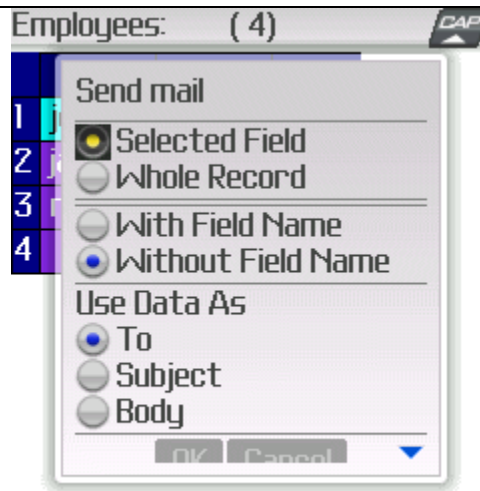


**Figure 44: Transfer data to Memopad**

When you Press **Ok** button, it will take to you “**Memo Pad**” application. Here create new Memo and in new Memo you will have “**Paste**” to paste the selected data.

## 4.10 Send Message

If you would have **BlackBerry having OS 4.2 or above** . then "**Message**" Menu, which will launch following form from a record containing an email address or any data. You can send selected field or record data to an **Email client** directly. This form allows to select **To: field/ Subject: field/Body: field** with selected **Field/Record** with **Field Name** or **Without Field Name**.



**Figure 45: Export Data to Email client**

## 4.11 Customization

**Record View:** You can set record view option which will be get into effect while opening the selected database.

**Date Format:** You can customize the way date fields are shown.

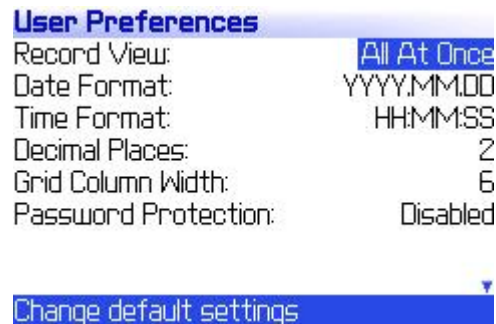
**Time Format:** You can customize the way time fields are shown.

**Decimal Places:** You can even set the number of decimal places to be displayed, from **Decimal Places** option.

**Grid Column Width:** You can also resize the width of the column in grid view, from **Grid Column Width** option.

Select any one option to customize and choose the **Change option** menu option to change it.

The Preference screen is shown as:



**Figure 46: Preferences**

Please note that, if you forget the password, there is no way to recover it. Hence, it should be remembered.

## 5. BLACKBERRY KEYPAD SHORTCUTS

### 5.1 Screen : Homescreen

Keystroke	Action Taken
Enter	<b>Open</b> the selected database.
Delete	<b>Prompt to Delete</b> the selected database.
Alt+P	Jump to <b>Preference</b> screen.
Alt + N	Create new database.
Alt + M	Move database to specific category.
Alt + E	Edit Categories
Space <b>or</b> Alt + TrackWheel	To change the category

### 5.2 Screen : Grid Screen and Record View Screen

Keystroke	Action Taken
Alt+Delete	<b>Erase</b> selected cell contents.
Shift+Delete	<b>Cut</b> selected cell contents.
Alt+Click	<b>Copy</b> selected cell contents.
Shift+Click	<b>Paste</b> selected cell contents.
Alt+Z	<b>Undo</b> last operation (Cut, Paste or Edit).
Enter	<b>Edit</b> selected cell contents.
Alt+Enter /Space for Pearl	Jump to <b>other view</b> screen. (i.e. GridScreen to RecordViewScreen and vice-a-versa.)
Escape	<b>Close</b> view screen.
Alt+D	Jump to <b>Detail</b> view screen.
Alt+P	Jump to <b>Preference</b> screen.
Alt+G	Pop up <b>Goto</b> dialog.
E	Move to <b>First record</b> .
U	Move to <b>Previous record</b> .
M	Move to <b>Next record</b> .
C	Move to <b>Last record</b> .
D	Move to <b>First column</b> .

J	Move to <b>Last column</b> .
Alt+S	Pop up <b>Search</b> dialog.
* (Next)	<b>Search Next</b> item.
A	<b>Append new record</b> .
Delete	Prompt to <b>Delete</b> selected record.

### 5.3 Screen : Detail View Screen

Keystroke	Action Taken
Alt+S	Pop up <b>Search</b> dialog.
* (Next)	<b>Search Next</b> item.
Alt+P	Jump to <b>Preference</b> screen.

## 6. FREQUENTLY ASKED QUESTIONS

---

Frequently Asked Questions (FAQ) are questions that our customers routinely ask us or email about. We divided FAQs in two different sections.

(For more queries, refer product documentation and tips.)

### 6.1 BlackBerry

**1. I AM HAVING PROBLEM INSTALLING BLACKBERRY COMPONENT OF DATABASE VIEWER PLUS SOFTWARE. I HAVE DOWNLOADED THE BBDBVIEWERPLUSSETUP.EXE FOR INSTALLATION. AFTER THAT, I'VE RUN THE APPLICATION LOADER OF BLACKBERRY DESKTOP MANAGER. BUT BBDBVIEWERPLUS WILL NOT INSTALL ON THE BLACKBERRY DEVICE. WHAT SHOULD I DO TO INSTALL IT?**

First of all, run the downloaded setup file & install the application at the suitable location on local hard disk. Now, run the Desktop Manager (note that, it should be **BlackBerry Desktop Manager 4.0**), & follow the on-screen instructions. Specify the path at which you have already installed the BlackBerry DBViewerPlus application, at this path there is folder **BlackBerry DBViewer Plus**, as the response to the **Add...** button. Select the **dbviewerplus.alx** file. Once again follow the rest of the on-screen instructions.

**2. IS EVALUATION COPY IS FULL FLESH VERSION? ARE ANY FEATURE DISABLE IN EVALUATION?  
OR  
WHAT ARE LIMITATIONS IN EVALUATION VERSION?**

Evaluation copy is full flesh version. Only limitation is that, you can use it with complete database for one day later you are allowed to access/view 7 records only for each database.

**3. I PUT IN THE REGISTRATION KEY TO THE BLACKBERRY DATABASE VIEWER PLUS APPLICATION AND IT SAYS INVALID REGISTRATION KEY.**

We generate the registration key based on your "Device ID ( i.e. PIN)". It is case sensitive. The Register dialog appears each time application starts, if you are unregistered user. You can even invoke the same Register dialog by selecting the **Register** menu option from the home screen of Database Viewer Plus application. On BlackBerry handheld, you can register Database Viewer Plus at any time by entering the registration key that you have got & just press the **Enter** key.

**4. I HAVE TRIED TO TRANSFER THE DESKTOP DATA TO MY BLACKBERRY HANDHELD, BUT AFTER SOME TIME THE BLACKBERRY DATABASE VIEWER PLUS APPLICATION CLOSED DOWN, WHAT'S WRONG WITH IT?**

This situation is occurred when you don't have enough free space available on your device. Under such situation, the device shuts down itself. Nothing is wrong at all. At the same time, the proper error message will be displayed on the desktop application, which describes the situation. Make some space available on your BlackBerry device by either deleting the old databases from this application, or delete the old e-mails, entries of Memo Pad etc. And, rerun the both the applications & do the same procedure again.

**5. I HAVE ENTERED THE DATA IN ANY OF THE FIND DIALOG, GOTO DIALOG, OR REGISTER DIALOG & THEN CLICKED THE TRACKWHEEL, HOWEVER THE ENTERED DATA IS NOT ACCEPTED?**

Just press the **Enter** key. And, it will work fine.

**6. I COULD NOT SEE THE ENTIRE CONTENTS OF THE SELECTED FIELD. WHAT CAN I DO?**

In Grid View, you can change the Column Width, by changing the **Grid Column Width** option in **Preferences**, so as to see more contents of the selected field. However, in order to view the entire contents for the selected field, you can select the **Detail View** menu option from either Record View or Grid View screen.

## 6.2 Desktop

**1. I HAVE TRIED TO TRANSFER THE DESKTOP DATA TO MY BLACKBERRY HANDHELD, BUT NOTHING IS HAPPENING, WHAT TO DO?**

You have to wait until all the contents of the selected database will be transferred to your BlackBerry device. If any problem occurred during this process, then proper error message will be displayed. Else, the message indicating the success of data transfer, will be shown.

---

## 7. SUPPORTED DATA TYPES

---

- Currently BlackBerry Database Viewer Plus supports following data types.
- Memo, Char, VarChar, VarChar2
- Number of type: Byte, Decimal, Integer, Long Integer, Single, Real, Float, Double
- GUID
- Date/Time
- AutoNumber of type: Long Integer
- Yes/No
- Hyperlink
- Currency

---

## 8. CONTACT US

---

You can use the following email addresses to contact us:

- Product support  
[support@cellica.com](mailto:support@cellica.com)