

**WIRELESS DATABASE VIEWER PLUS FOR S60 3RD AND 5TH EDITION
PHONE:
USER GUIDE**

PRODUCT VERSION: 1.0

CONTENTS

1	INTRODUCTION.....	3
1.1	FEATURES	3
2	INSTALLATION.....	4
2.1	DESKTOP INSTALLATION.....	4
2.2	SYMBIAN PHONE INSTALLATION:	8
2.2.1	<i>Manual Installation.....</i>	8
2.2.2	<i>Wireless Installation</i>	9
3	USING THE WIRELESS DATABASE VIEWER PLUS ON THE DESKTOP	10
3.1	PROFILE MANAGER.....	10
3.1.1	<i>Selection of File base and DSN base database.....</i>	11
3.1.2	<i>File Based Database</i>	12
3.1.3	<i>DSN based Database</i>	15
3.1.4	<i>Applying Filters</i>	16
3.1.5	<i>Apply Sort.....</i>	18
3.1.6	<i>Apply Column Sequence:</i>	19
3.1.7	<i>Select Location of Database on Symbian Phone</i>	19
3.1.8	<i>Selection of Stored Procedure</i>	19
3.2	PREFERENCES	22
4	USING THE WIRELESS DATABASE VIEWER PLUS ON THE SYMBIAN PHONE	25
4.1	PROFILE LIST ON SYMBIAN PHONE	25
4.2	MENU ON PROFILE LIST	26
4.3	VIEWS AVAILABLE ON SYMBIAN PHONE	27
4.3.1	<i>Multiple Record View and Single Record View.....</i>	27
4.4	SEARCH CONTENTS.....	30
4.5	PREFERENCES	31
5	FREQUENTLY ASKED QUESTIONS.....	34
5.1.1	<i>Does software send complete database every time?.....</i>	34
5.1.2	<i>Is my database secured?</i>	34
5.1.3	<i>What is evaluation period of this software?</i>	34
5.1.4	<i>How can I sync my database automatically?.....</i>	34
5.1.5	<i>How can I synchronize data automatically?.....</i>	35
5.1.6	<i>What time I can set for automatic synchronization?</i>	35
5.1.7	<i>Whenever I add/edit/delete record on Symbian Phone, in Record view I get Red/Cyan color. ...</i>	35
6	SUPPORTED DATA TYPES	37
7	SYSTEM REQUIREMENT	38
8	CONTACT US	39

LIST OF FIGURES

Figure 1: Installation Start.....	4
Figure 2: Select Edition.....	5
Figure 3: Symbian Phone IMEI	6
Figure 4: Installation Path	7
Figure 5: Finish Setup	8
Figure 6: Profile Manager	10
Figure 7: Database Selection.....	11
Figure 8: File Based Database Selection.....	12
Figure 9: Excel Selection	13
Figure 10: DSN Database Selection.....	15
Figure 11: Table selection.....	16
Figure 12: Apply Filter	17
Figure 13: Apply Sort	18
Figure 14: Arrange Columns.....	19
Figure 15: Select DSN of Stored Procedure	20
Figure 16: Selection of Stored Procedure	21
Figure 17: Enter Parameter Values for Stored Procedure	22
Figure 18: Preferences available on Desktop side DBViewer Plus	22
Figure 19: Synchronization Settings	23
Figure 20: Registration of Wireless Database Viewer Plus	24
Figure 21: Database List on Symbian Phone	26
Figure 22: Menu on Profile List.....	26
Figure 23: Multiple Record View and Single Record View	28
Figure 24: Menu available on Multiple Record View and Single Record View	29
Figure 25: Search Data.....	31
Figure 26: Preferences	32
Figure 27: Registration dialog.....	34
Figure 28: Status of updated record	36

1 INTRODUCTION

Being away from your office does not mean not having the access to your data. Consider the scenario when you want to carry a copy of the database on your Symbian phone, update the data and send updated data from Symbian Phone to original database on PC. Now it is possible with the Wireless Database Viewer Plus. Wireless Database Viewer Plus for Symbian Phone allows you to be more productive by allowing you to view and update the database contents on your Symbian Phone. Wireless Database Viewer Plus for Symbian Phone allows to sync with Microsoft Access, Microsoft Excel, FilePro and any ODBC Compliant database like Oracle, SQL Server, etc. The software package consists of two software: the Wireless DBViewer Plus Desktop (Server) that runs on Microsoft Windows, and Wireless DBViewer Plus (Client) that run on the Symbian Phone. Use the Desktop side software to create the database profiles (make the list of database) for Symbian Phone and data will be synchronized with Symbian Phone after using “Sync” menu or with “AutoSync” option available in WDBViewerPlus software on Symbian Phone. After Synchronization, Wireless DBViewer Plus on Symbian Phone will receive these profiles and data respectively, and you can view and update the contents of the database.

1.1 Features

- Synchronize data **Wirelessly** with Symbian S60 3rd and 5th Edition Phone.
- View and update data on Symbian Phone, which will reflect to Server database immediately.
- Synchronize only updated desktop data to Symbian Phone automatically.
- Apply SQL Select queries, Filters, Sort the fields and Push data according to it.
- Supported Databases: MS Access, MS Excel, FileMaker Pro, Oracle, SQL Server, FoxPro, dBase and any **ODBC Compliant Database**.
- Make a phone call for the selected field's numeric contents, which will be treated as a phone number.
- Find and Find again option to search a record.
- Easy navigation in both Record and Grid view using shortcut keys.
- Data is secured as 128 bit AES use for Encryption.
- Supports Unicode language database such as Japanese, Chinese, Korean, and Russian etc.
- Transfer data to SD Card.

2 INSTALLATION

This software needs to install two components. Install one component on your windows base Personal Computer (Desktop Installation) and another component on Symbian Phone.

2.1 Desktop Installation

Download [S60WirelessDBViewerPlus.exe](#) setup file on your PC.

Please make sure that Internet is available on the PC.

Run this **S60WirelessDBViewerPlus.exe** Setup file, this will show following screen.

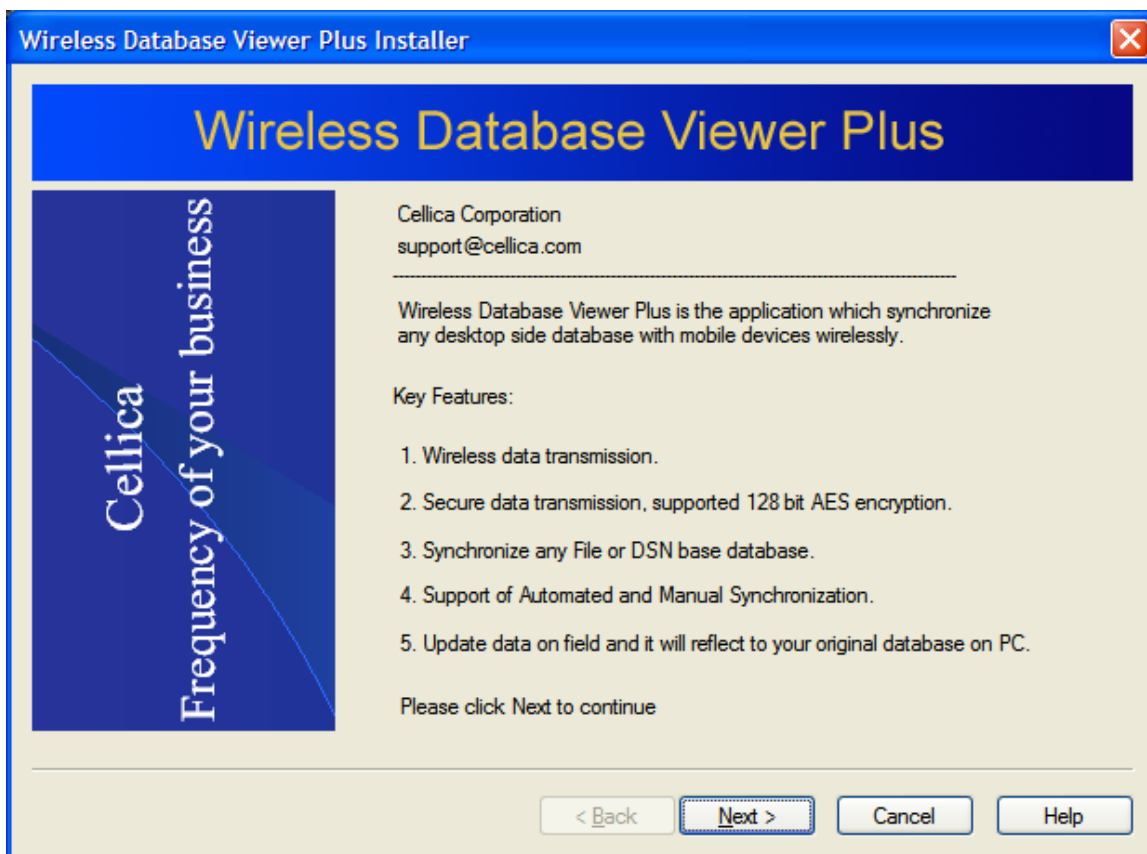


Figure 1: Installation Start

Select Personal Edition to install software for individual user. For corporate edition Please contact us at sales@cellica.com

Now “Personal Edition” is default option. This is for individual user, who wants to synchronize data with single Symbian Phone. Corporate edition is available for users who want to synchronize data for more than one mobile device. Corporate version allows synchronizing single desktop side database with number of BlackBerry, iPhone, Symbian S60 Phone, Pocket PC Phone. For corporate edition, please contact us at sales@cellica.com

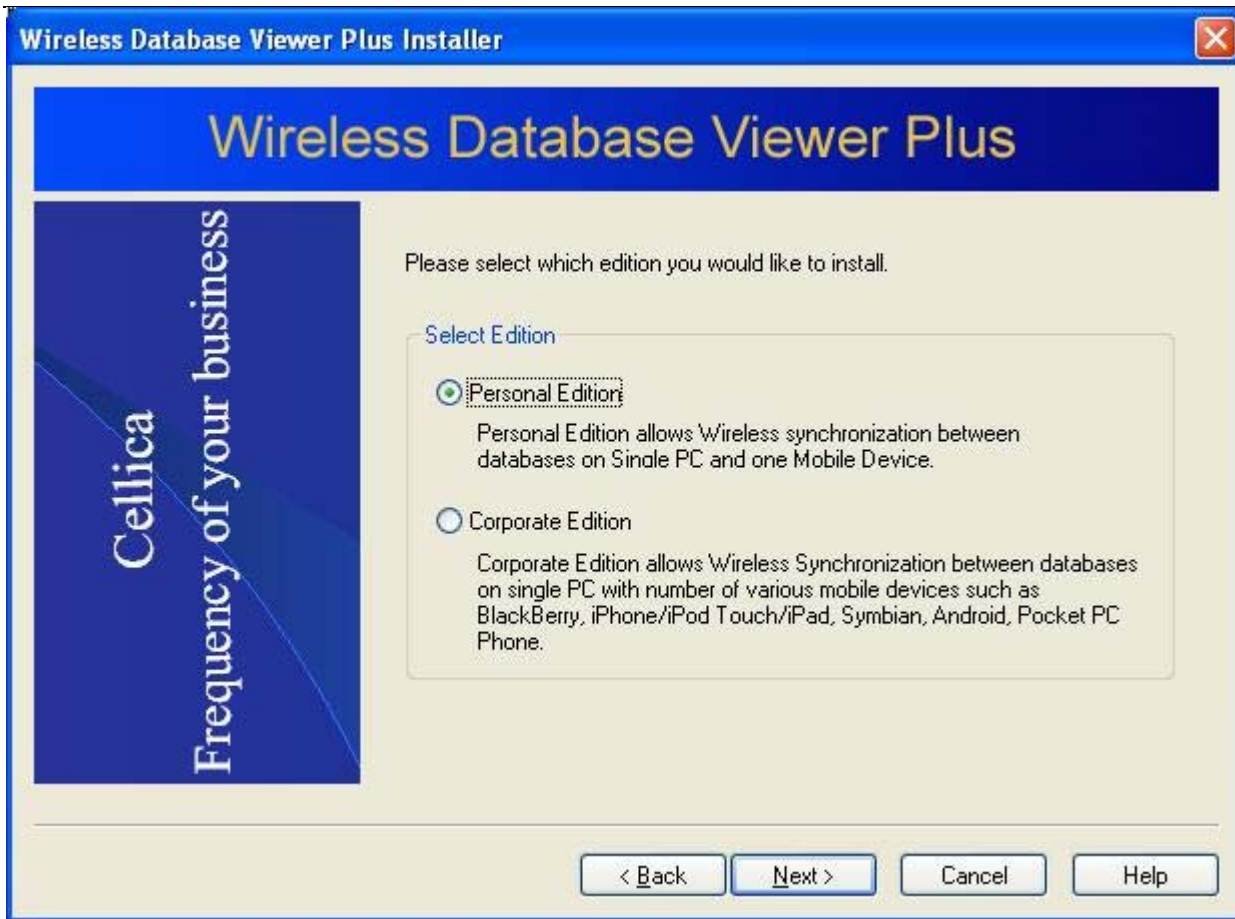
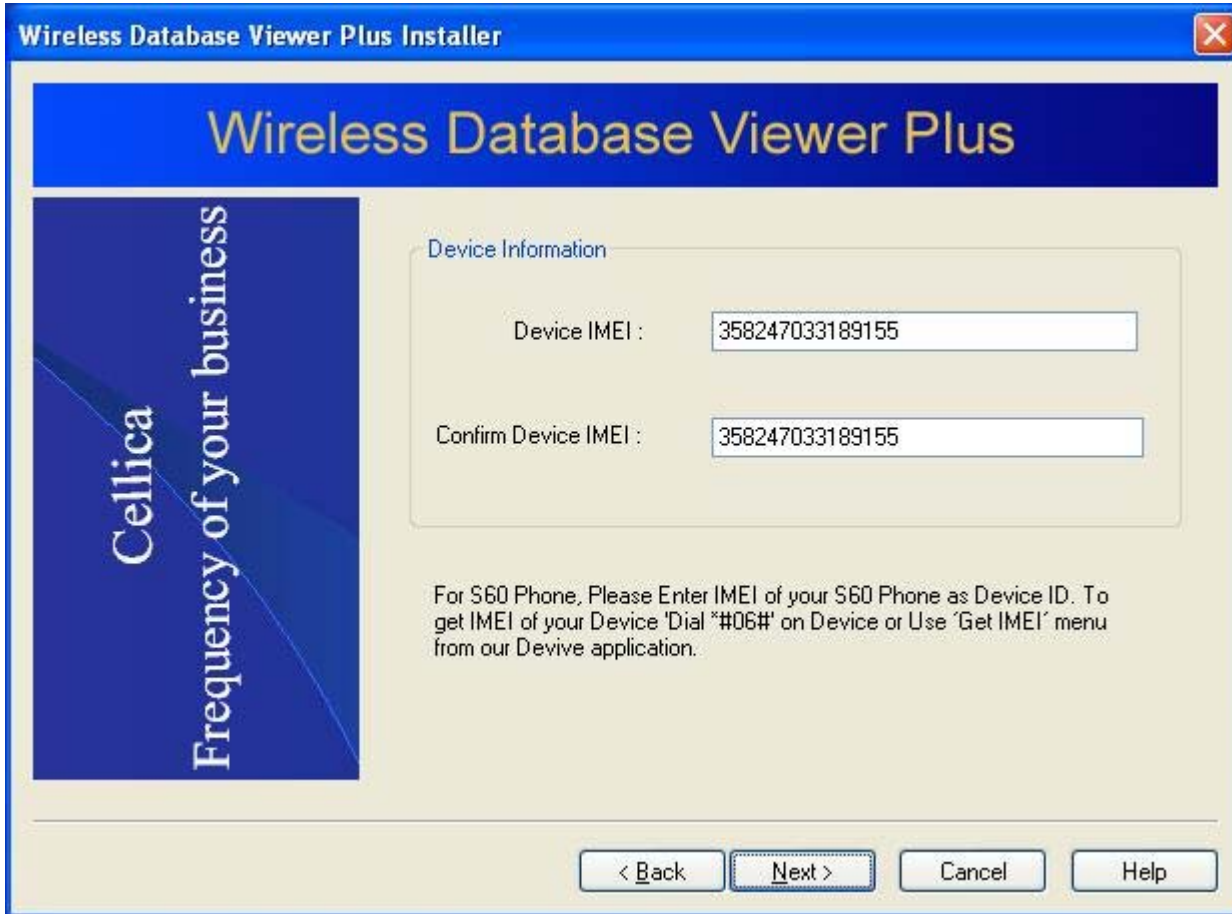


Figure 2: Select Edition

After selection of Personal Edition, Enter IMEI of your Symbian Phone in **Device IMEI** and **Confirm Device IMEI** field. You can get IMEI on Symbian Phone by Dialing *#06#



Wireless Database Viewer Plus Installer

Wireless Database Viewer Plus

Device Information

Device IMEI : 358247033189155

Confirm Device IMEI : 358247033189155

For S60 Phone, Please Enter IMEI of your S60 Phone as Device ID. To get IMEI of your Device 'Dial *#06#' on Device or Use 'Get IMEI' menu from our Devive application.

< Back Next > Cancel Help

Figure 3: Symbian Phone IMEI

Once you enter above information, in next installation step, select the installation path for this software on your Personal Computer.

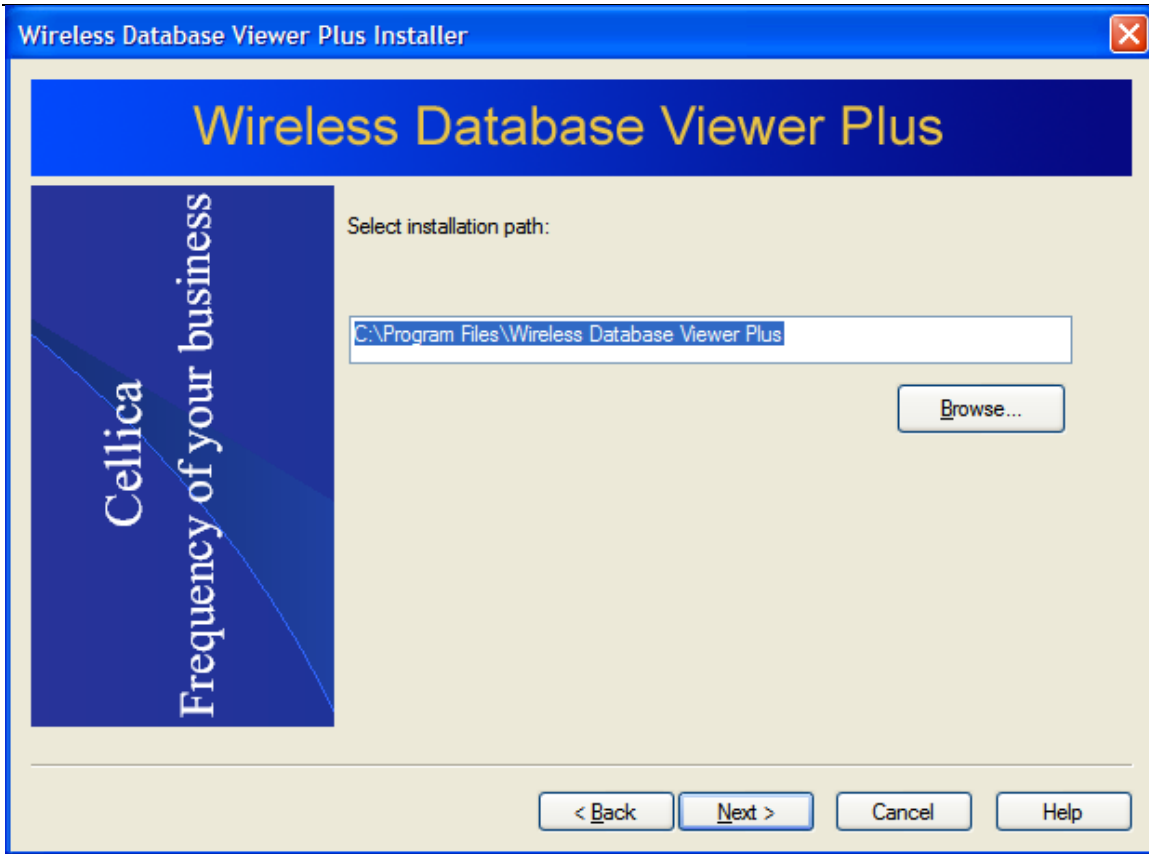


Figure 4: Installation Path

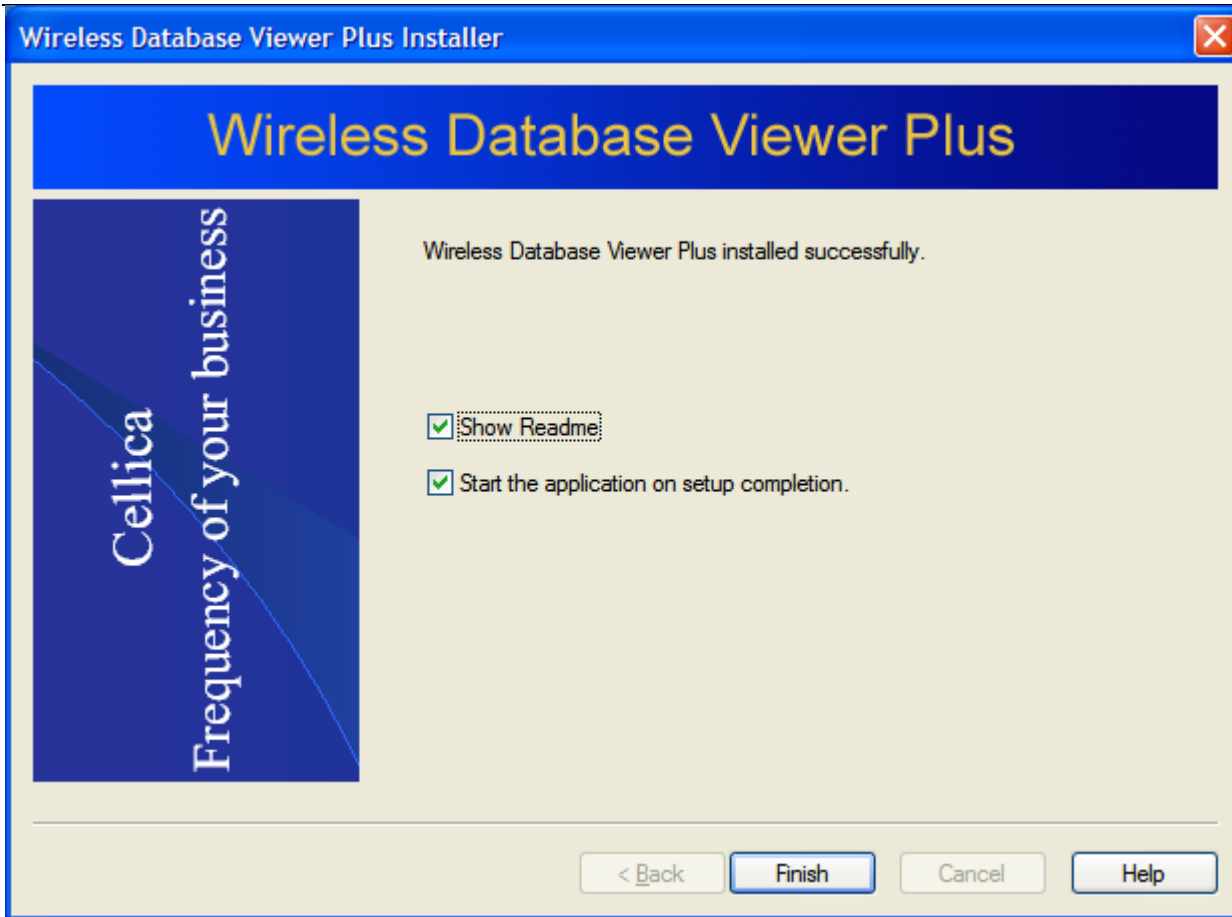


Figure 5: Finish Setup

After successful installation of the software on PC, installation location path will have **Wireless Database Viewer Plus folder** contains **Desktop Files** folder. **Desktop Files** contains **WDBViewerPlus.exe** and other files required for this software. Shortcut for **WDBViewerPlus.exe** and **User Guide** is available on your desktop.

2.2 Symbian Phone Installation:

Please install WDBViewerPlus.sisx application on the Symbian Smart phone.

2.2.1 Manual Installation

At installation path **Wireless Database Viewer Plus** folder contains **Device Installation Files** folder. This folder contains WDBViewerPlus.sisx file, use PC Suite to install it on Symbian Phone.

2.2.2 Wireless Installation

To install software on Symbian Phone wirelessly, Use the following link in the Browser on Symbian Phone. Select WDBViewerPlus in following page and it will install software on your Symbian phone.

<http://www.cellica.com/OTA/s60wdbvp.asp>

Now you are ready to use Wireless DBViewer Plus software.

Important: Install Wireless Database Viewer Plus software on the PC on which internet is available.

3 USING THE WIRELESS DATABASE VIEWER PLUS ON THE DESKTOP

This section will explain how to use **Wireless Database Viewer Plus** software on the PC.

Run **WDBViewerPlus** from the shortcut available on the desktop, or use Start Menu: **Start->Programs->Wireless Database Viewer Plus->Wireless Database Viewer Plus**.

There are two modules available here.

1. Profile Manager
2. Preferences.

3.1 Profile Manager

Use **Profile Manager** to add profiles (list of database) for your Symbian Phone. Use Add Profile/Remove Profile buttons to update the profiles list.



Figure 6: Profile Manager

Use **Add Profile** button to select the database, which you want to synchronize with Symbian Phone. On clicking “Add Profile” button, you will get “New Profile: Database Connection” dialog.

3.1.1 Selection of File base and DSN base database.

Select the database, which you want to synchronize with Symbian Phone. User can select File based as well as DSN based database. Apply Filter/ Sort for selected tables.

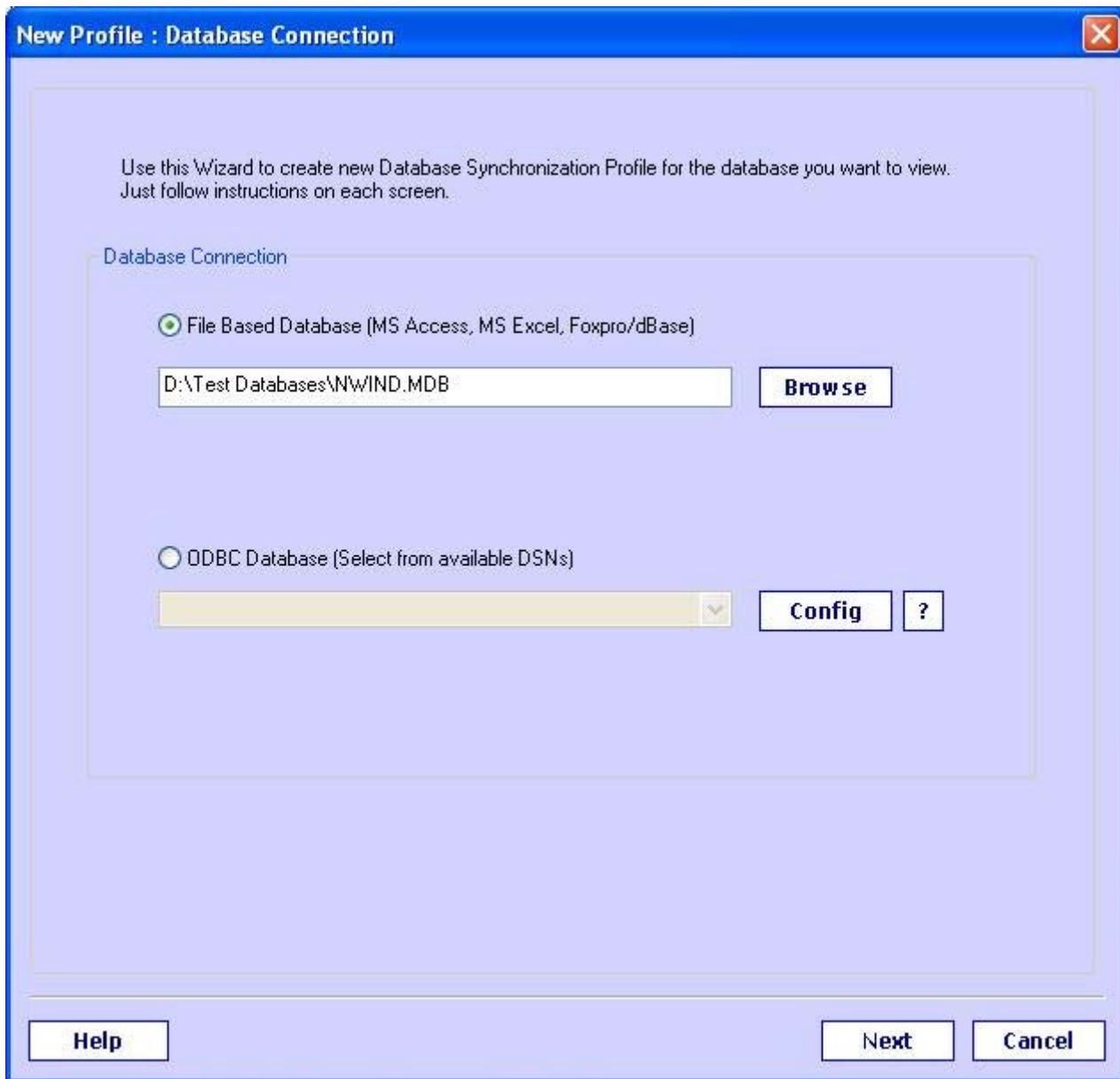


Figure 7: Database Selection

3.1.2 File Based Database

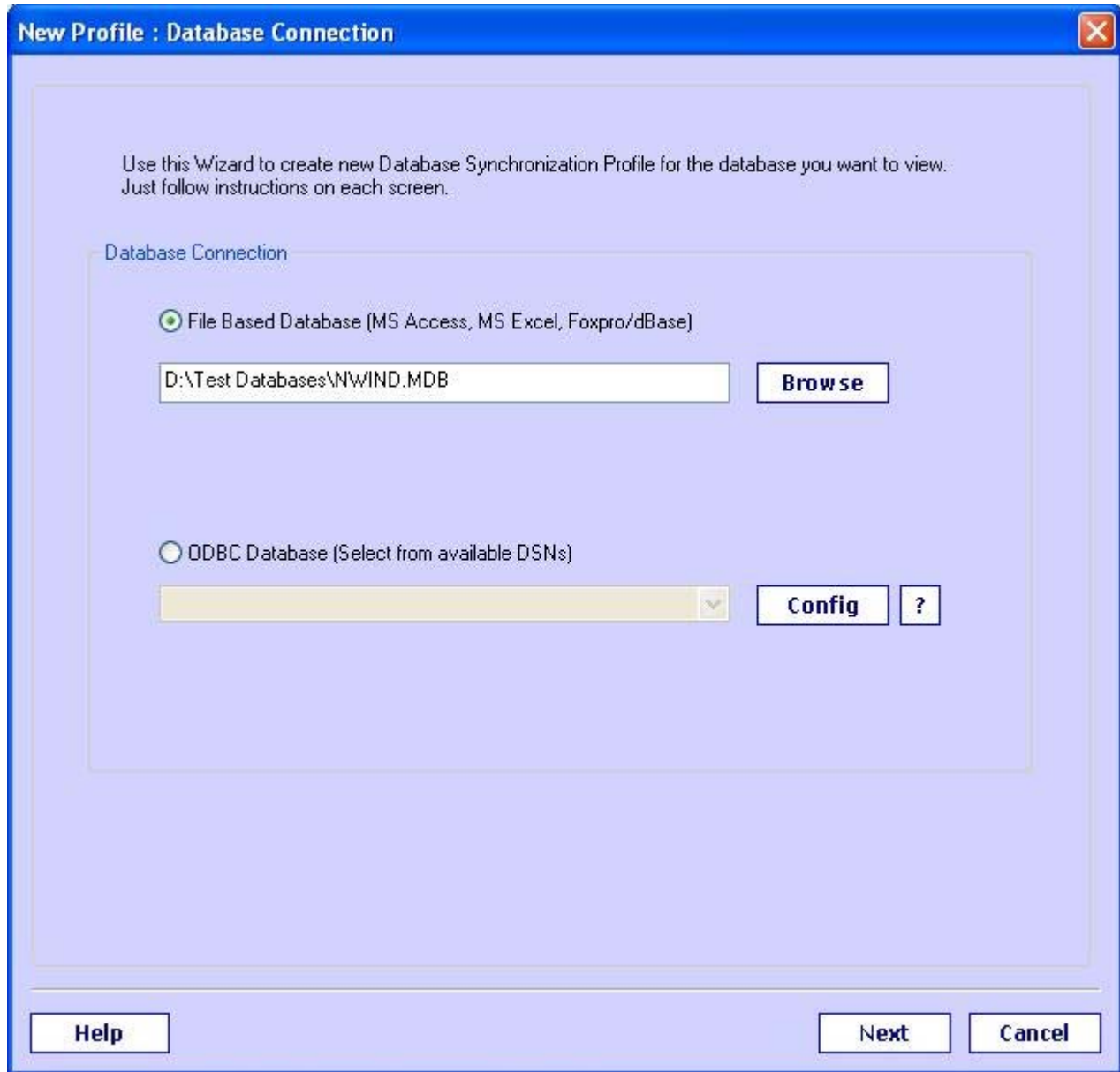
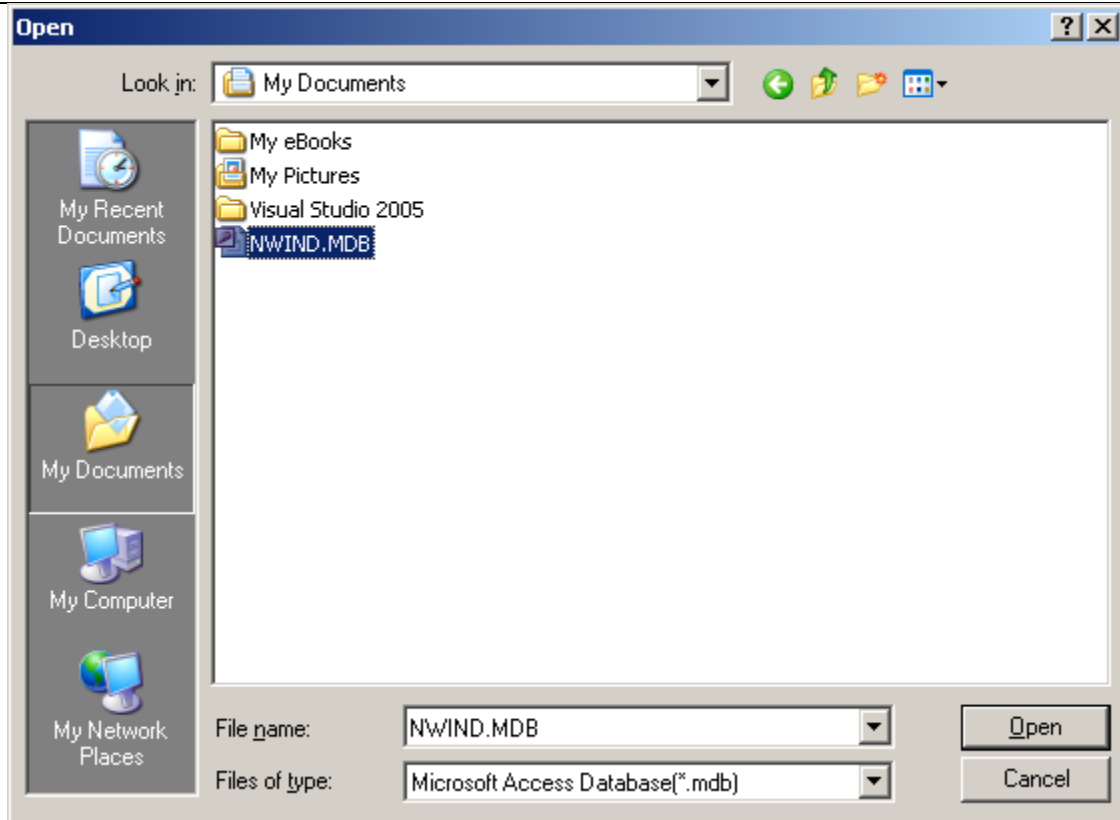


Figure 8: File Based Database Selection

Click on **Browse** button to select file of type: **MS Access, MS Excel, FoxPro, dBase**, You will get the screen as follows.



1. Select Files of type such as Microsoft Access Database (*.mdb), Excel Files (*.xls), or FoxPro/dbase Database(*.dbf) files and then select File name of your choice, for example *NWIND.mdb*, and click **Open**.
2. When you select an Excel file using Browse button, you will get a dialog prompt as:

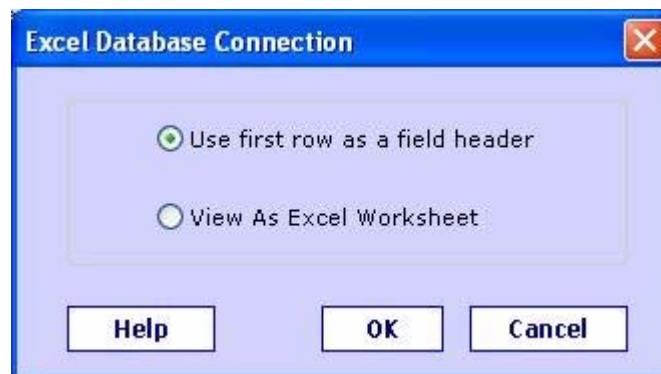
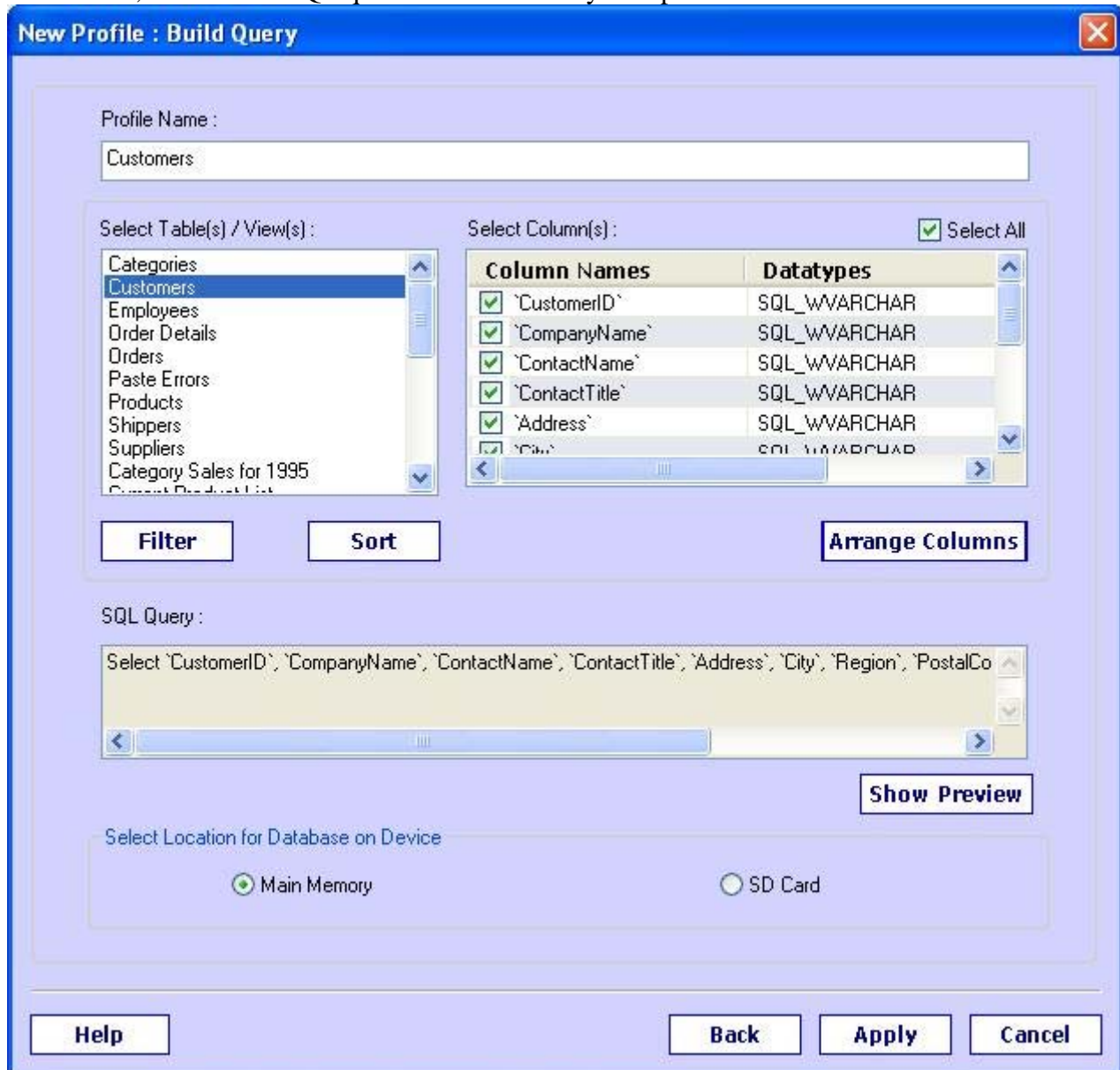


Figure 9: Excel Selection

Here, when you select "View As Excel Worksheet", contents will be shown similar to that of Excel Worksheet. Whereas, when you select "Use first row as a field header", it will be treated as a database. In this case, customized SQL queries will work on your Spreadsheet.



To manually apply filters and sort orders click on "**Filters**" and "**Sort**" buttons.

3.1.3 DSN based Database

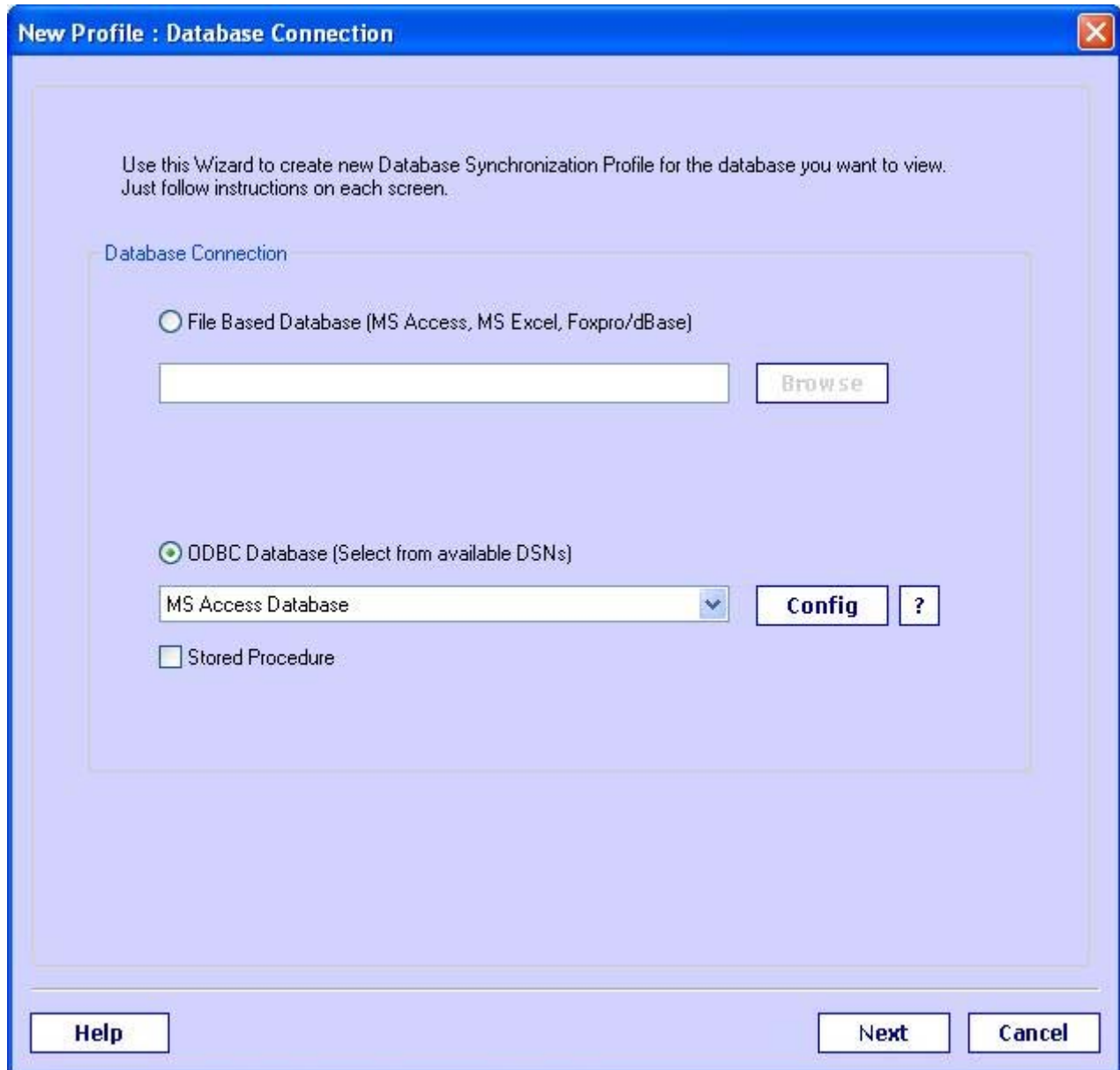


Figure 10: DSN Database Selection

Click on popup provided to select database via Database Source (DSN) such as **Oracle, MySQL, SQL Server**. You will get list of available Database Source Name.

You can manage DSN via ODBC Data Source Manager in Windows Control Panel.

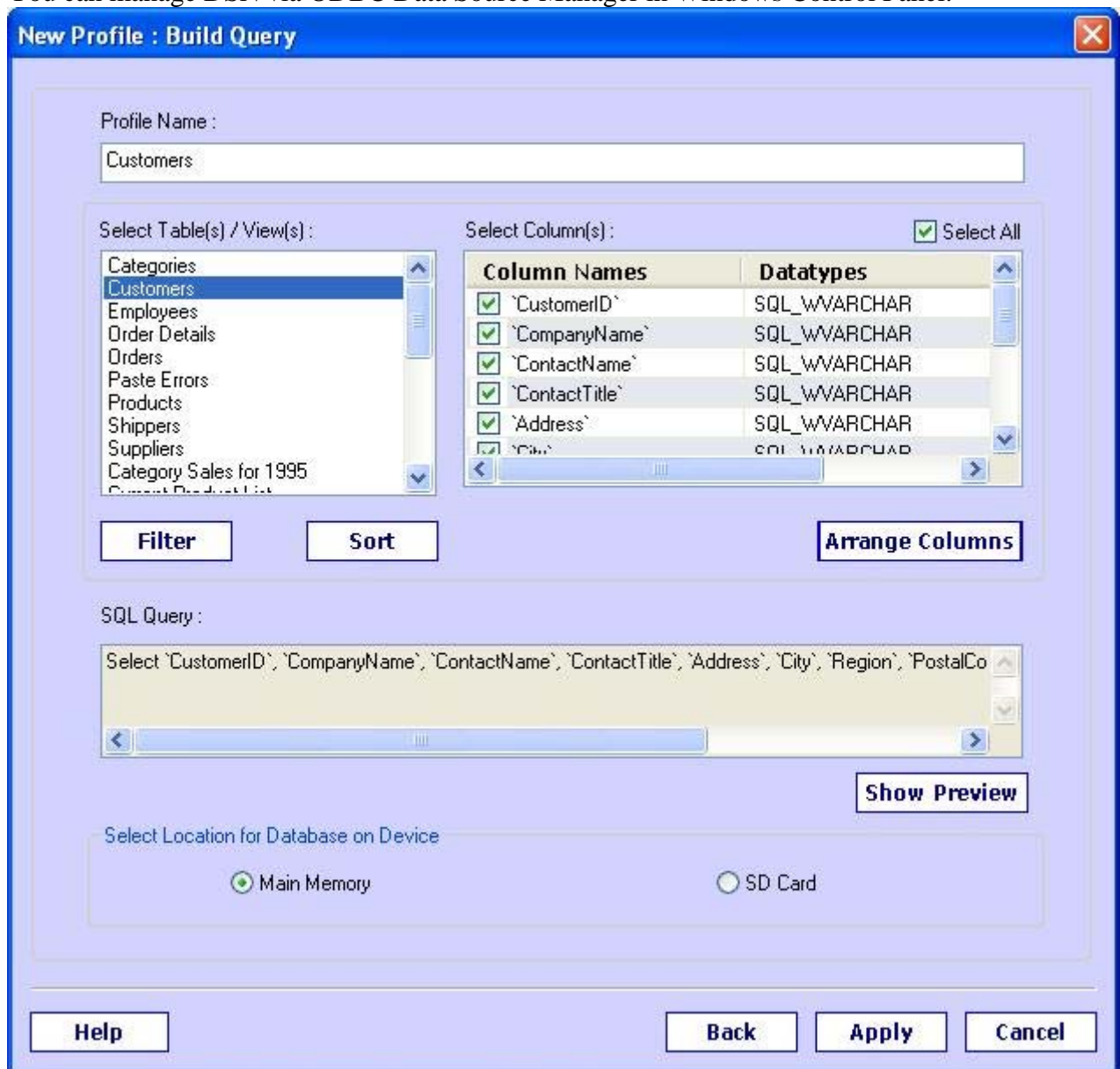


Figure 11: Table selection

3.1.4 Applying Filters

In the above dialog box, click on "**Filters**" button, you will see the following filter dialog:

Filters [X]

Filter Joining	Field Name	Filter Operator	Filter Value
<input checked="" type="checkbox"/>	`CompanyName`	LIKE	'A%'

Filters [X]

Field :

Operator :

Value :

Figure 12: Apply Filter

Here, you can apply as many filters as you want. Click on "Add" button to have more filters. Select field from "Field" dropdown control, select operator from "Operator" dropdown control and click on "Value" edit box and enter value, which you want as a filter condition value.

3.1.5 Apply Sort

In “New Profile: Build Query” dialog (Fig. 11), click on the “Sort” button, you will get the following sort order Dialog.

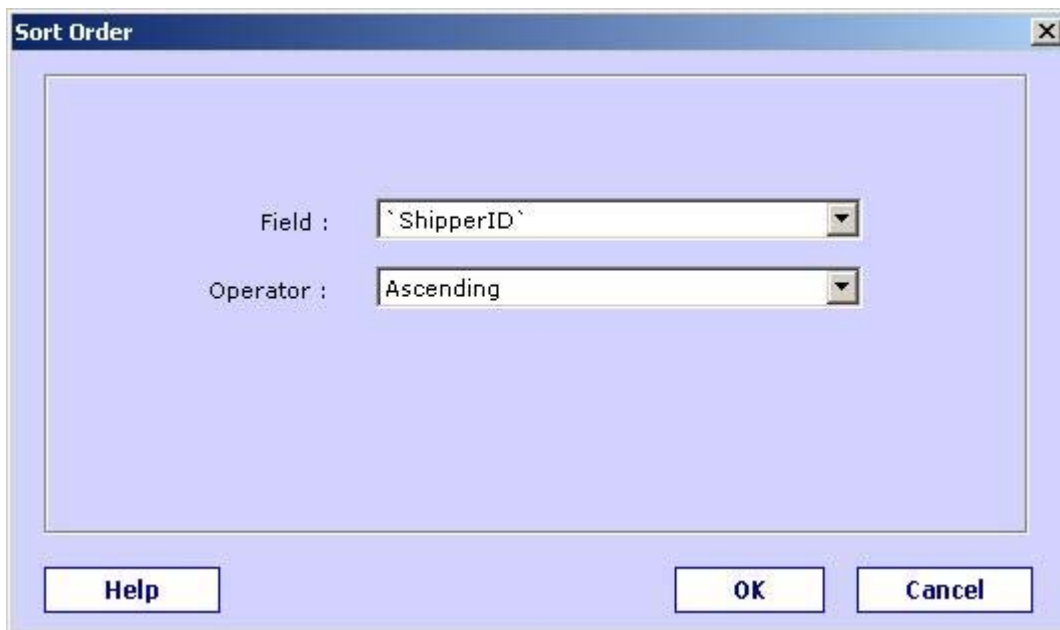
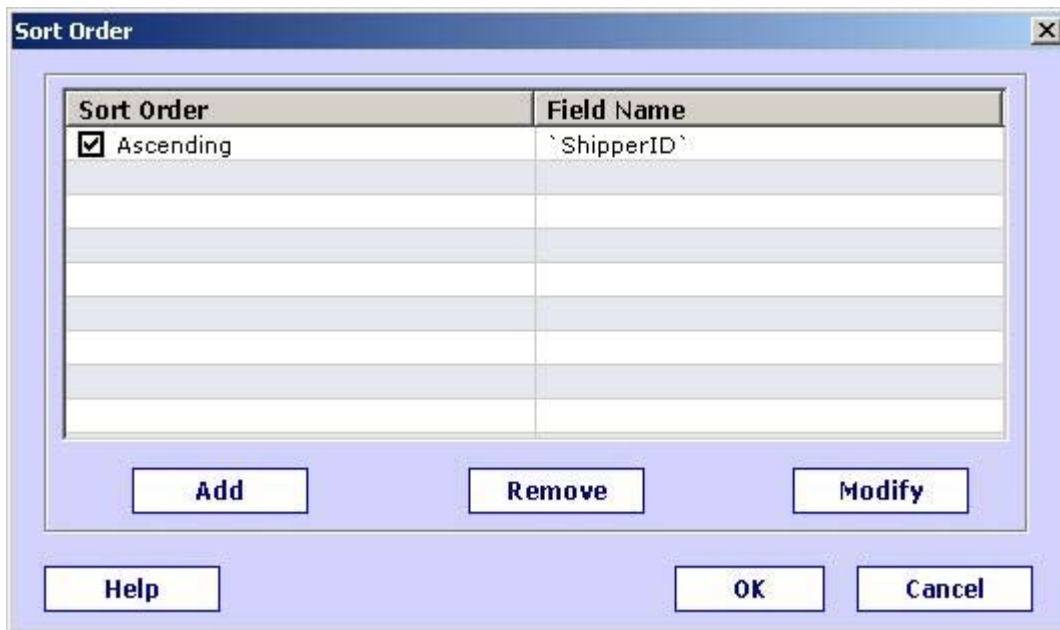


Figure 13: Apply Sort

Use “Add” button to implement Sorting on particular column.

3.1.6 Apply Column Sequence:

Here you can alter the order in which your database field on your Symbian Phone. Select the fields in the order in which you want those to appear on your Symbian Phone. Use “Clear All” button to uncheck all the selected fields. Use “Undo Select” button to undo last selection.

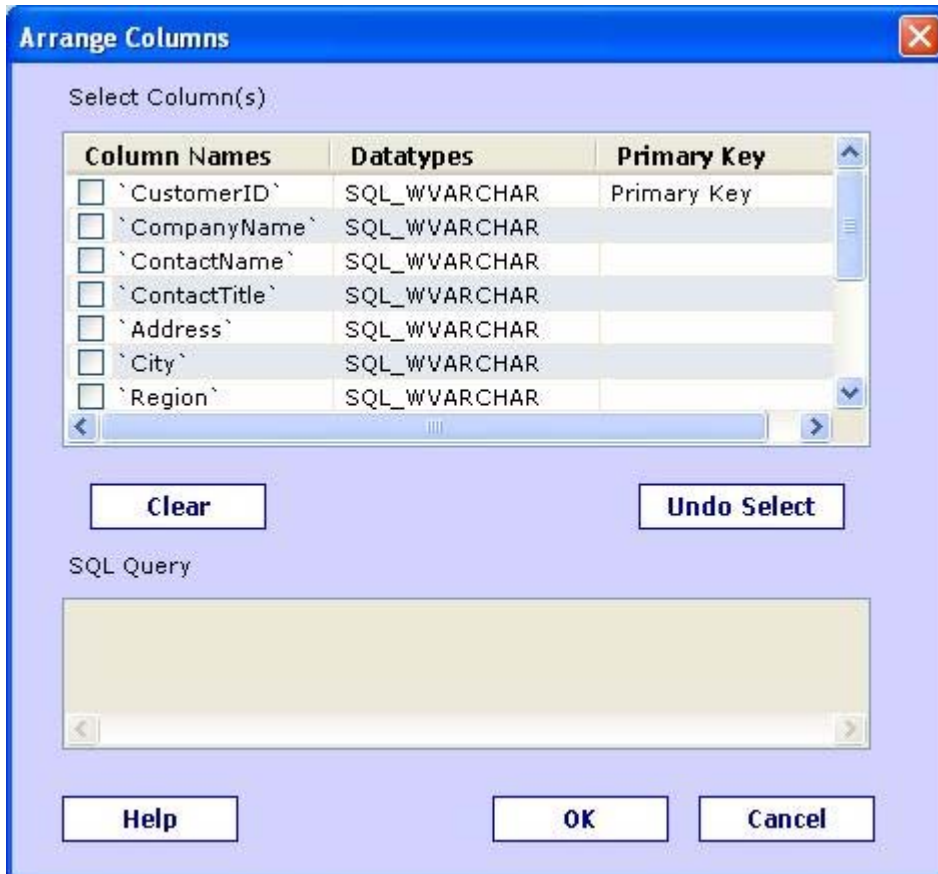


Figure 14: Arrange Columns

3.1.7 Select Location of Database on Symbian Phone

User can select destination for his database on Symbian Phone. User can either save data on Main Memory or SD Card. After selection of database, select destination and finish profile creation process by using Apply button.

3.1.8 Selection of Stored Procedure

After selecting “ODBC Database” option (in fig.7), you will get “Stored Procedure” check mark option, enable this check mark and you will get list of stored Procedure in your database. Select Stored Procedure from this list.

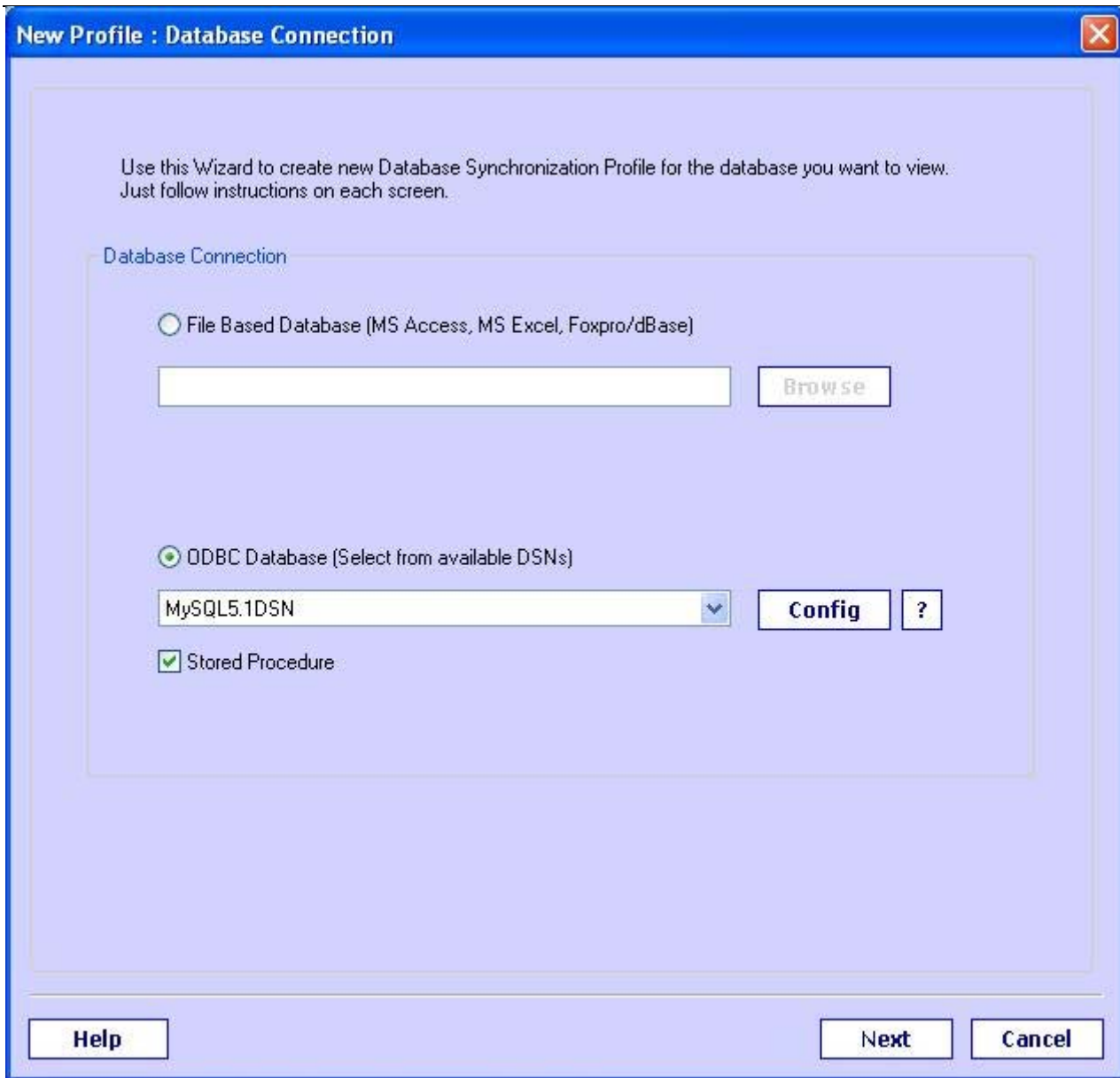


Figure 15: Select DSN of Stored Procedure

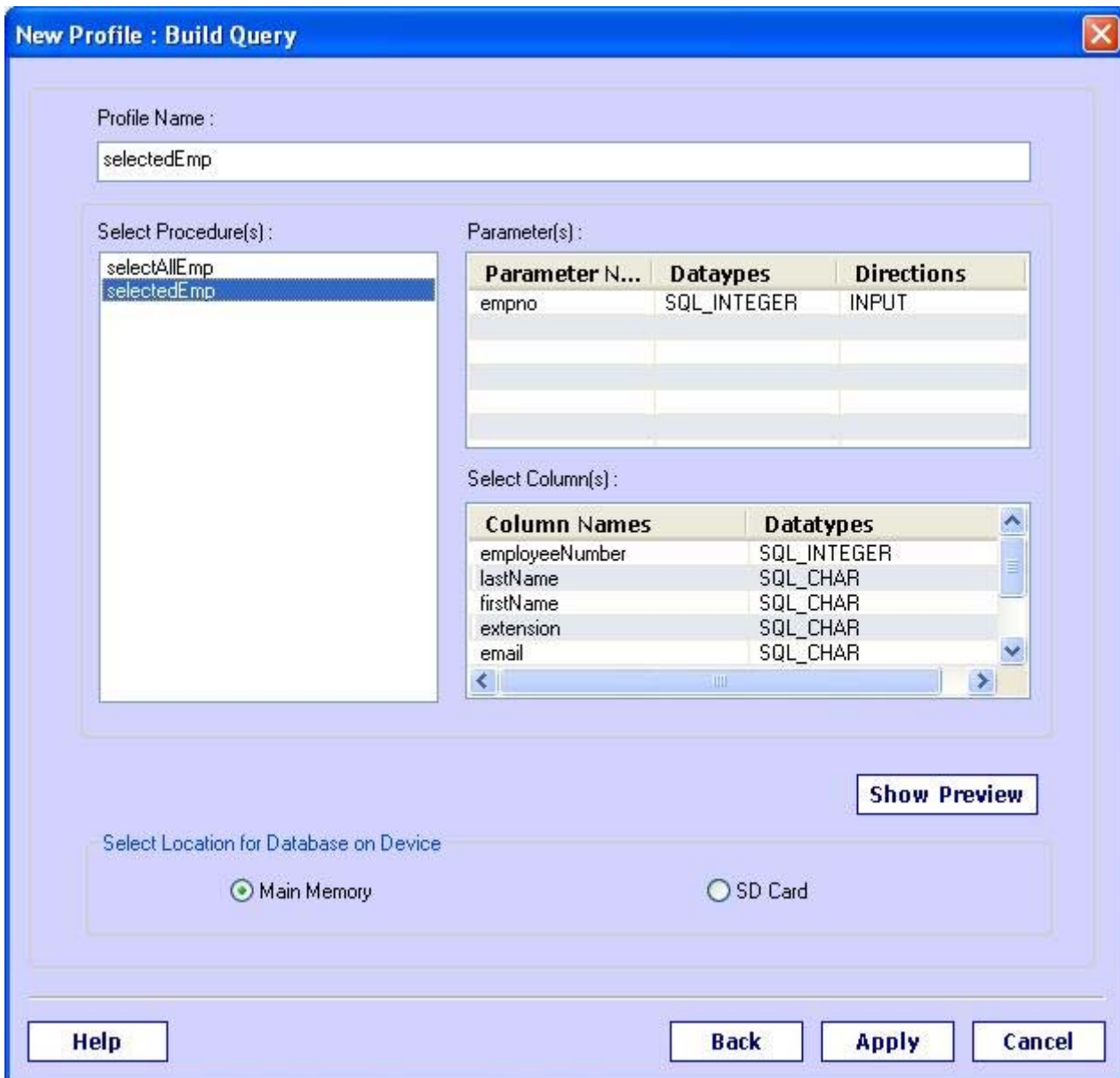


Figure 16: Selection of Stored Procedure

If your stored Procedure will have parameter values, then Parameter values dialog will appear. Select Particular Parameter and click on Value field for that parameter. Enter specific value you want. Use OK button to finish it.

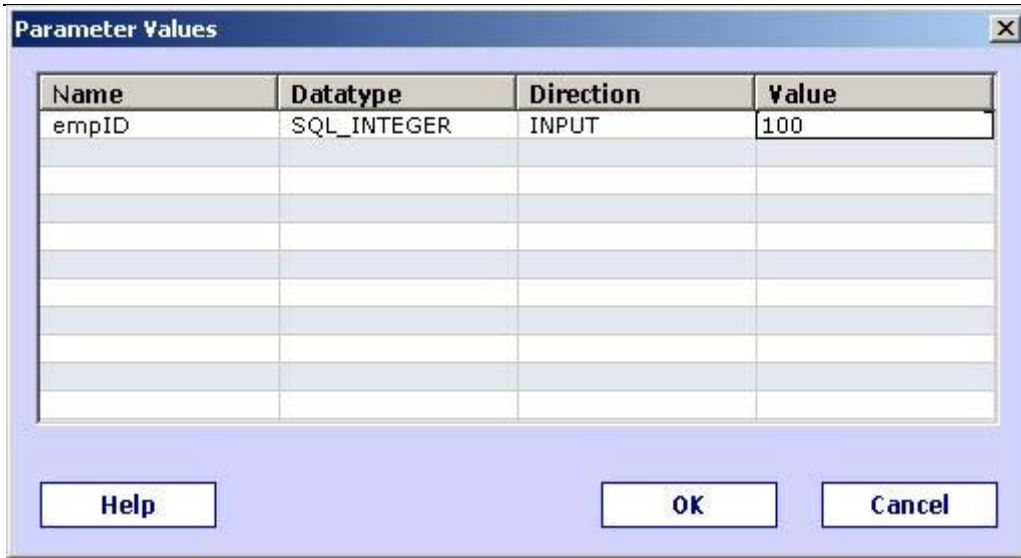


Figure 17: Enter Parameter Values for Stored Procedure

3.2 Preferences

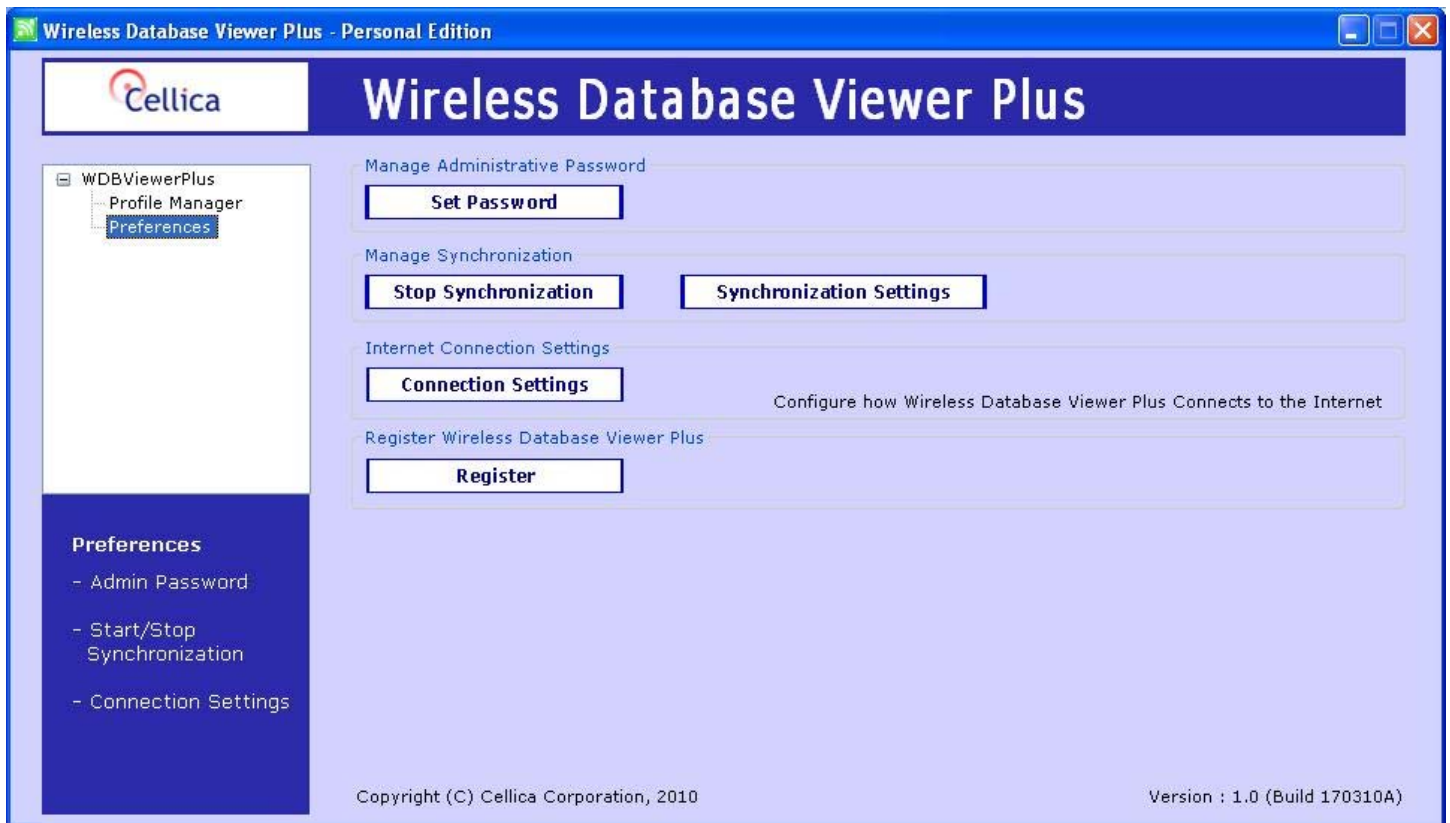


Figure 18: Preferences available on Desktop side DBViewer Plus

- **Set Password:** Protect the desktop side application by setting the password.
- **Start Synchronization/Stop Synchronization:** Use this button to start and stop the synchronizing database between Personal computer and Symbian Phone.
- **Synchronization Settings:**

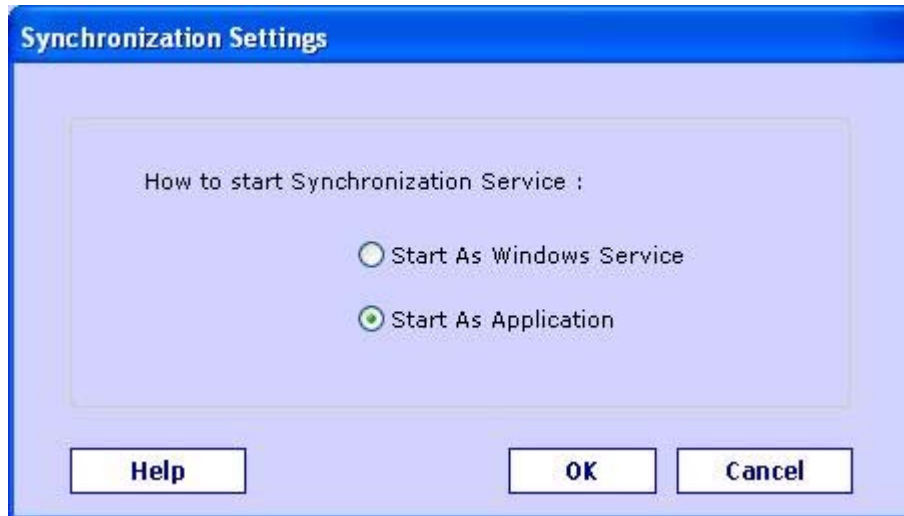


Figure 19: Synchronization Settings

There are two options available to start Synchronization application (Background).

- **As application:** As in Windows Service Mode, it's not running in any user's context, it can't access specific user's data/resources (which are specific to user account) e.g. User DSN, Network Mapped drive, network resources etc. To avoid such type of problem related to Windows Services, use “Start As Application” option.
- **As Windows Service:** It starts without any user logged in. It does not run in any specific user's login account.

- **Connection Settings:** If your PC having Internet connection using proxy and want to change the proxy settings then use this option.
- **Register:** This option is to register Wireless Database Viewer Plus. Here you have to enter the registration code, which you will get after purchasing the software. If you do not get automated registration information then please send IMEI of your Symbian Phone to support@cellica.com. You can get IMEI (Device ID) on registration form of Wireless Database Viewer Plus.



Registration

Wireless Database Viewer Plus

Device ID : 358247033189155

Registration Code :

Register **Evaluate**

Note Please send us "Device ID" appeared in above Blue strip on this form to get registration key. Send Device ID to support@cellica.com

Figure 20: Registration of Wireless Database Viewer Plus

4 USING THE WIRELESS DATABASE VIEWER PLUS ON THE SYMBIAN PHONE

Run the WDBViewerPlus application  on Symbian Phone.

4.1 Profile List on Symbian Phone

Once you finished profile creation on desktop side, use Sync menu on Symbian Phone to start synchronization. When the first time application will synchronize, it will check for http connection and will show following dialog if Internet connection is not available.



Once profile is synchronized, it will look like as follows.



Figure 21: Database List on Symbian Phone

4.2 Menu on Profile List



Figure 22: Menu on Profile List

Grid View	To view selected database use this menu.
Record View	To open database in Single Record View.
Refresh	To refresh the list of database.
Sync	To synchronize with desktop manually.
Preferences	To set various preferences such as Default view, Fonts, Date Format etc.

4.3 Views available on Symbian Phone

Wireless DBViewer Plus software on Symbian Phone allows to view data in two different views.

1. Multiple Record View (Table View)
2. Single Record View

4.3.1 Multiple Record View and Single Record View

In Multiple Record View(Grid View), Symbian Phone user will able to view database contents in Column view form. This has many features.

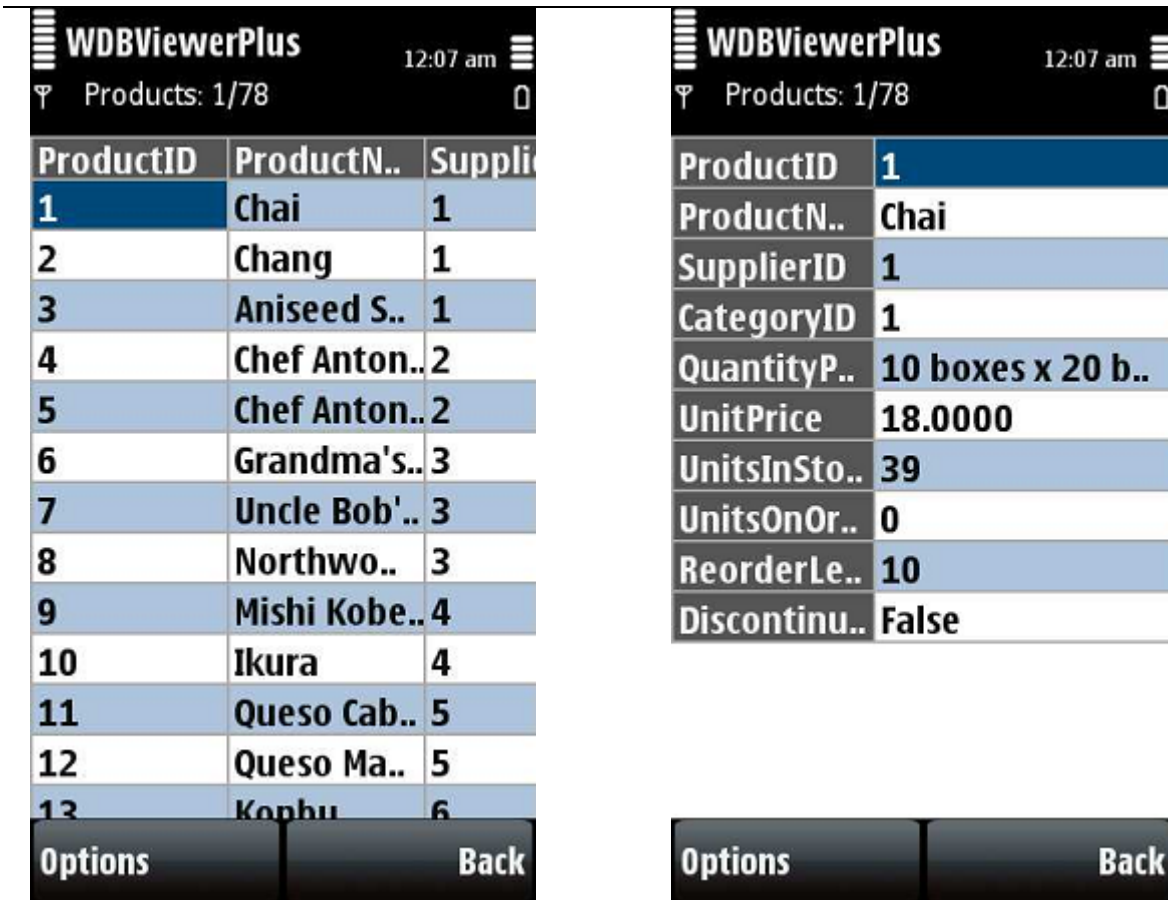


Figure 23: Multiple Record View and Single Record View

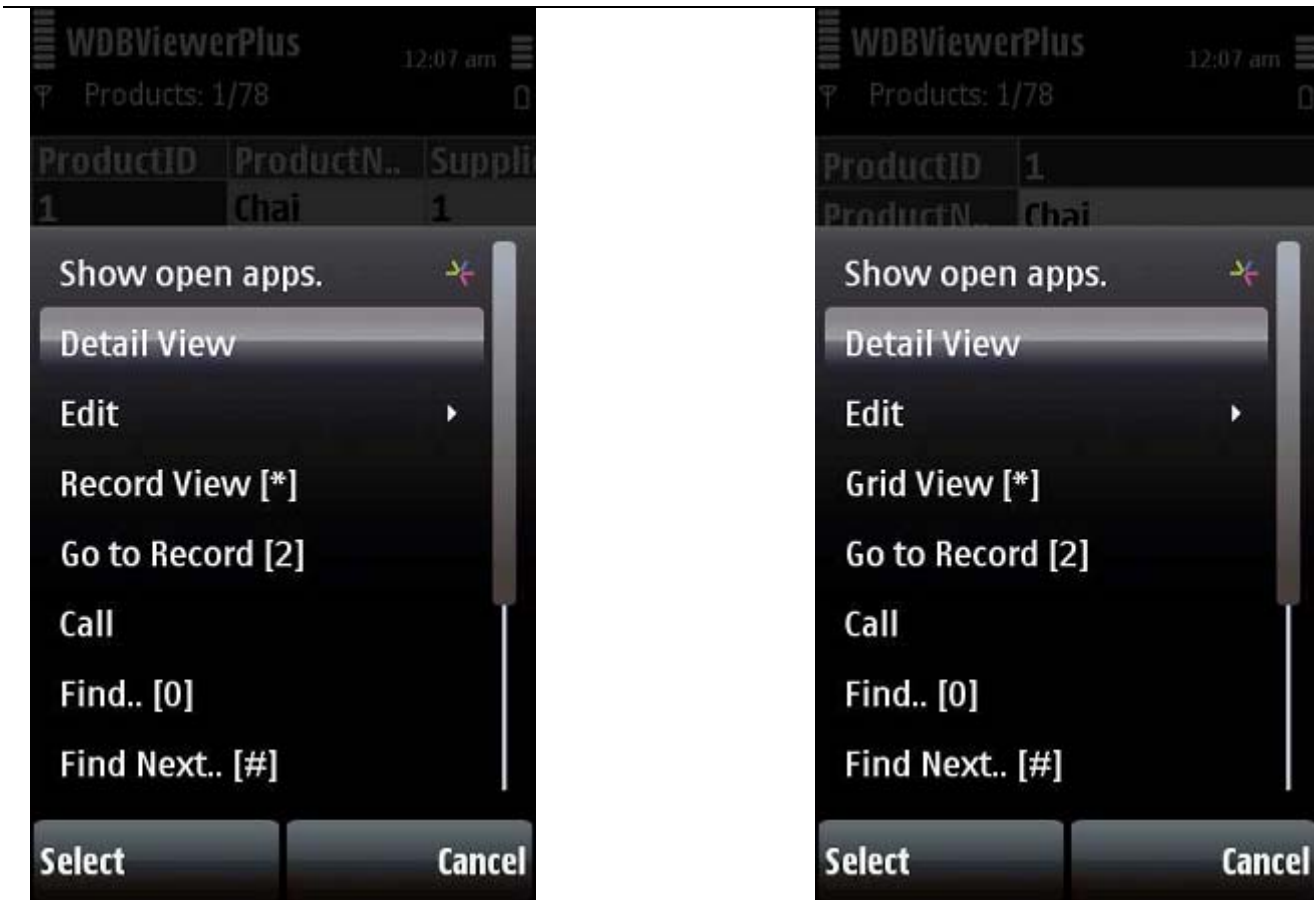


Figure 24: Menu available on Multiple Record View and Single Record View

There are various useful menu options on this screen:

Detail View	You can see the full contents of the selected field in the Detail View screen.
Edit	To edit record in selected database. You can Add/Edit/Delete records from here.
Grid View	To switch from Single Record view to Multiple Record view.
Go to Record	Use this option to go to particular record directly.
Call	Make a phone call for the selected field's numeric contents, which will be treated as phone number.
Find	Find particular data in your database. This is discussed in the next topic entitled as Search Contents.
Find Next	Find next record of specified data.
Math on Column	You can get Sum/Average/Maximum/Minimum of selected column.
Design View	Use this menu to view structure of selected database.
Record View	Use this menu to switch from Multiple Record View to Single Record View.

4.4 Search Contents

To search a particular string within the selected database, you can use "Find" and "Find Next" menu options available in both "Multiple Record View" and "Single Record view".

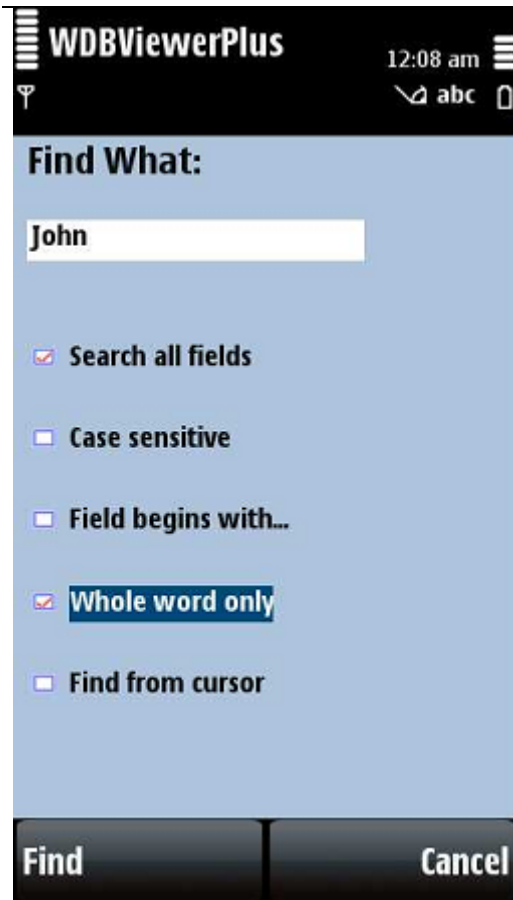


Figure 25: Search Data

You can search data in single column also, you need to unchecked “Search all fields” option on “Find” form, then select the required field from the available list of fields.

4.5 Preferences

In “Settings” form you can change Sync Setting and Application Setting. In Sync Settings, user can disable Sync menu and set auto sync time interval by mentioning specific day and time. In Application Settings, user can set Text Color, Application Password, Date and Time formats, and Column width in Grid View.



Figure 26: Preferences

Sync Menu	Use this option to enable or disable sync menu. This menu will enable your manual sync option. If this option is set to Enabled, you will get Sync menu on home screen. If this option is Disabled, then Sync menu will not be available on home screen and software will synchronize automatically according to interval set in Sync Interval option.
Sync Interval	This will allow you to set automatic sync interval time. You can set interval for days, hours or minutes. Application will synchronize automatically in background with your PC on the interval, which is set here.
Internet Access Point	Use this menu to set the Internet Access Point for Application to connect. Application will use this Access point to synchronize data with your Desktop wirelessly.
Column Width	Use this menu to set the width of Column in Multiple Column view.
Column Text Color	This will allow user to set color of column header.
Record Text Color	This will allow user to set text color of record data.
Password Protection	Use this menu to enable password for WDBViewerPlus application on your device.
Date Format	Use this menu to set the date to view as per your requirement.
Time Format	Set time format 12-hours or 24 hours.

5 FREQUENTLY ASKED QUESTIONS

Frequently Asked Questions (FAQ) are questions that our customers routinely ask us or email about.

5.1.1 Does software send complete database every time?

No, This software sends only changed records like new/updated/deleted records and not complete database each time.

5.1.2 Is my database secured?

Yes, Data transfer between Symbian Phone side DBViewer Plus and Desktop application is secured as 128 bit AES is used for encryption.

5.1.3 What is evaluation period of this software?

Software has 5 days evaluation period. In 5 days, software will work with all features and functionalities. After 5 days, Desktop side DBViewer Plus will ask for registration of software. Purchase software from Cellica to get registration code. After purchasing the software you will get

Registration code from Cellica, Use it in following registration form. After registration, you will able to software with all features and functionalities.

After 5 days Evaluation period, Desktop side DBViewer Plus will not synchronize with Symbian Phone and it will ask for registration code and device side DBViewer Plus will work with only 7 records.



Registration

Wireless Database Viewer Plus

Device ID : 358247033189155

Registration Code :

Register **Evaluate**

Note Please send us "Device ID" appeared in above Blue strip on this form to get registration key. Send Device ID to support@cellica.com

Figure 27: Registration dialog

5.1.4 How can I sync my database automatically?

From Settings form, select “Sync Settings” option and disable Sync menu option. Now set interval of syncing in days, hours and in minutes.



5.1.5 How can I synchronize data automatically?

To start synchronization automatically, In Settings form of Wireless DBViewer Plus on your Symbian Phone, Set “Sync Menu” option to Disabled. This will allow you to set “Sync Interval”. In Sync Interval you can set Day, Hours, and Minutes.

5.1.6 What time I can set for automatic synchronization?

For automatic synchronization, you can set “Sync Interval” option in Days, Hours, and Minutes.

5.1.7 Whenever I add/edit/delete record on Symbian Phone, in Record view I get Red/Cyan color.

Cyan color indicates that record synchronization is still in progress.

Red color indicates that Record has problem while syncing with desktop database. “Status Message” menu shows information related with record syncing process.

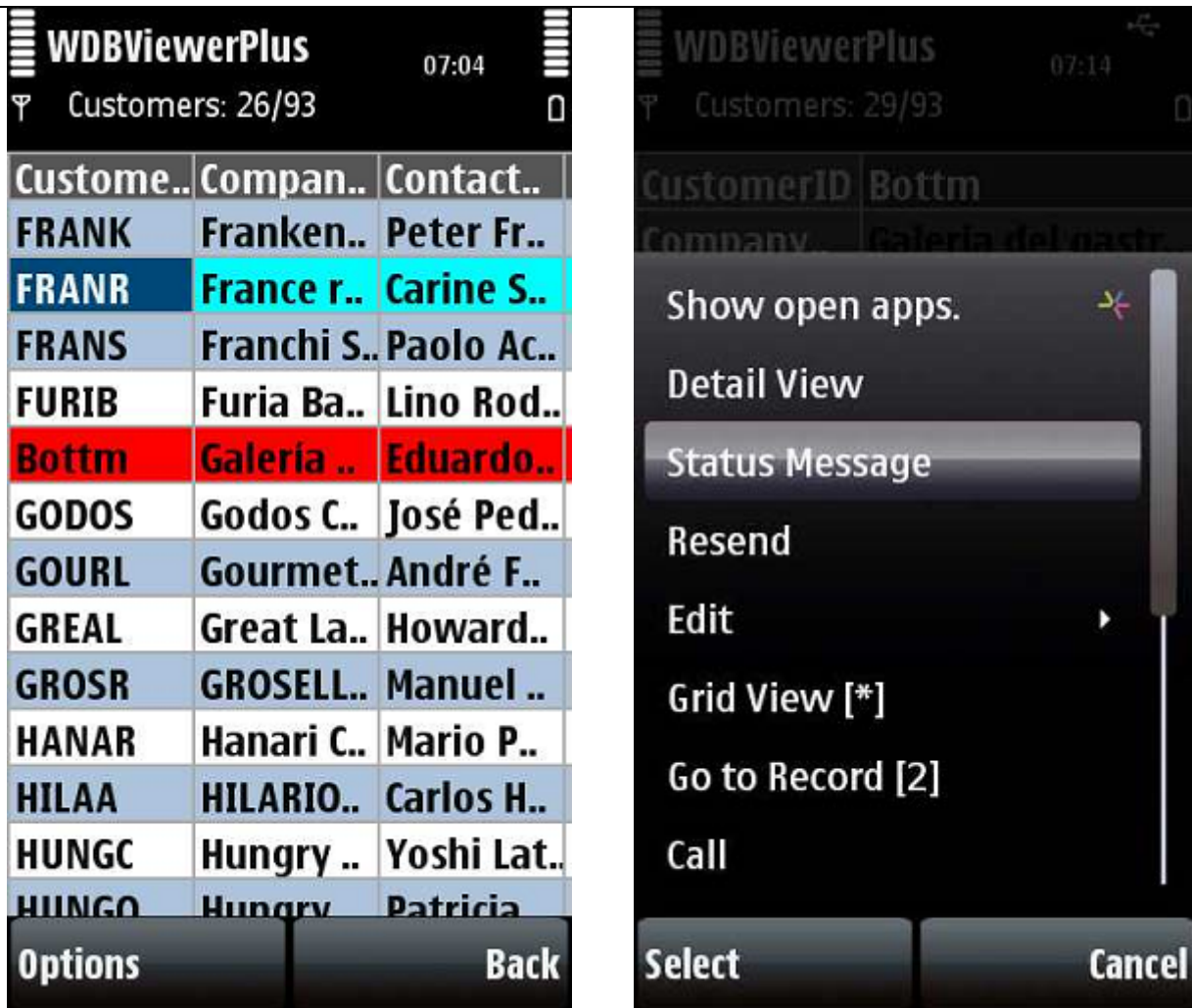


Figure 28: Status of updated record

6 SUPPORTED DATA TYPES

- Currently Wireless Database Viewer for Symbian Phone supports following data types.
- Memo, Char, VarChar, VarChar2
- Number of type: Byte, Decimal, Integer, Long Integer, Single, Real, Float, Double
- GUID
- Date/Time
- AutoNumber of type: Long Integer
- Yes/No
- Hyperlink
- Currency

7 SYSTEM REQUIREMENT

Desktop: Windows 2000 or Windows XP with Service Pack 2, Windows 2003, Windows Vista, Windows 7
Internet must be available on the PC.

Symbian Phone: S60 3rd and 5th Edition phone with OS 9.1 or above.

8 CONTACT US

You can use the following email addresses to contact us:

- Product support
support@cellica.com
- Sales inquiries
sales@cellica.com