

KB Article 2016_EE_910
Jan 21, 2016
Last update: Jan 27, 2016

How to Setup synchronization of Database on Network PC with Windows Service Mode in Cellica Database application? (Personal/Enterprise Edition)

Product(s)

Cellica Database (Wi-Fi, Internet and Anywhere) Personal Edition or Enterprise Edition

Symptoms

- Creating a profile for MS Access Database/SQL Server/My SQL on network server does not synchronize.
- The PC requires to be logged on for synchronization to work.

Note:

- This document applies to the MS Access/SQL Server/My SQL database on the network PC.
- The user needs to perform following changes on the PC where Cellica Database Desktop software installed. No changes are required on the database server.

We will break the task in following subtasks,

- 1) **Create a profile for the network database in Cellica Database**
- 2) **Set Synchronization Server to Run As Windows Service**
- 3) **Set Synchronization service to run with User log on**
- 4) **Test the sync**

1) Create a profile for network database in Cellica Database

For SQL Server and My SQL Database:

⇒ The DSN used to create profile must be a System DSN (not User DSN)

For MS Access Database :

⇒ Do not use DSN while creating a profile for MS Access database on network PC(LAN). You need to create a profile by selecting the file based database connection option while profile creation process. Please use the steps given below to create the remote MS Access database profile for synchronization.

- You must provide full network path while specifying the database path at the time of profile creation (like "\\computer name\folder\database.accdb") . Do not use network drive path (like "G:\database.mdb")
- Select file based connection for database connection while creating a profile for network MS Access Database.

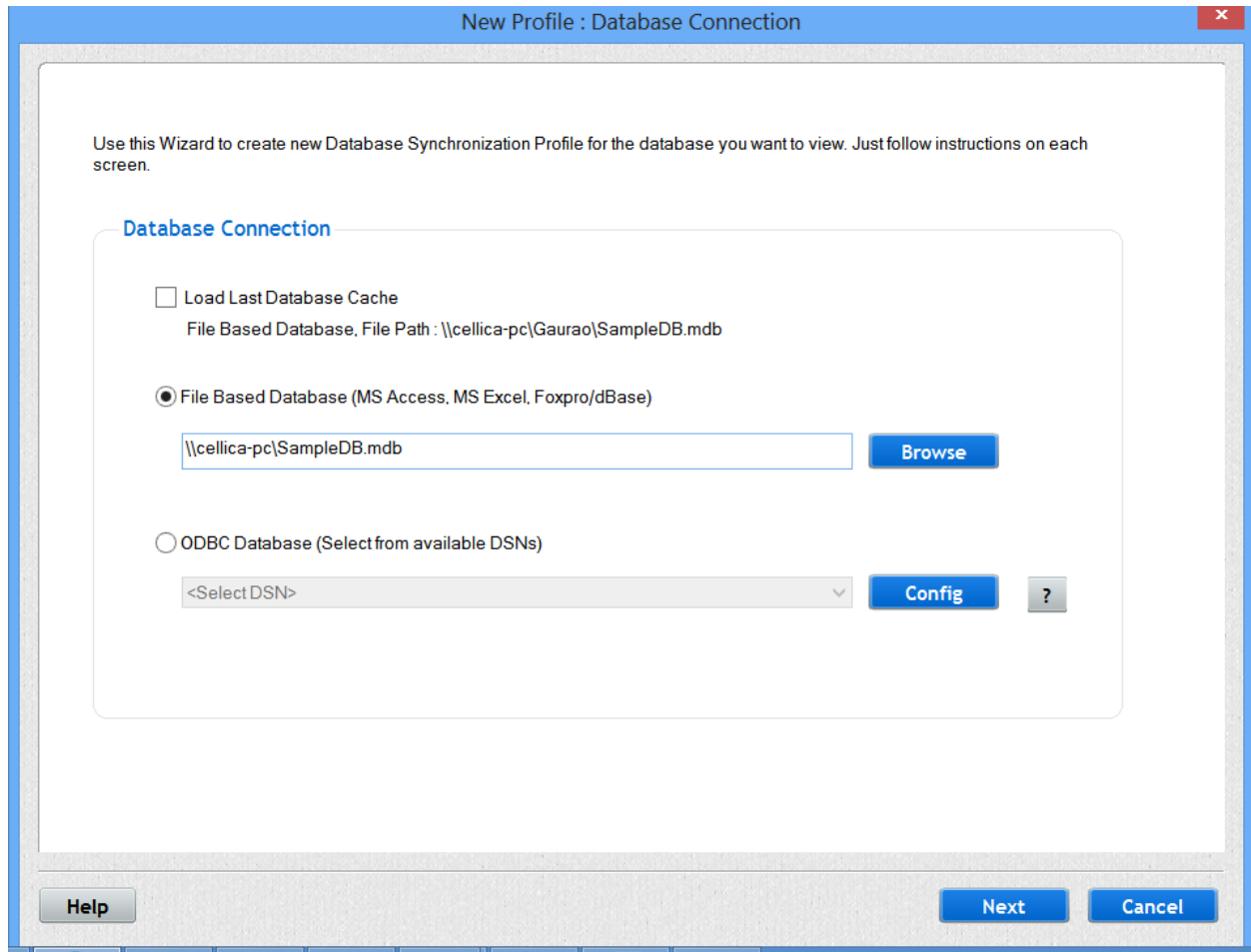


Figure 1: Create File base profile for network database

- Select the Remote / Network Access database path using "Browse" button. (Select the complete network path)
- After selecting the MS Access database, press next button and select users for the profile.
- Select Database table to create a profile.

2) Set Synchronization Server to Run As Windows Service

- Open "Settings" module of Cellica Database desktop software.
- From Synchronization settings, set the sync server to "Run As Windows Service"
- Stop Synchronization using "Stop Synchronization" option.
- Close Cellica Database Desktop Application.

3) Set Synchronization service to run with User log on

- Open “Component Services” using following steps.
Press **Windows+R** on keyboard and type **dcomcnfg** , click OK.

a) Select Services (Local) option from the Component Services Console Root.

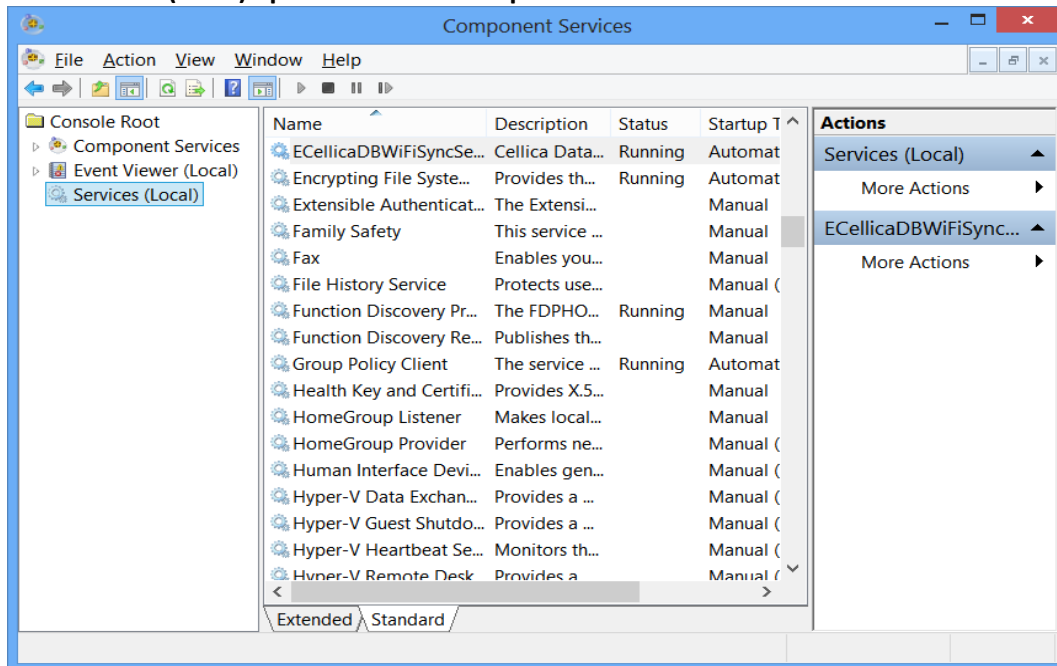


Figure 2: Services(Local)

- Select the sync service as per the Cellica Database version installed on your PC.
- Following is a list of sync service exe names for Personal and SOHO/Enterprise Edition of Cellica Database.
 - Cellica Database Anywhere SOHO/Enterprise Edition: ECellicaDBAnywhere.exe
 - Cellica Database Anywhere Personal Edition: CellicaDBAnywhere.exe
 - Cellica Database WiFi SOHO/ Enterprise Edition: ECellicaDBWiFiSyncService.exe
 - Cellica Database WiFi Personal Edition: CellicaDBWiFiSyncService.exe
 - Cellica Database Internet SOHO/ Enterprise Edition: CWDBVPSyncService.exe
 - Cellica Database Internet Personal Edition: WDBVPSyncService.exe

d) “ECellicaDBWiFiSyncService” (SOHO/ Enterprise WiFi) windows Service from the list of services.

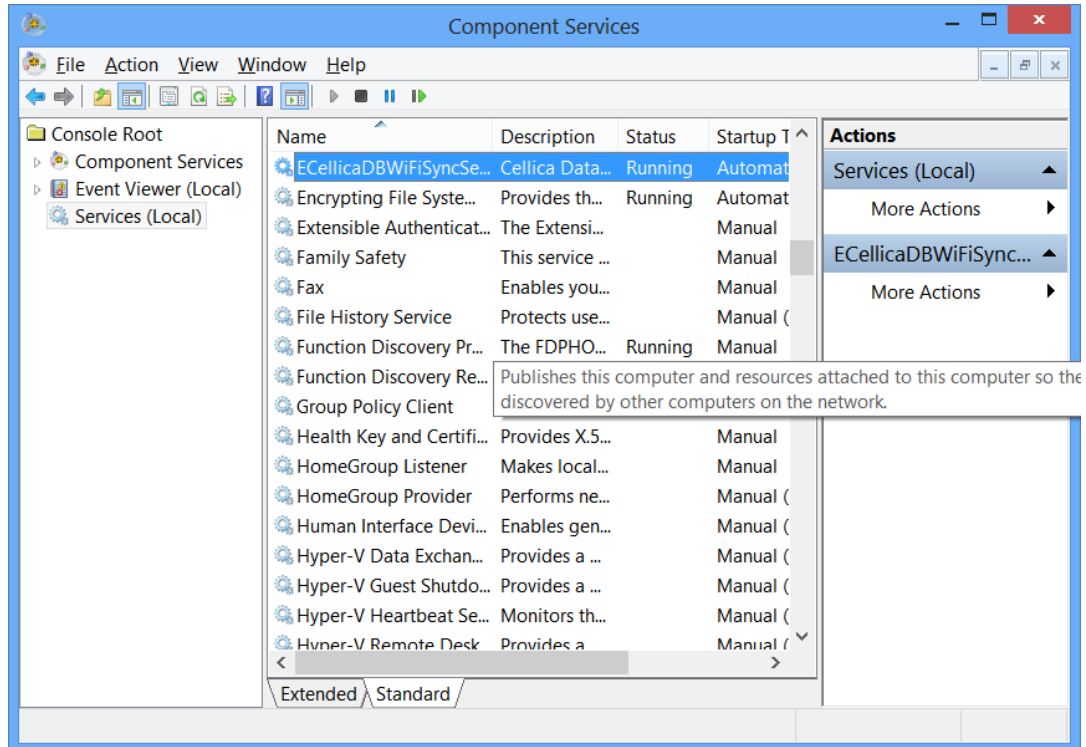


Figure 3: -Select “ECellicaDBWiFiSyncService” windows Service

e) Right Click on “ECellicaDBWiFiSyncService”. Select “Properties” from the Popup menu.

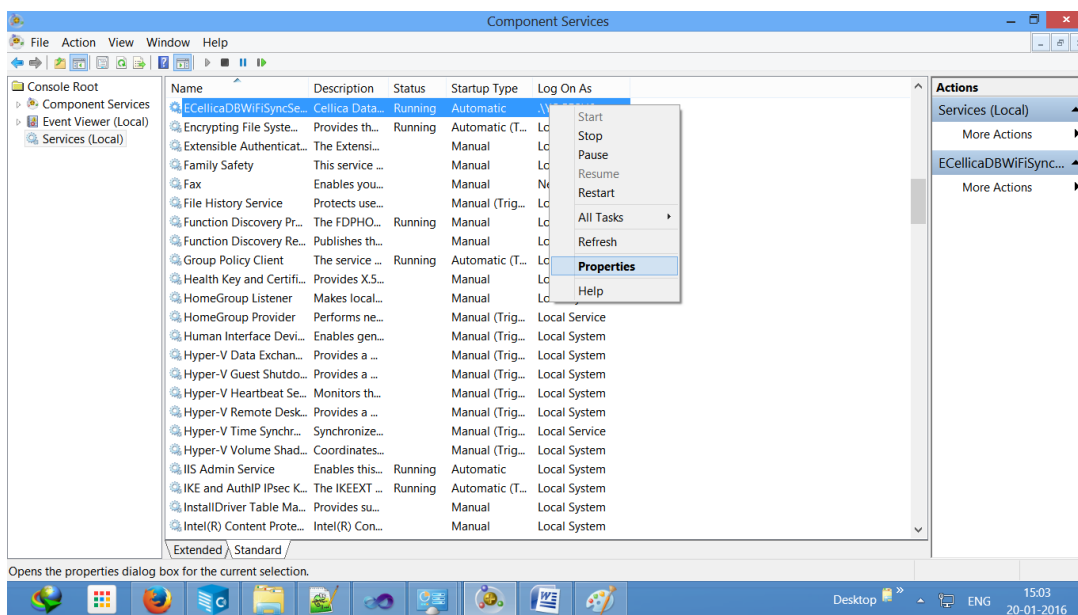


Figure 4: Open ECellicaDBWiFiSyncService Service properties

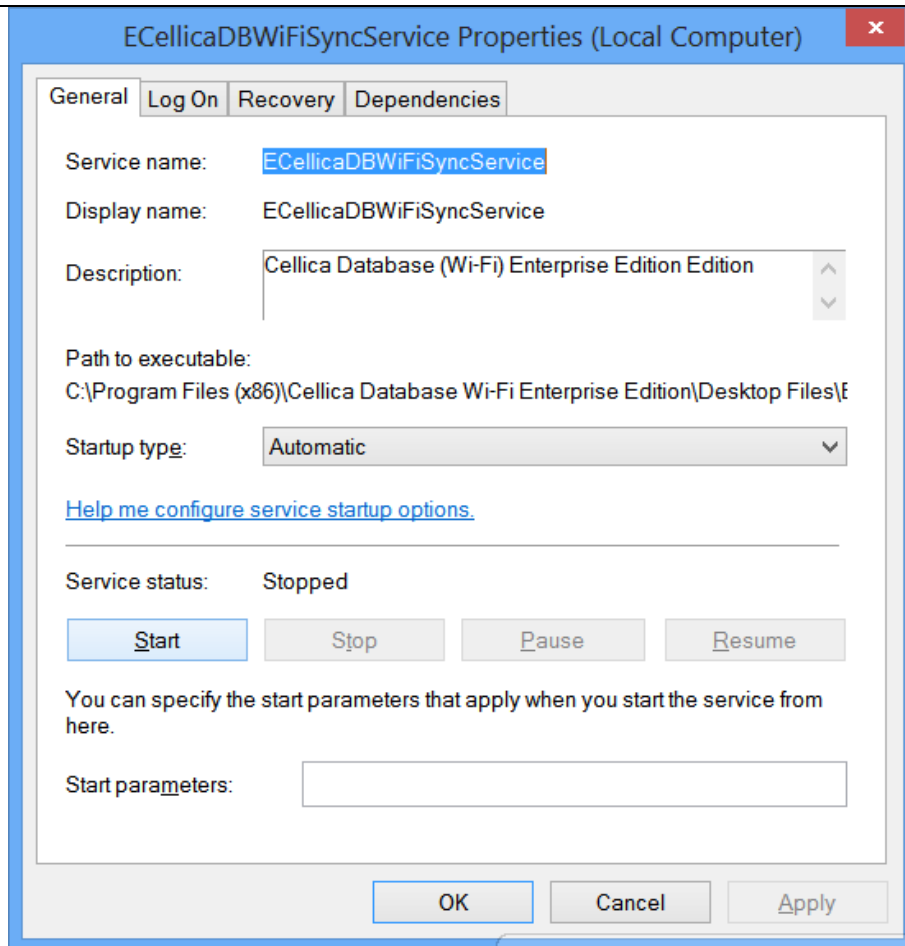


Figure 5: ECellicaDBWiFiSyncService Service properties

f) Select “Log On” tab, it will show you following dialog.

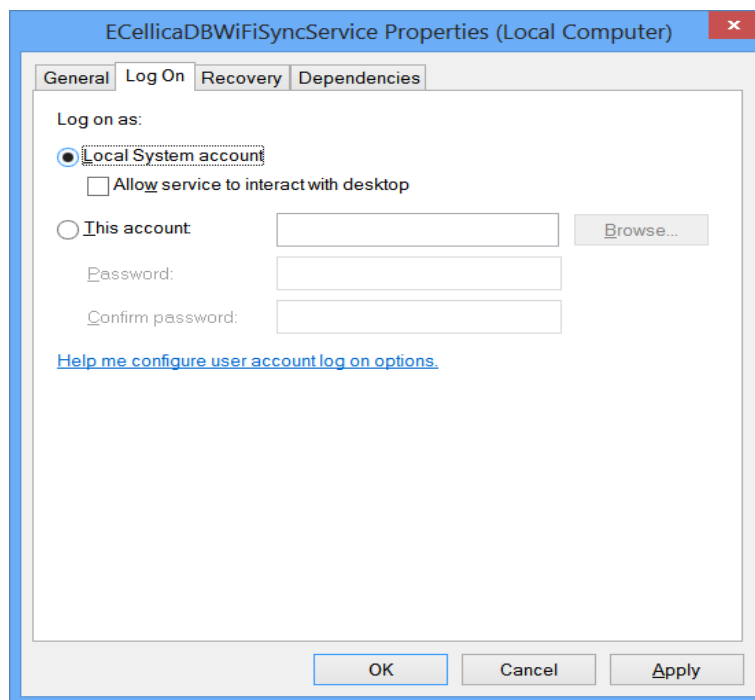
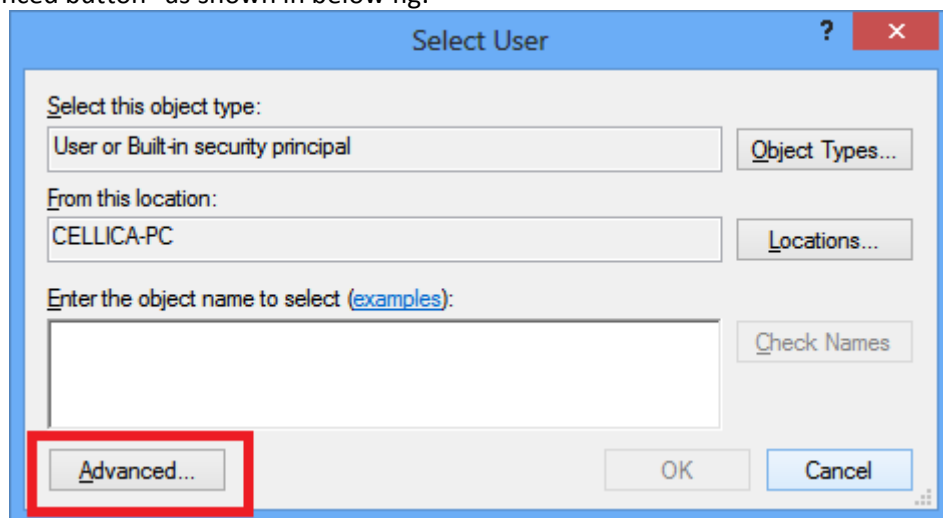


Figure 6" Select Log on Tab

- g) Select “This account” Radio Option. Select your login User using “Browse” button using following steps.
- h) Click on “Advanced button” as shown in below fig.



- i) Click on “Find Now” button.

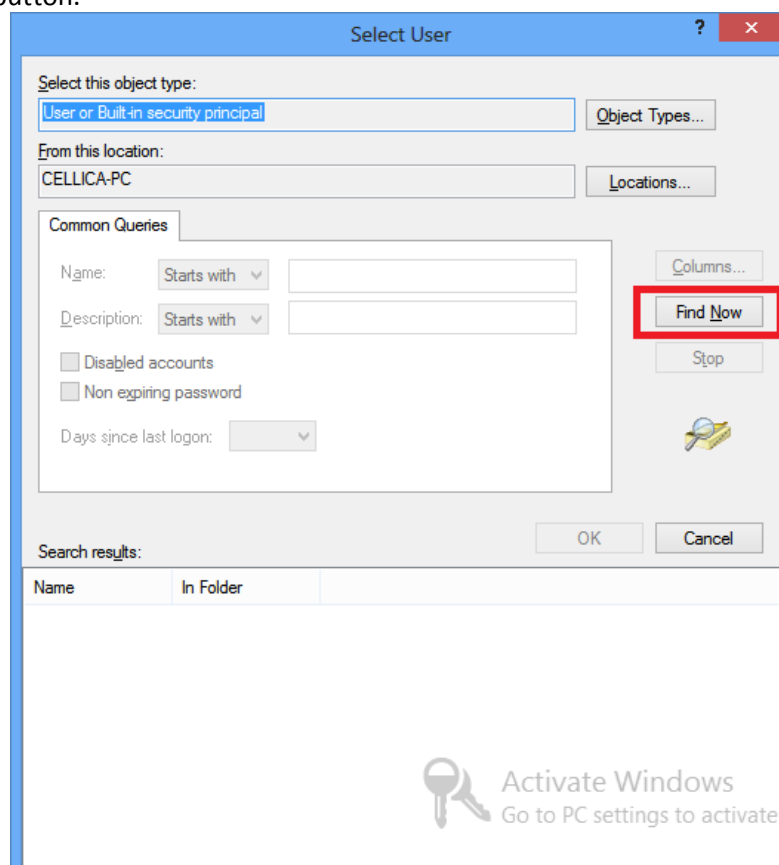


Figure 7: Find users

j) It will show you the list of user accounts on your PC, select your user account.

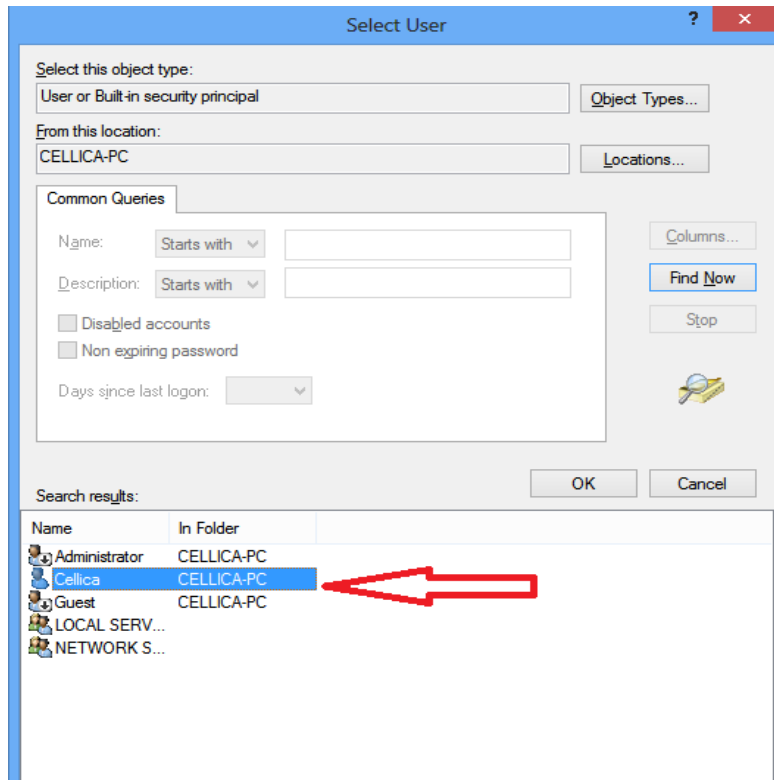
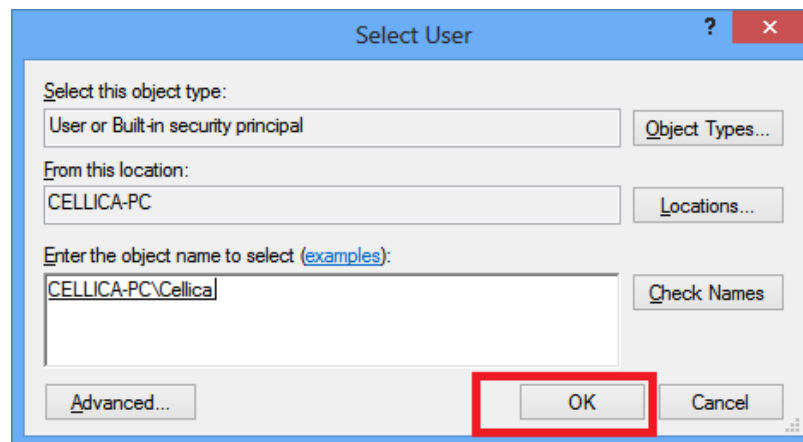


Figure 8: Select user login account

k) Click "Ok" button.



- l) Enter the Password (if assigned any) and click “Apply” button to finish the User Account adding process.

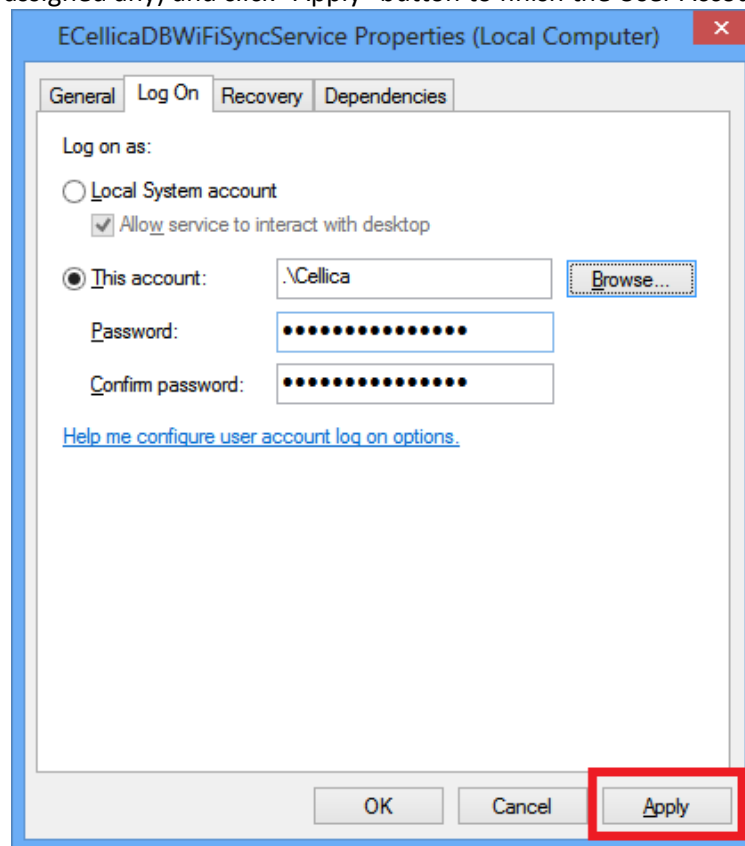


Figure 9: Enter account password

4) Sync from Device

- a) Open Cellica Database Desktop Server.
- b) Start the Synchronization using “Start Synchronization” Option in Settings module.
- c) Sync from the Cellica Database application on your device