

KB Article 2013_EE_902
Jan 24, 2014
Last update: Jan 24, 2014

How to use Global variable values in mappings condition for “Go To Form” button in Cellica Database Enterprise Edition (WiFi/ Anywhere)?

Product(s)

Cellica Database Enterprise Edition(WiFi/ Anywhere)

Details:

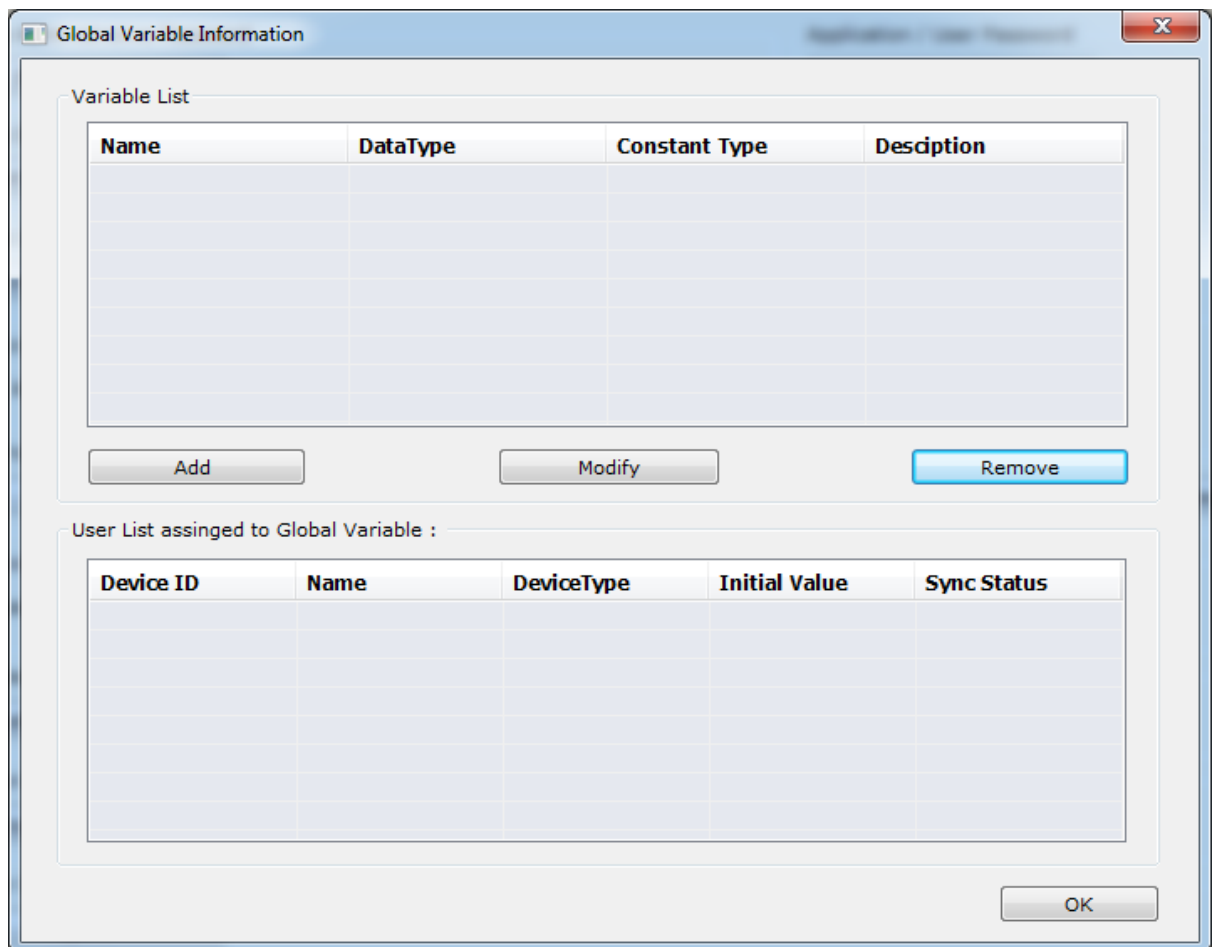
We can implement it in 3 steps:

- a) Create a Global Variable
- b) Create a form which we want to open.
- c) Put a “Go To Form” button on Parent form and specify the mapping between Global variable from step (a) and field to search for to open the form in step (b).

For example: We have a profile Employee which is assigned to many devices. We want to filter records from the profile as per the device id on device. We will display records from “Employee” profile filtered by “Device ID” of each device.

a) Create Global Variable

- Open Preferences module of Cellica Database desktop software.
- Click on “Global Variable” button in “Global Variable Settings” group, “Global Variable Information” dialog will be opened as below.



- Click “Add” button to create new global variable.
- Specify variable name, datatype and initial values to users, here we create global variable for “DeviceID” as follows,

Global Variable Information

Variable List

Name	Data Type	Constant Type	Description
globalDeviceID	Text	FALSE	

Add Modify Remove

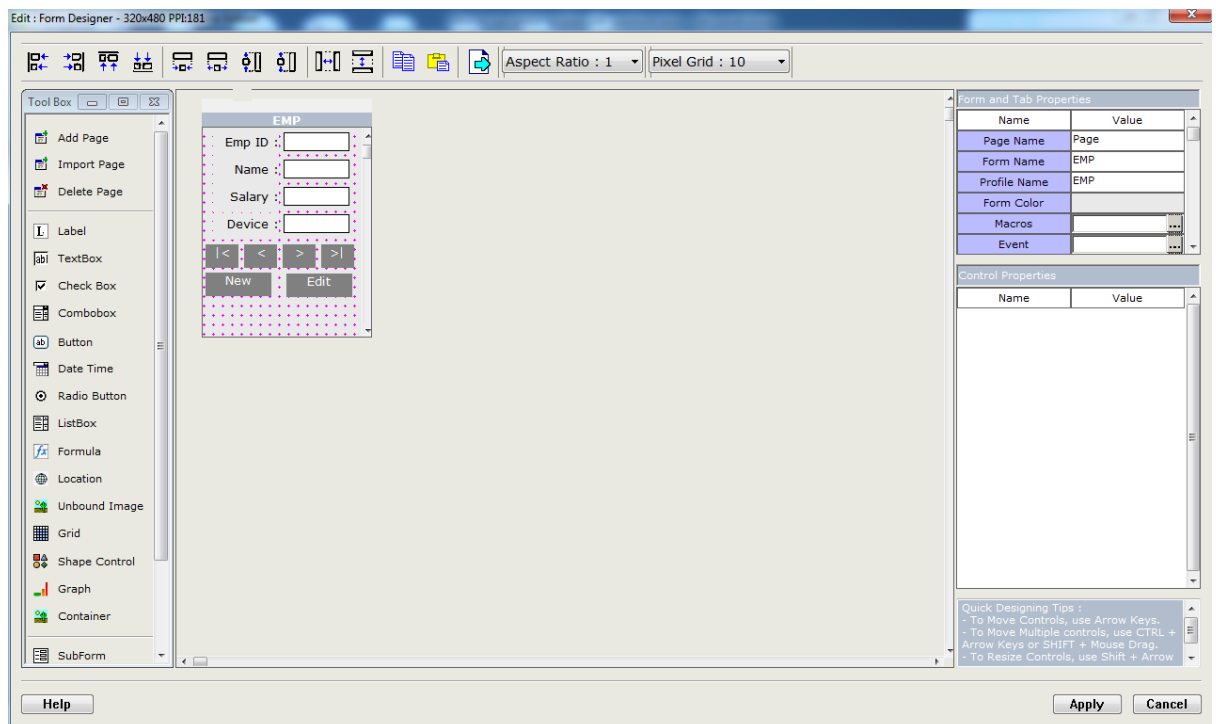
User List assigned to Global Variable : globalDeviceID

Device ID	Name	Device Type	Initial Value	Sync Status
33	33	HTC Magic	33	Not Synced
22	22	HTC Magic	22	Not Synced

OK

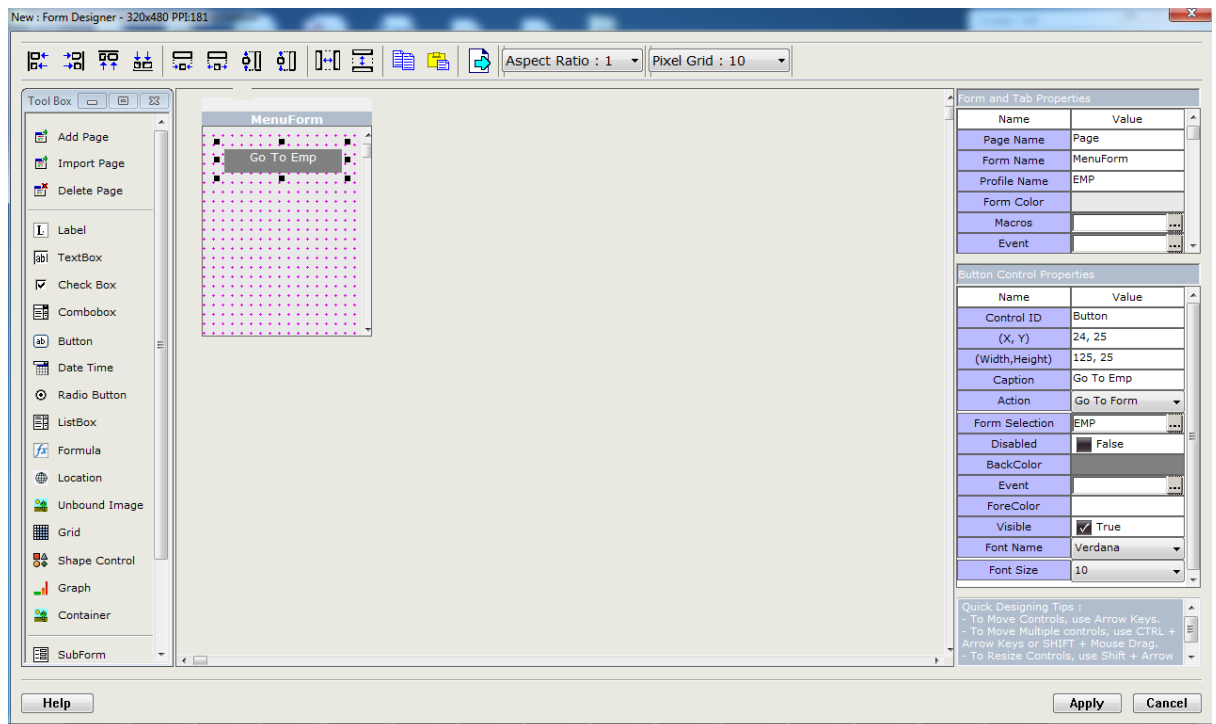
b) Create a form which we want to open.

1. Create Form where we will display the records filtered as per DeviceID value in global variable.
2. For example. we create it on “Emp” Profile as follow,



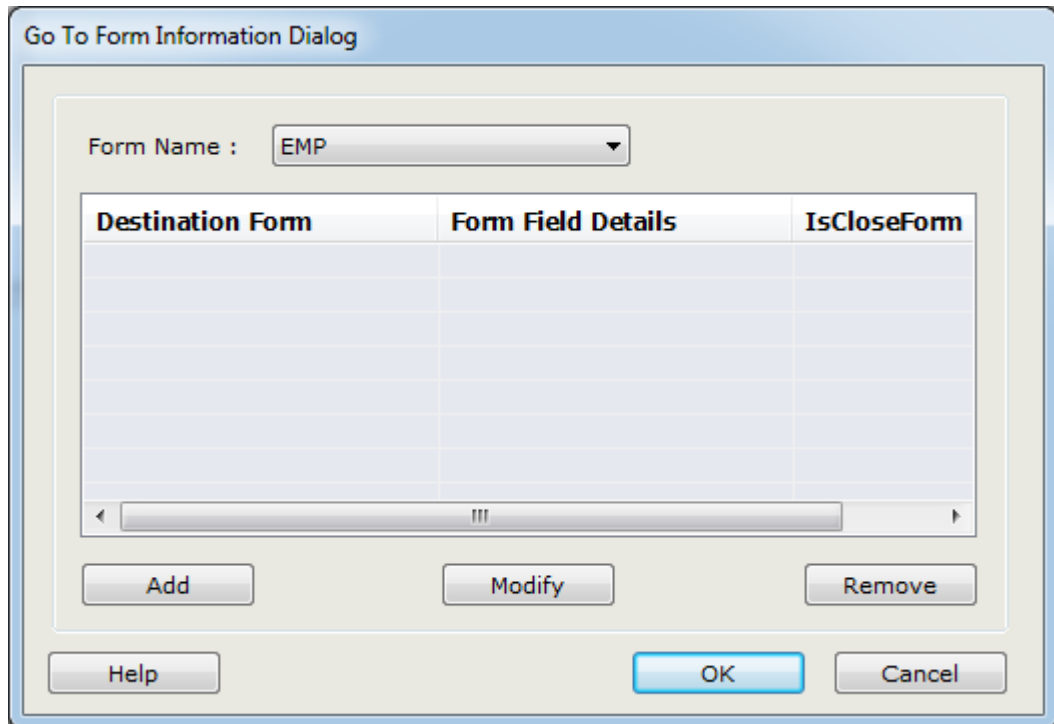
c) Create a “Go To Form” button and specify condition to open Emp Form.

- Suppose we have a menu form,



Drag Button control and perform following settings,

- Caption : Go To Emp
- Action : Go To Form
- Settings for “Form Selection” property



The dialog box titled "Go To Form Information Dialog" features a "Form Name" dropdown menu set to "EMP". Below this is a table with three columns: "Destination Form", "Form Field Details", and "IsCloseForm". The table is currently empty. At the bottom of the dialog are buttons for "Add", "Modify", "Remove", "Help", "OK", and "Cancel".

Destination Form	Form Field Details	IsCloseForm
------------------	--------------------	-------------

Click "Add" button to create Form linking.

Go To Form Fields Details Dialog

Form Name : EMP

Close Form

Join Operator	Destination Fi...	Operator	Source Field

Add Remove Modify

Help OK Cancel

Click "Add" button to create data linking of form.

Go To Form Fields Details Dialog

Form Name : EMP

Source Field : @globalDeviceID

Operator : =

Destination Field : DeviceID

Help OK Cancel

Go To Form Fields Details Dialog

Form Name : EMP

Close Form

Join Operator	Destination Fi...	Operator	Source Field
	DeviceID	=	@globalDeviceID

Add Remove Modify

Help OK Cancel

Go To Form Information Dialog

Form Name : EMP

Destination Form	Form Field Details	IsCloseForm
EMP	,@globalDeviceID,=,Devic...	FALSE

Add Modify Remove

Help OK Cancel