

KB Article 2013_EE_775
March 07, 2013
Last update: April 02, 2013

What is Lookup Mapping Property of Form Controls? / How to use data in Another Profiles while add and update record on Forms in Cellica Database application? (Personal/Enterprise Edition)

Product(s)

Cellica Database (Wi-Fi, Internet and Anywhere) Personal Edition or Enterprise Edition

Symptoms

Not Applicable.

Details:

Sometimes depending on a column data value in the current table we want to get information from another table while Adding or Modifying records.

For e.g. In the following example, we will see when working on Order Details how to get corresponding order information from Orders Table.

While designing form you can add Lookup condition to all DataColumn bound controls like TextBox, ComboBox, DateTime, Location, Formula Control etc.

- Select TextBox control for "Order ID" on "Order Details" Form.
- Click on "Lookup Mapping" property form TextBox Control Properties.
- Field Mapping Dialog will appear; on this dialog you can set lookup condition.
- Set the "Lookup Condition" Check Box to "True" by checking it. To remove lookup condition for control anytime you just need to set this checkbox to "False" by unchecking it.
- Choose the lookup profile from "Lookup Profile" combobox.
- Select lookup column form "Lookup Column" combobox.

In our case, we want to lookup "OrderID" value in "OrderDetails" profile in "Orders" table. So set "Lookup Profile" to "Orders" and "Lookup Column" to "OrderID".

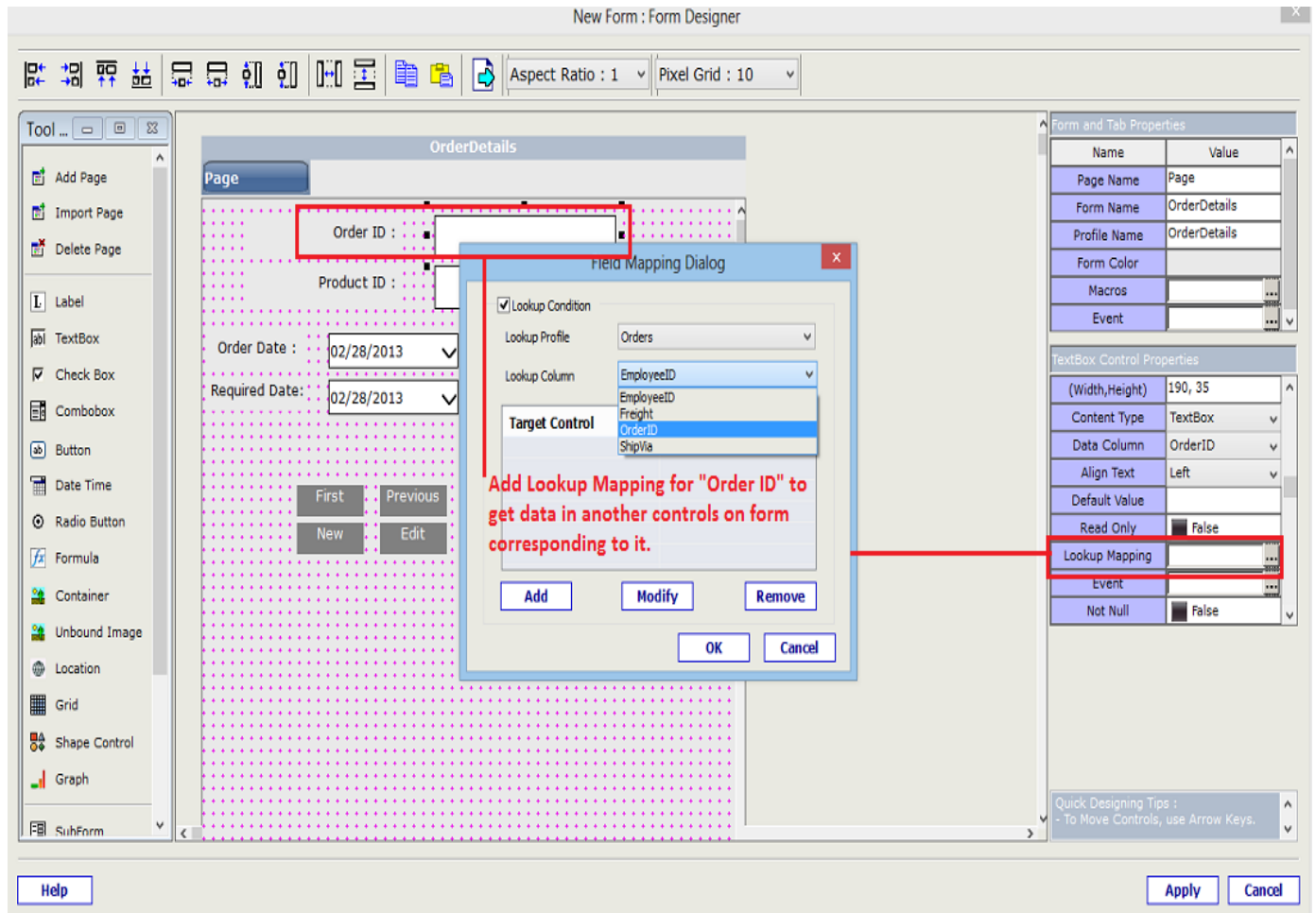
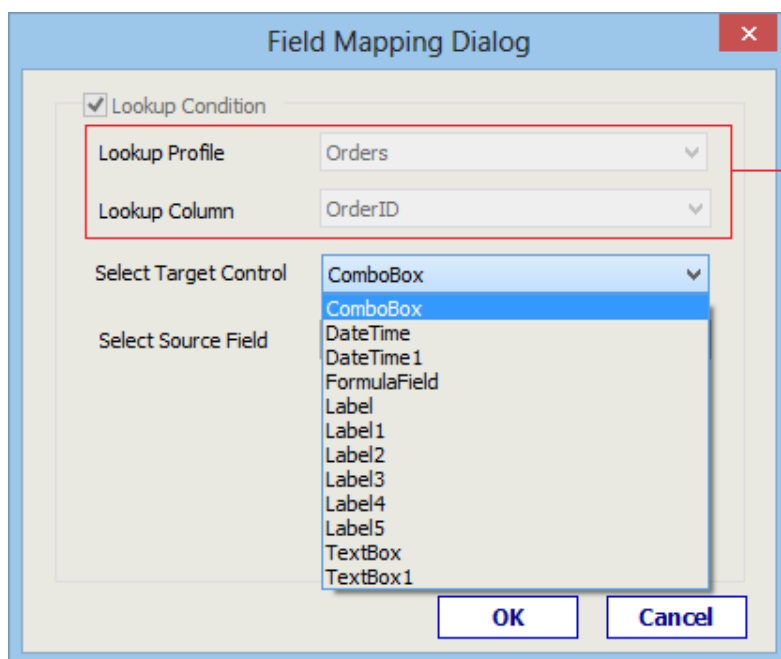


Figure 1: Lookup Mapping Property of Data Bound Controls

For adding “Field Mappings” for form controls, click “Add” button.



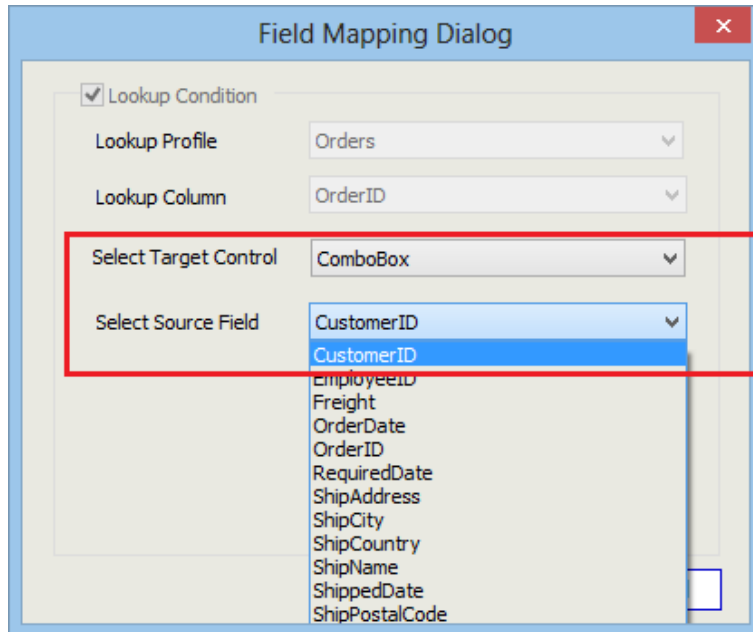
Lookup for "Order ID" value from "Order Details" Profile in "Order ID" column of "Orders" profiles.

When Match is found get values from selected columns and place them in Target controls on Form.

Figure 2: Specify Lookup Profile and Lookup Column for Lookup Mapping

Once we choose Lookup Profile and Lookup Column, Select “Target Control” on Form and Source Field from Lookup

Profile to fill data in control when match is found.

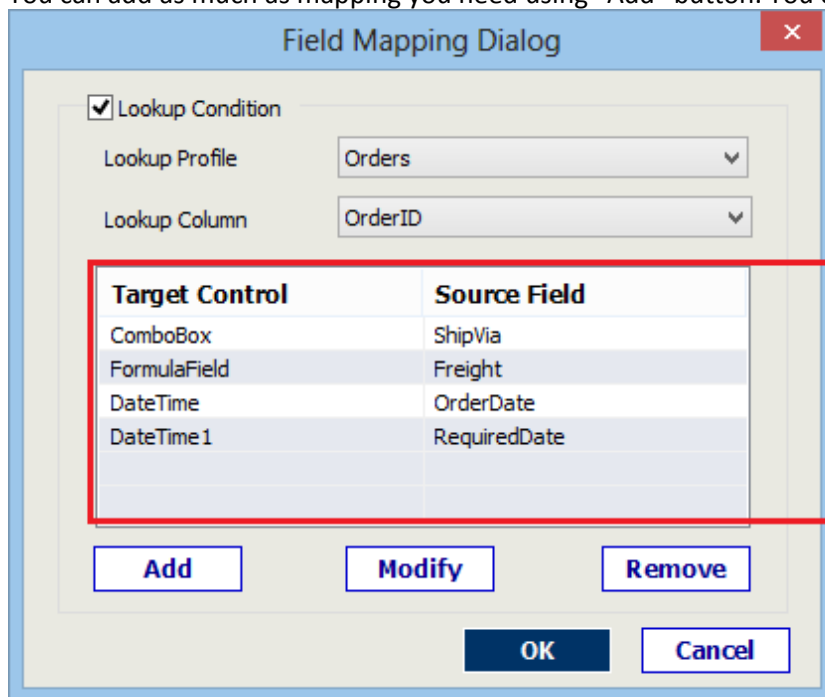


Adding Target Controls on Forms and Column in Orders profile mapping.

When Match is found get value from selected columns and place them in Target control on Form.

Figure 3: Map controls on form with required fields in Lookup Profile

You can add as much as mapping you need using "Add" button. You can Modify them or Remove them.



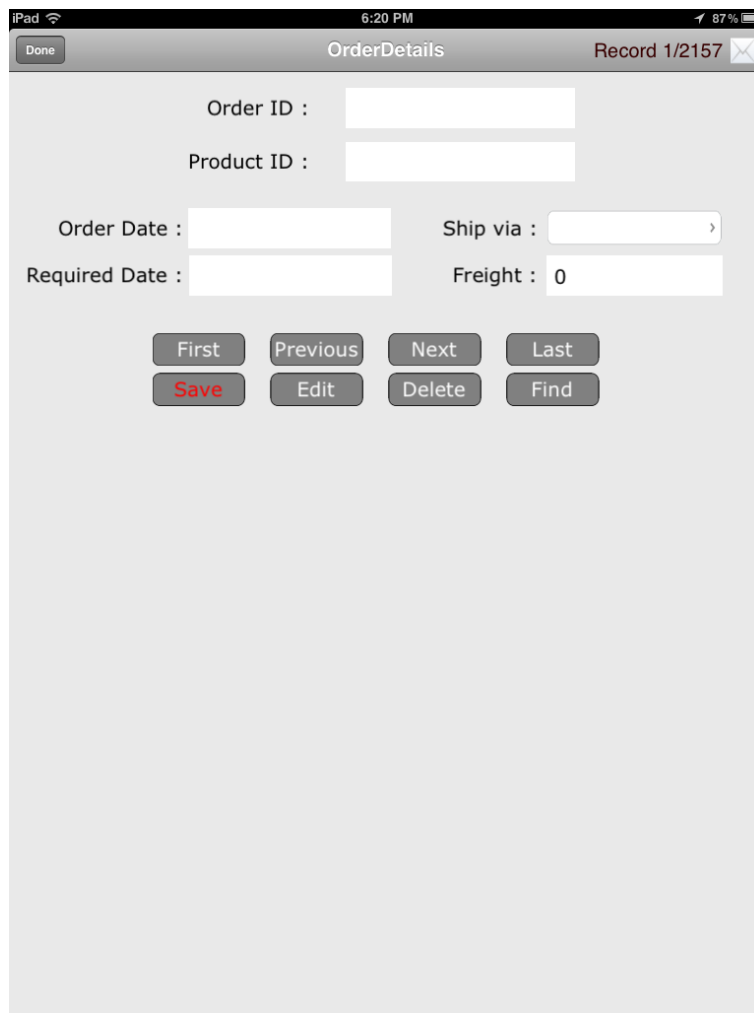
Target Control	Source Field
ComboBox	ShipVia
FormulaField	Freight
DateTime	OrderDate
DateTime1	RequiredDate

When Match is found Target controls on form will be populated with Source field value read from Orders profile.

Figure 4: Finish Field Mapping by pressing OK

In Cellica Database application on the Device:

Tap on New/Edit button.



The screenshot displays the 'OrderDetails' form on an iPad. The status bar at the top shows 'iPad', signal strength, '6:20 PM', and '87%' battery. The app title bar contains 'Done', 'OrderDetails', and 'Record 1/2157'. The form fields are: 'Order ID :', 'Product ID :', 'Order Date :', 'Ship via :', 'Required Date :', and 'Freight : 0'. Below the form are two rows of buttons: 'First', 'Previous', 'Next', 'Last' and 'Save', 'Edit', 'Delete', 'Find'.

Figure 5: Tap on New/Edit button

You will get List of OrderID's from Order table as we set Lookup Profile to "Orders" and "Lookup Column" to "OrderID" for Order ID TextBox control.

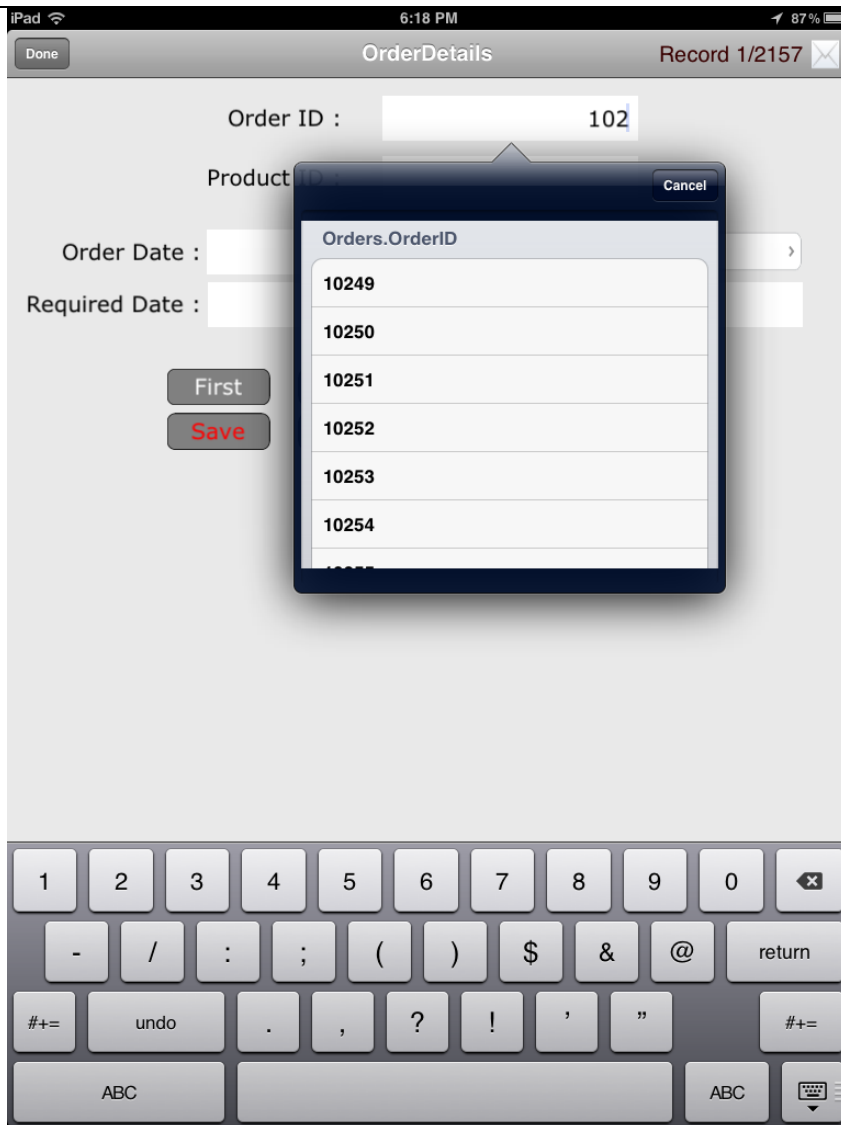
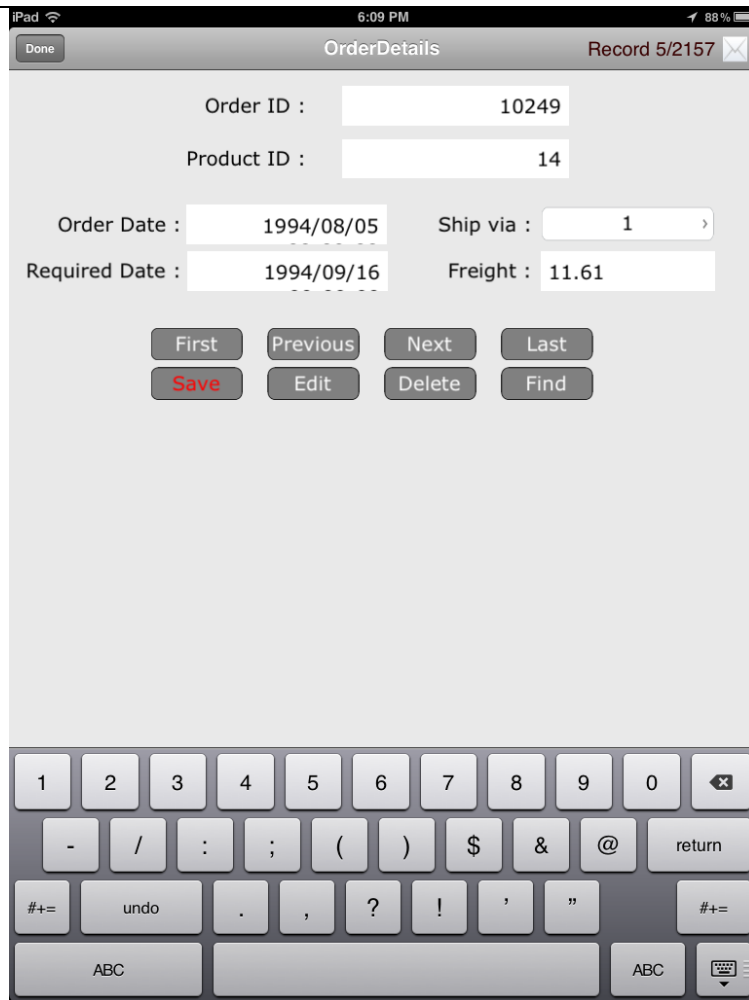


Figure 6: Enter the OrderID or Choose from the list of OrderID's in Lookup Profile

Select required "OrderID" from the list and once it is done Mapped Controls on OrderDetails form will be get populated from appropriate data from "Orders" profile.



Order ID : 10249

Product ID : 14

Order Date : 1994/08/05 Ship via : 1

Required Date : 1994/09/16 Freight : 11.61

Buttons: First, Previous, Next, Last, Save, Edit, Delete, Find

Figure 7: Mapped form controls get populated with values from Lookup profile record with matching OrderID

You can use Lookup Mapping functionality in many cases like looking up for product information from Products table on scanning Product barcode on Orders Form.