

**KB Article 2013\_EE\_771**  
**March 07, 2013**  
**Last update: July 24, 2013**

How to use FileMaker Pro to create profiles in Cellica Database application? (Personal/Enterprise Edition)

## Product(s)

Cellica Database (Wi-Fi, Internet and Anywhere) Personal Edition or Enterprise Edition

## Symptoms

Not Applicable.

## Details:

### Creating DSN for FileMaker Pro database

Cellica Database supports following FileMaker Pro Versions:

- FileMaker Pro 7
- FileMaker Pro 8
- FileMaker Pro 8.5
- FileMaker Pro 9
- FileMaker Pro 10
- FileMaker Pro 11
- FileMaker Pro 12

You need to use any **one of following 2 types of ODBC driver for FileMaker Pro** depending upon the FileMaker Pro version you are using,

#### **A) Using DataDirect SequeLink Driver (version 5.5 or higher) :** Works with versions,

- FileMaker Pro 7
- FileMaker Pro 8
- FileMaker Pro 8.5
- FileMaker Pro 9
- FileMaker Pro 10

#### **B) Using FileMaker ODBC Driver:** Works with versions,

- FileMaker Pro 11
- FileMaker Pro 12

**A) Using DataDirect Sequelink Driver (version 5.5 or higher) :** Works with versions,

- FileMaker Pro 7
- FileMaker Pro 8
- FileMaker Pro 8.5
- FileMaker Pro 9
- FileMaker Pro 10

1. Install ODBC drivers for FileMaker database.

ODBC driver installation program come with FileMaker Pro. Find ODBC driver setup at path -

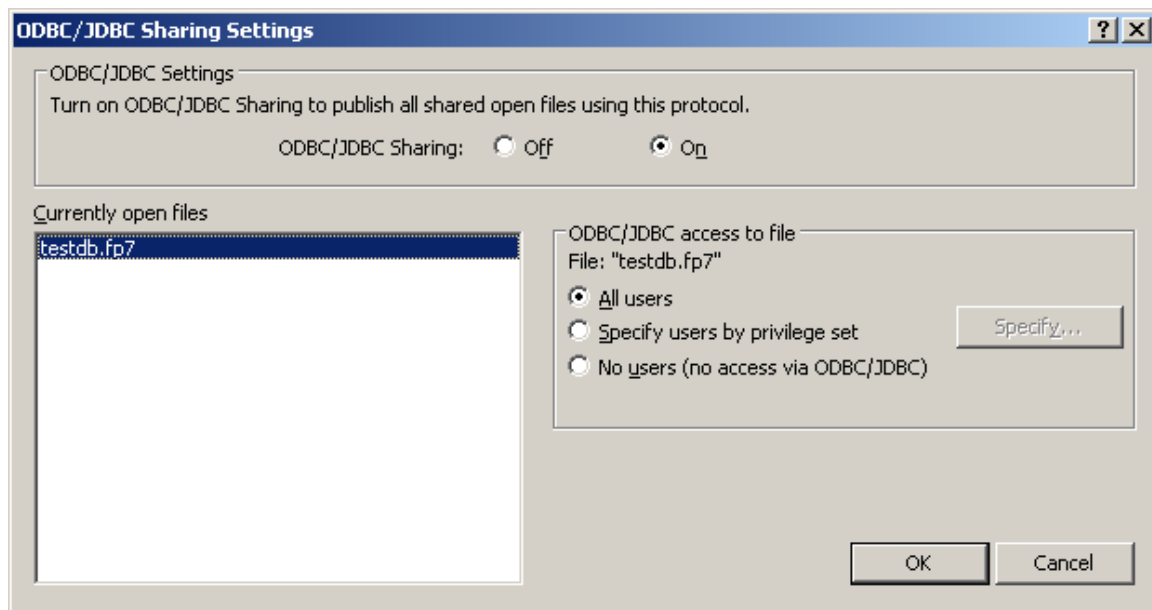
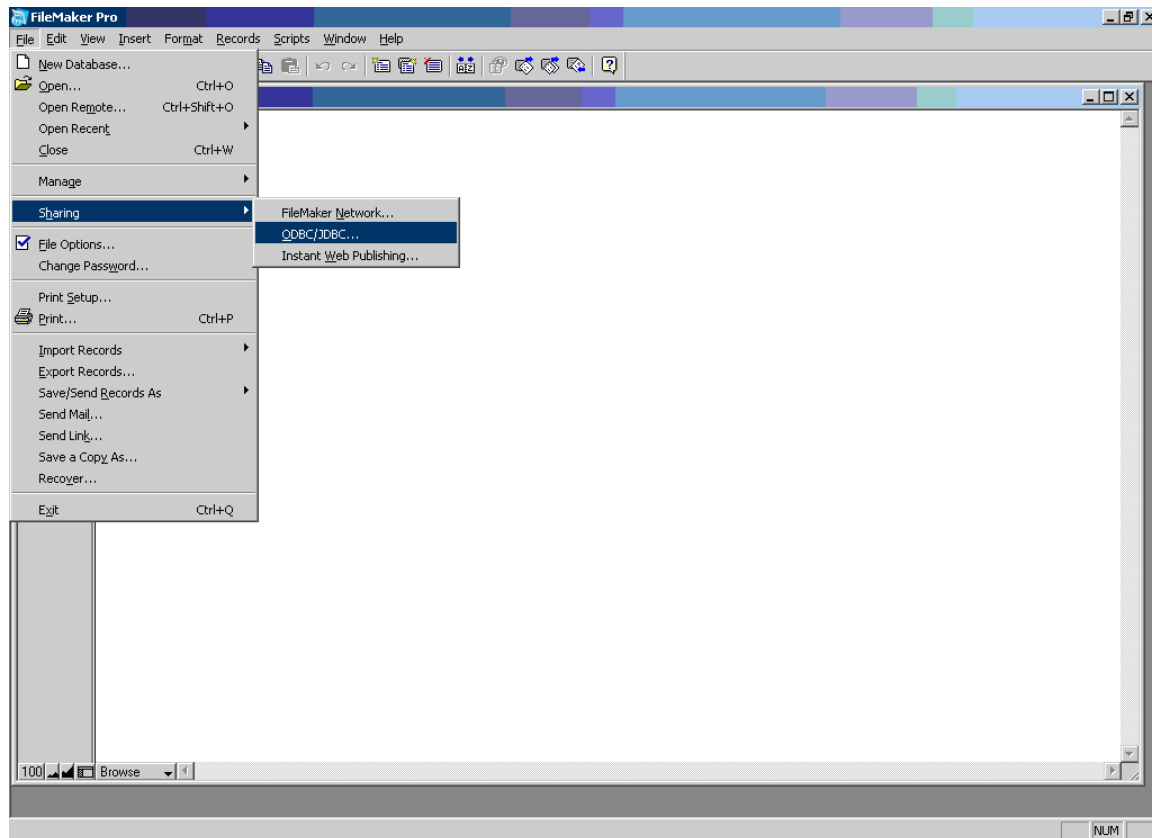
**FileMaker Pro 10.0 Installer\xDDBC\ODBC Client Driver Installer\setup.exe**

2. Start FileMaker Pro.

3. Open the FileMaker database for which you want to create DSN.

4. Turn on ODBC sharing for this database

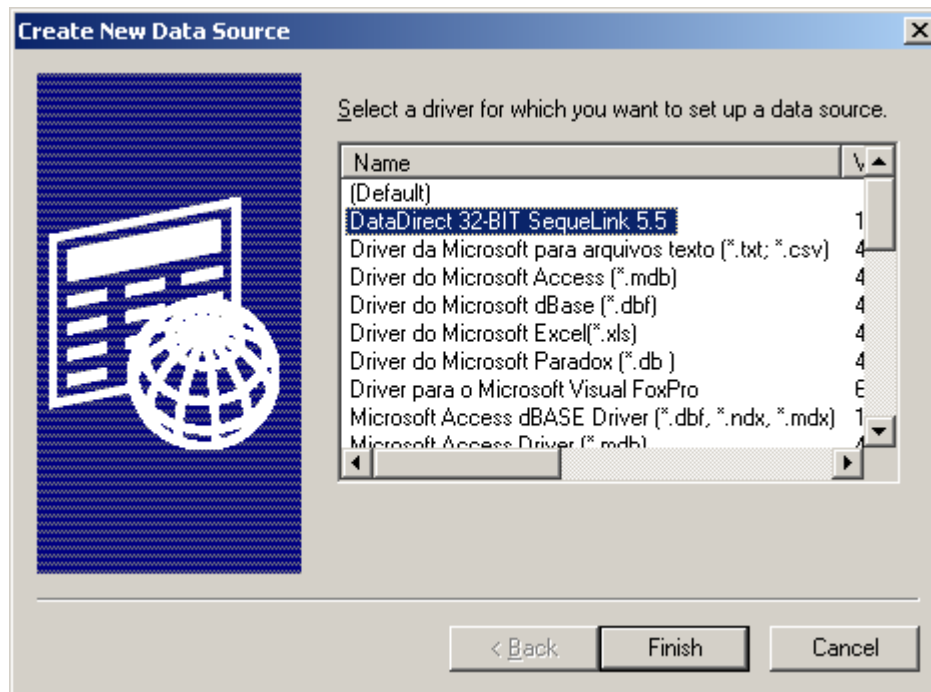
- a. Select File->Sharing->ODBC/JDBC menu.
- b. In "ODBC/JDBC setting" – select "On" radio button.
- c. In "ODBC/JDBC access to file" – select "All Users" radio button.
- d. Press Ok to finish.



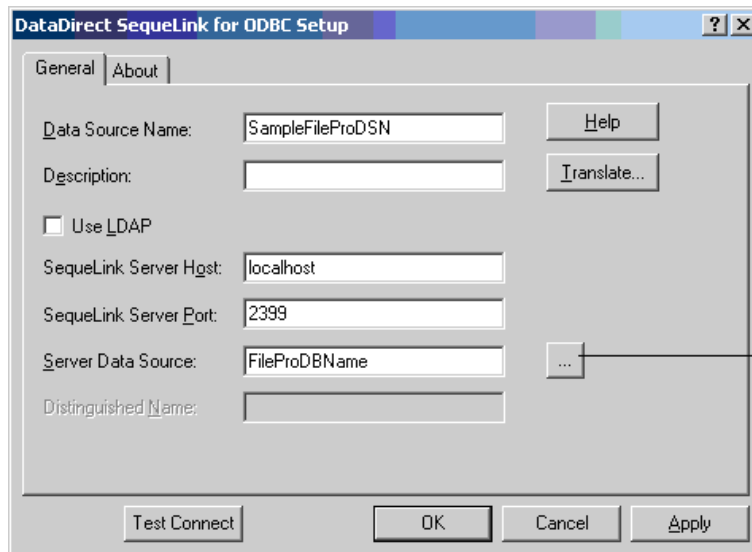
5. Create DSN using ODBC Data Source Administrator
  - a. Open "Cellica Database Application -> Profile Manager-> Add -> Config"

This will open "ODBC Data Source Administrator", Create DSN here using following steps.

- b. Select User DSN tab, if not already selected.
- c. Click "Add" button, "Create New Data Source" window appear.
- d. Select "DataDirect 32-BIT SequeLink 5.5" driver from available drivers list.



- e. Click finish button, "DataDirect SequeLink for ODBC Setup" window will appear.
- f. Enter the name for DSN in "Data Source Name" textbox.
- g. You can leave Description field empty.
- h. Enter "localhost" inside "SequeLink Server Host" textbox.
- i. Enter "2399" inside "SequeLink Server Port".
- j. Select/enter name of the database (which to be assigned to DSN) inside "Server Data Source"



Click this button to get database list. Select your database from list.

- k. Click “Test Connect” button. “Log to SequeLink Service” dialog will appear.
- l. Enter the valid user name and password of FileMaker user account.
- m. Click on “Test Connect” button, you should get “connection test was successful” message.
- n. Finish creating DSN by clicking “Ok” button.

Select the newly created DSN in Cellica Database software to transfer the database to a device.

**Note:**

While creating a profile in Cellica Database, if following error occurs,



turn on the ODBC/JDBC sharing -

- a. Select File->Sharing->ODBC/JDBC menu.
- b. In the “ODBC/JDBC setting” option → select “On” radio button.
- c. In the “ODBC/JDBC access to file” option→ select “All Users” radio button.

## B) Using FileMaker ODBC Driver:

Works with versions,

- FileMaker Pro 11
- FileMaker Pro 12

### To configure the ODBC client driver:

**1.** Open "Cellica Database Application -> Profile Manager-> Add -> Config"

This will open "ODBC Data Source Administrator", Create DSN here using following steps.

**2.** Select the System DSN.

**3.** Click the Add button.

The Create New Data Source dialog box opens.

**4.** Select FileMaker ODBC, and click Finish.

The FileMaker DSN Configuration dialog box opens.

**5.** Click the Next button.

**6.** For Name, enter a name that will be meaningful to others accessing the FileMaker data source. For Description, enter an optional description of the FileMaker data source. Click Next.

**7.** For Host:

- If you're connecting to a database file hosted by FileMaker Pro on your local machine, enter localhost or the IP address 127.0.0.1.
- If you're connecting to a database file hosted by FileMaker Server Advanced over a network, enter the IP address of the FileMaker Server.

If you have enabled sharing via ODBC/JDBC in the host application, you can select Connect to host to obtain the names of available databases. Click Next.

Otherwise, click Finish to save your data source information.

**8.** For Database, select a database from the list of available databases, or type the filename of the FileMaker database file you're using as a data source.

**Note** For database files hosted by FileMaker Server Advanced, the list of databases may be filtered based on the File Display Filter setting. See FileMaker Server Help for information.

If you need handling of specific non-English text, click Advanced Language. The Advanced Language Options dialog box opens.

- To auto-detect language settings, select the Auto-detect language settings for application option.
- To specify the language setting, clear the Auto-detect language settings for application option and select the system setting you want to use.

If you want to create a log file for long-running queries, select the Save long-running queries to a log file option, and enter the name for the log file.

Click Finish to save your data source information.

**9. Review the information about your FileMaker DSN.**

- Click Test to verify that you have correctly configured the ODBC client driver to access the FileMaker data source. If you receive an error message, you can correct the connection information. You may also need to check that the FileMaker database file is hosted and available. Also check if the host application (FileMaker Pro or FileMaker Server Advanced) has been set up for sharing via ODBC/JDBC.
- Click “Done” to save your data source information.

Select the newly created DSN in Cellica Database software to transfer the database to a device.